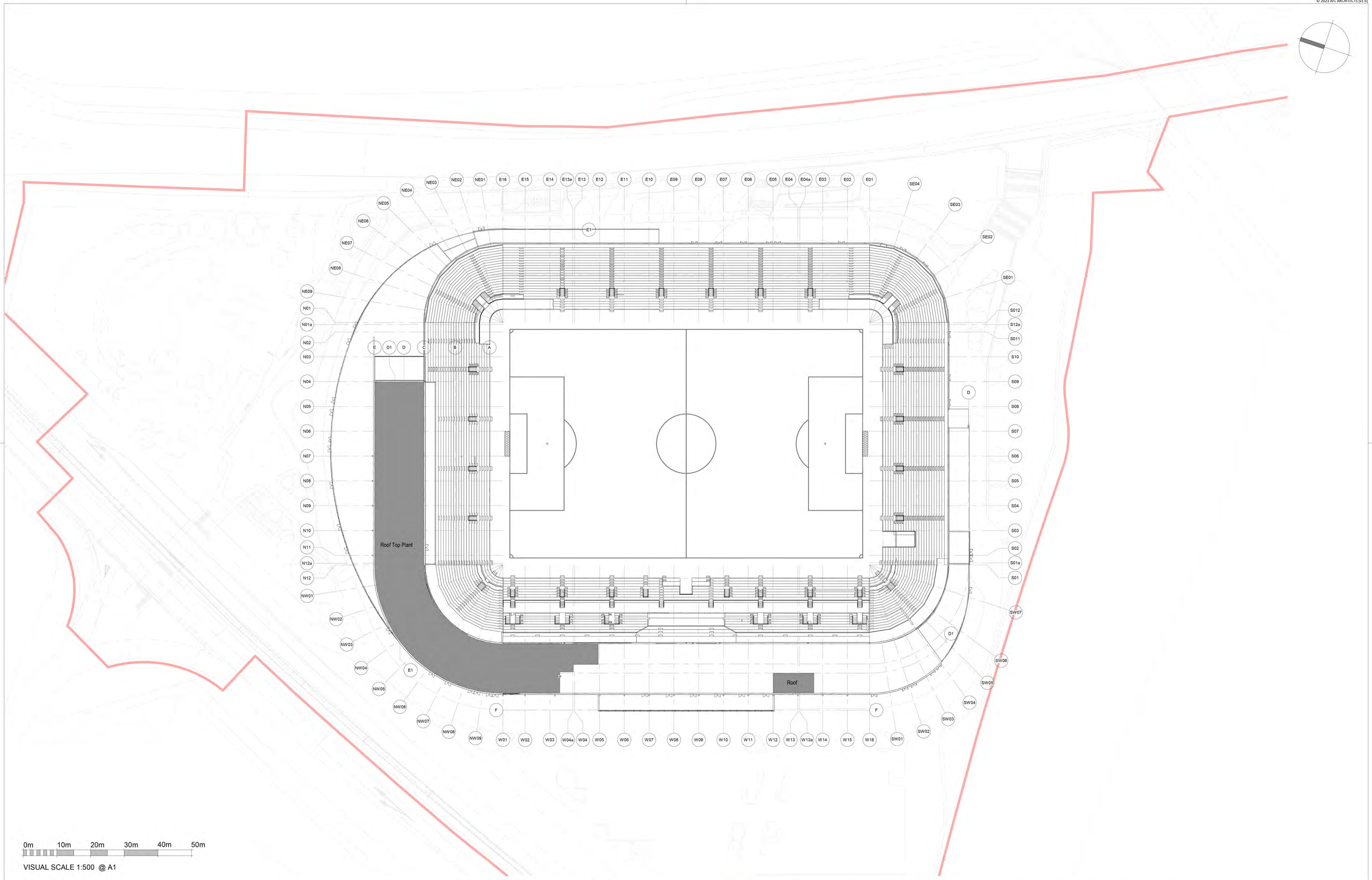
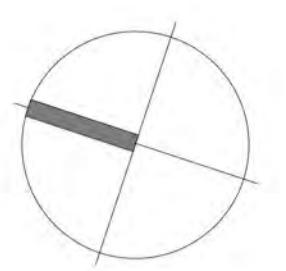


**Figure 4.4 - Roof Plan**



0m 10m 20m 30m 40m 50m  
VISUAL SCALE 1:500 @ A1

**NOTES**  
All dimensions and levels to be checked on site  
Any discrepancies are to be reported to the Architect before any work commences  
This drawing shall not be scaled to ascertain any dimensions, work to figured dimensions only  
This drawing shall not be reproduced without express written permission from AFL Architects Ltd.

**DISCLAIMER**  
When this drawing is issued in CAD, it is an uncontrolled version issued for information only, to enable the recipient to prepare their own documents/drawings for which they are solely responsible.

**SOFTWARE INTERDEPENDABILITY**  
AFL prepared this drawing using Autodesk REVIT Architecture.

AFL does not accept liability for any loss or degradation of any information held in the drawing resulting from the translation from the original file format to any other file format or from the recipient's reading of it in any other programme.

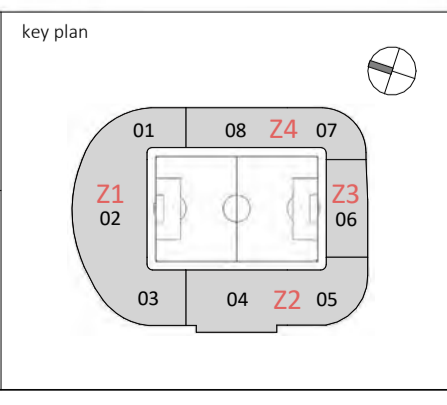
rev no.	rev date	rev by	description
P11	16/02/24	DC	Planning Issue.

client  
**Oxford United Football Club**



AFL Architects  
1st Floor, St Georges House  
56 Peter Street, Manchester UK  
M2 3NQ

t: +44(0)161 236 6263  
f: +44(0)161 236 6484  
w: www.afl-architects.com  
e: mail@afl-uk.com  
twitter.com/AFLArchitects

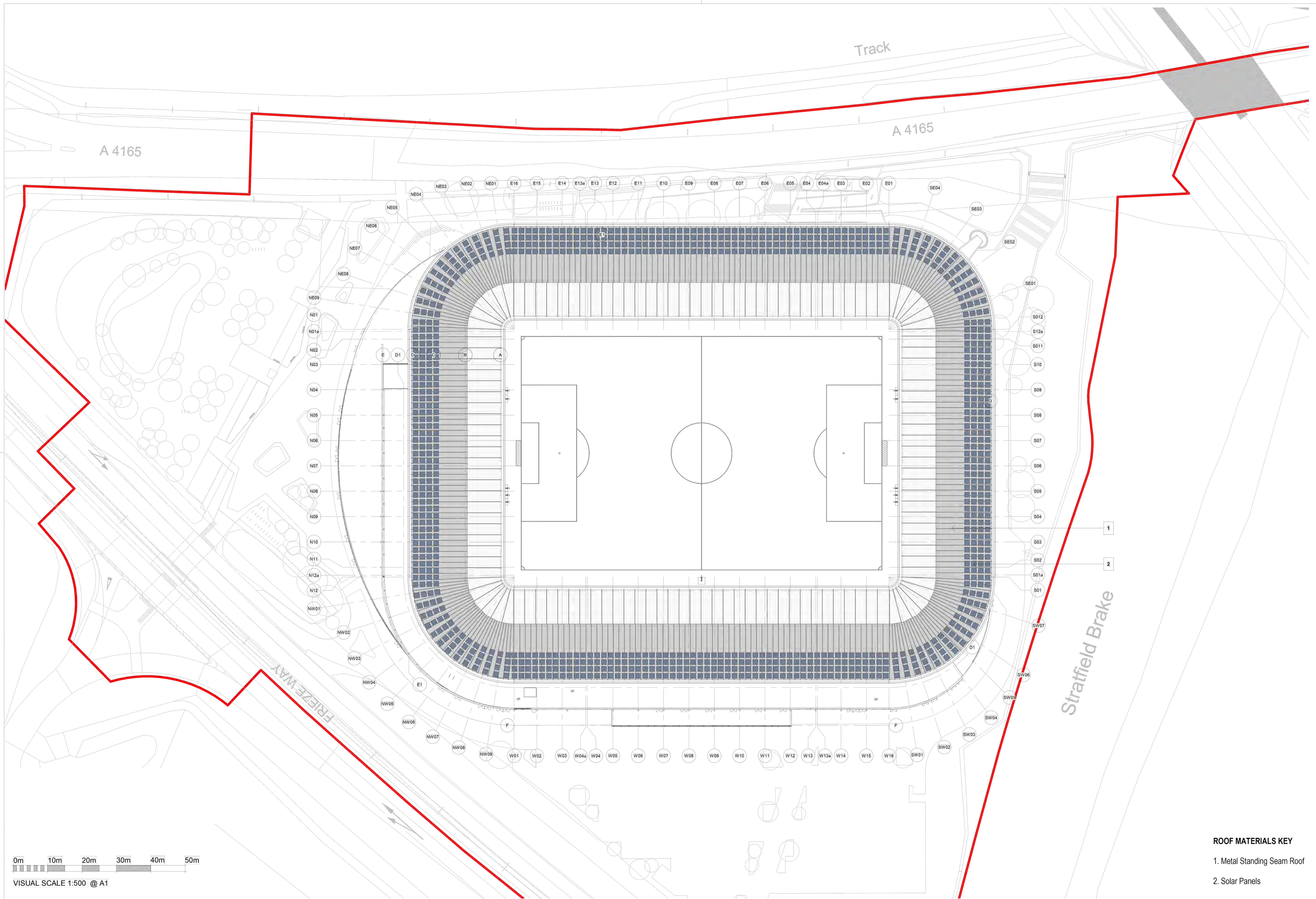
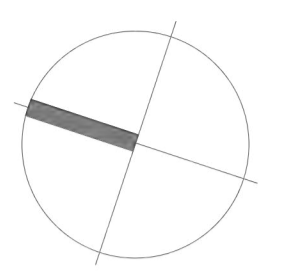



project  
**Oxford United Football Club**

location  
**Oxford**

drawing title  
**Level 05 - Hotel Roof Plan**

AFL job number 221524	scale @ A1	drawn JN	checked DC
dwg purpose <b>PLANNING</b>	rev date 16/02/24	status <b>S2</b>	rev <b>P11</b>
bim project origin zone level type role 6-digit no. <b>OUFC-AFL-00-05-DR-A-201050</b>			



0m 10m 20m 30m 40m 50m  
VISUAL SCALE 1:500 @ A1

**ROOF MATERIALS KEY**  
1. Metal Standing Seam Roof  
2. Solar Panels

**NOTES**  
All dimensions and levels to be checked on site  
Any discrepancies are to be reported to the Architect before any work commences  
This drawing shall not be scaled to ascertain any dimensions, work to figured dimensions only  
This drawing shall not be reproduced without express written permission from AFL Architects Ltd.

**DISCLAIMER**  
When this drawing is issued in CAD, it is an uncontrolled version issued for information only, to enable the recipient to prepare their own documents/drawings for which they are solely responsible.

**SOFTWARE INTERDEPENDABILITY**  
AFL prepared this drawing using Autodesk REVIT Architecture.

AFL does not accept liability for any loss or degradation of any information held in the drawing resulting from the translation from the original file format to any other file format or from the recipient's reading of it in any other programme.

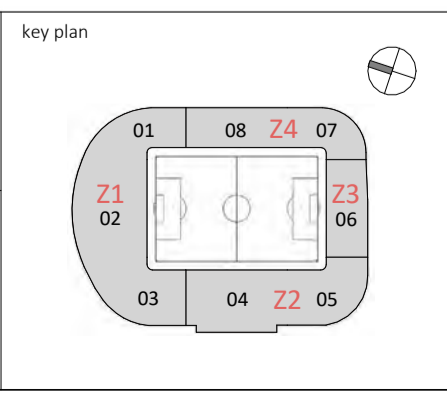
REV. NO.	REV. DATE	REV. BY	DESCRIPTION
P11	16/02/24	DC	Planning Issue.

client  
**Oxford United Football Club**



AFL Architects  
1st Floor, St Georges House  
56 Peter Street, Manchester UK  
M2 3NQ

t: +44(0)161 236 6263  
f: +44(0)161 236 6484  
w: www.afl-architects.com  
e: mail@afl-uk.com  
twitter.com/AFLArchitects



project  
**Oxford United Football Club**

location  
**Oxford**

drawing title  
**Level 06 - Roof Plan**

AFL job number	scale @ A1	drawn	checked
221524		JN	DC
		rev date	16/02/24
dwg purpose	status	rev	
<b>PLANNING</b>	<b>S2</b>	<b>P11</b>	
bim project origin zone level type role 6-digit no.			
<b>OUFC-AFL-00-06-DR-A-201060</b>			