

- ROOF MATERIALS KEY**
- 1. Metal Standing Seam Roof
 - 2. Solar Panels

NOTES
 All dimensions and levels to be checked on site
 Any discrepancies are to be reported to the Architect before any work commences
 This drawing shall not be scaled to ascertain any dimensions, work to figured dimensions only
 This drawing shall not be reproduced without express written permission from AFL Architects Ltd.

DISCLAIMER
 When this drawing is issued in CAD, it is an uncontrolled version issued for information only, to enable the recipient to prepare their own documents/drawings for which they are solely responsible.

SOFTWARE INTEROPERABILITY
 AFL prepared this drawing using Autodesk REVIT Architecture.

AFL does not accept liability for any loss or degradation of any information held in the drawing resulting from the translation from the original file format to any other file format or from the recipient's reading of it in any other programme.

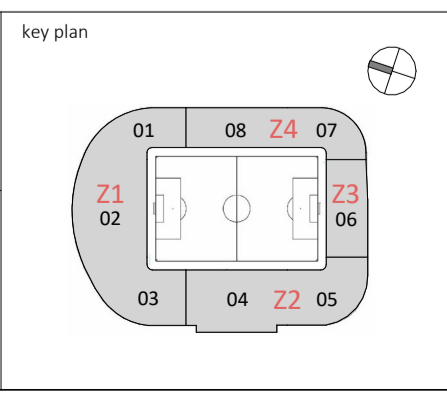
P11	16/02/24	DC	Planning Issue.
rev no.	rev date	rev by	description

client
Oxford United Football Club



AFL Architects
 1st Floor, St Georges House
 56 Peter Street, Manchester UK
 M2 3NQ

t: +44(0)161 236 6263
 f: +44(0)161 236 6484
 w: www.afl-architects.com
 e: mail@afl-uk.com
 twitter.com/AFLArchitects

project
Oxford United Football Club

location
Oxford

drawing title
Level 06 - Roof Plan

AFL job number 221524	scale @ A1	drawn JN	checked DC
dwg purpose PLANNING	rev date 16/02/24	status S2	rev P11
bim project origin zone level type role 6-digit no. OUFC-AFL-00-06-DR-A-201060			