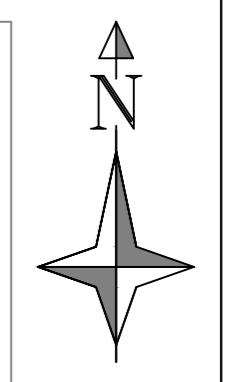


Level Datum:	OS (D.P.3 verified)			
Grid Conversion:	OS (D.P.3 verified)			
Station Information:				
Station	Easting (m)	Northing (m)	Level (m)	Description
B1	40088.000	22060.700	86.801	Nil
B2	40089.000	22060.300	86.184	Nil
B3	40090.000	22059.900	86.567	Nil
B4	40091.000	22059.500	86.950	Nil
B5	40092.000	22059.100	87.333	Nil
B6	40093.000	22058.700	87.716	Nil
B7	40094.000	22058.300	88.100	Nil
B8	40095.000	22057.900	88.483	Nil
B9	40096.000	22057.500	88.866	Nil
B10	40097.000	22057.100	89.250	Nil
B11	40098.000	22056.700	89.633	Nil
B12	40099.000	22056.300	90.016	Nil
B13	40100.000	22055.900	90.400	Nil
B14	40101.000	22055.500	90.783	Nil
B15	40102.000	22055.100	91.166	Nil
B16	40103.000	22054.700	91.550	Nil
B17	40104.000	22054.300	91.933	Wooden Peg
B18	40105.000	22053.900	92.316	Wooden Peg



- ### SURVEY NOTES
- THIS PLAN SHOULD BE USED FOR ITS ORIGINAL PURPOSE ONLY. M.E.C. ACCEPTS NO RESPONSIBILITY FOR ITS DRAWINGS IF THEY ARE SUPPLIED TO ANY OTHER PARTY OTHER THAN THE ORIGINAL CLIENT.
 - THE INFORMATION SHOWN HAS BEEN SURVEYED IN ACCORDANCE TO THE REQUIREMENTS AND ACCURACY BANDS SET OUT WITHIN THE ORIGINAL SCOPE INTENDED. PLEASE CHECK WITH M.E.C. F. UNLESS.
 - BOUNDARIES SHOWN ARE PHYSICAL. SITE FEATURES AND MAY NOT REPRESENT LEGALLY CONVEYED OWNERSHIP.
 - ALL FEATURES SHOWN WERE CURRENT AT THE TIME OF SURVEY. SOME FEATURES MAY HAVE BEEN MISSED OR OMITTED DUE TO ACCESS, PARKED VEHICLES, TEMPORARY STRUCTURES OR DENSE VEGETATION OR DUE TO THE SCOPE OF THE PROJECT. PLEASE CHECK WITH M.E.C. IF CLARIFICATION IS REQUIRED.
 - ALL GLOBAL NAVIGATION AND SATELLITE SYSTEM (GNSS) DETAIL AND REFERENCE STATIONS HAVE BEEN CAPTURED AND TRANSFORMED ONTO ORDNANCE SURVEY NATIONAL GRID AND DATUM OSGB36 USING THE O.S. ACTIVE NETWORK (OS NET) TRANSFORMATION AND GEOID MODEL OSGB15 A OSGB15.
 - NO SCALE FACTOR HAS BEEN APPLIED TO THE SURVEY CONTROL STATIONS AND RELATED DETAIL. THEREFORE ALL THE APPLICABLE COORDINATES SHOWN ARE NOT ON TRUE OSGB36(S) AND HAVE BEEN GEOREFERENCED USING A PSEUDO-GEOCENTRIC COORDINATE THAT HAS BEEN ESTABLISHED IN A CENTRALISED LOCATION TO THE CAPTURED GNSS REFERENCE STATIONS WITHIN THE SITE, AND ROTATED ON A BEARING USING A GNSS REFERENCE STATION AT SURVEY CONTROL STATION 072.
 - THE LEVELS SHOWN ARE RELATIVE TO THE OSGB REFERENCE STATION LEVELS CAPTURED AND THE DIFFERENCE AVERAGED BETWEEN THEM.
 - ALL LEVELS ARE REPRESENTATIVE TO METRES ABOVE ORDNANCE DATUM.
 - PLEASE NOTE THAT THE 3D TOPOGRAPHICAL SURVEY CAN BE ACCESSED BY TURNING ON 3D LAYERS VIA THE LAYER FILTER IN THE LAYER MANAGER.
 - ALL UNITS ARE IN METRES UNLESS OTHERWISE SPECIFIED.
 - SURVEY SHOWN UNDERTAKEN BY M.E.C. IN AUGUST 2023 WITH THE ADDITIONAL DATA CAPTURED IN SEPTEMBER 2023.
 - NOT ALL LEGEND DETAIL MAY BE APPLICABLE IN THIS DRAWING. IF ANY CLARIFICATION IS REQUIRED PLEASE INFORM M.E.C.
 - ANY MEASUREMENTS TAKEN OFF THE INFORMATION PROVIDED SHOULD BE CHECKED ON SITE BEFORE BEING ACTIONED OR DISTRIBUTED TO THIRD PARTIES IF NOT THE ORIGINAL CLIENT.

TOPOGRAPHICAL LEGEND

	BUILDING		FLOODLIGHT
	BENCH		FLAGPOLE
	CHANNEL		GAS
	CENTER LINE		GAS PIPE INLET
	LINE MARKING		JUNCTION BOX
	CHANGE IN SURFACE		LITTER BIN
	TOP OF KERB		LETTER BOX
	EDGE OF TREES		LAMP POST
	EDGE OF VEGETATION		MARKER POST
	FENCE		MANHOLE COVER
	GATE		MARKER METER
	OVERHEAD LINES		MISC
	RIVER EMBANKMENT		MISC
	STEPS		SIGN
	TOP OF BANK		SIGN POST
	TRACK		SIGN POST
	TOP OF WALL		SIGN POST
	VERGE		SIGN POST
	WALL		SIGN POST
	WATER LINE		SIGN POST
	PIPELINE		SIGN POST

ABBREVIATIONS

BOLL	BOLLARD	CHAMBER	CHAMBER
INVT LVL	INVERT LEVEL	CHAMBER	CHAMBER
WATER LVL	WATER LEVEL	CHAMBER	CHAMBER
FENCE LVL	FENCE LEVEL	CHAMBER	CHAMBER
FLOOR LVL	FLOOR LEVEL	CHAMBER	CHAMBER
THRESHOLD LVL	THRESHOLD LEVEL	CHAMBER	CHAMBER
WALL LVL	WALL LEVEL	CHAMBER	CHAMBER
AVG TOP OF VEG	AVERAGE TOP OF VEGETATION	CHAMBER	CHAMBER
AVG TOP OF TREES	AVERAGE TOP OF TREES	CHAMBER	CHAMBER
TOP OF TREE LEVEL	TOP OF TREE LEVEL	CHAMBER	CHAMBER
LEVEL LVL	LEVEL LEVEL	CHAMBER	CHAMBER
RIDGE LVL	RIDGE LEVEL	CHAMBER	CHAMBER
RETAINING WALL	RETAINING WALL	CHAMBER	CHAMBER
ARMO BARRIER	ARMOUR BARRIER	CHAMBER	CHAMBER
BARBED WIRE	BARBED WIRE	CHAMBER	CHAMBER
COMBINED IRON	COMBINED IRON	CHAMBER	CHAMBER
CHAIN LINK	CHAIN LINK	CHAMBER	CHAMBER
CHESTNUT PALING	CHESTNUT PALING	CHAMBER	CHAMBER
CONCRETE PANEL	CONCRETE PANEL	CHAMBER	CHAMBER
IRON RAILING	IRON RAILING	CHAMBER	CHAMBER
INTERWOVEN	INTERWOVEN	CHAMBER	CHAMBER
METAL FENCE	METAL FENCE	CHAMBER	CHAMBER
POST & CHAIN	POST AND CHAIN	CHAMBER	CHAMBER
POST & IRON RAIL	POST AND IRON RAIL	CHAMBER	CHAMBER
POST AND RAIL	POST AND RAIL	CHAMBER	CHAMBER
POST & WIRE	POST AND WIRE	CHAMBER	CHAMBER
STEEL PALISADE	STEEL PALISADE	CHAMBER	CHAMBER
WIRE MESH FENCE	WIRE MESH FENCE	CHAMBER	CHAMBER
WOOD PANEL FENCE	WOOD PANEL FENCE	CHAMBER	CHAMBER
AR WALK	AR WALK	CHAMBER	CHAMBER
BOLLARD	BOLLARD	CHAMBER	CHAMBER
BUS STOP	BUS STOP	CHAMBER	CHAMBER
CABLE MARKER	CABLE MARKER	CHAMBER	CHAMBER
CLOSED CIRCUIT CAMERA	CLOSED CIRCUIT CAMERA	CHAMBER	CHAMBER
CONTROL BOX	CONTROL BOX	CHAMBER	CHAMBER
CABLE TELEVISION	CABLE TELEVISION	CHAMBER	CHAMBER
ELECTRIC	ELECTRIC	CHAMBER	CHAMBER
EARTH ROD	EARTH ROD	CHAMBER	CHAMBER
FIRE HYDRANT	FIRE HYDRANT	CHAMBER	CHAMBER

SYMBOLS

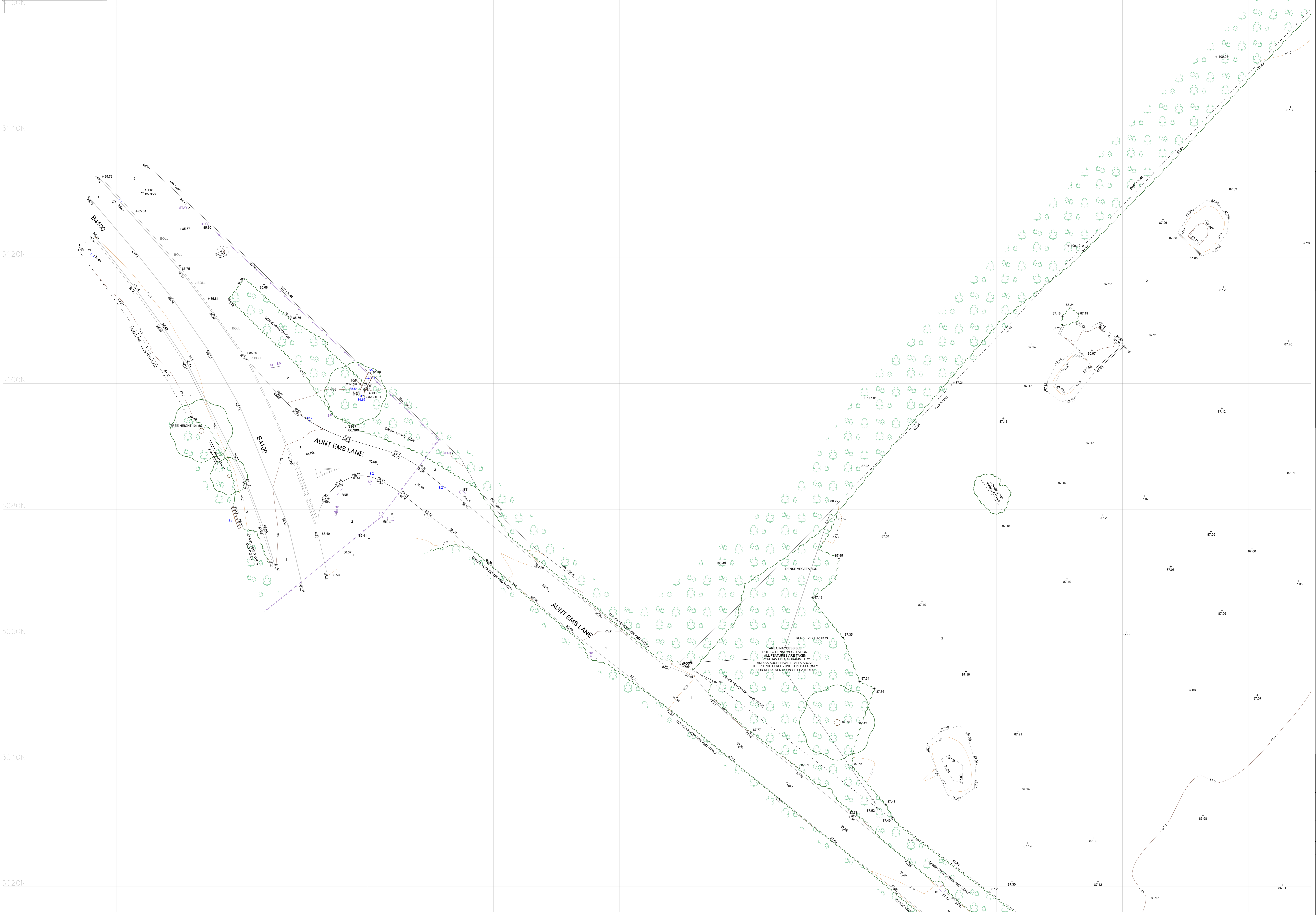
	CHAMBER		GATE
	TREE SAPLING		BOREHOLE
	TRIAL PIT		STAKEOUT

ABBREVIATIONS

BOLL	BOLLARD	CHAMBER	CHAMBER
INVT LVL	INVERT LEVEL	CHAMBER	CHAMBER
WATER LVL	WATER LEVEL	CHAMBER	CHAMBER
FENCE LVL	FENCE LEVEL	CHAMBER	CHAMBER
FLOOR LVL	FLOOR LEVEL	CHAMBER	CHAMBER
THRESHOLD LVL	THRESHOLD LEVEL	CHAMBER	CHAMBER
WALL LVL	WALL LEVEL	CHAMBER	CHAMBER
AVG TOP OF VEG	AVERAGE TOP OF VEGETATION	CHAMBER	CHAMBER
AVG TOP OF TREES	AVERAGE TOP OF TREES	CHAMBER	CHAMBER
TOP OF TREE LEVEL	TOP OF TREE LEVEL	CHAMBER	CHAMBER
LEVEL LVL	LEVEL LEVEL	CHAMBER	CHAMBER
RIDGE LVL	RIDGE LEVEL	CHAMBER	CHAMBER
RETAINING WALL	RETAINING WALL	CHAMBER	CHAMBER
ARMO BARRIER	ARMOUR BARRIER	CHAMBER	CHAMBER
BARBED WIRE	BARBED WIRE	CHAMBER	CHAMBER
COMBINED IRON	COMBINED IRON	CHAMBER	CHAMBER
CHAIN LINK	CHAIN LINK	CHAMBER	CHAMBER
CHESTNUT PALING	CHESTNUT PALING	CHAMBER	CHAMBER
CONCRETE PANEL	CONCRETE PANEL	CHAMBER	CHAMBER
IRON RAILING	IRON RAILING	CHAMBER	CHAMBER
INTERWOVEN	INTERWOVEN	CHAMBER	CHAMBER
METAL FENCE	METAL FENCE	CHAMBER	CHAMBER
POST & CHAIN	POST AND CHAIN	CHAMBER	CHAMBER
POST & IRON RAIL	POST AND IRON RAIL	CHAMBER	CHAMBER
POST AND RAIL	POST AND RAIL	CHAMBER	CHAMBER
POST & WIRE	POST AND WIRE	CHAMBER	CHAMBER
STEEL PALISADE	STEEL PALISADE	CHAMBER	CHAMBER
WIRE MESH FENCE	WIRE MESH FENCE	CHAMBER	CHAMBER
WOOD PANEL FENCE	WOOD PANEL FENCE	CHAMBER	CHAMBER
AR WALK	AR WALK	CHAMBER	CHAMBER
BOLLARD	BOLLARD	CHAMBER	CHAMBER
BUS STOP	BUS STOP	CHAMBER	CHAMBER
CABLE MARKER	CABLE MARKER	CHAMBER	CHAMBER
CLOSED CIRCUIT CAMERA	CLOSED CIRCUIT CAMERA	CHAMBER	CHAMBER
CONTROL BOX	CONTROL BOX	CHAMBER	CHAMBER
CABLE TELEVISION	CABLE TELEVISION	CHAMBER	CHAMBER
ELECTRIC	ELECTRIC	CHAMBER	CHAMBER
EARTH ROD	EARTH ROD	CHAMBER	CHAMBER
FIRE HYDRANT	FIRE HYDRANT	CHAMBER	CHAMBER

SURFACE KEY

1	ASPHALT	2	GRASS
3	CONCRETE	4	UNMADE GROUND
5	MADE GROUND	6	VEGETATED GROUND
7	BLOCK PAVING	8	CONCRETE SLABS
9	FACTORY FLOORING	10	TARMAK



REV	AMENDMENTS:	ISS	JO	AB	02/10/24
PROJECT:	AUNT EMS LANE CAVERSFIELD				
DRAWING TITLE:	TOPOGRAPHICAL SURVEY SHEET 6 OF 9				
CLIENT:	RICHBOROUGH ESTATES LTD				
DRAWING NUMBER:	27877_06_170_01.6				
REVISION:	SHEET SIZE:	SCALE:		1:200	
STATUS:	FOR INFORMATION				
M.E.C. GEOMATICS		Telephone: 01235 394 733 Email: g.m@me-c.co.uk Website: www.me-c.co.uk		ORDNANCE SURVEY © CROWN COPYRIGHT 2015. ALL RIGHTS RESERVED. LICENSE NUMBER 10005666.	