

- Site boundary
- Existing Trees and Tree Groups to be Retained
Refer to the Arboricultural Report
- Existing Hedgerows to be Retained
Refer to the Arboricultural Report
- Proposed Tree Planting
- Proposed Hedgerow Planting
- Proposed Turf
Product: Medation Turf or similar
Supplier: Ribston
- Proposed Flowering Lawn Mixture
Product: E20 Flowering Lawn Mixture
Supplier: Emerald Seeds
Sowing rate: 4g/m²
- Proposed Species-Rich Meadow Grass
Product: E24 Species-Rich Meadow Grass
Supplier: Emerald Seeds
Sowing rate: 4g/m²
- Proposed Tussock Grass Mixture
Product: E20 Tussock Grass Mixture
Supplier: Emerald Seeds
Sowing rate: 4g/m²
- Proposed Hedgerow Grass Mixture
Product: E21 Hedgerow Mixture
Supplier: Emerald Seeds
- Proposed Ornamental Planting
- Proposed Bulb Planting
- Proposed Native Sward Planting
- Proposed Native Feathered Tree and Shrub Mix
- Proposed Wetland Meadow Grass to Alteration Basin
Product: E26 Meadow Grass Mixture for Wet Soils
Supplier: Emerald Seeds
Sowing rate: 4g/m²
- Proposed Diverted Watercourse
Refer to Engineers drawings for details
- Extent of Structural Spill/ Underground Crate System
To ensure required rooting volumes for the planting
- Proposed Footpath
Proposed gravel footpath with timber edging, no-tie construction
- Proposed Boundary Fencing
Refer to Architects drawings for details
- Proposed Trim Trail
Indicate locations of trim trail/ outdoor fitness equipment along proposed trim trail route
- Proposed Earth Mounding
Refer to 3.1 site slope
- Proposed Root Barriers
Product: Root Barrier (to be confirmed by Engineer)
Supplier: GreenBlue Urban or similar approved
- Ecological Buffer Zone
5m buffer from Wentlebury Brook



A risk assessment has been carried out on this design. Residual risks following this process are listed below. A copy of the full Design Risk Register is also available on request from EDP.

1. Soft landscaping implementation within a construction environment (across the site).
2. Installing trees (across the site).
3. Water bodies deterioration ponds and swales.
4. Working within close proximity of underground services.
5. Planting on slopes and
6. Working within close proximity of highways.

For further guidance, refer to HSE Construction Design and Management Regulations 2015.

purpose of issue **PLANNING**

Rev	Description	Date	By
1	Issued	18-10-2022	LCH
2	Amended	06-07-2022	LCH
3		01-07-2022	LCH

client
TriTux Symmetry Ltd and Siemens Healthineers

project title
Symmetry Park, Oxford North

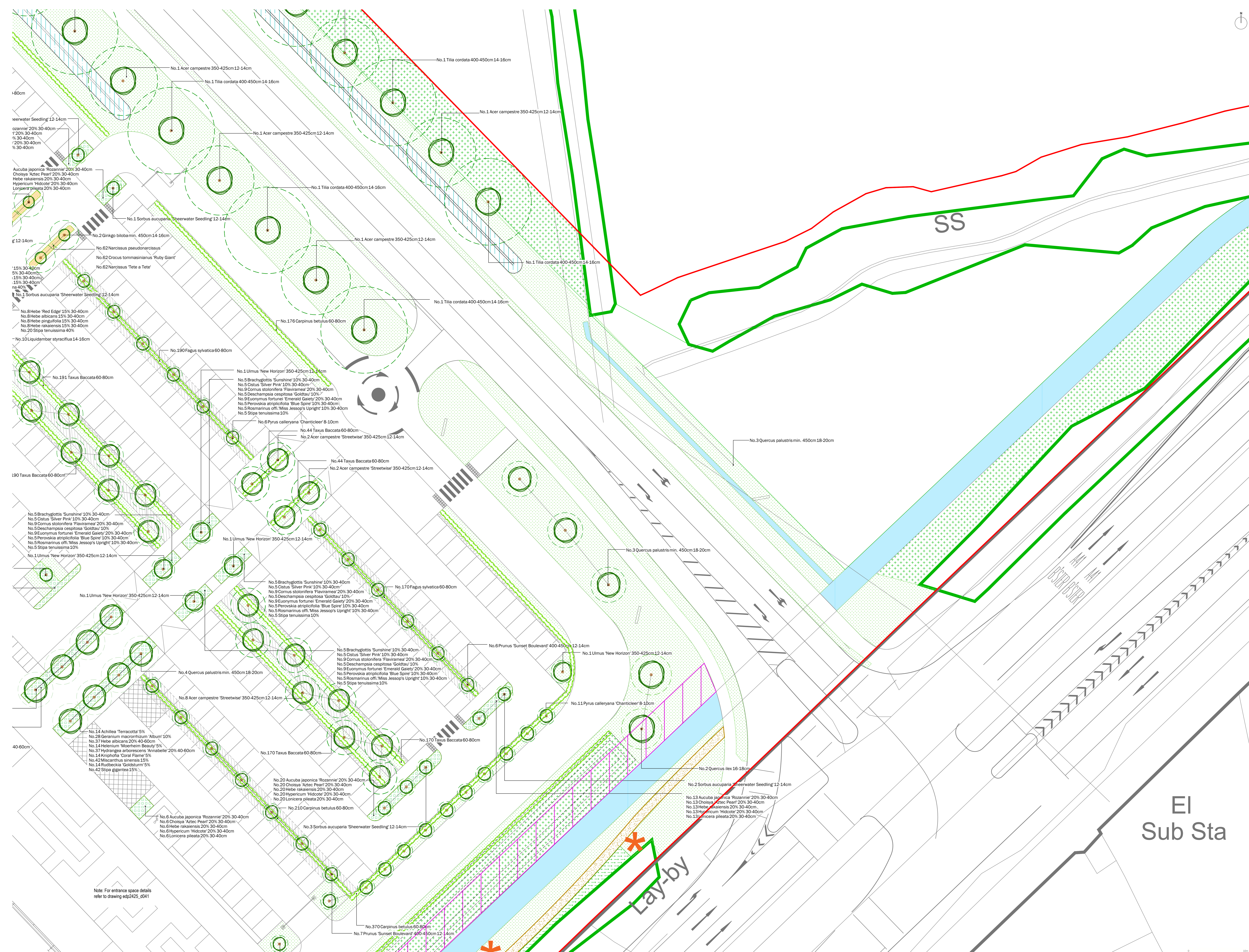
drawing title
Detailed Landscape Proposals

date
18 OCTOBER 2022

drawing number
edp2425_06171

scale
1:200 @ A0

Sheet 6 of 17
drawn by LTH
checked BC
QA RB

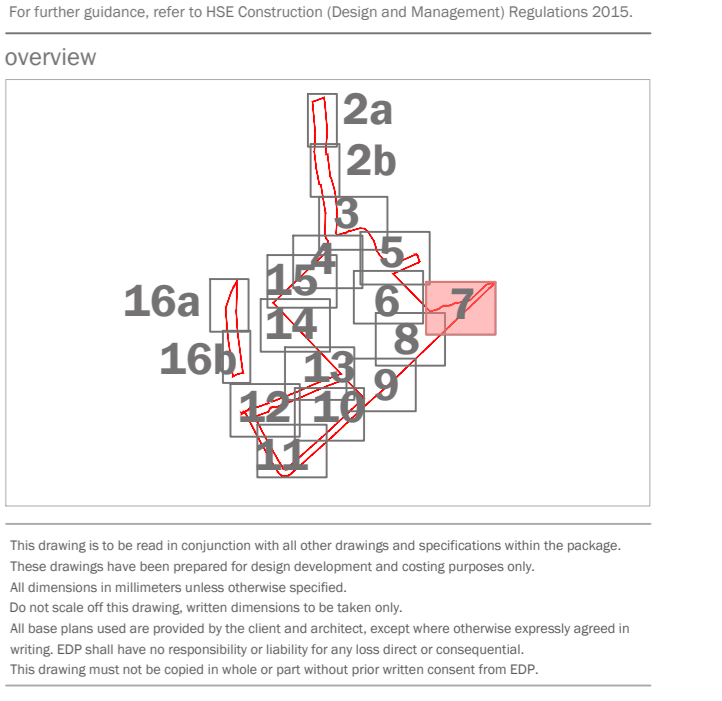


- Site boundary
- Existing Trees and Tree Groups to be Retained
- Existing Hedgerows to be Retained
- Proposed Tree Planting
- Proposed Hedgerow Planting
- Proposed Turf
- Proposed Flowering Lawn Mixture
- Proposed Species-Rich Meadow Grass
- Proposed Tussock Grass Mixture
- Proposed Hedgerow Grass Mixture
- Proposed Ornamental Planting
- Proposed Bulb Planting
- Proposed Native Swathe Planting
- Proposed Native Feathered Tree and Shrub Mix
- Proposed Wetland Meadow Grass to Attenuation Basin
- Proposed Diverted Watercourse
- Extent of Structural Soil/ Underground Crate System
- Proposed Footpath
- Proposed Boundary Fencing
- Proposed Trim Trail
- Proposed Earth Mounding
- Proposed Root Barriers
- Ecological Buffer Zone

- Product: ELS Flowering Lawn Mixture
- Supplier: Emery Seeds
- Sowing rate: 4g/m²
- Product: ELS Basic General Purpose Meadow Mixture
- Supplier: Emery Seeds
- Sowing rate: 4g/m²
- Product: ELS2 Tussock Grass Mixture
- Supplier: Emery Seeds
- Sowing rate: 5g/m²
- Product: ELS3 Hedgerow Mixture
- Supplier: Emery Seeds
- Sowing rate: 4g/m²
- Product: ELS4 Meadow Grass Mixture for Wet Soils
- Supplier: Emery Seeds
- Sowing rate: 4g/m²
- Product: ELS5 Wetland Meadow Grass Mixture
- Supplier: Emery Seeds
- Sowing rate: 4g/m²
- Product: ELS6 Wetland Meadow Grass Mixture for Wet Soils
- Supplier: Emery Seeds
- Sowing rate: 4g/m²
- Product: ELS7 Wetland Meadow Grass Mixture for Wet Soils
- Supplier: Emery Seeds
- Sowing rate: 4g/m²
- Product: ELS8 Wetland Meadow Grass Mixture for Wet Soils
- Supplier: Emery Seeds
- Sowing rate: 4g/m²
- Product: ELS9 Wetland Meadow Grass Mixture for Wet Soils
- Supplier: Emery Seeds
- Sowing rate: 4g/m²
- Product: ELS10 Wetland Meadow Grass Mixture for Wet Soils
- Supplier: Emery Seeds
- Sowing rate: 4g/m²

A risk assessment has been carried out on this design. Residual risks following this process are listed below. A copy of the full Design Risk Register is also available on request from EDP.

- Soft landscaping implementation within a construction environment (across the site).
- Installing trees (across the site).
- Water bodies (attenuation ponds and swales).
- Working within close proximity of underground services.
- Planting on slopes and.
- Working within close proximity of highways.



purpose of issue PLANNING			
1	Ecological Buffer Advice, Trim Trail	18-10-2022	LH
2	Amended	06-07-2022	LCH
3		04-07-2022	LCH
4		04-07-2022	LCH
5			
6			

client: Trifax Symmetry Ltd and Siemens Healthineers
 project title: Symmetry Park, Oxford North
 drawing title: Detailed Landscape Proposals
 date: 18 OCTOBER 2022
 drawing number: edp2425_00171
 scale: 1:200 @ A0

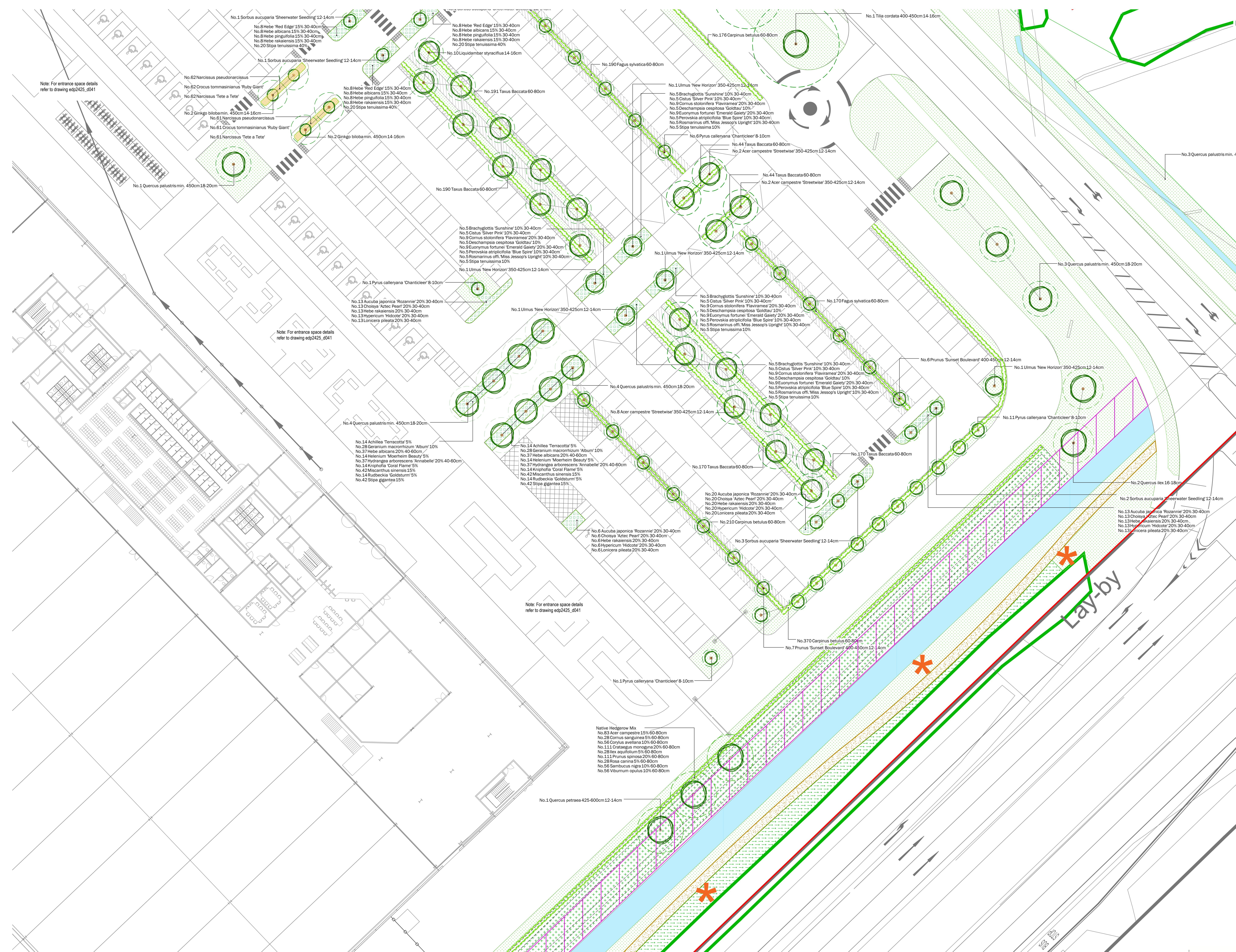
Sheet 7 of 17
 drawn by: LCH
 checked: BC
 QA: RB

edp the environmental dimension partnership
 Registered office: 01285 740427 www.edp.co.uk info@edp.co.uk

Note: For entrance space details refer to drawing edp2425_d041

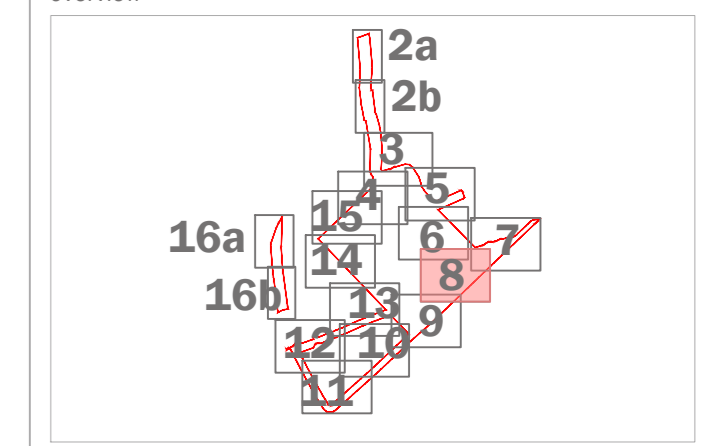
EI Sub Sta

Lay-by



- Site boundary
- Existing Trees and Tree Groups to be Retained
Refer to the Arboricultural Report
- Existing Hedges to be Retained
Refer to the Arboricultural Report
- Proposed Tree Planting
- Proposed Hedge Row Planting
- Proposed Turf
Product: Meadow Turf or similar
Supplier: Ribbles
- Proposed Flowering Lawn Mixture
Product: E11 Flowering Lawn Mixture
Supplier: Emerald Seeds
- Proposed Species Rich Meadow Grass
Product: E12 Basic General Purpose Meadow Mixture
Supplier: Emerald Seeds
- Proposed Tussock Grass Mixture
Product: E13 Tussock Grass Mixture
Supplier: Emerald Seeds
- Proposed Hedgerow Grass Mixture
Product: E14 Hedgerow Mixture
Supplier: Emerald Seeds
- Proposed Ornamental Planting
- Proposed Bulb Planting
- Proposed Native Swathe Planting
- Proposed Native Feathered Tree and Shrub Mix
- Proposed Wetland Meadow Grass to Attenuation Basin
Product: E15 Meadow Grass Mixture for Wet Soils
Supplier: Emerald Seeds
- Proposed Diverted Watercourse
Refer to Engineers drawings for details
- Extent of Structural Soil / Underground Crate System
to ensure required rooting volumes for tree planting
- Proposed Gravel for Maintenance Access
- Proposed Footpath
Gravel/grass footpath with timber edging. No-rig construction
- Proposed Boundary Fencing
Refer to Architects drawings for details
- * Proposed Trim Trail
Indicate locations of trim trail / outdoor fitness equipment along proposed trim trail route
- Proposed Earth Mounding
with max 3:1 slope
- Proposed Root Barriers
Product: Root Barrier (to be confirmed by Engineer)
Supplier: GreenBlue Urban or similar approved
- Ecological Buffer Zone
5m buffer from Wendlebury Brook

- A A risk assessment has been carried out on this design. Residual risks following this process are listed below. A copy of the full Design Risk Register is also available on request from EDP.
1. Soft landscaping implementation within a construction environment (across the site);
 2. Installing trees (across the site);
 3. Water bodies (attenuation ponds and swales);
 4. Working within close proximity of underground services;
 5. Planting on slopes; and
 6. Working within close proximity of highways.
- For further guidance, refer to HSE Construction Design and Management Regulations 2015.



This drawing is to be read in conjunction with all other drawings and specifications within this package. All dimensions are in millimeters unless otherwise specified. All work shall be done in accordance with the current British Standards. All work shall be done in accordance with the current British Standards. All work shall be done in accordance with the current British Standards.

purpose of issue	PLANNING	18-10-2022	LH
T Ecological Buffer Advice, Trim Trail	Attended	06-07-2022	LCH
rev / description	date	date	by
client Trifox Symmetry Ltd and Siemens Healthineers			
project title Symmetry Park, Oxford North			
drawing title Detailed Landscape Proposals			
date	18 OCTOBER 2022	drawn by	LH
drawing number	edp2425_60171	checked by	BC
scale	1:200 @ A0	QA	RB

Sheet 8 of 17

edp the environmental dimension partnership

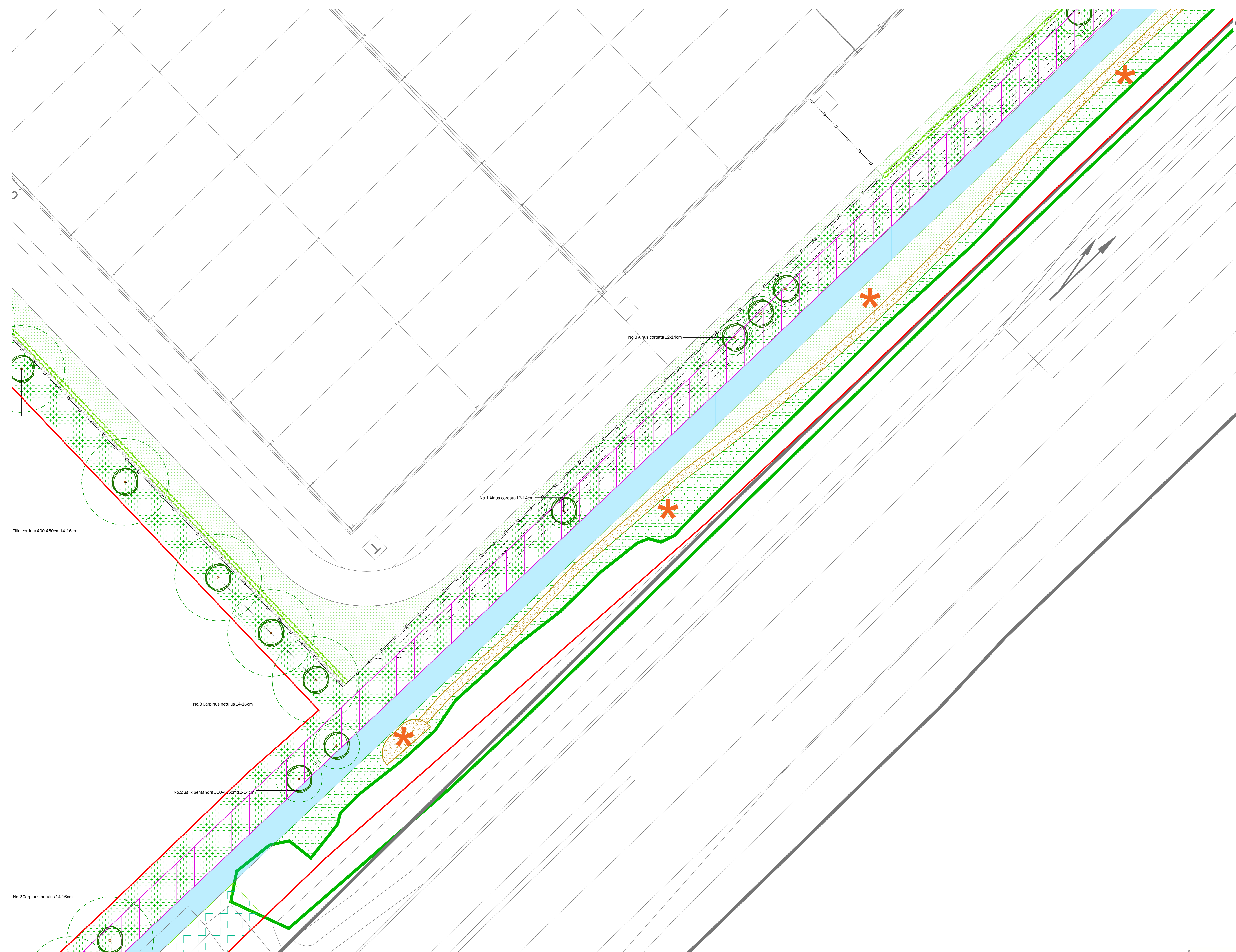
Registered office: 01285 740427 www.edp-uk.co.uk info@edp-uk.co.uk

Note: For entrance space details refer to drawing edp2425_0041

Note: For entrance space details refer to drawing edp2425_0041

Note: For entrance space details refer to drawing edp2425_0041

Native Hedgerow Mix
 No. 83 Acer campestre 15% 60-80cm
 No. 28 Cornus sanguinea 5% 60-80cm
 No. 50 Corylus avellana 10% 60-80cm
 No. 111 Crataegus monogyna 20% 60-80cm
 No. 28 Ilex aquifolium 5% 60-80cm
 No. 111 Prunus spinosa 20% 60-80cm
 No. 28 Rosa canina 5% 60-80cm
 No. 56 Sambucus nigra 10% 60-80cm
 No. 56 Viburnum opulus 10% 60-80cm

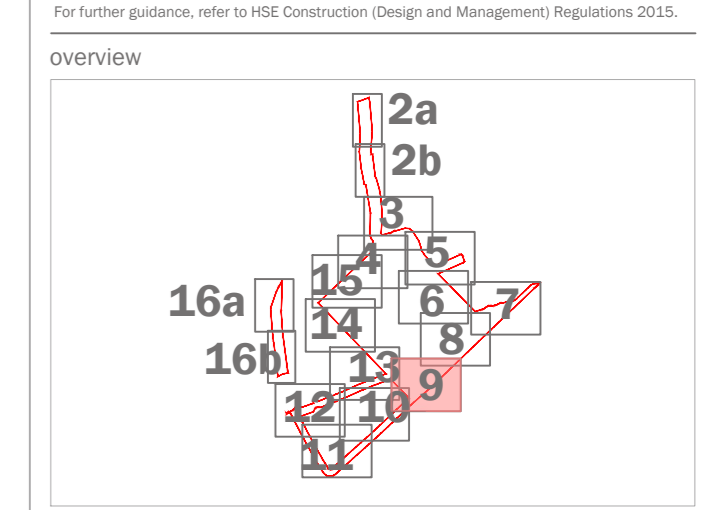


- Site boundary
- Existing Trees and Tree Groups to be Retained
Refer to the Arboricultural Report
- Existing Hedgerows to be Retained
Refer to the Arboricultural Report
- Proposed Tree Planting
- Proposed Hedgerow Planting
- Proposed Turf
Product: Mediation Turf or similar
Supplier: Robson
- Proposed Flowering Lawn Mixture
Product: ELL Flowering Lawn Mixture
Supplier: Emergence Seeds
Sowing rate: 4g/m²
- Proposed Species-Rich Meadow Grass
Product: EML Basic General Purpose Meadow Mixture
Supplier: Emergence Seeds
Sowing rate: 4g/m²
- Proposed Tussock Grass Mixture
Product: EGD Tussock Grass Mixture
Supplier: Emergence Seeds
Sowing rate: 5g/m²
- Proposed Hedgerow Grass Mixture
Product: EHL Hedgerow Mixture
Supplier: Emergence Seeds
Sowing rate: 5g/m²
- Proposed Ornamental Planting
- Proposed Bulb Planting
- Proposed Native Sward Planting
- Proposed Native Feathered Tree and Shrub Mix
- Proposed Wetland Meadow Grass to Attenuation Basin
Product: EGG Meadow Grass Mixture for Wet Soils
Supplier: Emergence Seeds
Sowing rate: 4g/m²
- Proposed Diverted Watercourse
Refer to Engineers drawings for details
- Extent of Structural Soil/ Underground Crate System
To ensure required rooting volumes for tree planting
- Proposed Gravel for Maintenance Access
- Proposed Footpath
Graded gravel footpath with timber edging. No-tie construction
- Proposed Boundary Fenceline
Refer to Architects drawings for details
- Proposed Tree Trail
Indicative locations of tree trail/ outdoor fitness equipment along proposed tree trail route
- Proposed Earth Mounding
With max 2.5m slope
- Proposed Root Barriers
Product: Reflex Barrier (depths to be confirmed by Engineer)
Supplier: GreenBlue Urban or similar approved
- Ecological Buffer Zone
5m buffer from Wendesbury Brook

A risk assessment has been carried out on this design. Residual risks following this process are listed below. A copy of the full Design Risk Register is also available on request from EDP.

1. Soft landscaping implementation within a construction environment (across the site);
2. Installing trees (across the site);
3. Water bodies (attenuation ponds and swales);
4. Working within close proximity of underground services;
5. Planting on slopes; and
6. Working within close proximity of highways.

For further guidance, refer to HSE Construction Design and Management Regulations 2015.



This drawing is to be read in conjunction with all other drawings and specifications within the package. Please ensure that you have approved the final design and specification and that you are aware of all drawings and specifications within the package. All drawings are the property of EDP and should not be used for any other purpose without the written consent of EDP. EDP shall not be responsible or liable for any loss or damage of any kind arising from the use of this drawing or any other drawing or specification. The drawing must be used in accordance with the terms and conditions of the EDP Terms and Conditions.

purpose of issue			
T	Ecological Buffer Advice, Tree Trail	18-10-2022	LH
#	Amended	06-07-2022	LCH
d		01-07-2022	LCH
rev	description	date	by

client
Trifax Symmetry Ltd and Siemens Healthineers

project title
Symmetry Park, Oxford North

drawing title
Detailed Landscape Proposals

date
18 OCTOBER 2022

drawing number
edp2425_60171

scale
1:200 @ A0

Sheet 9 of 17
drawn by LH
checked BC
QA RB

the environmental dimension partnership
Registered office: 01285 740427 www.edp-uk.co.uk info@edp-uk.co.uk