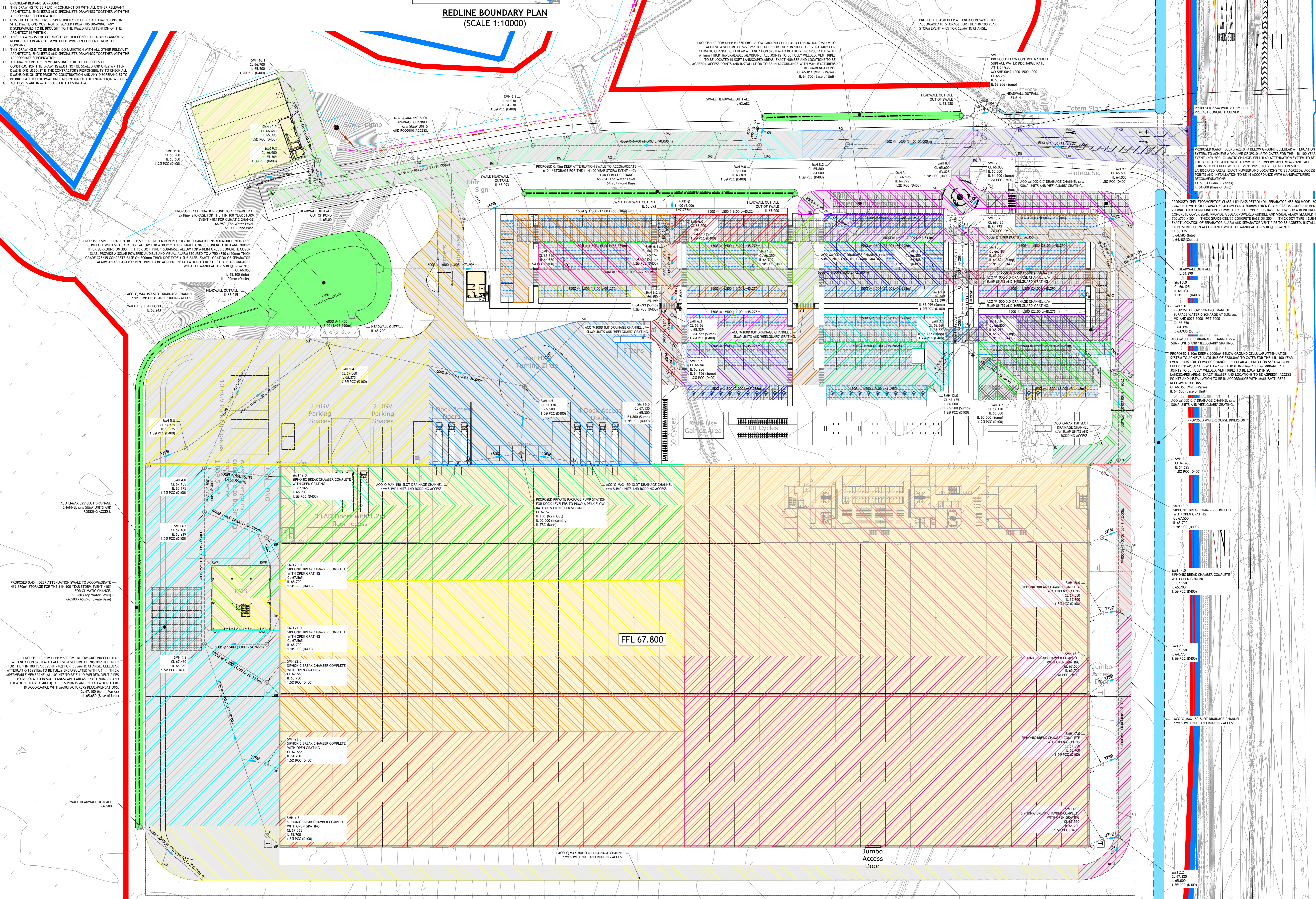
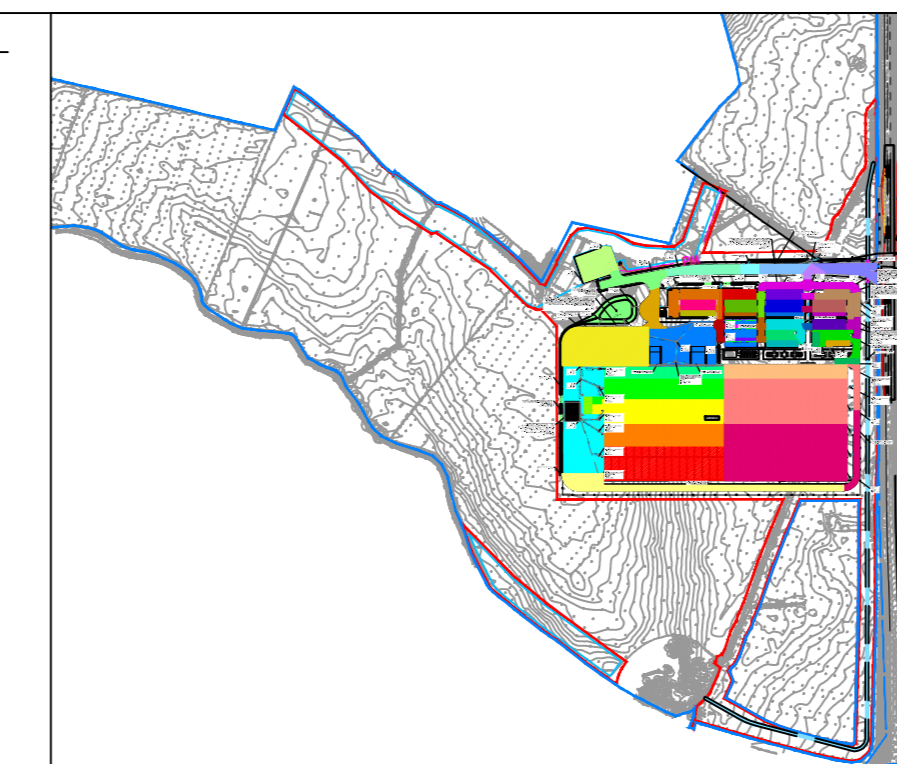
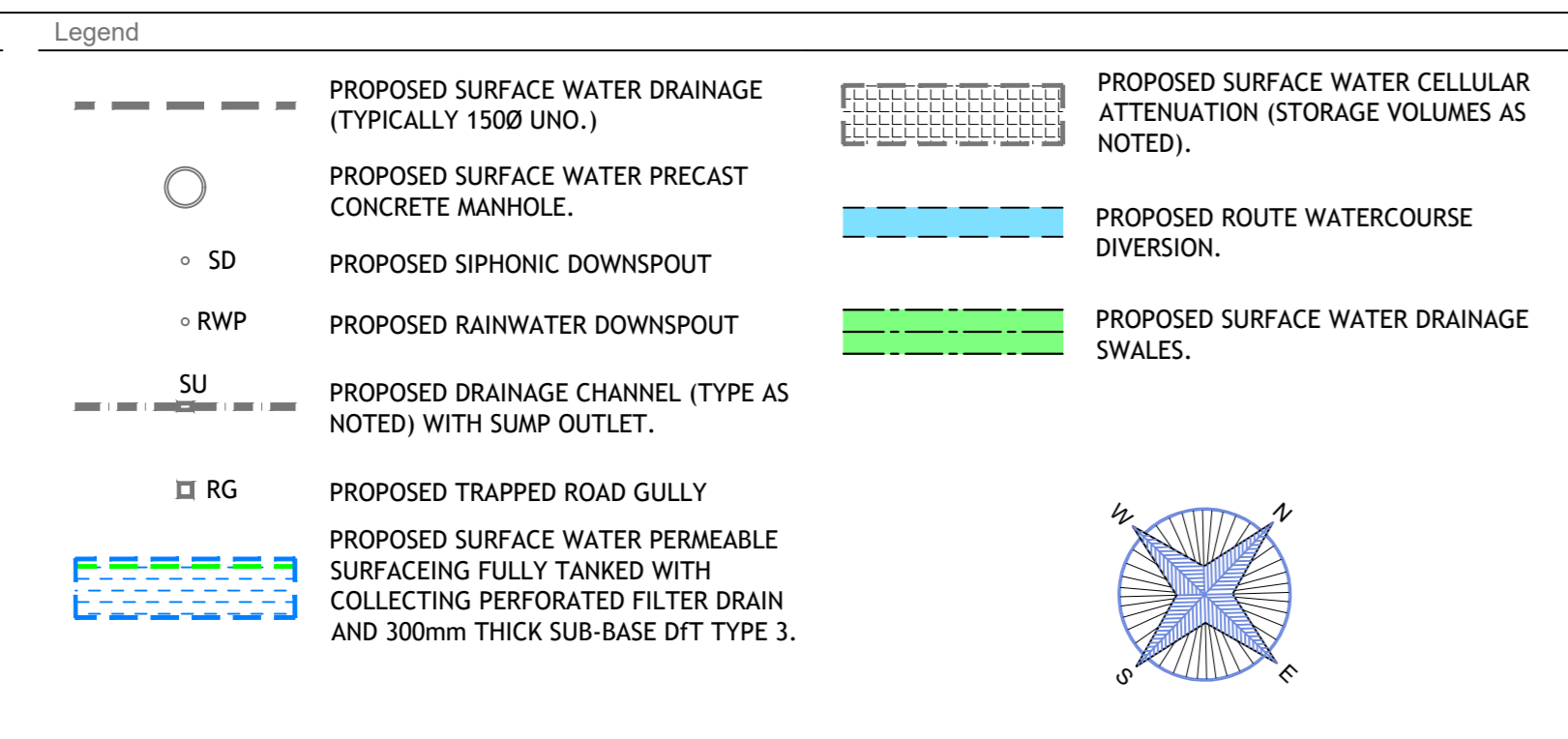


- Notes
- THE WORKS SHALL BE IN ACCORDANCE WITH THE NATIONAL BUILDING SPECIFICATION.
 - THE LOCATION LINE & LEVEL OF ALL KNOWN EXISTING DRAINAGE NETWORK INDICATED ON THE DRAWINGS ARE APPROXIMATE AND FOR GUIDANCE PURPOSES ONLY.
 - IT IS THE CONTRACTOR'S RESPONSIBILITY TO DETERMINE THEIR EXACT LINE AND LEVEL BY MEANS OF HAND DITCHED TIE PINS PRIOR TO THE COMMENCEMENT OF ANY EXCAVATION WORKS ON SITE. THE CONTRACTOR SHALL TAKE ALL NECESSARY PRECAUTIONS AND MAINTAIN THROUGHOUT THE DURATION OF THE CONTRACT A FULL TRAFFIC MANAGEMENT SYSTEM TO ENSURE SAFE PASSAGE OF VEHICLES/PEDESTRIANS IN THE VICINITY OF THE WORKS. ALL TRAFFIC SIGNS, SIGNALS, BARRIERS ETC. SHALL BE IN ACCORDANCE WITH CHAPTER 6 OF THE TRAFFIC SIGNS MANUAL.
 - THE CONTRACTOR SHALL MAKE ADEQUATE PROVISION FOR SEALING WITH AND DISPOSING OF GROUND/SURFACE WATER ENCOUNTERED DURING EXCAVATIONS.
 - ALL SOFT / HARD PAVED AREAS AFFECTED BY THE WORKS SHALL BE FULLY RENOVATED FOLLOWING THE INSTALLATION OF ALL DRAINAGE WORKS. ALL SURFACE MARKINGS AFFECTED BY THE WORKS SHALL BE FULLY RENOVATED. ALL SURPLUS EXCAVATED MATERIAL SHALL BE DISPOSED IN A DESIGNATED AREA ON SITE.
 - UPON COMPLETION OF THE WORKS THE CONTRACTOR SHALL PROVIDE AS BUILT SETTING OUT CO-ORDINATE AND LEVEL INFORMATION.
 - PROVISION WITH LESS THAN 750mm OF COVER IN TRAFFICED AREAS TO BE CONCRETE ENCASED, (BEDDING CLASS 2).
 - PROVISION WITH MORE THAN 750mm OF COVER TO HAVE CLASS 5 GRANULAR BED AND SURROUNDING.
 - THIS DRAWING IS TO BE READ IN CONJUNCTION WITH ALL OTHER RELEVANT ARCHITECT'S, ENGINEERS AND SPECIALIST'S DRAWINGS TOGETHER WITH THE APPROPRIATE SPECIFICATION.
 - IT IS THE CONTRACTOR'S RESPONSIBILITY TO CHECK ALL DIMENSIONS ON SITE. DIMENSIONS MUST NOT BE SCALED FROM THIS DRAWING. ANY DISCREPANCIES TO BE BROUGHT TO THE IMMEDIATE ATTENTION OF THE ARCHITECT IN WRITING.
 - THIS DRAWING IS THE COPYRIGHT OF TIER CONSULT LTD AND CANNOT BE REPRODUCED IN ANY FORM WITHOUT WRITTEN CONSENT FROM THE COMPANY.
 - THIS DRAWING IS TO BE READ IN CONJUNCTION WITH ALL OTHER RELEVANT ARCHITECT'S, ENGINEERS AND SPECIALIST'S DRAWINGS TOGETHER WITH THE APPROPRIATE SPECIFICATION.
 - DIMENSIONS ARE IN METRES UNLESS OTHERWISE STATED.
 - CONSTRUCTION THIS DRAWING MUST NOT BE SCALED AND ONLY WRITTEN DIMENSIONS ARE TO BE BROUGHT TO THE IMMEDIATE ATTENTION OF THE ARCHITECT IN WRITING.
 - THIS DRAWING IS THE COPYRIGHT OF TIER CONSULT LTD AND CANNOT BE REPRODUCED IN ANY FORM WITHOUT WRITTEN CONSENT FROM THE COMPANY.
 - THIS DRAWING IS TO BE READ IN CONJUNCTION WITH ALL OTHER RELEVANT ARCHITECT'S, ENGINEERS AND SPECIALIST'S DRAWINGS TOGETHER WITH THE APPROPRIATE SPECIFICATION.
 - DIMENSIONS ARE IN METRES UNLESS OTHERWISE STATED.
 - CONSTRUCTION THIS DRAWING MUST NOT BE SCALED AND ONLY WRITTEN DIMENSIONS ARE TO BE BROUGHT TO THE IMMEDIATE ATTENTION OF THE ARCHITECT IN WRITING.
 - ALL LEVELS ARE IN METRES UNLESS OTHERWISE STATED.



PIPE REF.	U/S MH REF.	IMPERMEABLE AREA (m²)
1.000	SMH 4.3	7421
2.000	SMH 22.0	4830
3.000	SMH 21.0	5028
1.001	SMH 4.2	306
4.000	SMH 20.0	5028
1.002	SMH 4.1	
5.000	SMH 19.0	2591
1.003	SMH 4.0	
6.000	SMH 1.4	6972
7.000	SMH 5.0	4680
6.001	SMH 1.5	5541
8.000		2968
1.004		
1.005		
1.006	SMH 1.3	
1.007	SMH 1.2	
1.008	SMH 1.1	
9.000		238
9.001	SMH 6.5	
10.000		704
9.002	SMH 6.4	
11.000		464
9.003	SMH 6.3	252
12.000		437
13.000		225
9.004	SMH 6.2	
14.000		704
15.000		789
9.005	SMH 6.1	
16.000		568
17.000		1105
9.006	SMH 6.0	
9.007		915
9.008		303
9.009	SMH 3.1	
18.000		155
18.001	SMH 3.7	293
19.000		238
19.001	SMH 12.0	
20.000		1081
21.000		692
18.002	SMH 3.6	78
22.000		482
23.000		678
18.003	SMH 3.5	
24.000		496
25.000		237
18.004	SMH 3.4	
26.000		734
27.000		820
18.005	SMH 3.3	
28.000		862
29.000		522
28.001	SMH 7.0	1155
9.010	SMH 3.2	
9.011	SMH 3.0	
30.000	SMH 2.2	12936
30.001	SMH 2.1	10300
30.002	SMH 2.0	2591
1.009	SMH 1.0	
32.000	SMH 10.1	1564
31.001	SMH 10.0	
31.002	SMH 9.3	1020
31.003	SMH 9.1	998
31.004	SMH 9.0	272
33.000	SMH 9.1	1029
34.000	SMH 8.2	962
33.001	SMH 8.1	210
31.006	SMH 8.0	
TOTAL AREA		= 92275m²

P1 31.05.22 DRL Preliminary issue for information only DRL

Rev	Date	By	Description	Appd
1				

PRELIMINARY

TIER CONSULT

Tier Consult Ltd
Richmond House
Sandpiper Court
Chester Business Park
Chester CH4 9QZ
t: 01244 684900

Client: TRITAX SYMMETRY

Project: SYMMETRY PARK, OXFORD NORTH

Issue: IMPERMEABLE AREAS PLAN

Scale	Drawn	Checked	Revision
1:500@A0	DRL	PJB	P1
May22			

Drawing Ref: T/20/2407