

- IF THIS DRAWING HAS BEEN RECEIVED ELECTRONICALLY IT IS THE RECIPIENT'S RESPONSIBILITY TO PRINT THE DOCUMENT TO CORRECT SCALE.
- ALL DIMENSIONS ARE IN MILLIMETRES UNLESS STATED OTHERWISE. IT IS RECOMMENDED THAT INFORMATION IS NOT SCALED OFF THIS DRAWING.
- THIS DRAWING SHOULD BE READ IN CONJUNCTION WITH ALL OTHER RELEVANT DRAWINGS AND SPECIFICATIONS.

External kerb Types	Spec
Type 1	Standard 125 x 255 HB2 Kerb (Roads)
Type 2	Standard 50x150 Kerb (Pathways)
Type 3	Standard 125 x 150 BN Kerb (Drop kerb)
Type 4	Standard 125 x 150 BN Kerb - FLAT TOP
Type 5	Standard 125 x 255 Precast concrete channel load flush - see S.E. details

CAR PARK ISLE/ ROAD CONSTRUCTION
Surface course Asphalt construction - See Engineer's build up specification.

S1

CAR PARKING BAYS
Surface course 240mm x 120mm x 80mm thick Tolerbore permeable paving concrete block pavibus to BS EN 1338:2003
colour: Charcoal... demarcation line: Natural

S2

FOOTWAY CONSTRUCTION
Surface course 400mm x 150mm x 80mm thick Tolerbore Manhattan (TBC) pavibus to BS EN 1338:2003

S3

FOOTWAY CONSTRUCTION
Surface course 600mm x 600mm Concrete Paving slabs (product TBC) to BS EN 1338:2003

S4

BASE CONSTRUCTION
Surface course Brush finished concrete slab with troweled edges

S5

SITE FENCING
SF1
Fence 1 Plastic Coated weld mesh fencing with metal posts.
Element number 82702009 - Rating A

ELECTRICAL VEHICLE CHARGING POINT
CG

PLEASE REFER TO ENGINEER'S DRAWINGS IN RELATION TO SURFACE AND BUILD UP DEPTH AND SPECIFICATION. ALL LEVELS/KERBS SHOULD BE READ IN CONJUNCTION WITH THE LATEST ENGINEERING LAYOUT DRAWING.

PLANNING ISSUE

PL2	PLANNING ISSUE 1	CG	06.12.23	MD	
PL1	PLANNING ISSUE 1	CG	30.11.23	MD	
REV.	AMENDMENT		DRAWN	DATE	AUTH'D

client: **WAE TECHNOLOGIES LTD**

project: **OXFORD TECHNOLOGY PARK**

site: **TECHNOLOGY DR, LANGFORD LN
KIDLINGTON, OXFORDSHIRE**

content: **BUILDING 5
PROPOSED SITE PLAN**

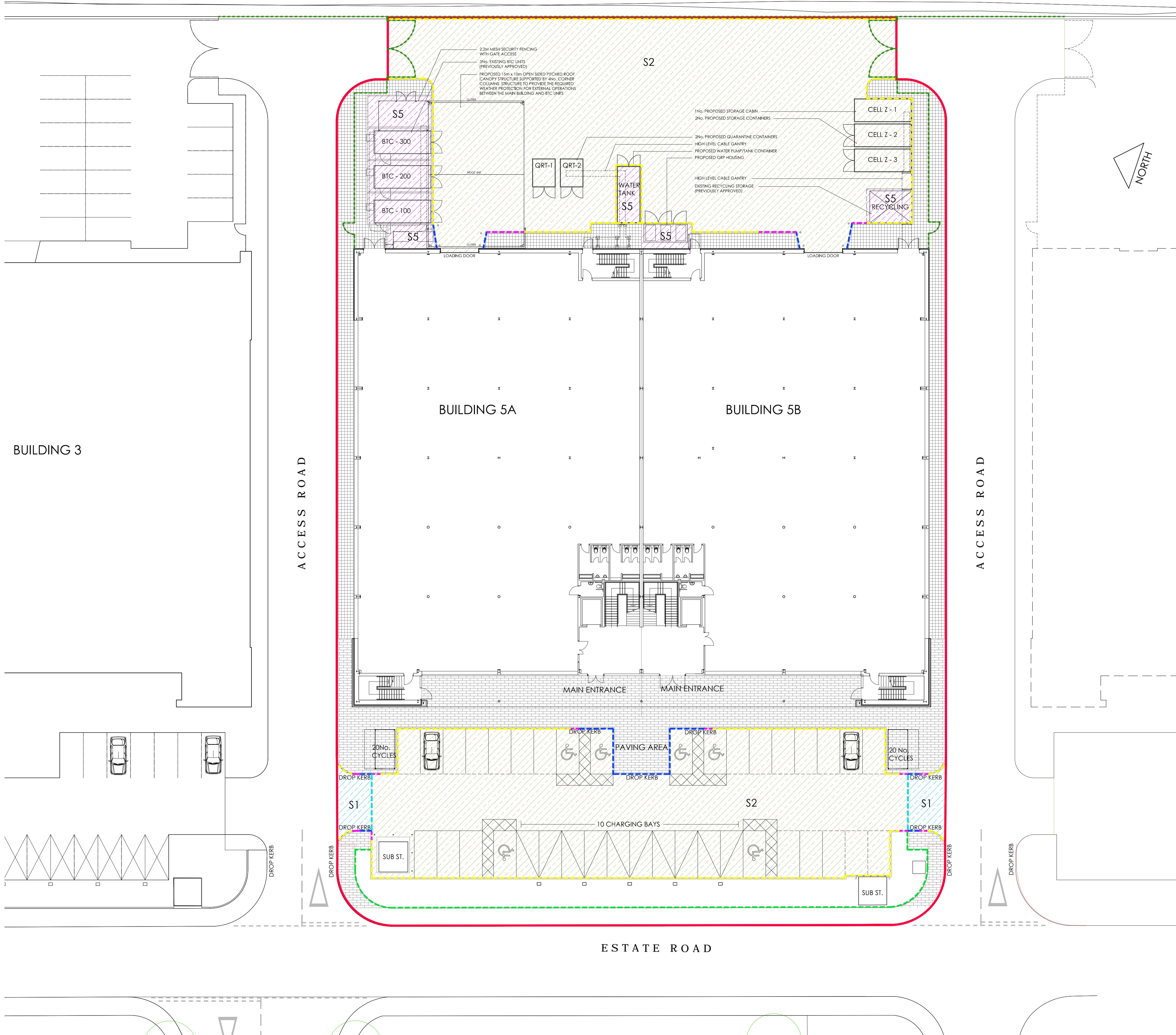
date: **NOVEMBER 2023**

scale: **1 : 200 @ A1**

ALL DIMENSIONS TO BE CHECKED ON SITE

GARRETT | MCKEE
ARCHITECTS
RILEY HOUSE
RILEY ROAD
MARLOW
BUCKINGHAMSHIRE
T. 01628 907000
www.garrettmckee.co.uk

dig.no: **2851 - 05** revision: **PL2**



BUILDING 3

ACCESS ROAD

ACCESS ROAD

ESTATE ROAD