



5. **ACCESS & STRATEGIES**

- Parking / Arrival strategy
- Servicing strategy
- Accessibility strategy
- Phasing plans

BICESTER MOTION - INNOVATION QUARTER

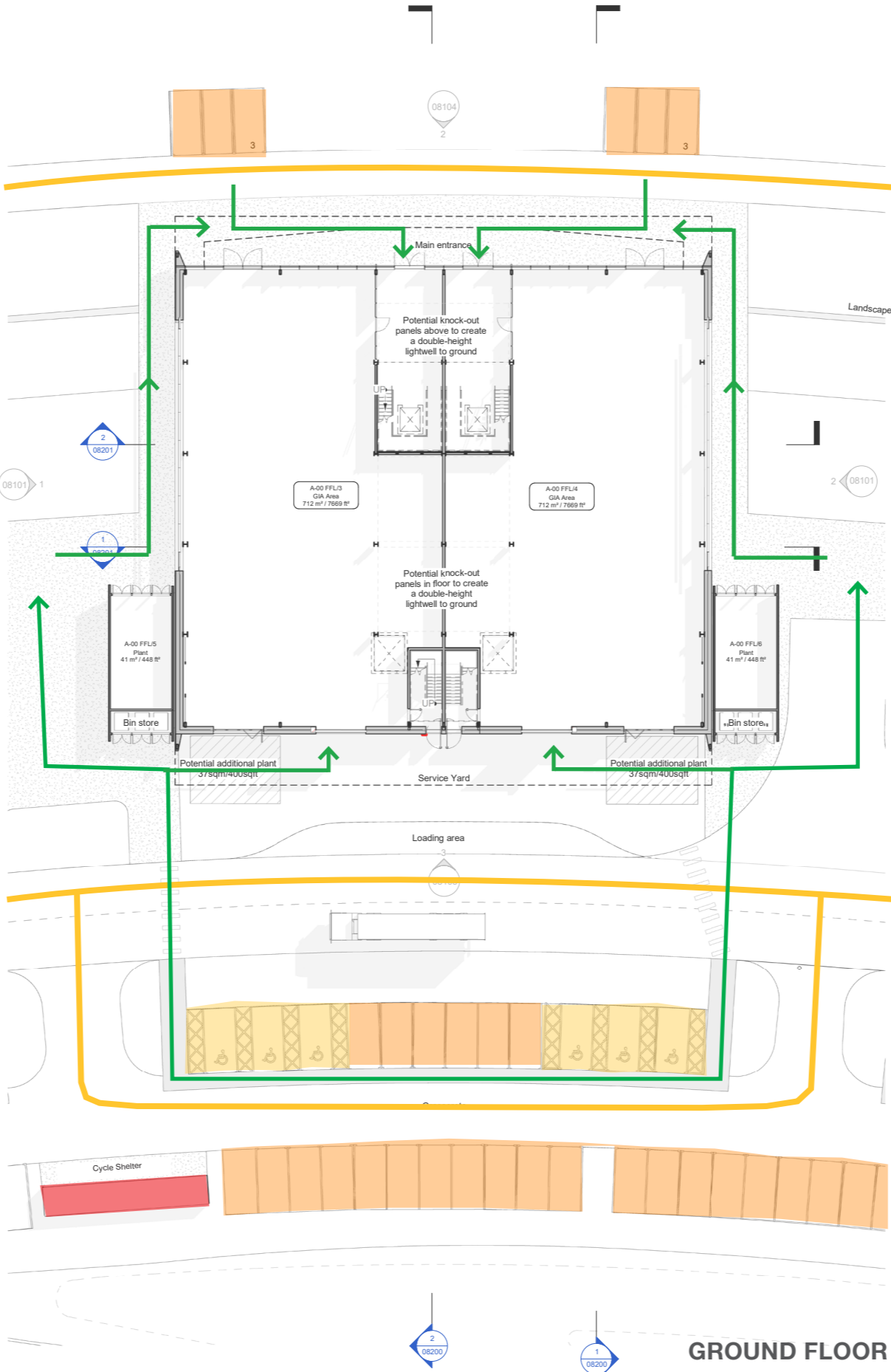
PARKING /ARRIVAL STRATEGY

3DReid

KEY:

- Accessible Car Parking
- Entry/Exit car route
- Cycle parking
- Standard parking spaces
- Pedestrian route

**25% will be EV charging spaces*



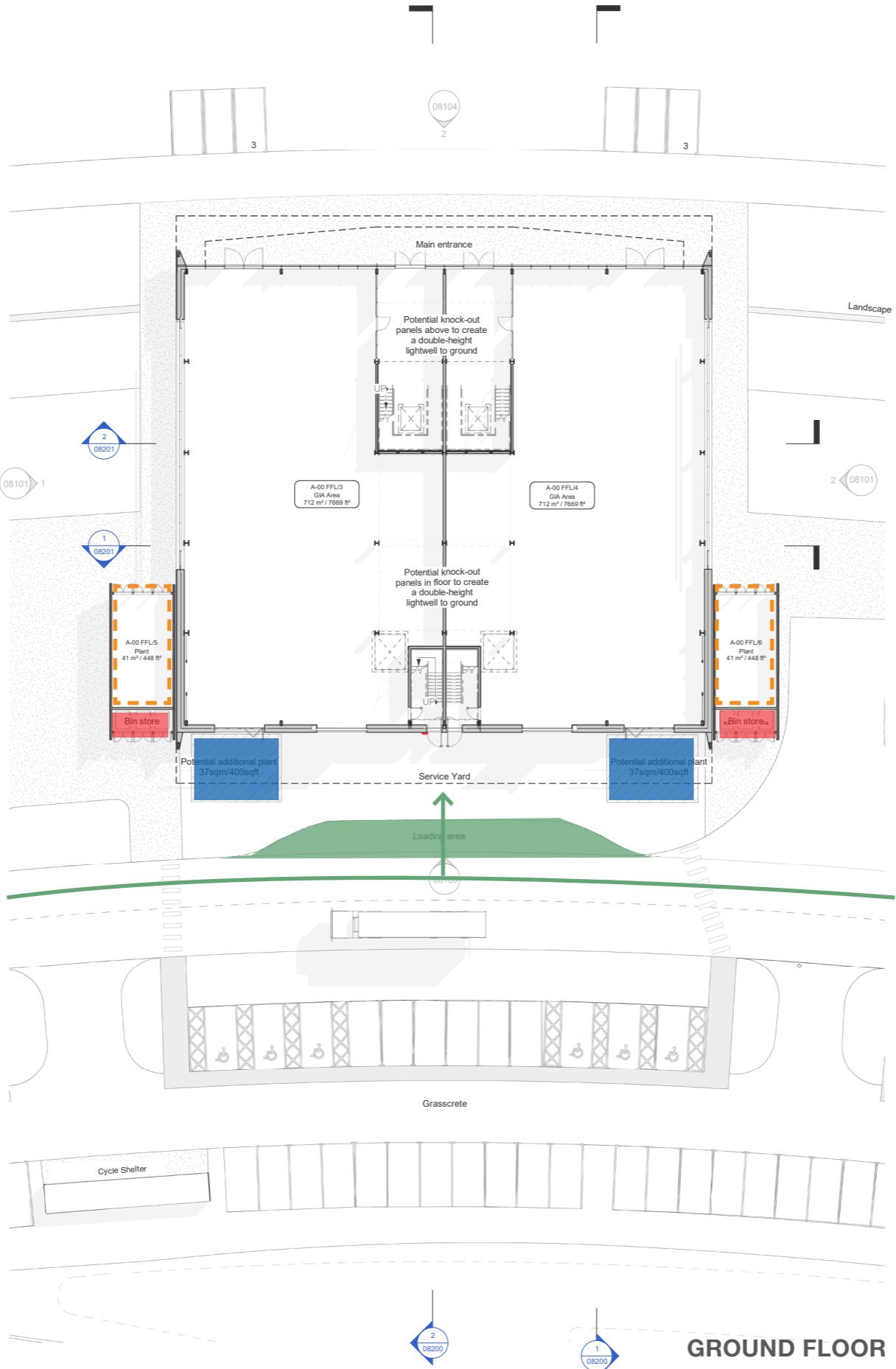
BICESTER MOTION - INNOVATION QUARTER

SERVICING STRATEGY

3DReid

KEY:

- Delivery bay
- Servicing and deliveries
- Bin Store
- Plant 41sqm/447sqft
- Potential additional plant 37sqm/400sqft
- Maintenance & Fire vehicle route



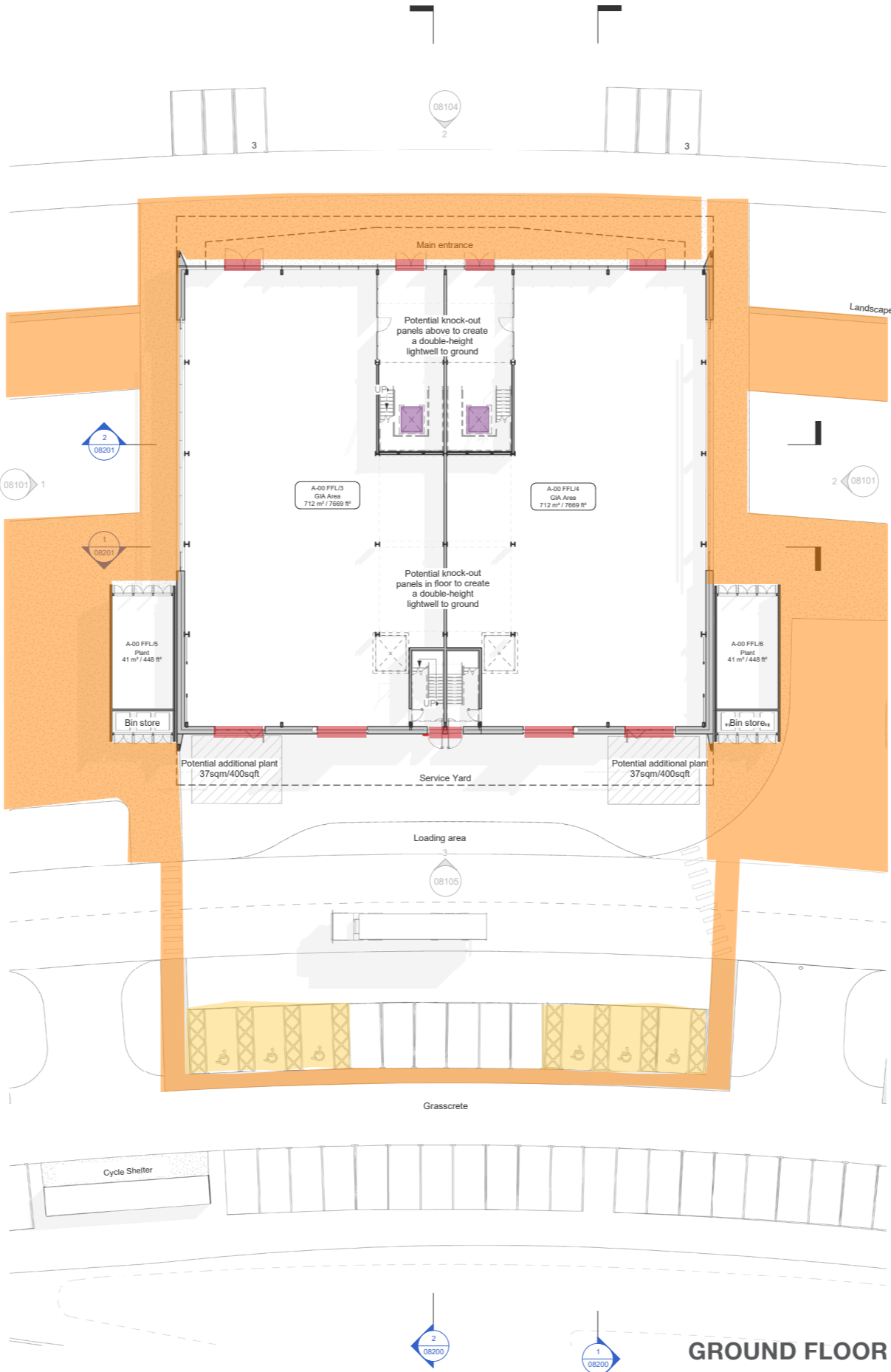
BICESTER MOTION - INNOVATION QUARTER

ACCESSIBILITY STRATEGY

3DReid

KEY:

- Accessible spaces
- Accessible surface with no tresholds
- Flush doorstep threshold
- Lift to upper floor



GROUND FLOOR

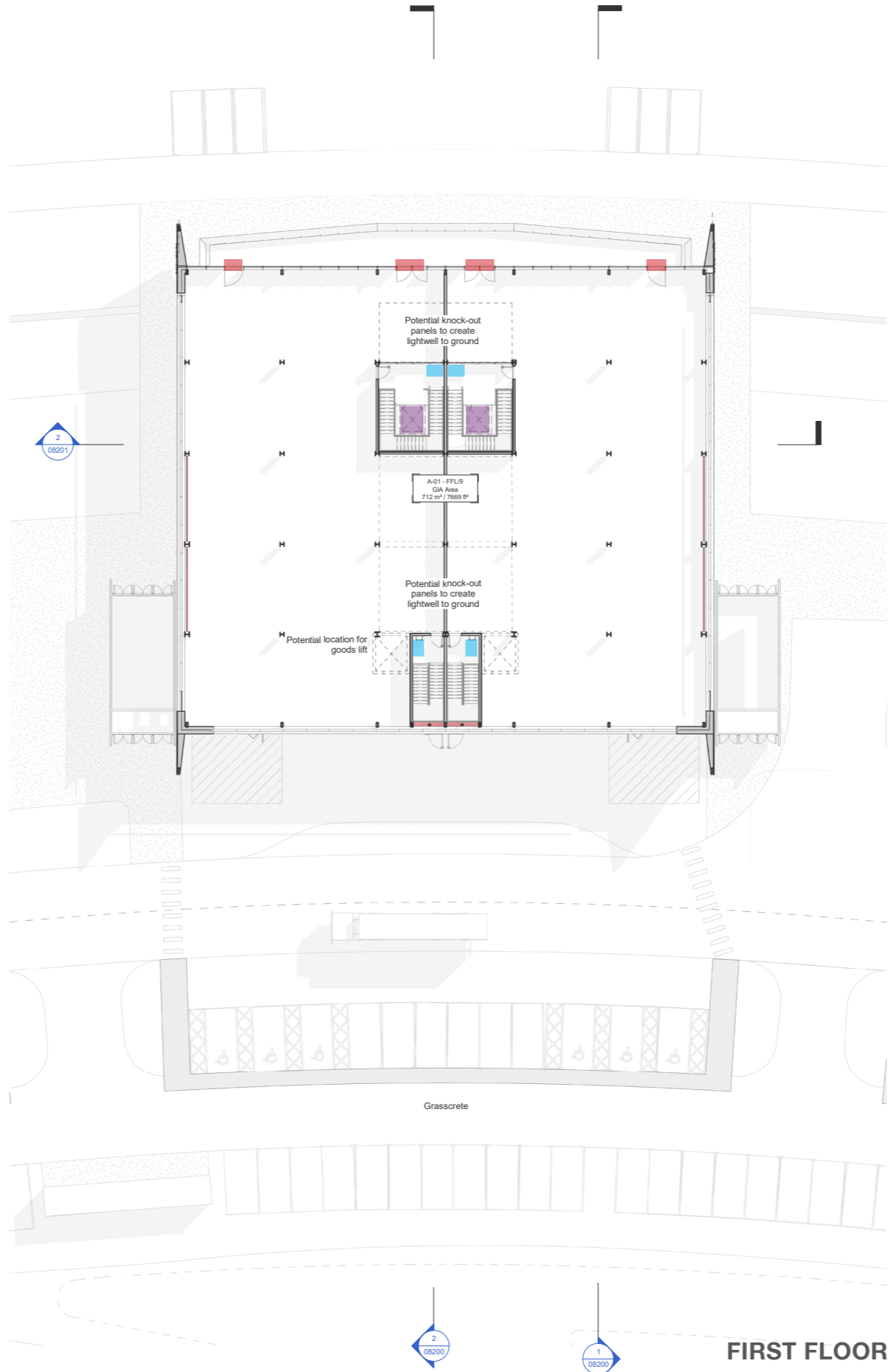
BICESTER MOTION - INNOVATION QUARTER

ACCESSIBILITY STRATEGY

3DReid

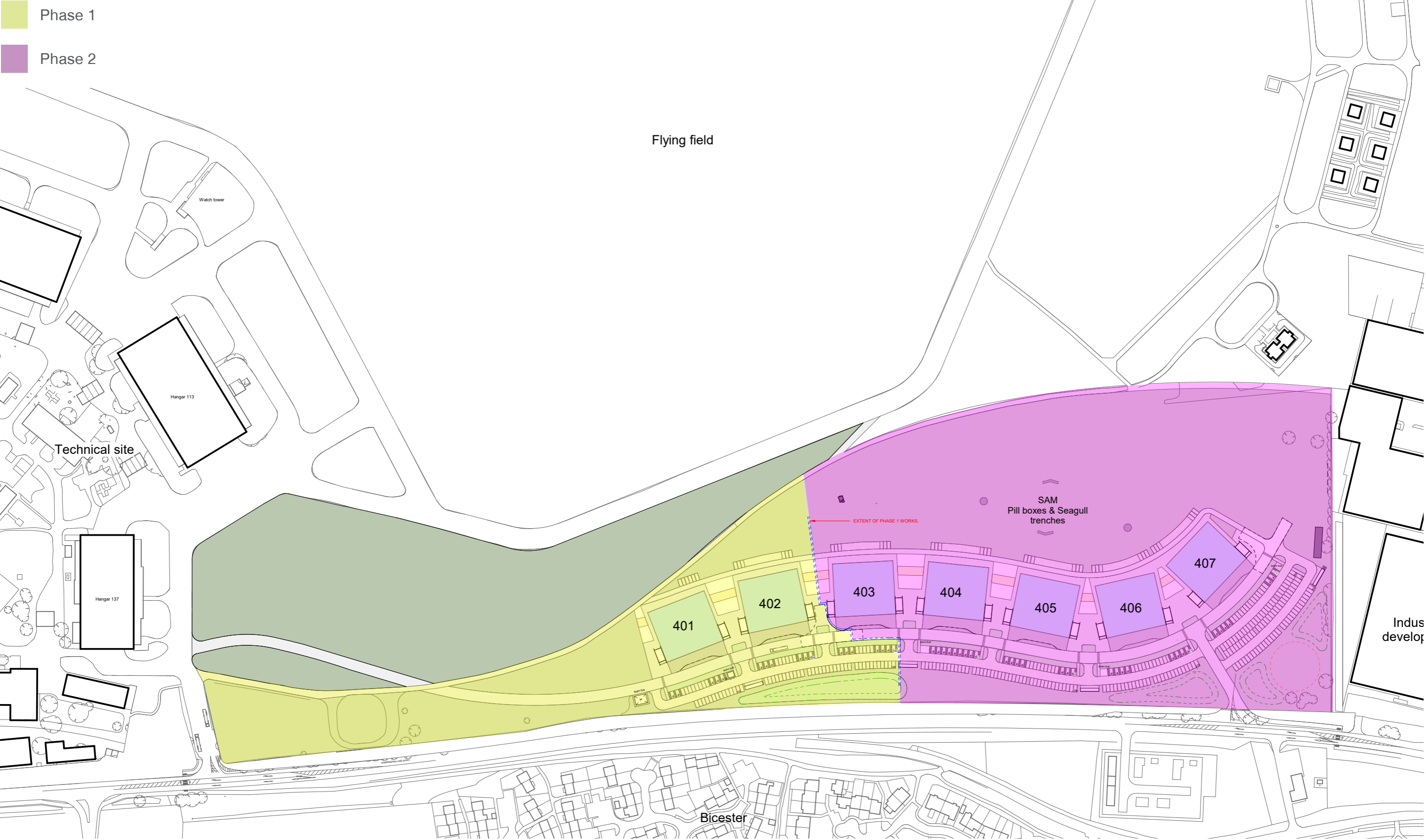
KEY:

- Lift to floor below
- Refuge space
- Flush doorstep threshold



BICESTER MOTION - INNOVATION QUARTER PHASING PLAN

3DReid



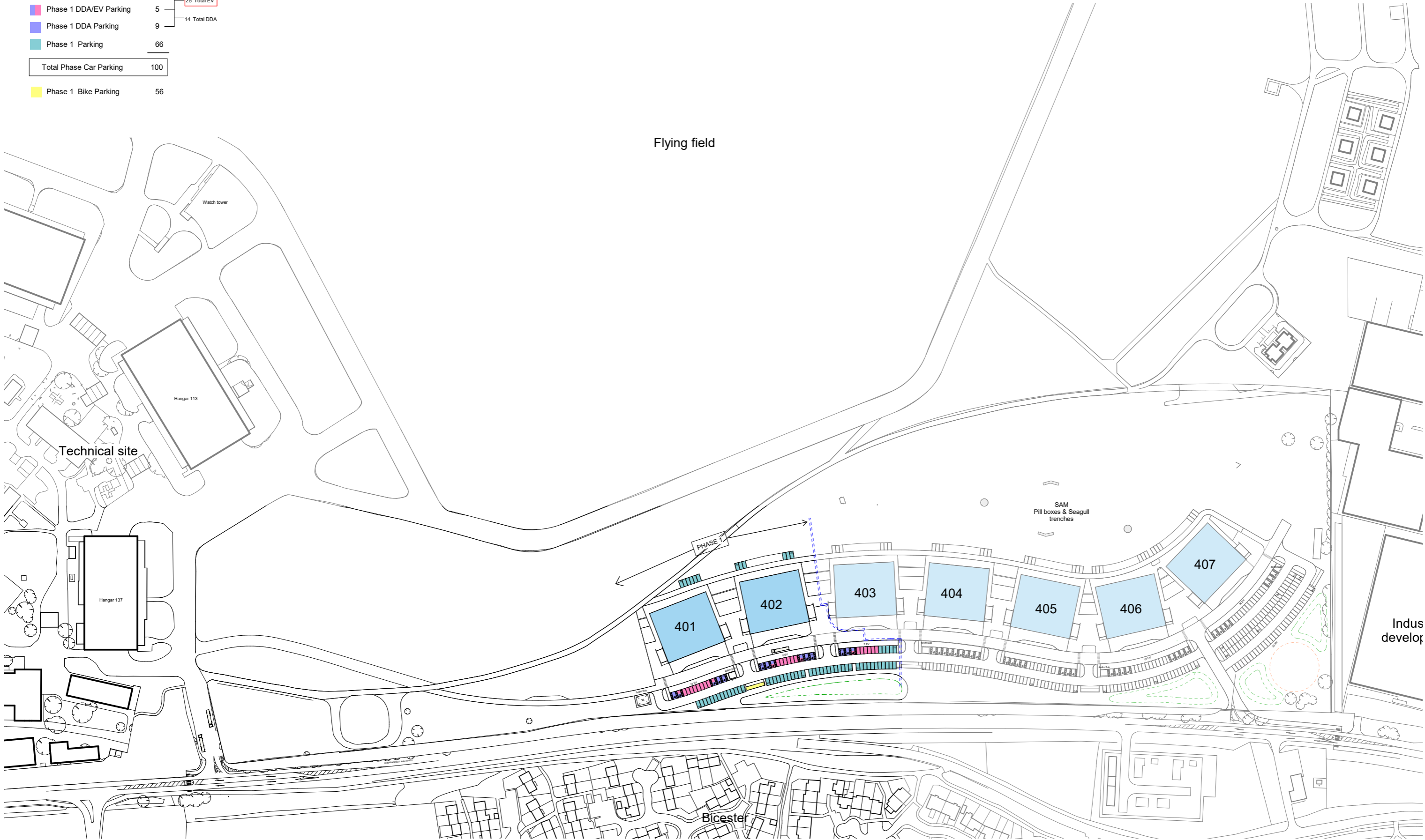
BICESTER MOTION - INNOVATION QUARTER

PHASE I PARKING

3DReid

Phase 1-2 Units

Phase 1 EV Parking	20	25 Total EV
Phase 1 DDA/EV Parking	5	
Phase 1 DDA Parking	9	14 Total DDA
Phase 1 Parking	66	
Total Phase Car Parking	100	
Phase 1 Bike Parking	56	



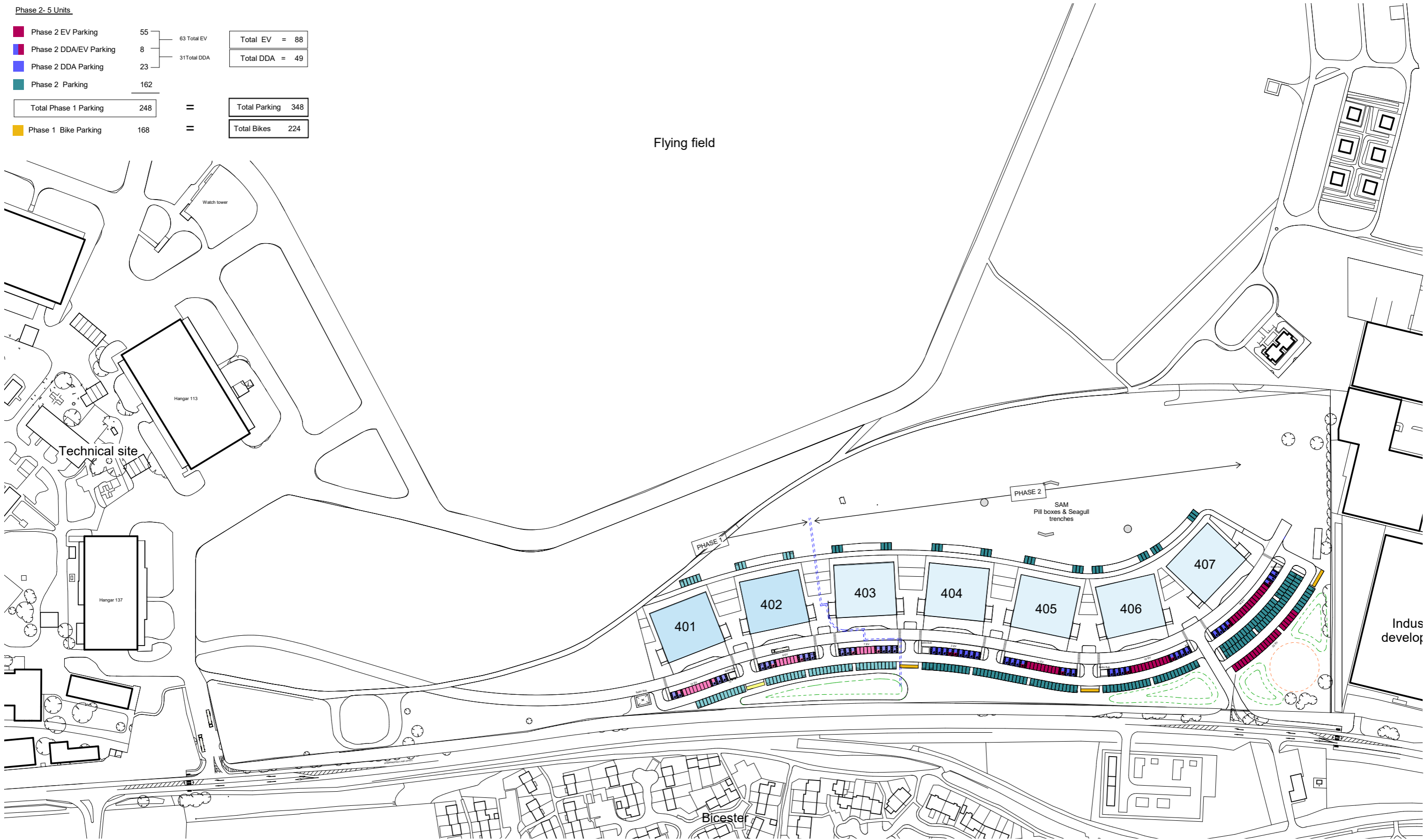
BICESTER MOTION - INNOVATION QUARTER

PHASE I & II PARKING

3DReid

Phase 2-5 Units

Phase 2 EV Parking	55	63 Total EV	Total EV = 88
Phase 2 DDA/EV Parking	8		
Phase 2 DDA Parking	23	31 Total DDA	Total DDA = 49
Phase 2 Parking	162		
Total Phase 1 Parking	248	=	Total Parking 348
Phase 1 Bike Parking	168	=	Total Bikes 224

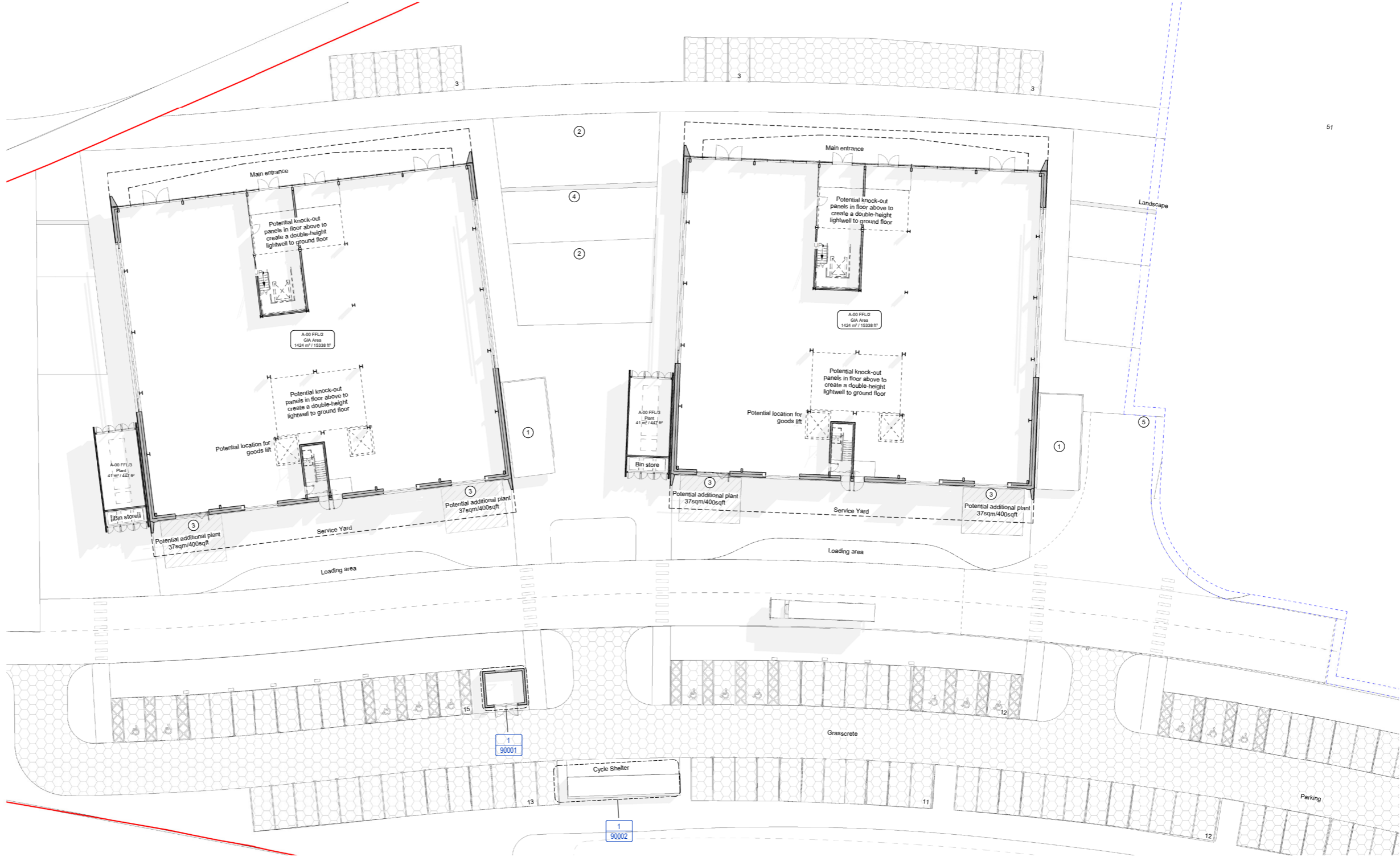


BICESTER MOTION - INNOVATION QUARTER

PHASE I BASE BUILD - GROUND FLOOR

Material Key

- ① Concrete plinth if additional plant is required
- ② Landscape by others. Refer to landscape details
- ③ Select varied door types
- ④ Walkway
- ⑤ Turning circle
- EV charging points (25 spaces incl. 3 accessible)



Birmingham
12 Caroline Street
Birmingham
B3 1TR
t +44 (0)345 271 6200

Edinburgh
36 North Castle Street
Edinburgh
EH2 3BN
t +44 (0)345 271 6300

Glasgow
45 West Nile Street
Glasgow
G1 2PT
t +44 (0)345 271 6350

London
1 Hills Place
London
W1F 7SA
t +44 (0)345 271 6100

Manchester
26 Cross Street
Manchester
M2 7AQ
t +44 (0)345 271 6250

3DReid