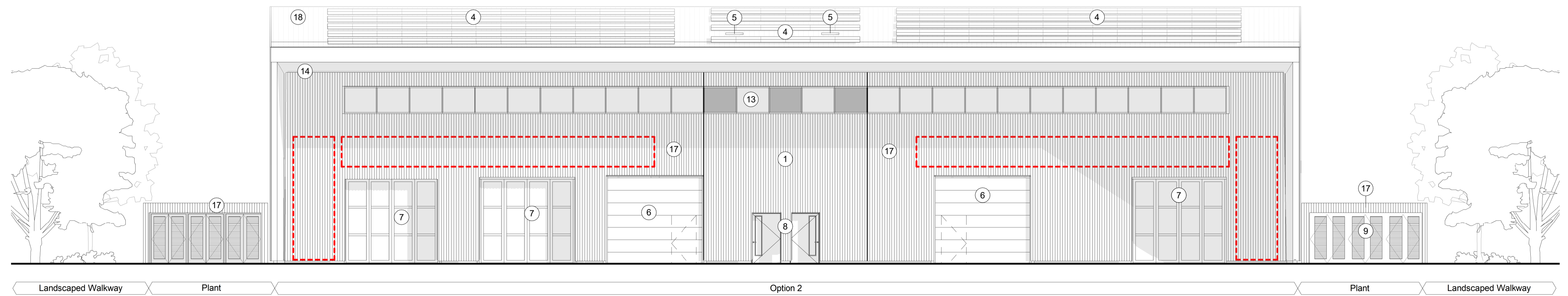


1 Typical building proposed rear elevation - D - Option 1- Single tenant
1 : 100



2 Typical building proposed rear elevation - D - Option 2
1 : 100

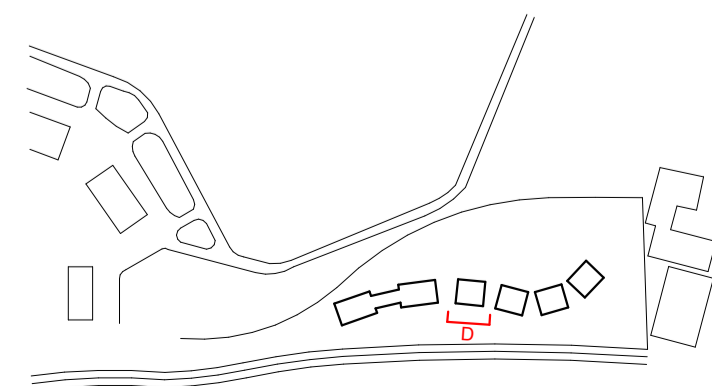
Notes

Do not scale from this drawing.

All dimensions are to be checked prior to construction and any discrepancies are to be identified to the Architect.

Copyright reserved.

This drawing is for Stage 03 cost purpose only



Material Key

- | | | | | |
|--|--------------------------------|--|---|-------------------------|
| 1 Vertical Profile metal cladding - Colour Zeus (Dark Grey) | 6 Metal Over Head Shutter Door | 11 Glazed Double Door | 16 Extruded Curtain Wall capping | Potential signage zone |
| 2 Curtain Wall System | 7 Glazed Bi-fold Door | 12 Glazed Balcony Balustrade (capless) | 17 Vertical Profile metal cladding - Colour Kronos (Black) | BPSP: Back Painted S.P. |
| 3 Standing Seam - Colour Kronos (Black) | 8 Fire Escape Door | 13 Fixed windows | 18 Euroclad Quadro SF500 - Black | Back Painted glass |
| 4 Solar Panels | 9 Metal Louvered Doors | 14 Flat Metal Panel - Colour : Kronos (Black) | | |
| 5 Access Hatch | 10 Metal Louvers | 15 Glazed Single Door | | |

P07	18/04/24	Updated for planning	NM
P06	17/04/24	Updated for planning	NM
P05	01/03/24	Planning - RM Updated	NP
P04	24/11/23	Planning -RM Issue	NM
P03	17/11/23	Planning - RM First Issue	NP
P02	31/10/23	Planning - Reserved Matters Updated	NP
P01	17/10/23	Planning - Reserved Matters	NP

Revisions

Scale	Size	Date	Drawn	Checked
1:100	A1	17/11/2023	NP	NM

Client
Bicester Motion Limited

Project
BM_IQ

Reserved Matters

Title
Proposed Rear Elevations - Option 1&2

Purpose
For Information

Status Code
S2

3DReid
Architecture Interiors Masterplanning

Drawing No. **220127-3DR-XX-ZZ-DR-A-08105** Rev. **P07**

