

Technical Note 03

Project: 1006638

Date: November 2023

Bat Ground Level Tree Appraisal

1 Introduction

- 1.1.1 Aspect Ecology is advising Greystoke CB Ltd in respect of ecological issues relating to land located east of Junction 11 of the M40 motorway at Banbury, Oxfordshire, centered at OS grid reference SP 476 422 (hereafter referred to as the site).
- 1.1.2 The site is proposed for development to provide a new large scale logistics development.
- 1.1.3 The site contains a substantial number of trees, a number of which were previously noted to support features offering potential roosting opportunities for bats. Accordingly, in order to inform the proposed development, individual trees were subject to specific ground level inspection and appraisal in regard to current potential features during 2023, the results of which are set out below.

2 Methodology

- 2.1.1 The trees within the site were subject to specific survey work during March and September 2023 in order to identify any potential suitability for use by roosting bats in order to inform the proposed development.
- 2.1.2 Individual trees within the site were assessed for their suitability to support roosting bats based on the presence of features such as holes, cracks, splits or loose bark. Suitability for roosting bats was rated based on relevant guidance¹ as:
- Negligible;
 - Low;
 - Moderate; or
 - High.
- 2.2 Any potential roost features identified were inspected from ground level for any signs indicating possible use by bats, e.g. staining, scratch marks, bat droppings, etc.

2.3 Survey Results

- 2.3.1 A substantial number of semi-mature and mature trees are present within the site. The results of the tree inspection work undertaken at the site are illustrated on Plan 6638/BNG5 and a summary of the individual trees identified to support features offering potential for use by roosting bats is set out in Table 2.1 below.

¹ Collins, J. (ed.) (2016) 'Bat Surveys for Professional Ecologists: Good Practice Guidelines (3rd edn).' Bat Conservation Trust

Table 2.1. Tree inspection results.

Bat Tree No.	Species	Age	Potential Roost Features	Suitability	Arboricultural Survey Ref <i>(refer to Barton Hyett Associates Information)</i>
T1	Ash	Mature	Decayed side revealing heartwood, few shallow cracks	Low	T1
T2	Oak	Mature	Dense ivy cover, deadwood at the top, few crevices	Low	T2
T3	Ash	Dead	Lots of ivy cover	Low	T3
T4	Oak	Mature	Thick Ivy	Low	T4
T5	Ash	Mature	Missing top of tree, with large open hollow cavity and knotholes	Moderate	(H7)
T6	Oak	Mature	Crevices, deadwood, lifted bark	Moderate	T6
T7	Crack Willow	Mature	Crevices	Moderate	(G5)
T8	Ash	Mature	Shattered branches	Moderate	(G5)
T9	Ash	Semi-mature	Torn limb	Moderate	(G3)
T10	Ash	Semi-mature	Woodpecker hole	High	(G4)
T11	Ash	Mature	Dense Ivy	Low	(G4)
T12	Ash	Mature	Deadwood	Moderate	T8
T13	Oak	Mature with dieback	Loose bark, rot hole, split limb, cracks and crevices	Moderate	T13
T14	Oak	Veteran	Deadwood, partially exposed heartwood, deep crevices and cavities, ivy cover, dead limbs	High	T12
T15	Ash	Mature	Shallow knotholes	Moderate	(W1)
T16	Ash	Mature	Deep knothole	High	(G38)
T17	Oak	Veteran	Deadwood, Crevices	Moderate	T72
T18	Ash	Mature	Lost limb, knothole	High	T76
T19	Ash	Mature	Crevices, torn limb with potential hole	Low	T75
T20	Ash	Mature	Two woodpecker holes	High	T74
T21	Ash	Mature	Gap in bark behind damaged stem with space behind	Moderate	(G36)
T22	Ash	Mature	Two Woodpecker holes, crevices, lost bark, cavity	High	(G42)
T23	Ash	Mature	Knothole	Moderate	(G42)
T24	Oak	Mature	Ivy	Low	T14
T25	Oak	Veteran	Ivy	Low	T42
T26	Ash	Veteran	Ivy	Low	T43
T27	Ash	Mature	Woodpecker holes	High	(G23)
T28	Oak	Mature	Ivy	Low	(G23)
T29	Oak	Mature	Ivy	Low	(G23)
T30	Ash	Mature	Knothole, Splits, dead limbs	Moderate	T45
T31	Ash	Mature	Wound at base of trunk	Low	(H52)

Bat Tree No.	Species	Age	Potential Roost Features	Suitability	Arboricultural Survey Ref <i>(refer to Barton Hyett Associates Information)</i>
T32	Ash	Mature	Two large tear outs, cavity	High	T63
T33	Oak	Mature	Lifted bark, crevices, dead limbs, holes on north side	Moderate	T64
T34	Ash	Mature	Massive Woodpecker hole in dead wood, tear-outs	High	T67
T35	Ash	Mature	Missing limb, cavity, hole at base	High	(G32)
T36	Ash	Mature	Holes, crevices, torn out limb	Moderate	(G32)
T37	Unknown	Mature	Torn off limb, woodpecker hole	High	(G32)
T38	Ash	Young	Knothole into cavity	High	(G32)
T39	Oak	Mature	Torn out limbs, remnants of a woodpecker hole, cavity	Moderate	(G32)
T40	Hawthorn	Dead	Tear-out, dry cavity	High	(G31)
T41	Ash	Veteran	Minor lifted bark, large tree (former pollard)	Low	T32
T42	Ash	Mature	Big wound leading to upward facing cavity	High	T33
T43	Elder	Dead	Knotholes	Low	(G16)
T44	Ash	Mature	Hole at base with cavity	High	T32
T45	Crack Willow	Dying	Falling apart, crevices	Moderate	(G16)
T46	Ash	Mature	Dead limb, cavity	High	T36
T47	Oak	Veteran	Dead limbs, crevices	Moderate	T35
T48	Oak	Veteran	Tear outs and woodpecker hole into cavity	High	T50
T49	Oak	Mature	Ivy	Moderate	(G24)
T50	Ash	Dead	Cavity at base	Low	T37
T51	Crab Apple	Mature	Cavity going up the inside of the trunk	High	G15
T52	Ash	Veteran	Deadwood, Lifted Bark	Moderate	T26
T53	Ash	Mature	Tear-out wound, hollow trunk at base, open	Moderate - High	(G7)
T54	Oak	Mature	Knotholes, crack on trunk, large knothole enlarged by woodpecker	Moderate - High	(G7)
T55	Oak	Semi-mature	Deadwood, minor cracks	Low	T15
T56	Oak	Veteran	Dense Ivy cover	Low	T17
T57	Sycamore	Mature	Minor lifted bark	Low	(G10)
T58	Ash	Mature	Dead limbs, minor lifted bark	Low	(G10)
T59	Oak	Mature	Several dead limbs, deep crevices, lifted bark	Moderate	(G11)
T60	Oak	Mature	Small crevices, ivy	Low	(G11)
T61	Ash	Mature	Minor cracks, peeling bark	Low	T41
T62	Oak	Mature	Ivy and Crack	Low	(G12)
T63	Oak	Veteran	Ivy, knothole	Low	T20

Bat Tree No.	Species	Age	Potential Roost Features	Suitability	Arboricultural Survey Ref <i>(refer to Barton Hyett Associates Information)</i>
T64	Oak	Semi-mature	Split limb	Low	T22
T65 – T74	Ash	Mature	Line of mature trees with collapsed/damaged limbs, cracks, cavities and splits	Moderate - High	(G18 to G22)
T75	Elder	Mature	Minor cavity	Low-Moderate	T40
T76	Oak	Mature (Small/Collapsed)	Previously collapsed, with open heartwood, crevices and cavity	Moderate - High	T39
T77	Oak	Mature	Dense Ivy	Low	T23
T78	Willow	Mature	Partially collapsed, split/twisted limbs and bark, browsing damage	Moderate	(G13)
T79	Oak	Veteran	Large tree with minor damage noted.	Low	T19
T80	Ash	Mature	Dense Ivy	Low	T25
T81	Oak	Veteran	Dense Ivy	Low	T24

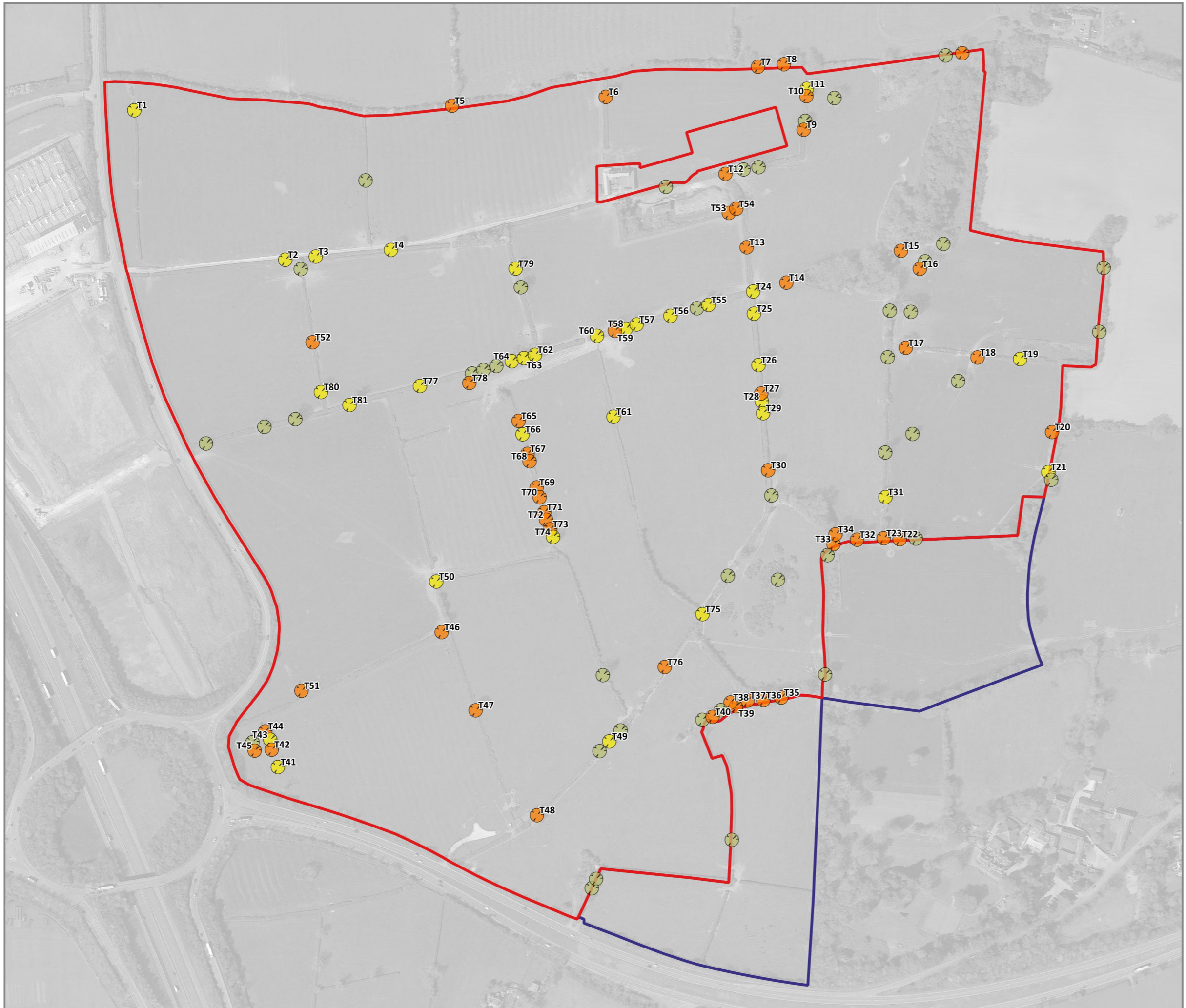
2.3.2 Overall, a total of 81 trees were identified to support features offering potential for use by roosting bats, of which 52 were recorded to offer moderate to high potential. No evidence for any use of the trees by bats was recorded during the ground level visual survey work.

2.3.3 The majority of trees are located within mature hedgerow corridors throughout the site and are formed by mature Oak and Ash, albeit a number of other species are present.

3 Summary and Conclusions

3.1.1 This report sets out the results of the specific ground level bat survey and appraisal of trees within the site, in order to establish the potential of individual trees to support roosting bats.

3.1.2 A total of 81 trees were recorded to support features offering potential suitability for use (of which 52 provided at least moderate potential). No evidence for the use of any of the trees by bats was recorded during the ground level inspection, albeit such use cannot be ruled out based on the level of survey work undertaken.



- Key:
- Site Boundary
 - Additional Land within Control of the Applicant
 - Tree with Negligible Bat Roosting Potential
 - Tree with Low Bat Roosting Potential
 - Tree with Moderate/High Bat Roosting Potential



Aspect Ecology Limited - West Court - Hardwick Business Park
 Noral Way - Banbury - Oxfordshire - OX16 2AF
 01295 279721 - info@aspect-ecology.com - www.aspect-ecology.com

Land South West of Huscote Farm &
 East of Daventry Road, Banbury
 Bat Tree Plan

PROJECT	6638/BNG5
TITLE	C/JP
DRAWING NO.	December 2023
REV	
DATE	



P:\Project\Aspect Ecology Projects\ECO 6600\1006638\Graphics\GIS\6638 - BNGA.apr

Copyright

The copyright of this document remains with Aspect Ecology. All rights reserved. The contents of this document therefore must not be copied or reproduced in whole or in part for any purpose without the written consent of Aspect Ecology.

Legal Guidance

The information set out within this report in no way constitutes a legal opinion on the relevant legislation (refer to the original legislation). The opinion of a legal professional should be sought if further advice is required.

Liability

This report has been prepared for the exclusive use of the commissioning client and unless otherwise agreed in writing by Aspect Ecology, no other party may use, or rely on the contents of the report. No liability is accepted by Aspect Ecology for any use of this report, other than for the purposes for which it was originally prepared and provided. No warranty, express or implied, is made as to the advice in this report.

ecology • landscape planning • arboriculture

aspect

Aspect Ecology Ltd
West Court
Hardwick Business Park
Noral Way
Banbury
Oxfordshire OX16 2AF

T: 01295 279721
E: info@aspect-ecology.com
W: www.aspect-ecology.com