

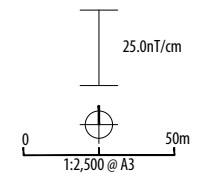
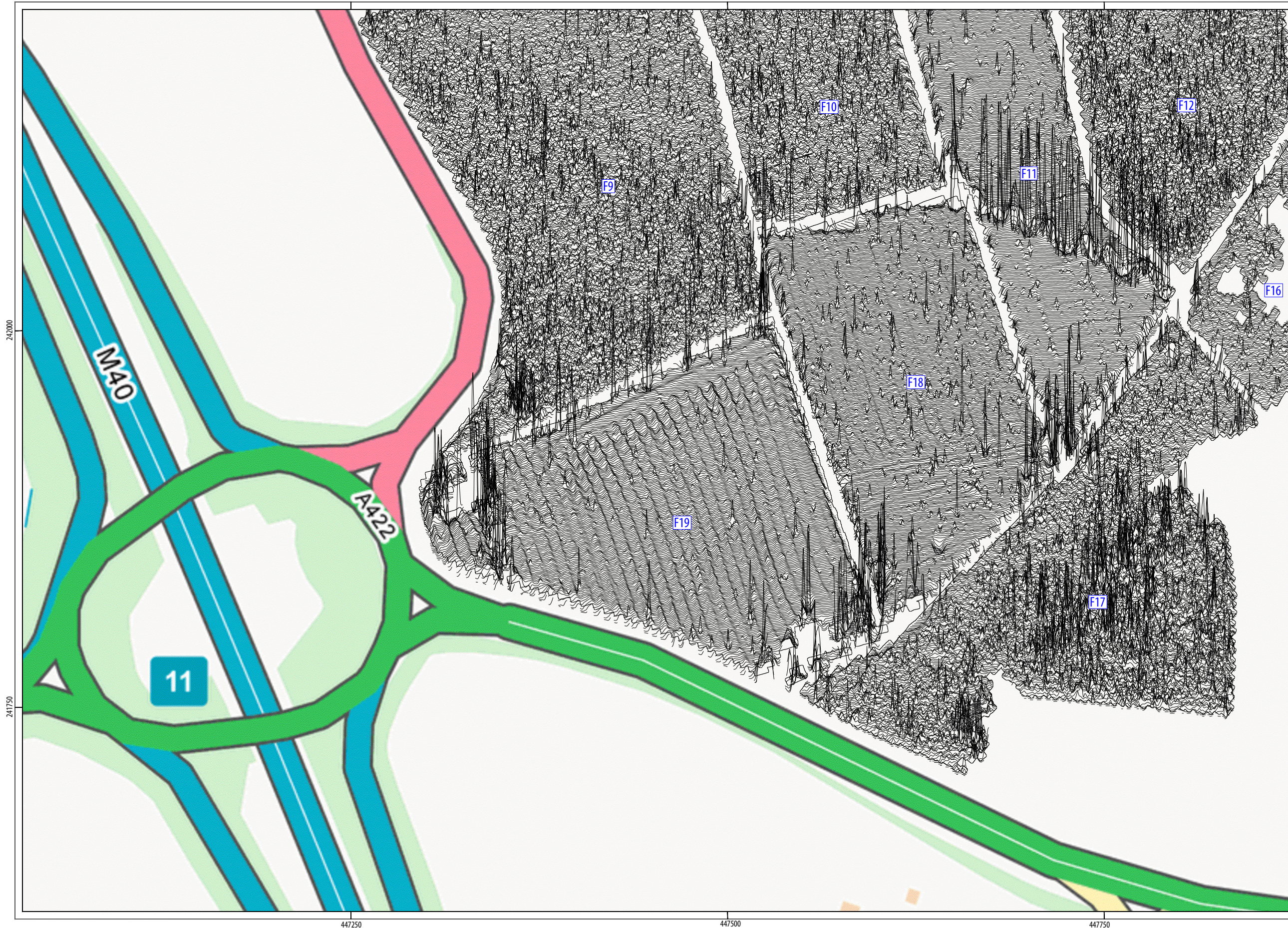
PROJECT LEBA22
 Land East of J11, M40
 Banbury
 Oxfordshire

CLIENT Greystoke CB

**HEADLAND
 ARCHAEOLOGY**

Headland Archaeology Yorkshire & North
 Units 23-25 | Acorn Business Centre | Balme Road
 Cleckheaton | BD19 4EZ
 t 0127 493 8019
 w www.headlandarchaeology.com

ILLUS 13 Processed greyscale magnetometer data; Sector 2



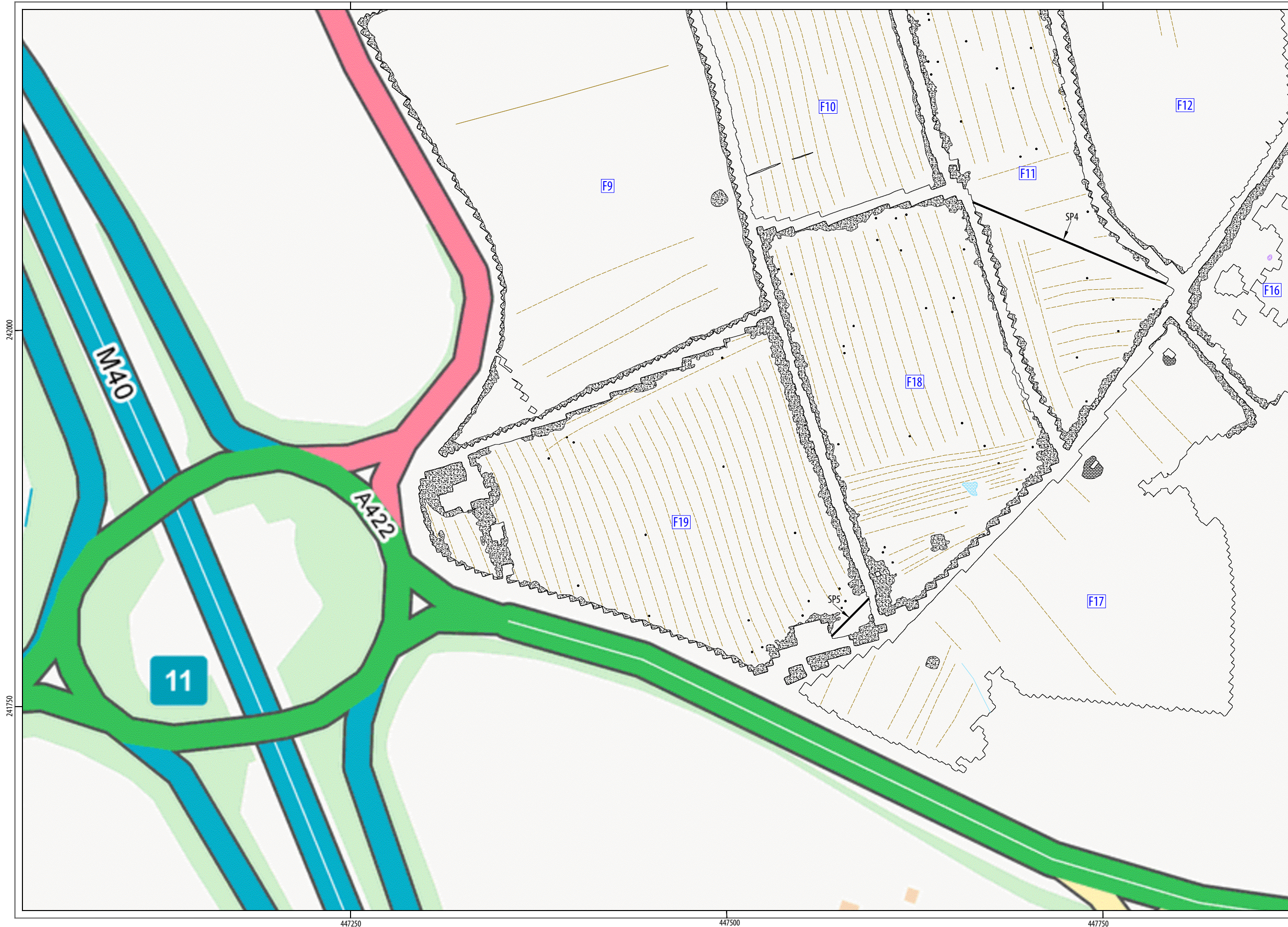
PROJECT LEBA22
 Land East of J11, M40
 Banbury
 Oxfordshire

CLIENT Greystoke CB



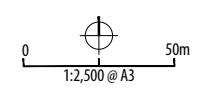
Headland Archaeology Yorkshire & North
 Units 23-25 | Acorn Business Centre | Balme Road
 Cleckheaton | BD19 4EZ
 t 01274 493 8019
 w www.headlandarchaeology.com

ILLUS 14 XY trace plot of processed magnetometer data; Sector 2



TYPE OF ANOMALY	INTERPRETATION
● dipolar isolated	ferrous material
● magnetic disturbance	ferrous material
— dipolar linear	service pipe
⊞ magnetic enhancement	uncertain
— linear trend	ridge and furrow
— linear trend	geological variation

ABBREVIATIONS
SP - service pipe



PROJECT LEBA22
Land East of J11, M40
Banbury
Oxfordshire

CLIENT Greystoke CB

**HEADLAND
ARCHAEOLOGY**

Headland Archaeology Yorkshire & North
Units 23-25 | Acorn Business Centre | Balme Road
Cleckheaton | BD19 4EZ
t 01274 493 8019
w www.headlandarchaeology.com

ILLUS 15 Interpretation of magnetometer data; Sector 2