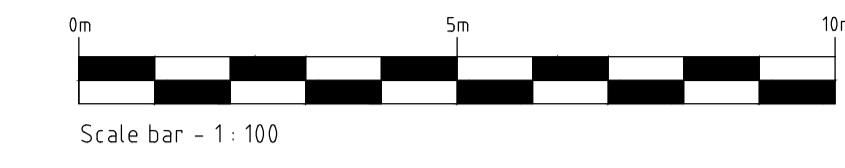
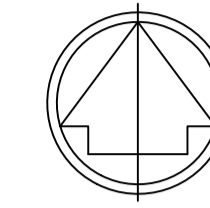


PROPOSED
1:100 @ A1 1:200 @ A3

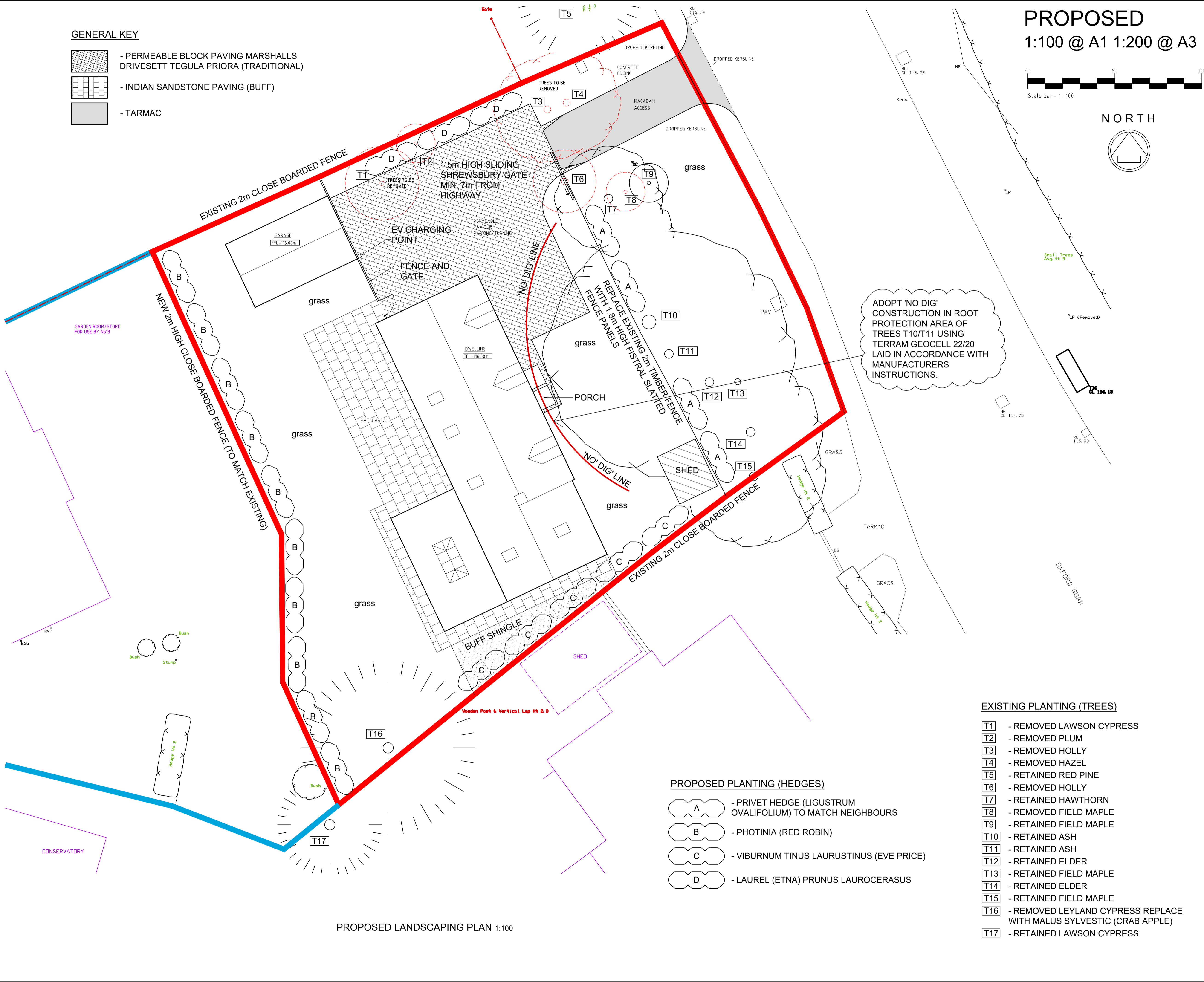


NORTH



GENERAL KEY

- PERMEABLE BLOCK PAVING MARSHALLS
DRIVESETT TEGULA PRIORA (TRADITIONAL)
- INDIAN SANDSTONE PAVING (BUFF)
- TARMAC



ADOPT 'NO DIG' CONSTRUCTION IN ROOT PROTECTION AREA OF TREES T10/T11 USING TERRAM GEOCELL 22/20 LAID IN ACCORDANCE WITH MANUFACTURERS INSTRUCTIONS.

PROPOSED PLANTING (HEDGES)

- PRIVET HEDGE (LIGUSTRUM OVALIFOLIUM) TO MATCH NEIGHBOURS
- PHOTINIA (RED ROBIN)
- VIBURNUM TINUS LAURUSTINUS (EVE PRICE)
- LAUREL (ETNA) PRUNUS LAUROCERASUS

EXISTING PLANTING (TREES)

- T1** - REMOVED LAWSON CYPRESS
- T2** - REMOVED PLUM
- T3** - REMOVED HOLLY
- T4** - REMOVED HAZEL
- T5** - RETAINED RED PINE
- T6** - REMOVED HOLLY
- T7** - RETAINED HAWTHORN
- T8** - REMOVED FIELD MAPLE
- T9** - RETAINED FIELD MAPLE
- T10** - RETAINED ASH
- T11** - RETAINED ASH
- T12** - RETAINED ELDER
- T13** - RETAINED FIELD MAPLE
- T14** - RETAINED ELDER
- T15** - RETAINED FIELD MAPLE
- T16** - REMOVED LEYLAND CYPRESS REPLACE WITH MALUS SYLVESTIC (CRAB APPLE)
- T17** - RETAINED LAWSON CYPRESS

PROPOSED LANDSCAPING PLAN 1:100

REV	DATE	BY	DESCRIPTION	CHK	APP
D	1.12.23	TB	GENERAL UPDATES AS CLIENTS COMMENTS	MW	MW
C	3.10.22	TB	EV CHARGING POINT AND DUCT ADDED	MW	MW
B	21.9.22	TB	FRONT FENCE, GATES AND HEDGE TO LINE THROUGH WITH EXISTING FENCE TO BE REMOVED	MW	MW
A	7.9.22	TB	MINOR UPDATES AS CLOUDED AND LINE OF REMOVED FENCE INDICATED	MW	MW

DRAWING STATUS: BUILDING REGULATIONS

WELLAN Ltd
Wellan House,
Aylesmore, Shipston-on-Stour,
Warwickshire.
CV36 5EJ
Tel: 01608 685753
Email: mail@wellan.co.uk
Website: www.wellan.co.uk

CLIENT: MR R JONES

PROJECT: LAND TO THE REAR OF 13 BLACKWOOD PLACE, BODICOTE

TITLE: PROPOSED LANDSCAPING PLAN AND BOUNDARY TREATMENTS

SCALE	DATE	DESIGN/DRAWN	CHECKED	APPROVED	SHT
1:100 @ A1	23.5.22	TB / TB			A1

JOB No. 21-146

DRAWING No. 06 REV. D