



Balmoral Avenue Phase 2

Banbury

Resident's Travel Information Pack

ISSUE 02 • February 2024

Produced by MEC



WELCOME

...to this Resident's Travel Information Pack, which has been prepared to help you take advantage of sustainable travel opportunities such as walking, cycling, public transport and car sharing in the area surrounding your new home, as well as identifying the various local facilities in the local area.

Oxfordshire County Council, Orbit Homes and MEC are all committed to the principles of sustainable development. By providing this Travel Pack, we hope to give you more choice about how you travel and assist in reducing the number of car journeys made, benefiting you, the wider community and the local environment.



CONTENTS

WELCOME	2
YOUR LOCATION	3
TRAVELLING ...ON FOOT	4
...BY BIKE	5
...BY BUS	6
...BY TRAIN	7
WHAT'S AROUND	8
CAR SHARING	9
HOMEWORKING	9
ECO DRIVING	9
RESOURCES	10



HOW TO USE THE TRAVEL PACK

We encourage you to read through this Travel Pack and explore ways to reduce your need to travel by car or even use a car more efficiently.

In this pack, you will find maps to help you walk/cycle to local facilities, information on local bus and rail services, tips for 'eco driving' and homeworking, amongst much more.

After reading this Travel Pack, the aim is to create a 'modal shift' from car-borne journeys towards sustainable modes of transport.

Should you require more information about any transport related matters, please contact your Travel Plan Coordinator by emailing: tpc@m-ec.co.uk



YOUR LOCATION

Balmoral Avenue Phase 2 is located in Cherwell Valley, Northern Oxfordshire, 3km west of the centre of the historic market town of Banbury.

Your new home is well connected for travel via the M40, A423 and the A423 and within proximity to surrounding towns such as Drayton, Chacombe, Bloxham and Adderbury.

The nearest convenience store is approximately 750m from the development at Bradley Arcade which also benefits from a post office and a children's nursery.

For sustainable transport, your nearest train station is Banbury, located around 3.3km from the development. A range of bus services can also be accessed off Bretch Hill, between Dover Avenue and Balmoral Avenue, a short walk of around 400m. The development benefits from Public Right of Way; route 120/24 extends along the site's northern boundary, routing in an east to west direction, providing western access to Bretch Hill and access to route 31/51. Route 120/24 also links to the south of the site which runs down the western boundary of the development providing access to Balmoral Avenue south.



EXPLORE THE GREAT OUTDOORS:

- Hastings Park and Chesterway Playground are located just 1km from the development. This park offers a lovely walk, playing fields and a children's play area.
- Fancy a little more? Banbury's well-loved 'People's Park' is around 2.2km from Balmoral Avenue, offering fantastic facilities for all; along with beautiful walks, there are tennis courts, community gardens, an aviary, a children's play area, a fitness zone, war memorial and a bowls green.
- Fancy a cycle? Banbury's largest park, 'Spiceball Country Park' is further at 2.9km from the development, providing beautiful green space, a children's play area, skate ramps, and picnic areas; it also benefits from the pleasant walks along the towpath and riverside as the canal and River Cherwell run through the park.
- Do you fancy your hand at sustainable living? Banbury Eastington Allotments are 2.2km away.
- Or simply make the most of the public open space located to the north east of Balmoral Avenue development.

TRAVELLING

The next few sections will be broken down into sustainable transport modes: starting with walking, followed by rail, bus and then cycling. A map on page 8 shows key facilities and amenities in the local area.

ON FOOT

Walking is a healthy, environmentally friendly and free way to travel that can form an integral part of your routine. National research undertaken by the Chartered Institution of Highways & Transportation suggests most people are able and are willing to walk approximately 1 kilometre (just over half a mile) to work or school, taking around 12 minutes on average to cover this distance. Longer distances of up to twice this are often practical for many pedestrians. Even a short 400m walk to a local shop or other facility typically takes only 5 minutes.

According to the Health Education Authority, *'walking briskly for half an hour a day can halve the risk of heart disease'*. This is equivalent to walking to and from a destination just over $\frac{3}{4}$ of a mile from your home instead of taking a car.



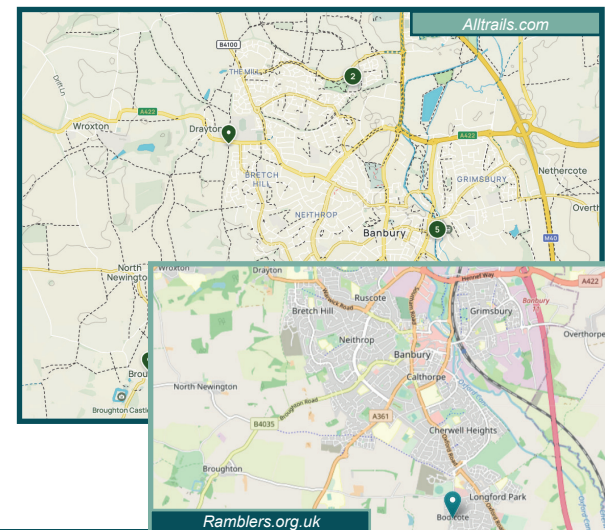
Balmoral Avenue Phase 2 is conveniently located to both amenities, schools and outdoor facilities, which can be accessed on foot. These are detailed on the map on page 8.

Walking is easily accessible in Banbury for your everyday needs, with most areas offering Public Footpaths, Bridleways and Byways. The development benefits from access to an existing Public Right of Way starting at the north-east boundary, travelling across to the north west, with access to the south of the development located along the western boundary of the development; this provides access to the other side of Balmoral Avenue which is located off Broughton Road. To plan your walking journey, there are a range of websites you can use. For local routes, google maps is recommended, which also acts as a navigation system to ensure you reach your destination with ease - www.google.co.uk/maps.

To help plan walking routes, you can use Ramblers, which provides an in-depth overview of your walking route, allowing you to select the difficulty, distance and surroundings. If you are interested in joining a local walking club, Ramblers also provides access to local walking

groups, with groups currently located within neighbouring Bodicote and Wroxton being the most convenient to Balmoral Avenue. Visit: www.ramblers.org.uk/go-walking/find-a-walk-or-route.aspx

For those looking for recreational walks, along with Ramblers, you can also utilise AllTrails, which provides an overview of curated trails in the local area; you can access these by visiting: www.alltrails.com/explore/england/oxfordshire/banbury



BY BIKE

CYCLING STATS

The DfT National Travel Survey (England) 2021 found that throughout England, approximately 4% of people commute to a place of work by bicycle. Around 55% of cycling stages were done for leisure (including shopping), with an average of 55 miles travelled per person per year.

CYCLING AVAILABILITY

Cycling offers many benefits to your health and the environment and is one of the best ways to get around town with versatility and a reasonable speed. Balmoral Avenue Phase 2 is located near Cycle Route 5, which is accessible to the south of the development off Broughton Road, approximately 2.7km (8 minutes) from home. Going south, Route 5 connects you to Oxford; via Bodicote, Bloxham, Woodstock, Wolvercote, North Oxford and Jericho. Travelling west, you can access Broughton, Sutton-under-Brailles, Willington and Shipston-on-Stour. Opportunities to travel along the residential streets around the development are also available.

Plan your cycle route by visiting:

www.cyclestreets.net
www.sustrans.org.uk/

CYCLING TRAINING

For young children, cycle training can be delivered through the Bikeability programme, which is available in local schools, though private tuition can be arranged.

Adults can also get cycle training through the Bikeability scheme. The courses are likely to have a cost associated with them.



Search for 'Banbury' at:
www.bikeability.org.uk/find-cycle-training

CYCLING TO WORK

If you do not have a bike but wish to cycle to work, then speak to your employer as various tax-incentive schemes are available to assist.

For more information visit: www.bike2workscheme.co.uk



HEALTH BENEFIT

The NHS state that someone who weighs 80kg (12st 9lb) will burn more than 650 calories with an hour's cycling.

CYCLE SHOPS AND SERVICING

The most accessible cycle shops to your location:

Banbury Cycles

56-58 Broad St, Banbury, OX16 5BL

Broadrribb Cycles Banbury

1 George St, Banbury, OX16 5BH - 01295 669065

NEW TO CYCLING?

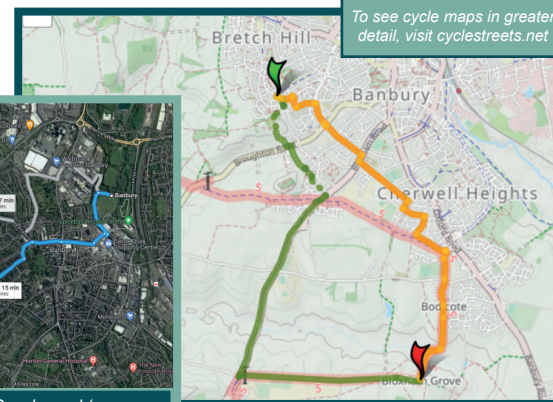
You can access advice and support to help begin your cycle journey, visit:

Cycling UK

<https://www.cyclinguk.org/advice-beginners>

CYCLING STORAGE

Your shed is designed to be able to secure up to two bicycles.



Google.co.uk/maps

BY BUS

The nearest bus stop to Balmoral Avenue Phase 2 is located along Bretch Hill, between Dover Avenue and Balmoral Avenue; this is approximately 400m from the development and comprises a flag and pole stop with timetable information.

There are approximately four buses per hour which make commuting to work, school, retail

or leisure facilities accessible. A summary of bus services from Bretch hill is further detailed in the table below, and the location of bus stops is included in the detailed map on page 8. Further bus routes are accessible from Banbury bus station, you can view timetables for these by visiting: <https://www.stagecoachbus.com/timetables>

BUS OFFERS AND SCHEMES

Oxfordshire County Council offer a travel pass for those who have reached the State Pension age or are disabled.

This offers free, or reduced travel on local bus services, you can find out more by visiting: <https://www.oxfordshire.gov.uk/residents/roads-and-transport/public-transport/bus-passes>

SERVICE	OPERATOR	ROUTE	OPERATING DAYS	OPERATIONAL HOURS	FREQUENCY
B5	Stagecoach	Bretch Hill to Banbury	Mon-Fri Sat Sun	05:28/23:18 06:31/23:18 07:36/19:16	Every 15 minutes Every 15-20 minutes Every 30 minutes

Please note, Monday - Saturday after 8pm, frequency changes to every 30 minutes until the last time detailed within the operational hours.

WHY USE PUBLIC TRANSPORT?

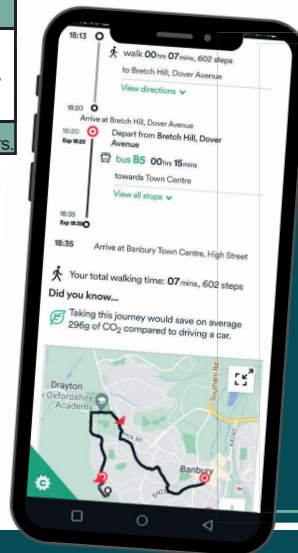
Relax on your journey  Work on your journey  Ease congestion  Save cost 

Public transportation contributes to both the economical and physical health of individuals, and also helps with the reduction of CO2.

BUY TICKETS

Along with traditional methods, now there are cashless ways to buy day tickets and single fares. Travelling by Stagecoach? You can purchase single fares, DayRider, Flexible, Group and Student tickets by visiting the Stagecoach website.

For tickets visit: <https://www.stagecoachbus.com/tickets/all-tickets>



ROUTE PLANNING

For route planning, timetables or for further information about bus travel, scan the QR code.

Travel Line

<https://www.traveline.info/>



Stagecoach

<https://www.stagecoachbus.com/>

BY TRAIN

Travelling by train is accessible from the nearest railway station, Banbury, approximately 3.3km from Balmoral Avenue Phase 2. Banbury station provides direct routes to Oxford, Birmingham Snow Hill, London Marylebone and Southampton Central.

Please note: currently, there is no charge for taking a bicycle on a train.

Banbury Station (BAN) is located off Bridge Street, OX16 5AB and managed by Chiltern Railways.

There are three car parks at the station: a multi-storey car park, the main car park and the Approach Road car park, offering a total of 978 spaces. All prices are currently the same across all car parks. There is a bike storage facility with room for 63 bicycles, and CCTV is operational around the station.



Scan here for more information, timetables and ticket purchasing. Alternatively, you can visit: <https://www.chilternrailways.co.uk/routes-and-destinations/banbury>

You can purchase tickets at the station online, or you can use a smartcard. Please note that Oyster cards are not currently accepted at this station.

The train station is accessible from Balmoral Avenue via several cycle routes ranging from approximately 3.3km – 3.8km taking around 13 minutes.

Banbury ticket office opening times

Mon to Fri: 05:45 - 20:15

Sat: 06:35 - 19:15

Sun: 08:10 - 17:40



Station Map is available to view by scanning the QR code, or visiting: <https://www.nationalrail.co.uk/stations/ban/details.html>

trainline

You can also plan your journey with trainline:
<https://www.thetrainline.com/>



Banbury train station
Source: Flickr

Destination (BUT)	Frequency	Cost*
To Oxford	Up to 4 per hr	£7.80
To Birmingham (Snow Hill)	Up to 3 per hr	£22.60
To London (Marylebone)	Up to 2 per hr	£37.00
To Southampton Central	Up to 1 per hr	£49.60

*Cost approximate based on Chiltern Railway single day tickets, Aug 2023. Prices vary.

**Chiltern
railways**



Station Facilities	BUT
Staffed Ticket Office	✓
Ticket Machine	✓
Shops/Cafes	✓
Telephone *Charge	✓
ATM	✓
Seated Areas	✓
Toilets (Platform 2)	✓
WiFi	✓
Step Free Access	✓
First Class Lounge	✗
Cycle Storage	✓
Carpark	✓
Bus Service	✓
Oyster Cards	✗



FACILITIES IN AND AROUND BANBURY

Retail:
 Londis
 Bradley Arcade Post Office
 Co-operative Food
 Aldi
 Nisa Local

Healthcare:
 Windrush Surgery
 Peak Pharmacy

Sports/Leisure:
 Woodgreen Leisure Centre
 Banbury Open Air Pool

Train Stations:
 Banbury

Education:
 St Joseph's R C Primary
 Wykham Park Academy
 Queensway Primary School
 Orchards Field Primary
 The Sunshine Centre Nursery
 Frank Wise School

Cycle and Outdoor:
 Hastings Park
 Playground Chester Way
 Peoples Park
 Banbury Eastington Allotments

Bus Stops
**Available to view on the digital map*

View this map digitally

WHAT'S AROUND?

This map highlights many local amenities around Hastings Park:

Leisure Facilities:

- Woodgreen Leisure Centre 1.5km
- Walk 19 mins | Cycle 8 mins

Train Station:

- Banbury station 3.3km
- Walk 41 mins | Cycle 15 mins

Retail Facilities:

- Londis 750m
- Walk 9 mins | Cycle 3 mins

Education Facilities:

- St Joseph's R C Primary 800m
- Walk 9 mins | Cycle 4 mins
- Wykham Park Academy 2.6km
- Walk 31 mins | Cycle 11 mins

Surrounded by the rolling countryside and just a short distance from the Cotswolds, an Area of Outstanding Natural Beauty, Banbury is the perfect location to get outdoors.

With an excellent range of outdoor facilities surrounding Balmoral Avenue Phase 2, you can be sure to enjoy beautiful walks and adventures without having to go too far from home. Leave the car at home and go and explore the great outdoors surrounding your beautiful new home.



CAR SHARING

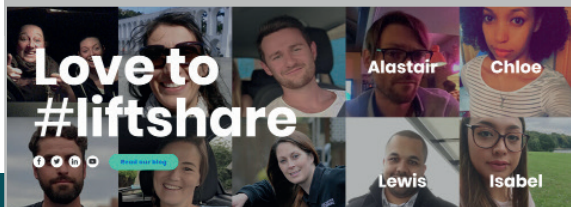
Car sharing involves two (or more) people sharing a car to travel between similar locations, instead of taking separate cars.

You can calculate how much you spend on motoring and how much you could save car sharing by using the excel spreadsheet from Cutting Your Car Use at: <http://www.cuttingyourcaruse.co.uk/costs.htm>

This can reduce congestion, pollution and parking problems, as well as saving the car sharers both time and money. According to *LiftShare*, the average saving equates to over £900 per year. Use the online calculator to work out how much you could save.

liftshare.com is trusted and actively supported by over 700 corporate communities. It takes less than 10 minutes to create an account and start searching for car sharing opportunities near you.

For more information and to read some success stories, visit liftshare.com/uk/community/leicestershare or search #liftshare on social media



TOP TIPS FOR CAR SHARING:

- Always confirm the time, date and price of your car share journey before the actual journey takes place
- Exchange contact details with your car share – it makes life much simpler if you can give them a call to check or rearrange any details
- If you are the car sharing driver, you should check with your insurance company that you are covered to carry passengers
- Don't be late: if you're car sharing it's important to be on time, as it's not just yourself but potentially three or four other people that you will be holding back
- Keep an open mind: some people like to chat, some prefer to commute quietly (be prepared to make small talk or to listen to the radio)

Source: nidirect.gov.uk

WORKING FROM HOME

Home working has increased significantly over the past few years. According to studies from the Office of National Statistics, May 2022, 14% of workers are now fully remote, with 24% working on a hybrid basis. Working from home has many benefits, including; increased productivity time due to the lack of commute, being environmentally-friendly, a better work/home balance supporting motivation, cost savings of travel, parking and vehicle wear.

ELECTRIC VEHICLES

For electric car journeys, use Zap-Map.com and find over 30,000 public UK charging ports and plan your electric car journey. Selected network participants also allow you to pay for your usage via their app.

ECO DRIVING

The principle of Eco Driving is to travel the required distance utilising the least amount possible, with an increased focus on minimising wear-and-tear to your vehicle. Search *eco driving* at *aa.com* for more information and support to get the most out of your driving.



BANBURY RVS GOOD NEIGHBOUR SCHEME

The Good Neighbour Scheme, operating in Banbury, offers transport to essential appointments from your home and back from DBS covered and trained individuals.

Booking - 01295 264214

LOCAL TAXIS AND CAR HIRE

- Banbury Taxis - 01295 263838
- Royal Cars Banbury - 01295 255 555
- Enterprise car and van hire - 01295 277553

Locations and further details of the above companies are available within the digital map on page 8 - Scan the QR code.

NATIONAL AND LOCAL EVENTS



Love to Ride UK
Competition-based cycle to work scheme with prizes to be won.
lovetoride.net



#CW5000 Challenge
Octobers Cycling Weekly challenge
cyclingweekly.com



National Walking Month
Encouraging walking to school/walk for the month of May.
livingstreets.org.uk



Banbury Town Council
Calendar of Events
https://www.banbury.gov.uk/Events_16390.aspx



National Bike Week
Yearly encouraging cycling to work for a week in June.
<https://www.cyclinguk.org/bikeweek>

COMMUNITY TRANSPORT SCHEMES:

Check out additional community transport schemes across Oxfordshire via the link below:
<https://www.oxfordshire.gov.uk/residents/roads-and-transport/public-transport/accessible-transport/community-transport>

HOME DELIVERY SERVICES

Home delivery services are considered a more environmentally-friendly option for grocery shopping, which will become more sustainable as companies are starting to trial

the use of electric only vehicles. Ocado co-founder, Jonathan Faiman said: "Each Ocado van replaces up to 20 cars on the road, which overall can result in huge savings of unnecessary

car journeys." Green deliveries are also available from many stores, which enables customers to book a delivery slot when a van is already allocated in that area.



Sainsbury's
sainsburys.co.uk



Tesco
tesco.com



ASDA
Asda
asda.com



Morrisons
morrison.com

FURTHER INFORMATION

In addition to your Travel Plan Coordinator (see page 2), the following links may be useful in finding out more about sustainable transport within your local area.



Department for Transport

Department for Transport

Free government leaflets and advice on driving and transport
dft.gov.uk



OXFORDSHIRE COUNTY COUNCIL

Oxfordshire County Council

Your Local Council and Local Highway Authority
<https://www.oxfordshire.gov.uk/>



ZapMap

Locate UK charging ports for electric vehicles
www.zap-map.com



Sustrans
A UK charity, known for the National Cycle Network
sustrans.org



Route planner
Bus, Tram and light rail route planner.
<https://www.traveline.info/>

Thank you for taking the time to read your...

Resident's Travel Information Pack

Prepared by:



© Copyright MEC Consulting Group All rights reserved.

This document relies on third party information, with sources acknowledged throughout. MEC and Orbit Homes accept no responsibility for the accuracy of this information, nor for subsequent changes following the publication of this document.

MEC and Orbit Homes accept no responsibility for:

The consequence of this document being used for any purpose or project other than that for which it was commissioned.

The issue of this document to any third party with whom approval for use has not been agreed.

Distance and journey times from your home may vary. Distance and journey times within this document are approximate, based on a central destination on Phase 2 Balmoral Avenue. Please refer to the resources provided to determine your journey time and distance.

All information included is correct at time of production (February 2024)

