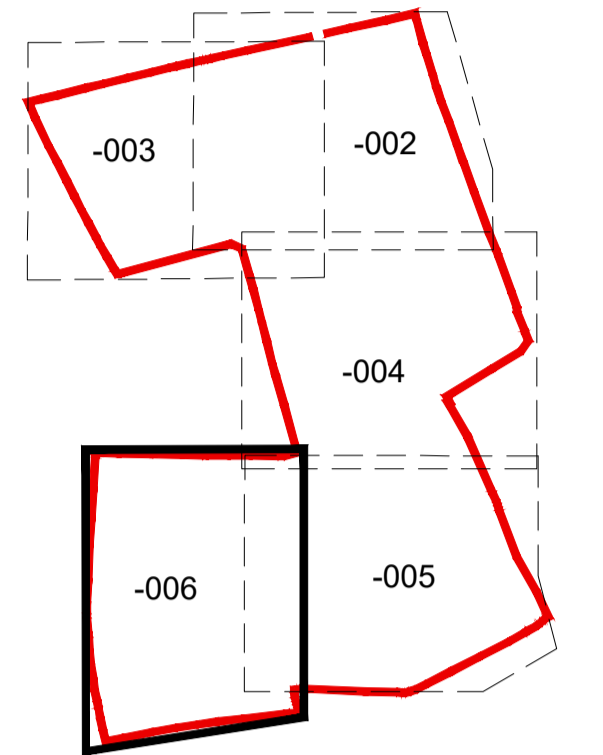


THIS DRAWING IS TO BE READ IN CONJUNCTION WITH SEPARATE GROUP / SITE SPECIFIC CONSTRUCTION NOTES AND MATERIALS SPECIFICATION.

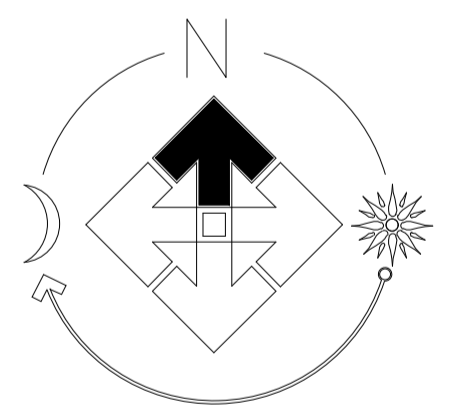
DRAWING NOTES
All tree and shrub locations and species must be taken into consideration by the project Structural Engineer to ensure that foundation design accords with the specifications set out in Chapter 4 of the AHBC Standards. The Landscape Contractor must ensure that plant material is planted in the locations shown and with NO SUBSTITUTIONS made without consulting the Group Landscape Design Department. It is the Landscape Contractor's responsibility to ensure that all underground services have been located and identified in advance of tree pit excavation so that no services are damaged or compromised by tree planting. Any changes to tree positions, species or specifications must be approved by the Group Landscape Design Department. Underground service strips are to be kept free of all plant material. Contractors must comply with all Health and Safety regulations and be aware of project/site specific information including referring to the information set out in the CDM drawings.

SHEET LAYOUT LOCATION PLAN
NOT TO SCALE



LEGEND

- EXISTING TREES/HEDGES
With Root Protection Area To be retained
- PROPOSED TREES
Extra Heavy Standard See Schedule
- ORNAMENTAL HEDGE
See Schedule
- NATIVE HEDGE
See Schedule
- PROPOSED PLANTING
Shrubs/Herbaceous/Grasses See Schedule
- TURF
with area (m²)
- AMENITY GRASS AREAS
Meadow Turfgrass Mixture
Emergate EG22 sown at 25g/m²
Kept mown short to 40mm
- WILDFLOWER MEADOW
Special General Purpose Meadow Mixture
Emergate EM3 sown at 4 g/m²
Sowing grassland to be retained and managed where
remediation is required (see as above)
- SEASONAL WETLANDS
Meadow Mixture for Seasonally Wet soils
Emergate EM8 sown at 4 g/m²
- NATIVE WOODLAND MIX
See Schedule
- NATIVE SCRUB MIX
See Schedule
- MARGINAL MIX
See Schedule
- GRAVEL
40mm of Stone over Membrane
- ARTWORK
To Be Agreed



PLOT NUMBER SHEET REF.
SHEET 002 (481-570,574-579)
SHEET 004 (571-573,580-647,726-728)
SHEET 005 (648-725,729-730)

FOR SPECIFICATION, PLANTING DETAILS & SCHEDULE SEE DRAWING WE102-LS-007

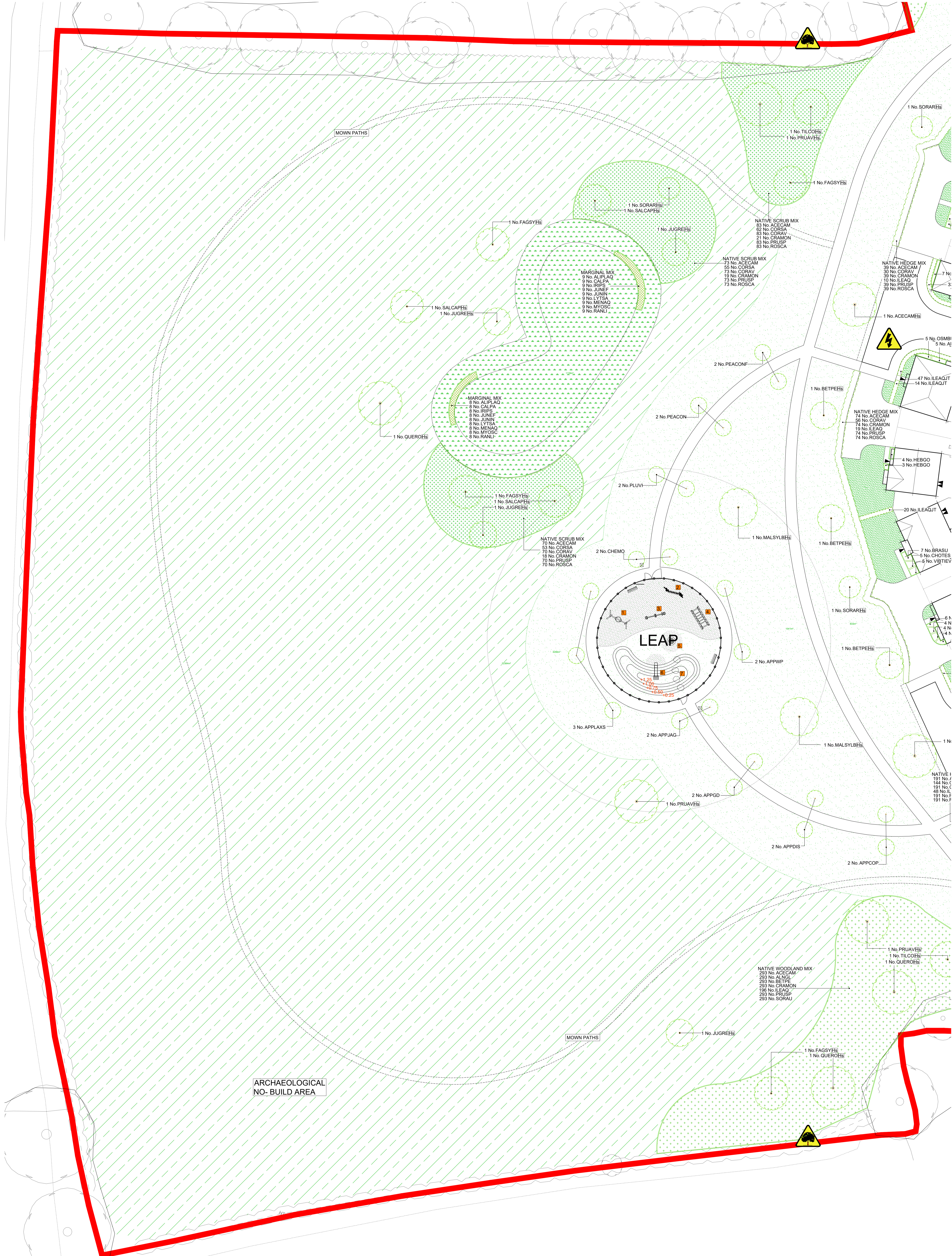
| Revision | Date |
|----------|----------|
| a | 15/09/23 |
| b | 13/09/23 |
| c | 08/11/23 |

| | |
|----------|--------------------------|
| Job: | Withycombe Farm, Banbury |
| Title: | Site Landscaping |
| Scale: | 1:250 @A0 |
| Date: | July 2023 |
| Drawn: | LP |
| Checked: | PmJ |

THIS DRAWING AND THE BUILDING WORKS DEPICTED ARE THE COPYRIGHT OF BLOOR HOMES (SERVICES) LIMITED. NO LIABILITY WILL BE ACCEPTED FOR REPRODUCTION OR MISUSE WITHOUT THE WRITTEN PERMISSION OF BLOOR HOMES (SERVICES) LIMITED.

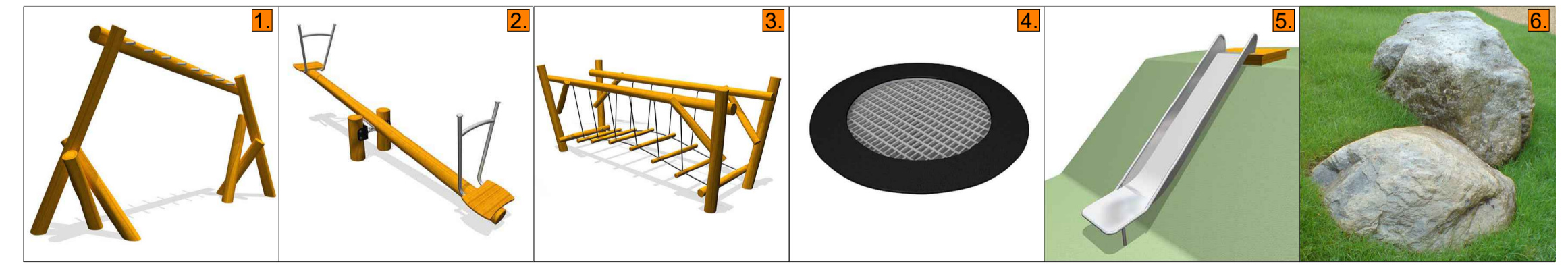


Drawing No. WE102-LS-006c



LEGEND - LEAP

- 1 BIRDS NEST SWING
As Supplied by Miracle Design & Play Ref. MB00012 Or similar approved
- 2 MONKEY BARS
As Supplied by Miracle Design & Play Ref. MB05921 Or similar approved
- 3 STANDING SEE SAW
As Supplied by Miracle Design & Play Ref. MB00005 Or similar approved
- 4 CLATTER BRIDGE
As Supplied by Miracle Design & Play Ref. MB05921 Or similar approved
- 5 TRAMPOLINE
As Supplied by Miracle Design & Play Ref. MB00227 Or similar approved
- 6 HILL SLIDE
As Supplied by Miracle Design & Play Ref. MB00227 Or similar approved
- 7 FEATURE BOULDERS x4
Caledonian Glacial Boulders Mixture of Sizes, Well-rounded Partly Embedded in the Soil
- GRASS MOUNDS
Each Contour represents 100mm. 1.25m Total Height above Ground Level.
- POST AND RAIL FENCE
1.2m High Regional Specification
- SELF-CLOSING GATES
x1 1.2m High Double Pedestrian & Vehicle Gates x1 1.2m High Single Gate As Supplied by Wicksteed Playgrounds Ltd Ref. NFLGATE12 & NFLPVGATE12 Or Similar Approved
- GRASS MATTING
As Supplied by Technix Ltd 1.3x1m Grass Mats Pegged into Place & Tied Together with Cable Ties Or Similar Approved
- FURNITURE
As Supplied by Broxap Ltd x2 Ashburns Steel Perf. BX 720 x2 Derby Standard Litter Bin Ref. BX45 2550-S Or similar approved
- SIGNAGE
Ownership/Usage Exact Wordings to be Agreed with the Local Planning Authority



LEAP INSTALLATION NOTES
Play provision should be in accordance with the layout proposed. Individual elements within the layout are to be designed and implemented by a reputable natural play provision company registered and approved by ROSPA, CHAS or equivalent. All component materials and structures are to meet current safety standards and are to be subject to a suitable balanced risk assessment, guided by EN1176 and EN1177, at the design stage and at the pre and post installation stages. The play provider should also produce an ongoing maintenance plan for the play area. The play area is to be inspected and approved by a qualified play inspector prior to being opened for use.

Contractors must comply with all Health and Safety regulations and be aware of project/site specific information including referring to the information set out in the CDM drawings.

CDM LEGEND

| Symbol | Brief description of risk. |
|--------|--|
| | Caution overhead / underground services. |
| | Trees have protection order in place, guarding required. |

NOTES:
Principal contractor to ensure all health and safety procedures are being correctly followed in relation to all temporary works.

WITHYCOMBE FARM, BANBURY