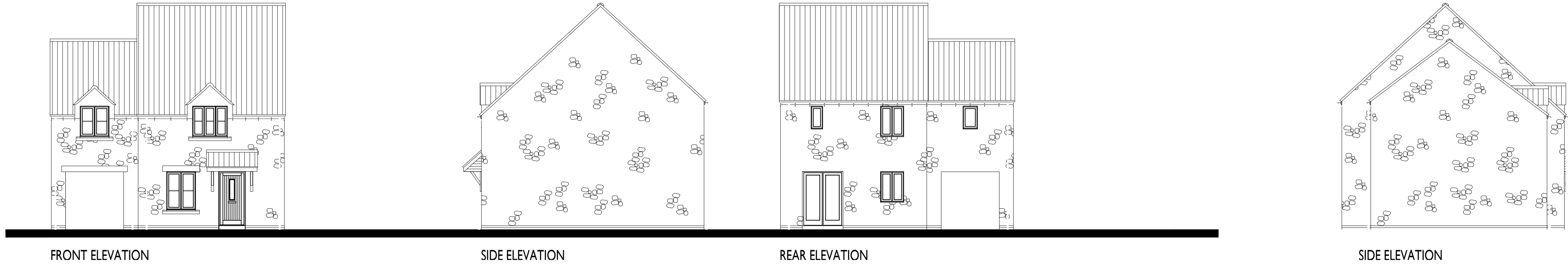


House type 'Hampton'  
Plt 32 As, Plt 31 Opp

REM approved



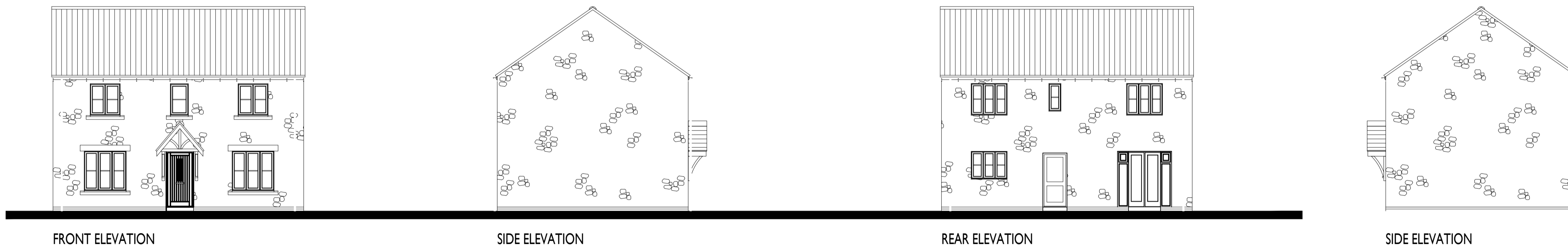
Technical design stage adjustment



Notes:  
- rear elevation windows / door enlarged after Part O audit.  
- central ridge line higher to for gable buildability after switch to timber frame construction.

House type 'Neston'  
Plt 26

REM approved



Technical design stage adjustment



Notes:  
- 1st floor front windows enlarged to reflect wider windows on approved floor plan



PLANNING

REV	DESCRIPTION	DATE	AUTH	CHKD

Project  
**Land at Tappers Farm  
Oxford Road, Bodicote**

Drawing Title  
**Elevations compared:  
REM approved and  
Tech design proposals**

Date <b>28.09.23</b>	Status <b>Planning</b>
Scale <b>1:100 @ A1</b>	Drawn by <b>CAB</b>
Project No. <b>22-029</b>	Checked by <b>-</b>
	Drawing No. Revision <b>P/HN/200 / -</b>