

House type 'H1009' a.k.a. Enstone
Plt 9-10, 27-28



REM approved

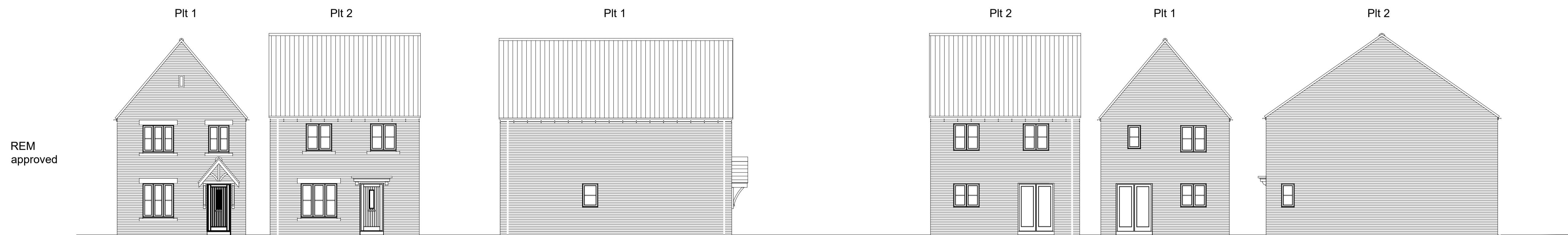
Notes:
- house types were presented as detached units in the REM approved house type booklet elevations.



Technical design stage adjustment

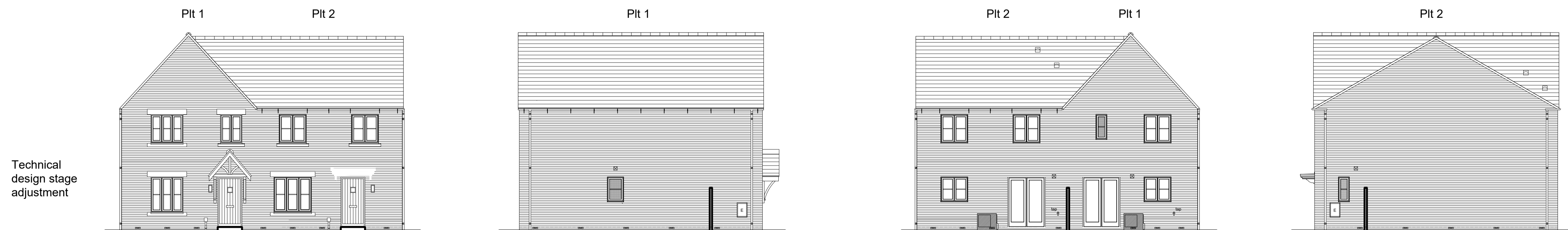
Notes:
- gable window to be omitted on Plt 9 only, to avoid facing shared footpath

House types 'H1009' a.k.a. Enstone and 'H1194' a.k.a. 4B-EXT
Plt 1-2



REM approved

Notes:
- house types were presented as detached units in the REM approved house type booklet elevations.



Technical design stage adjustment

Notes:
- Plt 1 roof pitch reduced from 50° to 47.5° to reflect Plt 3/4 roof pitch.
- Plt 2 roof pitch reduced from 35° to 30° to enable ridge to tuck under Plt 1 ridge.



This drawing is the copyright of GreenSquareAccord ©. All rights reserved.

scalebar 1:100 @ A1
0 5m

E: design.team@greensquareaccord.co.uk T: 0300 111 7000

PLANNING

REV	DESCRIPTION	DATE	AUTH	CHKD
-----	-------------	------	------	------

Project
**Land at Tappers Farm
Oxford Road, Bodicote**
Drawing Title
**Elevations compared:
REM approved and
Tech design proposals**

Date	28.09.23	Status	Planning
Scale	1:100 @ A1	Drawn by	CAB
Project No.	22-029	Checked by	-
		Drawing No.	P/H1009/200 / -
		Revision	