

House type 'Bodicote' a.k.a. 5B-G
Plt 22

REM approved



Technical design stage adjustment



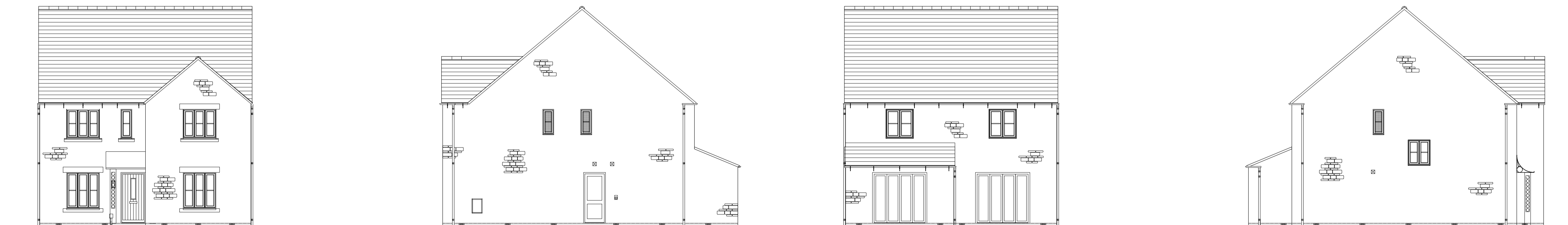
Notes:
- building reduced from 2.5 to 2 storeys
- roof pitch reduced from 42° to 40° for better aesthetic in relation to building mass
- rear lean-to roof pitch reduced to enable 1200h window 'A' above for fire escape
- attic window 'B' moved down to serve stair half-landing

House type 'Bodicote' a.k.a. 5B-G
Plt 41

REM approved



Technical design stage adjustment



Notes:
- same as Plt 22



This drawing is the copyright of GreenSquareAccord ©. All rights reserved.

scalebar 1:100 @ A1
0 5m

E: design.team@greensquareaccord.co.uk T: 0300 111 7000

PLANNING

REV	DESCRIPTION	DATE	AUTH	CHKD

Project
**Land at Tappers Farm
Oxford Road, Bodicote**

Drawing Title
**Elevations compared:
REM approved and
Tech design proposals**

Date	28.09.23
Scale	1:100 @ A1
Project No.	22-029

Status	Planning
Drawn by	CAB
Checked by	-
Project No.	22-029
Drawing No.	P/BD/200 / -
Revision	-