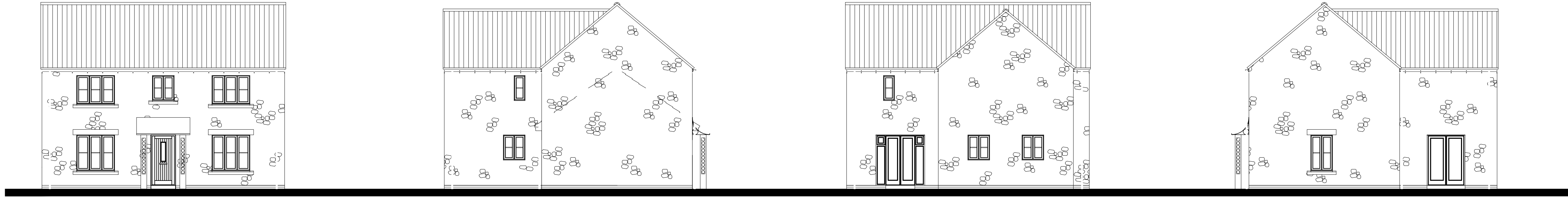
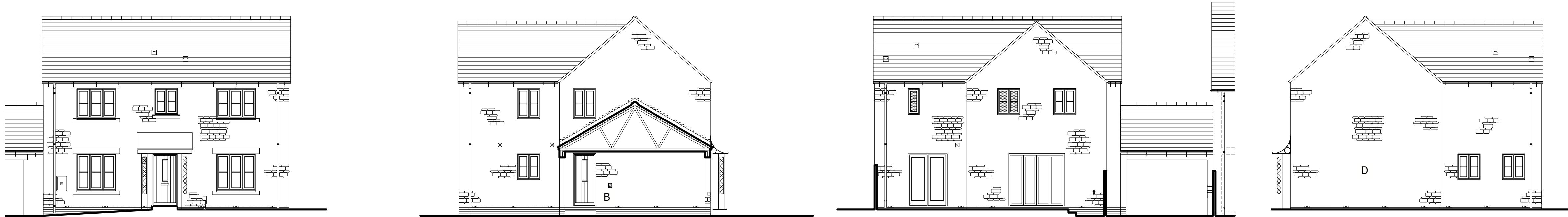


House type 'Woodcote'
Plt 33

REM approved



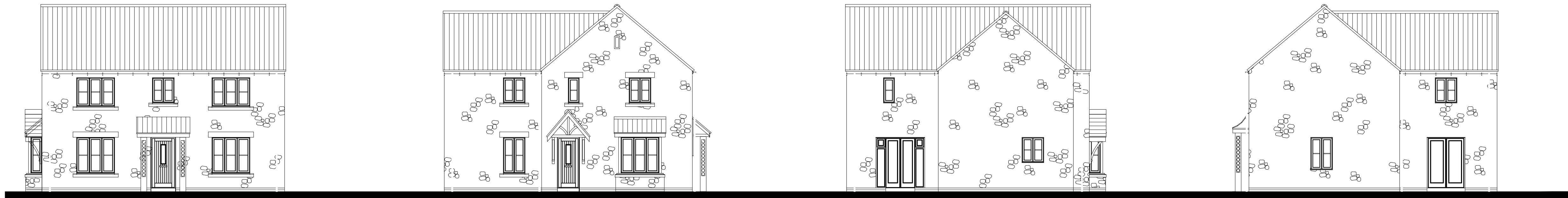
Technical design stage adjustment



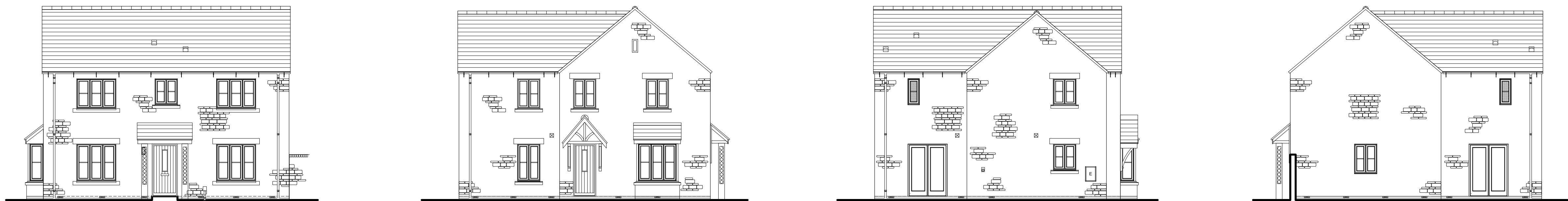
Notes:
- Utility door 'B' added for amenity
- window 'D' omitted because it would face the adjoining neighbour's parking
- other windows added/omitted/enlarged to reflect Part O audit, standard layout adjustments and enable fire escape

House type 'Woodcote'
Plt 34

REM approved



Technical design stage adjustment



Notes:
- windows added/omitted/enlarged to reflect Part O audit, standard layout adjustments and enable fire escape



This drawing is the copyright of GreenSquareAccord ©. All rights reserved.

scalebar 1:100 @ A1
0 5m

E: design.team@greensquareaccord.co.uk T: 0300 111 7000

PLANNING

REV	DESCRIPTION	DATE	AUTH	CHKD
-----	-------------	------	------	------

Project
**Land at Tappers Farm
Oxford Road, Bodicote**

Drawing Title
**Elevations compared:
REM approved and
Tech design proposals**

Date
28.09.23

Scale
1:100 @ A1

Project No.
22-029

Status
Planning

Drawn by
CAB

Checked by
-

Drawing No. Revision

P/WC/201 / -