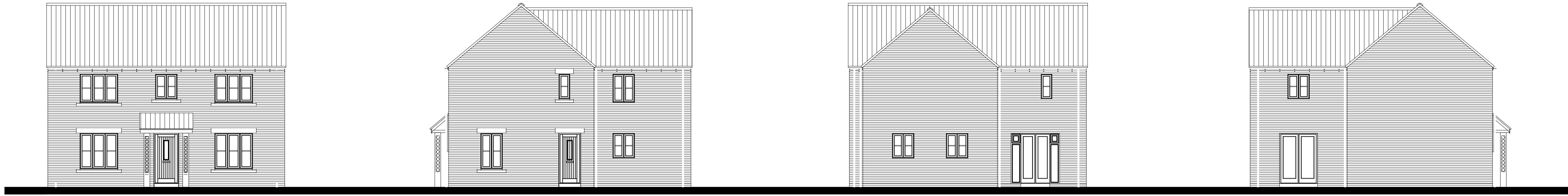
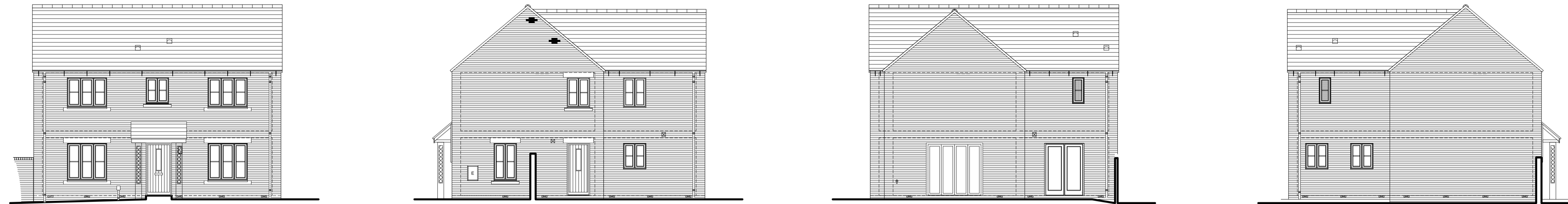


House type 'Woodcote'  
Plt 19

REM approved



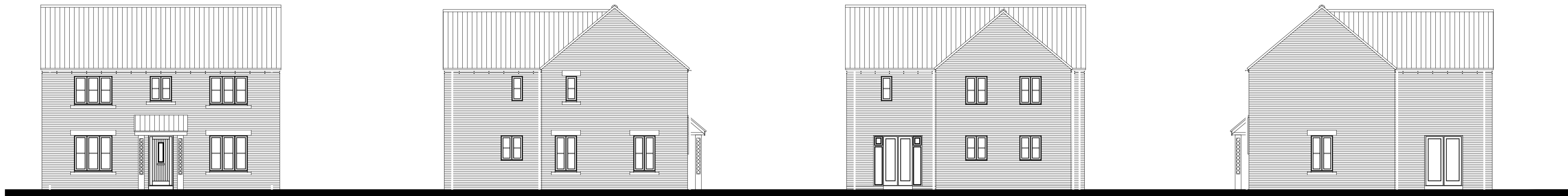
Technical design stage adjustment



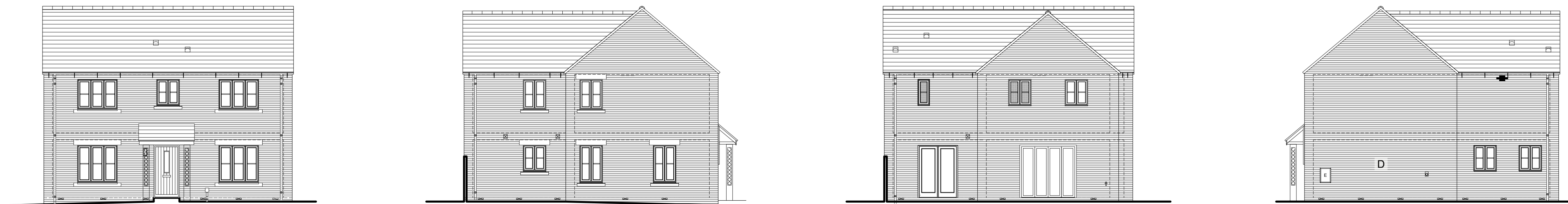
Notes:  
- some windows added/omitted/enlarged to reflect Part O audit, standard layout adjustments and enable fire escape

House type 'Woodcote'  
Plt 21

REM approved



Technical design stage adjustment



Notes:  
- window 'D' omitted because it would face the adjoining parking  
- other windows added/omitted/enlarged to reflect Part O audit, standard layout adjustments and enable fire escape



This drawing is the copyright of GreenSquareAccord ©. All rights reserved.

scalebar 1:100 @ A1  
0 5m

E: design.team@greensquareaccord.co.uk T: 0300 111 7000

PLANNING

REV	DESCRIPTION	DATE	AUTH	CHKD

Project  
**Land at Tappers Farm  
Oxford Road, Bodicote**

Drawing Title  
**Elevations compared:  
REM approved and  
Tech design proposals**

Date	<b>28.09.23</b>
Scale	<b>1:100 @ A1</b>
Project No.	<b>22-029</b>

Status	<b>Planning</b>
Drawn by	<b>CAB</b>
Checked by	<b>-</b>
Drawing No.	<b>P/WC/200 / -</b>
Revision	<b>-</b>