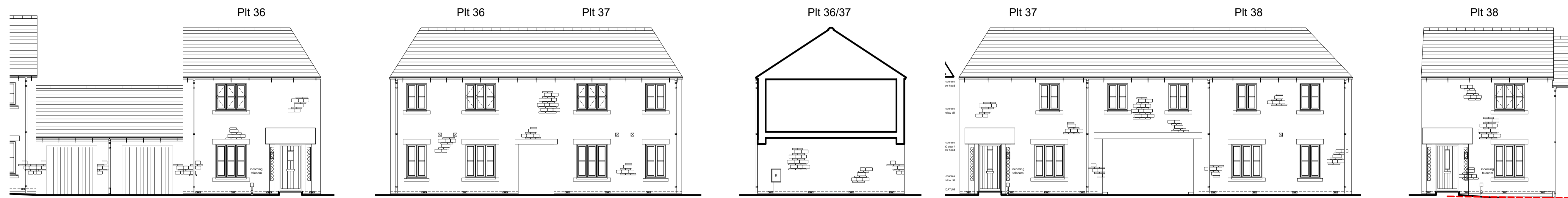


House types 'Kenilworth' a.k.a. 3Bsp5, 'Newton' a.k.a. 3Bsp4 and 'Wolverley' a.k.a. 3Bsp3
Plt 36-38 front elevations

REM approved



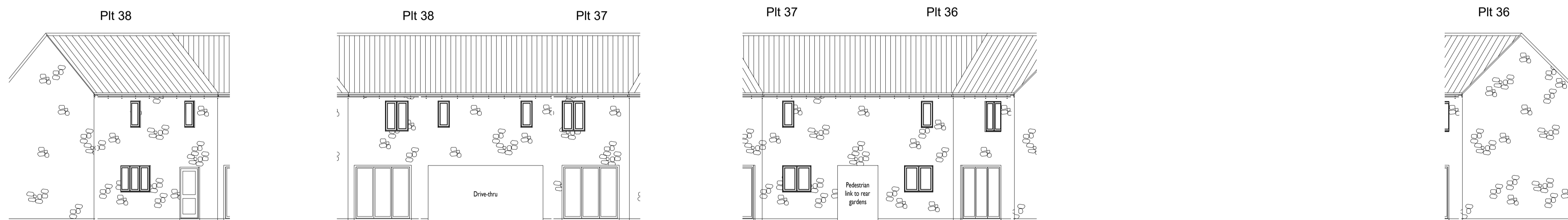
Technical design stage adjustment



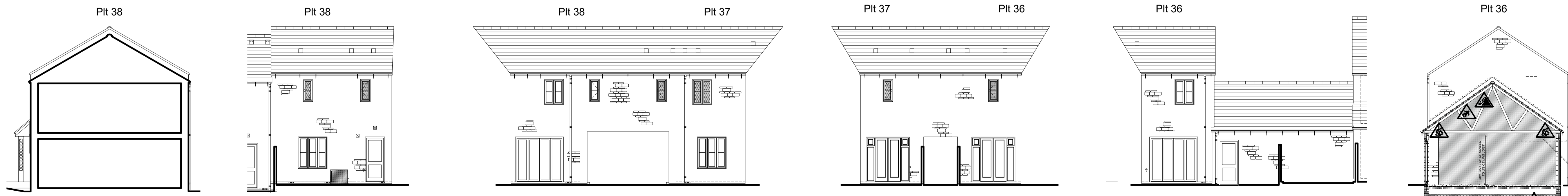
Notes:
- no change
- adjoining building / garage shown for completeness

House types 'Kenilworth' a.k.a. 3Bsp5, 'Newton' a.k.a. 3Bsp4 and 'Wolverley' a.k.a. 3Bsp3
Plt 36-38 rear elevations

REM approved



Technical design stage adjustment



Notes:
- some ground floor rear windows and doors adjusted to suit internal layout edits. These are screened by boundary fences.
- adjoining building / garage shown for completeness



This drawing is the copyright of GreenSquareAccord ©. All rights reserved.

scalebar 1:100 @ A1
0 5m

E: design.team@greensquareaccord.co.uk T: 0300 111 7000

PLANNING

REV	DESCRIPTION	DATE	AUTH	CHK'D

Project
**Land at Tappers Farm
Oxford Road, Bodicote**
Drawing Title
**Elevations compared:
REM approved and
Tech design proposals**

Date 28.09.23	Status Planning
Scale 1:100 @ A1	Checked by CAB
Project No. 22-029	Drawing No. Revision P/KW/200/ -