

House type 'Kineton' a.k.a. 4Bsp1
Plt 44

REM approved



Technical design stage adjustment



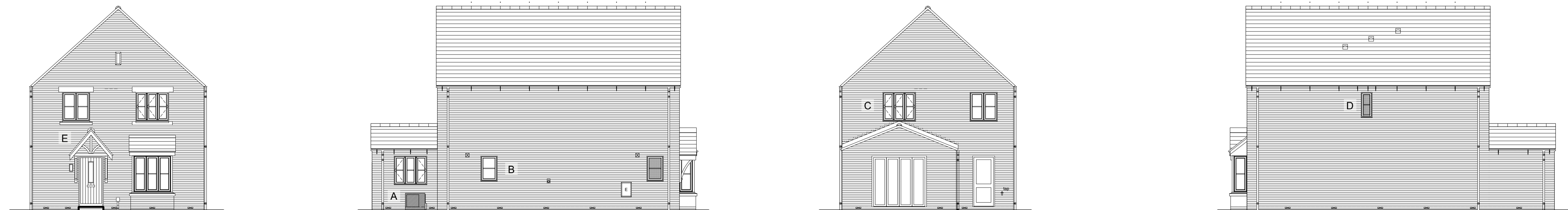
Notes:
- rear ground floor window & door 'A' handed for improved internal layout
- large side window 'B' deleted which would otherwise face onto two tandem parking spaces
- single bathroom window replaced with two slim windows, for bathroom and ensuite

House type 'Warmington' a.k.a. 4Bsp2
Plt 17 (Opp), Plt 18 (As)

REM approved



Technical design stage adjustment



Notes:
- side window 'A' enlarged after Part O audit.
- Utility window 'B' added after Part O audit.
- rear window 'C' enlarged after Part O audit.
- bathroom window 'D' to both Plt 17 & 18, not just 17.
- Plt 18 apex door canopy as shown, per REM approval
- Plt 17 flat door canopy (not shown here), per REM approval



This drawing is the copyright of GreenSquareAccord ©. All rights reserved.

scalebar 1:100 @ A1
0 5m

E: design.team@greensquareaccord.co.uk T: 0300 111 7000

PLANNING

REV	DESCRIPTION	DATE	AUTH	CHKD

Project
**Land at Tappers Farm
Oxford Road, Bodicote**

Elevations compared:
**REM approved and
Tech design proposals**

Date	28.09.23	Status	Planning
Scale	1:100 @ A1	Drawn by	CAB
Project No.	22-029	Checked by	-
		Drawing No.	P/KN/200 / -
		Revision	