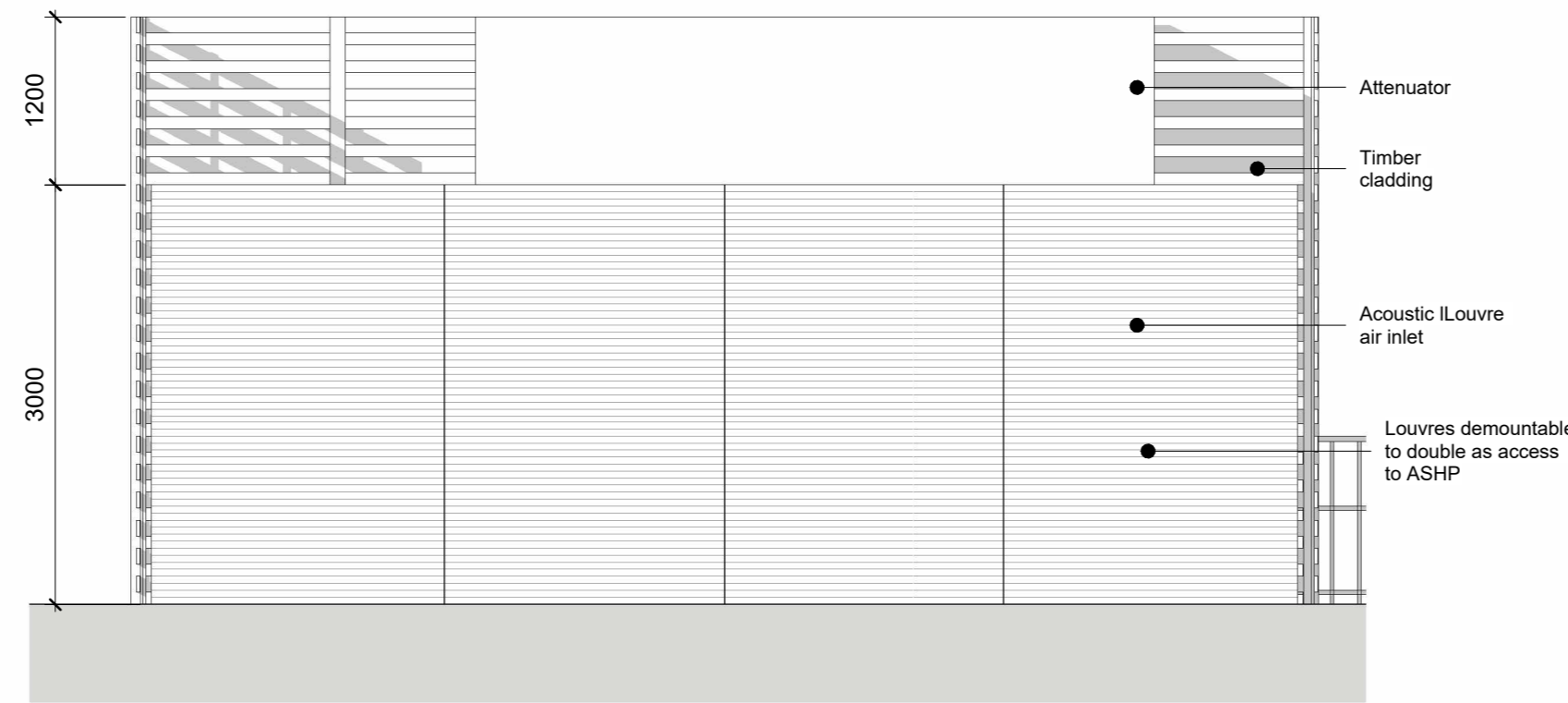
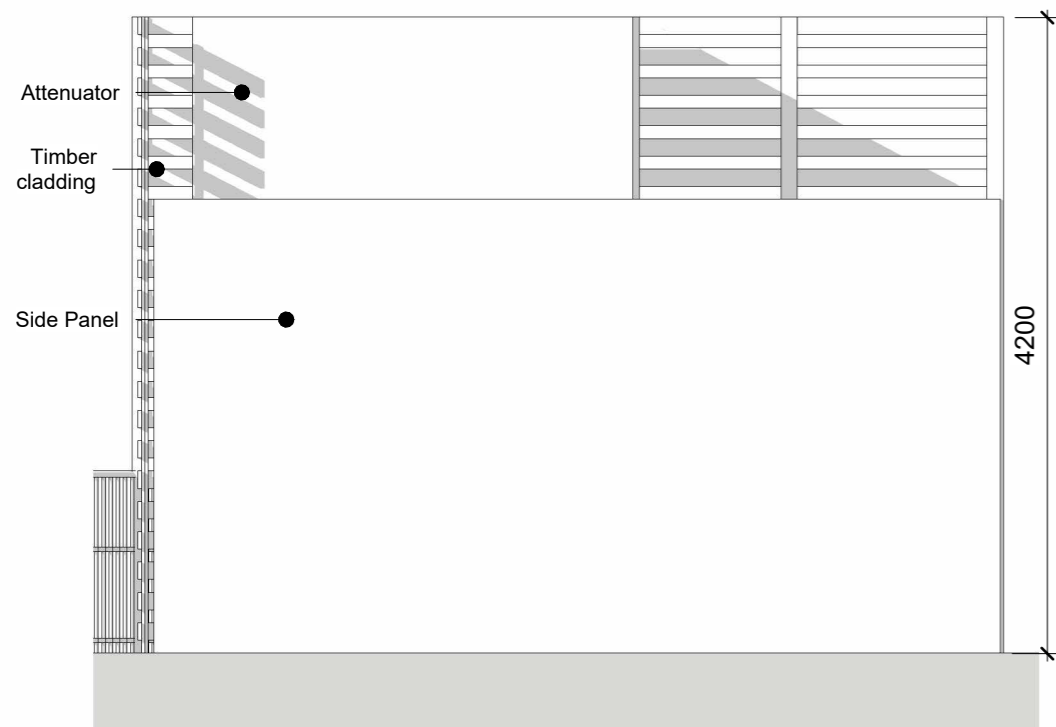
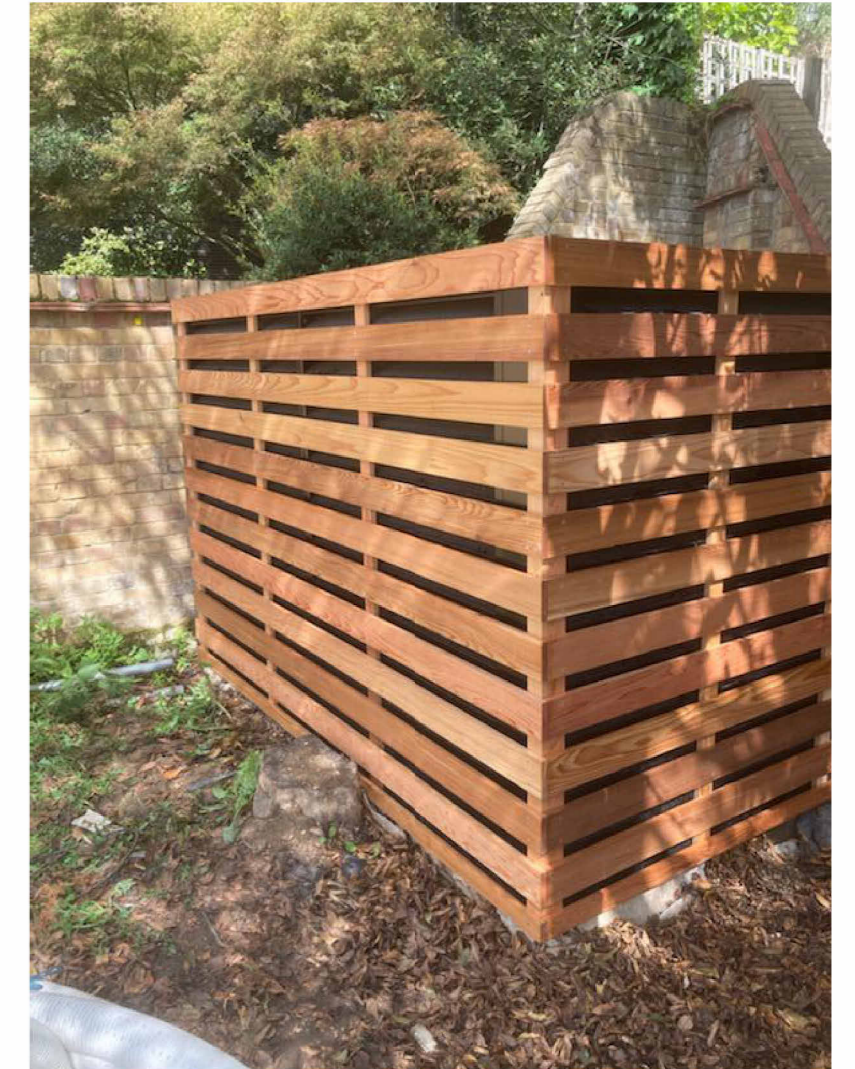


1 00-Plans - Ground Floor-Acoustic enclosure
1 : 100

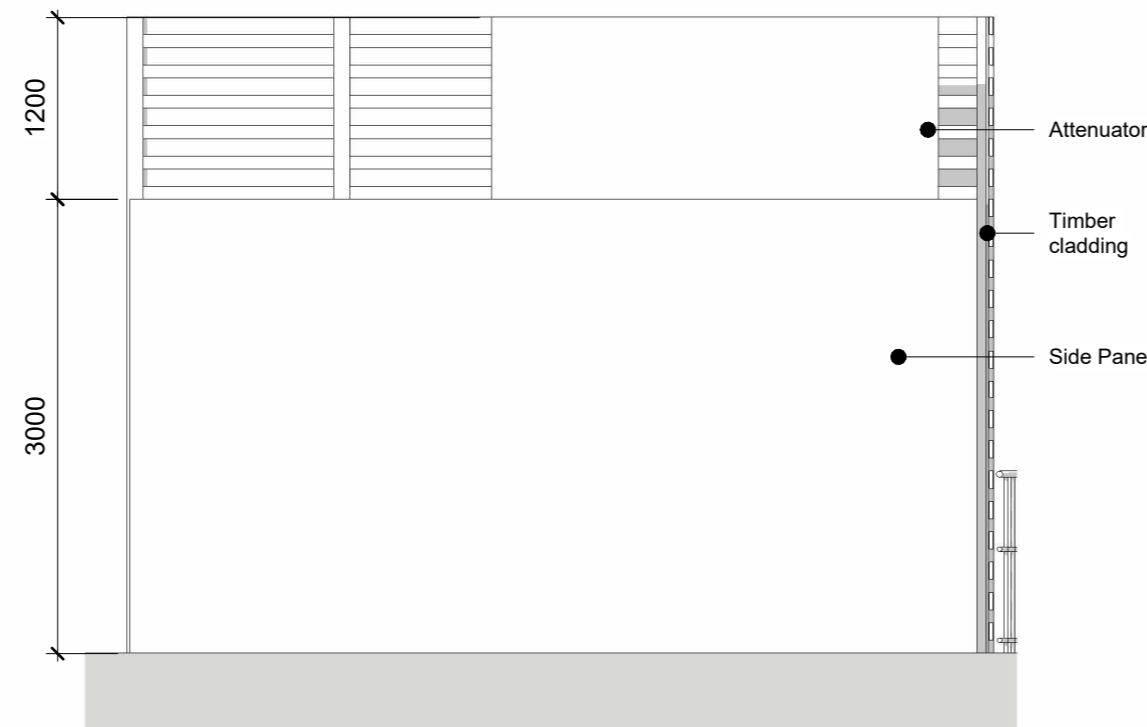


2 Elevation A-Acoustic enclosure
1 : 50

- Sides**
1.2mm Folded galvanised steel frame
0.9 Galvanised perforated sheet steel retaining controlled density mineral wool infill
- Exhaust Air Attenuator**
1.2mm Folded galvanised steel frame
0.9mm Folded steel splitter sections
0.9mm Galvanised perforated sheet steel retaining controlled density mineral wool infill
Bird guard
- Air Inlet**
1.2mm Folded galvanised steel frame
Bird guard
0.9mm Folded galvanised sheet steel blade section
0.9mm Galvanised perforated sheet steel retaining controlled density mineral wool infill
- Colour RAL 8011 Nut brown



3 Elevation B-Acoustic enclosure
1 : 50



4 Elevation C-Acoustic enclosure
1 : 50



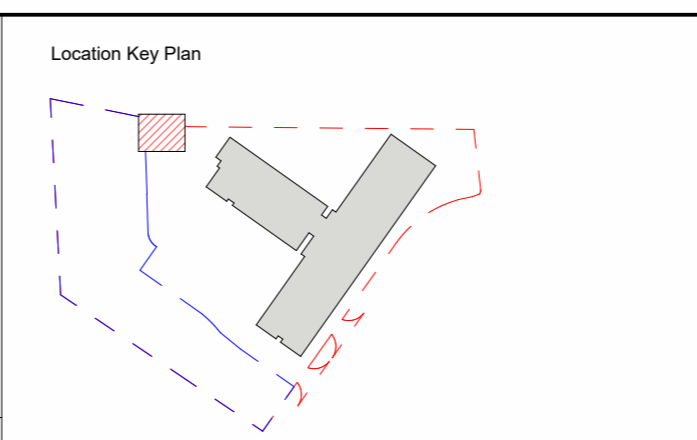
5 Elevation D-Acoustic enclosure1
1 : 50

0 0.5 1 1.5 2.0 2.5 5.0m

NORTH

The copyright of this drawing is vested with Corstorphine & Wright Ltd and must not be copied or reproduced without the consent of the company.

Rev.	Description	Date	Drw.	Chk.
P03	Notes amended	26/10/2023	YL	MU
P02	Timber cladding added	25/10/2023	YL	MU
P01	First Issue	29/9/2023	YL	JS



Client:
Preferred Homes LTD

Project:
Extracare, Kingsmere, Bicester

Drawing Title:
Acoustic enclosure-Plans and Elevations

Drawing Status:
PLANNING

Corstorphine & Wright

Newcastle Studio
Suite 3, 60 Grey Street, Newcastle Upon Tyne, NE1 6AF
0191 816 3437
corstorphine-wright.com

Drawn	Checked	Paper Size	Scale	Date
YL	JS	A2	As indicated	09/29/23

Drawing No. 21413-CWA-B1-00-DR-A-2022
Revision P03