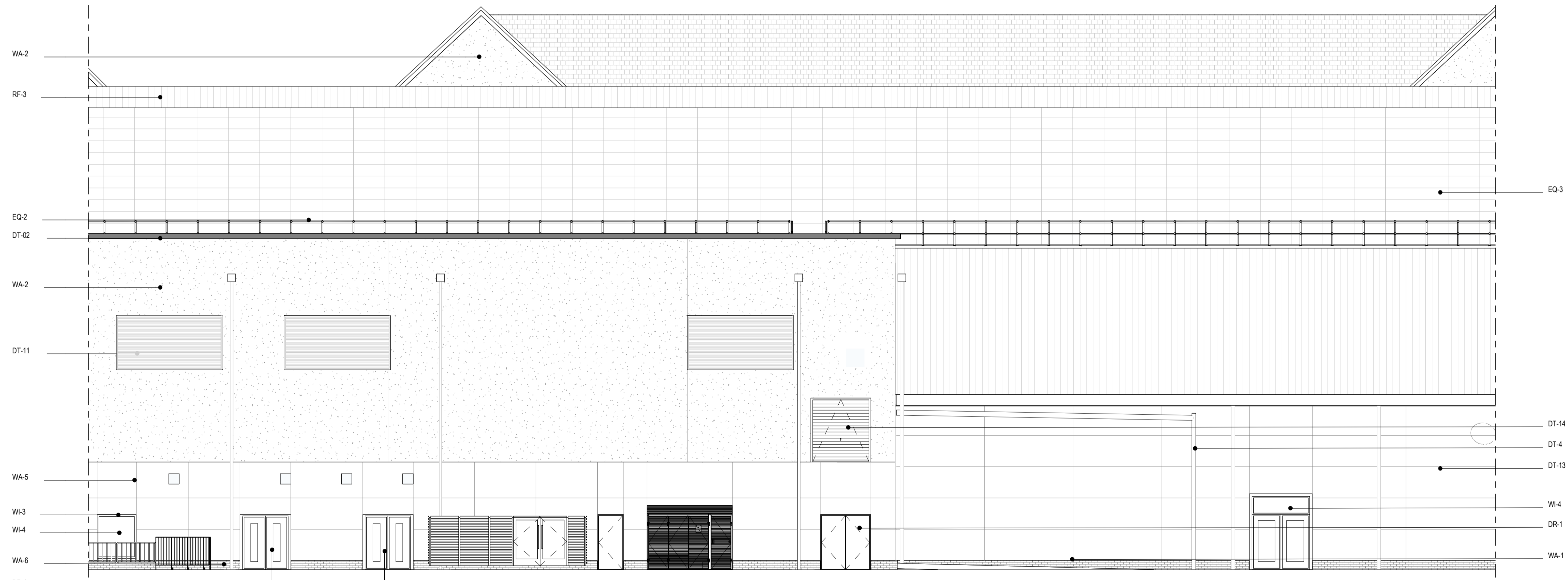
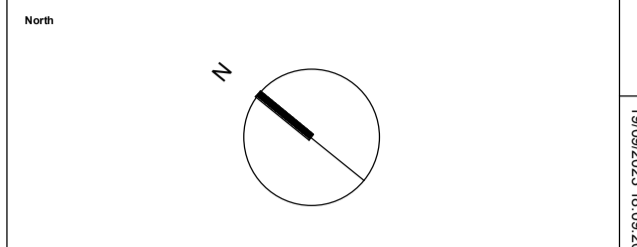
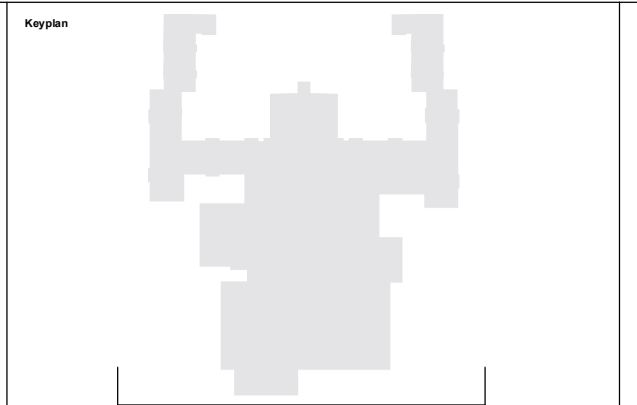
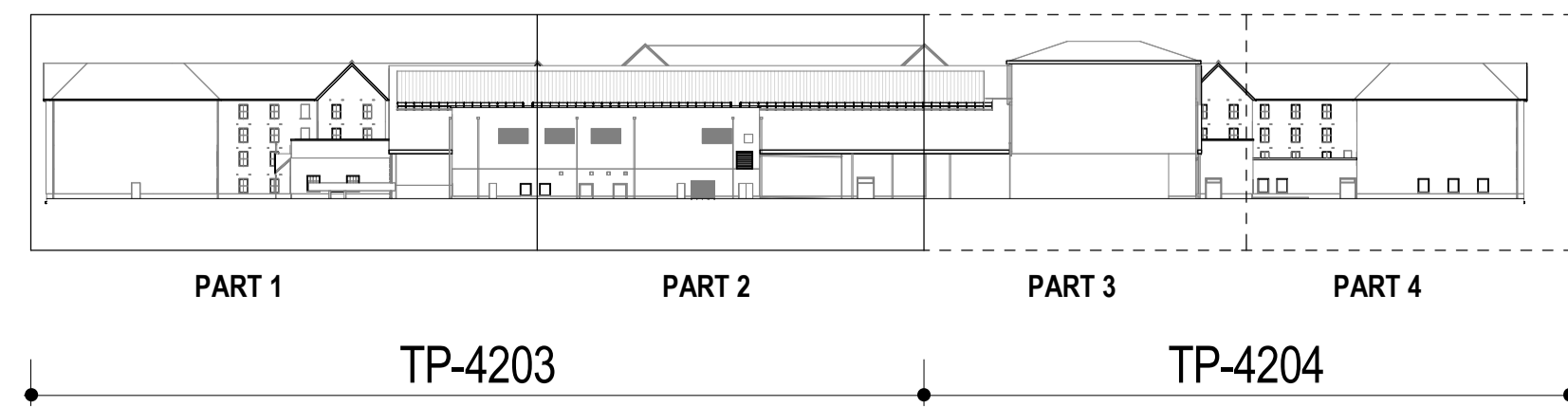




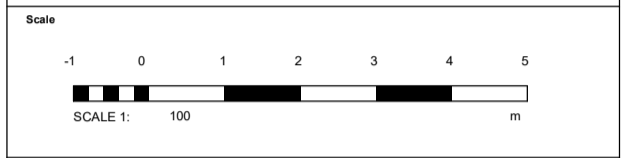
1 SW Elevation - Part 1  
1:100



2 SW Elevation - Part 2  
1:100



**Notes:**  
 1. Stonework, render, cladding & roof tile patterns indicative - shown for illustrative purposes.  
 2. This drawing has been prepared for use in connection with the application for planning consent for the project only.  
 3. The document/drawing/model contains design information provided by a third party which is included for reference purposes only. This design information has not been checked or verified by EPR Architects and EPR Architects accepts no liability for it.



- Key:**
- WA-1 Stone
  - WA-2 Light cream render
  - WA-3 Timber cladding
  - WA-4 Green coloured metal corrugated cladding
  - WA-5 Concrete panels
  - WA-6 Engineering brickwork
  - RF-1 Dark red roof tiles
  - RF-2 Dark grey roof tiles
  - RF-3 Green corrugated metal cladding
  - WI-1 Dark slate grey metal window frame
  - WI-2 Cream metal window frame
  - WI-3 Light grey metal window frame
  - WI-4 Slate
  - DR-1 Light grey metal door frame
  - DR-2 Grey metal barn doors - 1 lead
  - DR-3 Dark slate grey door frame
  - DR-4 Cream metal door frame
  - DR-5 Louvered Doors
  - DT-1 Stone facade detailing
  - DT-2 Metal coping
  - DT-3 Dark grey gutter
  - DT-4 Light grey downpipe
  - DT-5 Timber
  - DT-6 Timber base for sign
  - DT-7 Concrete
  - DT-8 Metal decorative element
  - DT-9 Light grey metal window sill
  - DT-10 Dark slate grey metal window sill
  - DT-11 Metal cornice
  - DT-12 Multi-coloured water slides
  - DT-13 Roller shutter
  - EQ-1 Flue
  - EQ-2 Air handling unit
  - EQ-3 PV panels

10875-EPR-00-XX-DR-A-TP-4204

**Notes:**  
 1. Stonework, render, cladding & roof tile patterns indicative - shown for illustrative purposes.  
 2. This drawing has been prepared for use in connection with the application for planning consent for the project only.  
 3. The document/drawing/model contains design information provided by a third party which is included for reference purposes only. This design information has not been checked or verified by EPR Architects and EPR Architects accepts no liability for it.

No.	Revision	Date	Initial	Chkd
C02	Planning Amendment Issue	22.09.23	SP	AJ
C01	Planning Amendment Issue	08.02.23	VM	AJ
P05	S2 - Planning Addendum Issue	10.12.21	NG	AJ
P04	S2 - Planning draft issued for Information	07.12.21	NG	AJ
P03	Planning Issue	08.11.19	LGO	AJ
P02	Preliminary Planning Issue	30.10.19	LGO	AJ
P01	Preliminary Planning Issue	25.10.19	LGO	CT

**EPR ARCHITECTS**  
 +44 20 7332 7600  
 www.epr.co.uk

Proposed Great Wolf Lodge - Chesterton, Boston, Leicestershire  
 EPR Project No: 10875

Proposed Elevations - South-West

Scale (A1)	Purpose of Issue	Status code	Revision
As indicated	Published	A4	C02

Project Code	Original	Revised	Level	Type	Rev	Date	Number
10875	EPR	00	XX	DR	A	TP-4203	