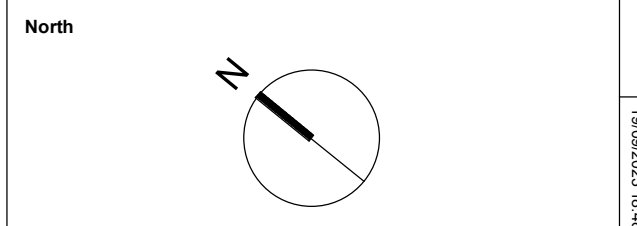
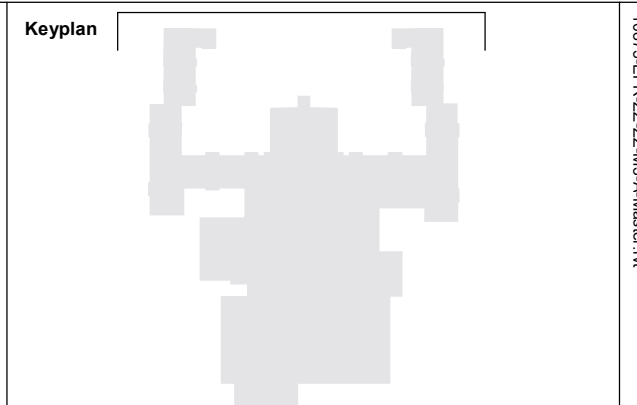
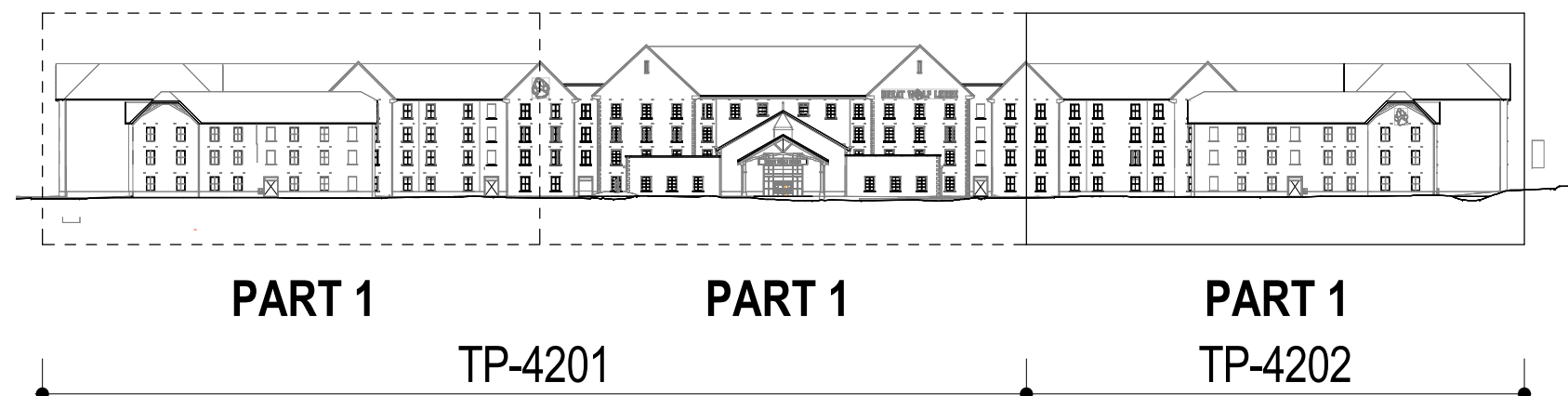


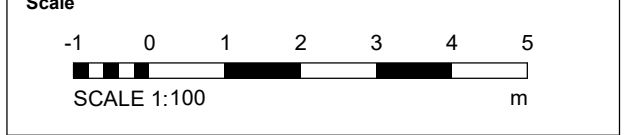
10875-EPR-00-XX-DR-A-TP-4201



3 NE Elevation - Part 3
1:100



Notes:
Do not scale off this document/drawing/model for any purposes other than those required in connection with the application for planning consent for the project. This document/drawing/model is prepared for the sole use of EPR Architects' employer and the benefit of the employer's permitted licensees. No liability to any other persons is accepted by EPR Architects.
EPR Architects accepts no liability for any use of this document/drawing/model by parties other than the party for whom it was prepared or for purposes other than those for which it was prepared.
Copyright in the design contained in this document/drawing/model remains vested in EPR Architects.
The area information contained in this document/drawing/model/schedule reflects the anticipated approximate areas of the project based on the current state of the design. The area dimensions have been calculated generally in accordance with the RICS Code of Measuring Practice, 6th Edition and have been calculated in metric units and expressed in both metric and imperial units. Where there is a discrepancy, the metric units take precedence.



- Key:**
WA-1- Stone
WA-2- Light cream render
WA-3- Timber cladding
WA-4- Green coloured metal corrugated cladding
WA-5- Concrete panels
WA-6- Engineering buff brick
- RF-1- Dark red roof tiles
RF-2- Dark grey roof tiles
RF-3- Green corrugated metal cladding
- WI-1- Dark slate grey metal window frame
WI-2- Cream metal window frame
WI-3- Light grey metal window frame
WI-4- Glass
- DR-1- Light grey metal door frame
DR-2- Grey metal barn doors - fixed
DR-3- Dark slate grey door frame
DR-4- Cream metal door frame
DR-5- Louvred Doors
- DT-1- Stone facade detailing
DT-2- Metal coping
DT-3- Dark grey gutter
DT-4- Dark grey downpipe
DT-5- Timber
DT-6- Timber board for sign
DT-7- Concrete
DT-8- Metal decorative element
DT-9- Light grey metal window cill
DT-10- Dark slate grey metal window cill
DT-11- Metal louvres
DT-13- Multi-coloured water slides
DT-14- Roller shutter
- EQ-1- Flue
EQ-2- Air handling unit
EQ-3- PV panels

- Notes:**
1. Stonework, render, cladding & roof tile patterns indicative - shown for illustrative purpose.
2. This drawing has been prepared for use in connection with the application for planning consent for the project only.
3. This document/drawing/model contains design information provided by a third party which is included for reference purposes only. This design information has not been checked or verified by EPR Architects and EPR Architects accepts no liability for it.

No.	Revision	Date	Initial	Chk'd
C02	Planning Amendment Issue	22.09.23	SP	AJ
C01	Planning Amendment Issue	08.02.23	VM	AJ
P06	S2 - Planning Addendum Issue	10.12.21	NG	AJ
P05	S2 - Planning draft issued for information	07.12.21	NG	AJ
P04	Planning Issue - Generator added	25.11.19	CT	AJ
P03	Planning Issue	08.11.19	LGO	AJ
P02	Preliminary Planning Issue	30.10.19	LGO	AJ
P01	Preliminary Planning Issue	25.10.19	LGO	CT

EPR ARCHITECTS
+44 20 7332 7600
www.epr.co.uk

Proposed Great Wolf Lodge - Chesterton, Bicester, Oxfordshire EPR Project No 10875

Proposed Elevations - North-East

Scale @A1 Purpose of Issue Status code Revision
As indicated Published A4 - C02

Project Code Originator Zone Level Type Rate Class Number
10875 - EPR - 00 - XX - DR - A - TP-4202