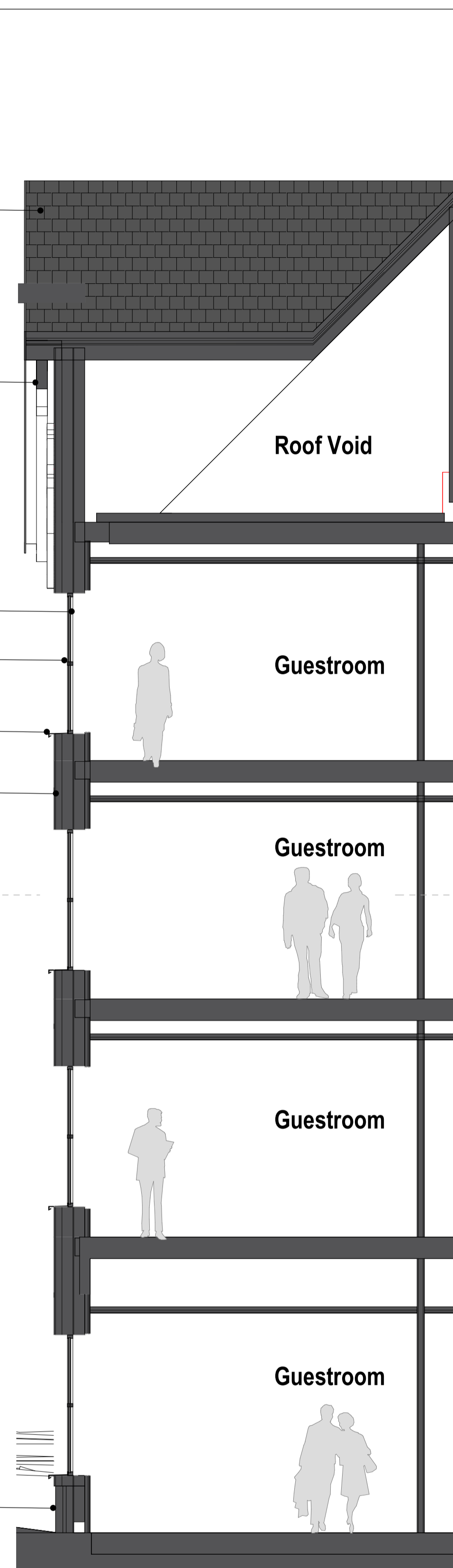
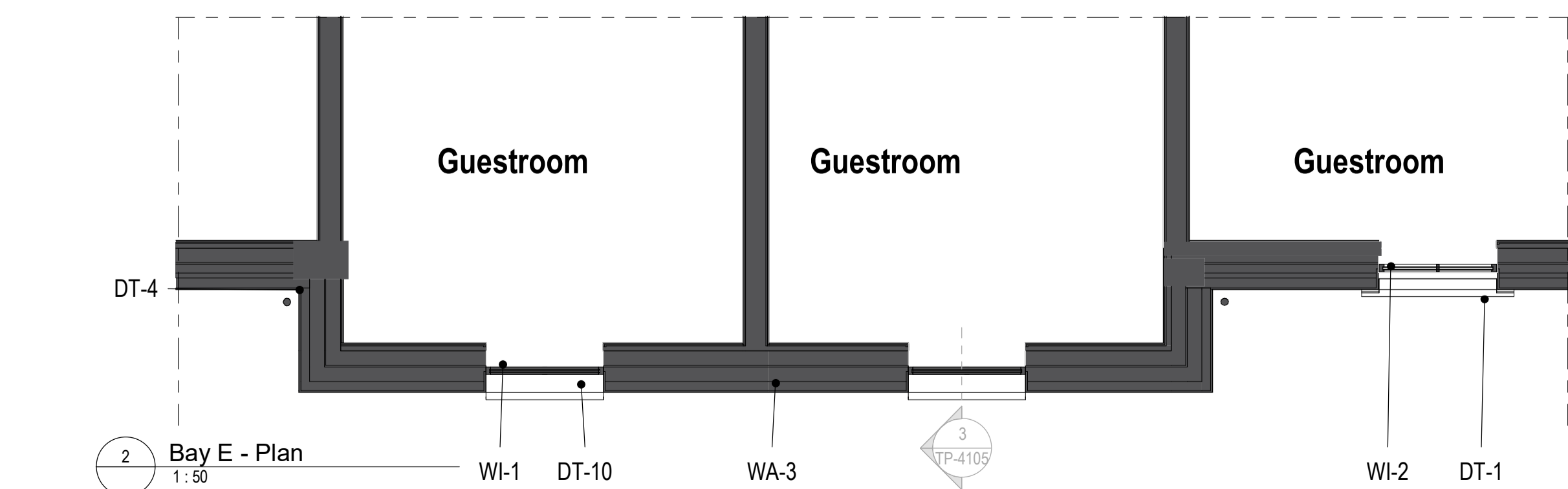




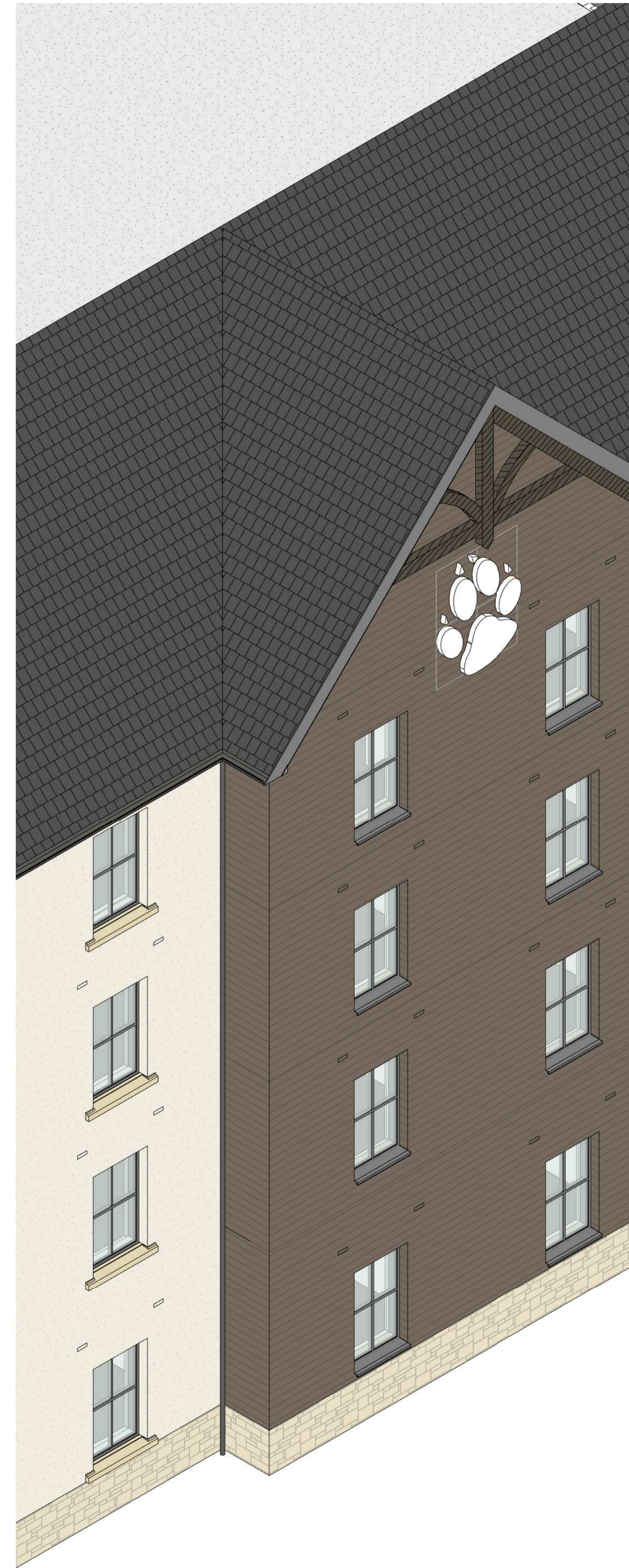
1 Bay E - Elevation NW  
1:50



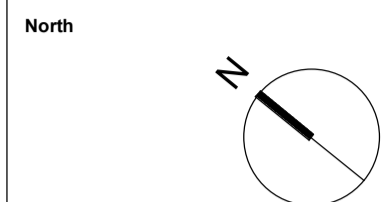
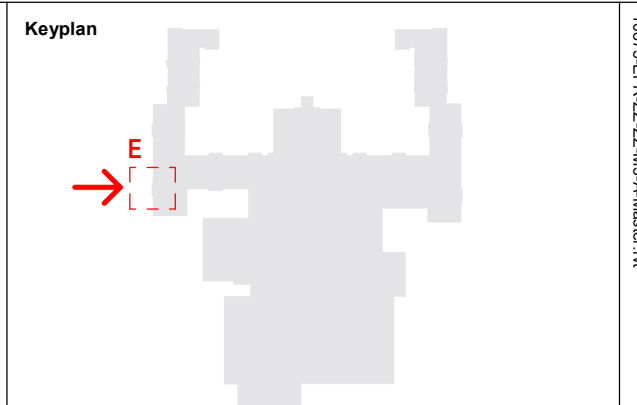
3 Bay E - Section  
1:50



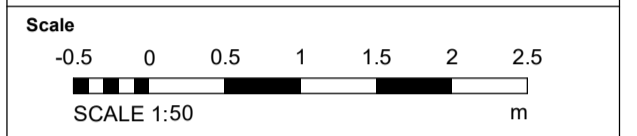
2 Bay E - Plan  
1:50



4 Bay E - Axonometric



**Notes:**  
Do not scale off this document/drawing/model for any purposes other than those required in connection with the application for planning consent for the project. This document/drawing/model is prepared for the sole use of EPR Architects' employer and the benefit of the employer's permitted licensees. No liability to any other persons is accepted by EPR Architects.  
EPR Architects accepts no liability for any use of this document/drawing/model by parties other than the party for whom it was prepared or for purposes other than those for which it was prepared.  
Copyright in the design contained in this document/drawing/model remains vested in EPR Architects.  
The area information contained in this document/drawing/model/schedule reflects the anticipated approximate areas of the project based on the current state of the design. The areas/dimensions have been calculated generally in accordance with the RICS Code of Measuring Practice, 6th Edition and have been calculated in metric units and expressed in both metric and imperial units. Where there is a discrepancy, the metric units take precedence.



- Key:**  
WA-1- Stone  
WA-2- Light cream render  
WA-3- Timber cladding  
WA-4- Green coloured metal corrugated cladding  
WA-5- Concrete panels  
WA-6- Engineering buff brick
- RF-1- Dark red roof tiles  
RF-2- Dark grey roof tiles  
RF-3- Green corrugated metal cladding
- WI-1- Dark slate grey metal window frame  
WI-2- Cream metal window frame  
WI-3- Light grey metal window frame  
WI-4- Glass
- DR-1- Light grey metal door frame  
DR-2- Grey metal barn doors - fixed  
DR-3- Dark slate grey door frame  
DR-4- Cream metal door frame  
DR-5- Louvered Doors
- DT-1- Stone facade detailing  
DT-2- Metal coping  
DT-3- Dark grey gutter  
DT-4- Dark grey downpipe  
DT-5- Timber  
DT-6- Timber board for sign  
DT-7- Concrete  
DT-8- Metal decorative element  
DT-9- Light grey metal window cill  
DT-10- Dark slate grey metal window cill  
DT-11- Metal louvres  
DT-13- Multi-coloured water slides  
DT-14- Roller shutter
- EQ-1- Flue  
EQ-2- Air handling unit  
EQ-3- PV panels

- Notes:**  
1. Stonework, render, cladding & roof tile patterns indicative - shown for illustrative purposes.  
2. This drawing has been prepared for use in connection with the application for planning consent for the project only.  
3. This document/drawing/model contains design information provided by a third party which is included for reference purposes only. This design information has not been checked or verified by EPR Architects and EPR Architects accepts no liability for it.

No.	Revision	Date	Initial	Chk'd
C02	Planning Amendment Issue	22.09.23	SP	AJ
C01	Planning Amendment Issue	08.02.23	VM	AJ
P05	S2 - Planning Addendum Issue	10.12.21	NG	AJ
P04	S2 - Planning draft issued for Information	07.12.21	NG	AJ
P03	Planning Issue	08.11.19	LGO	AJ
P02	Preliminary Planning Issue	30.10.19	LGO	AJ
P01	Preliminary Planning Issue	25.10.19	LGO	CT

EPR ARCHITECTS		EPR Project No	
+44 20 7312 7600 www.epr.co.uk		10875	
Proposed Great Wolf Lodge - Chesterton, Bicester, Oxfordshire		Bay E Proposed Typical Bay Study	
Scale @A1	Purpose of Issue	Status code	Revision
As indicated	Published	A4	C02
Project Code	Originator	Zone	Level
10875 - EPR - 00 - XX - DR - A - TP-4105			