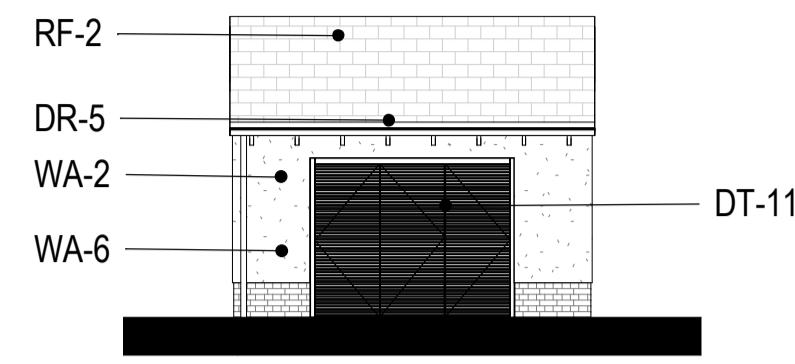
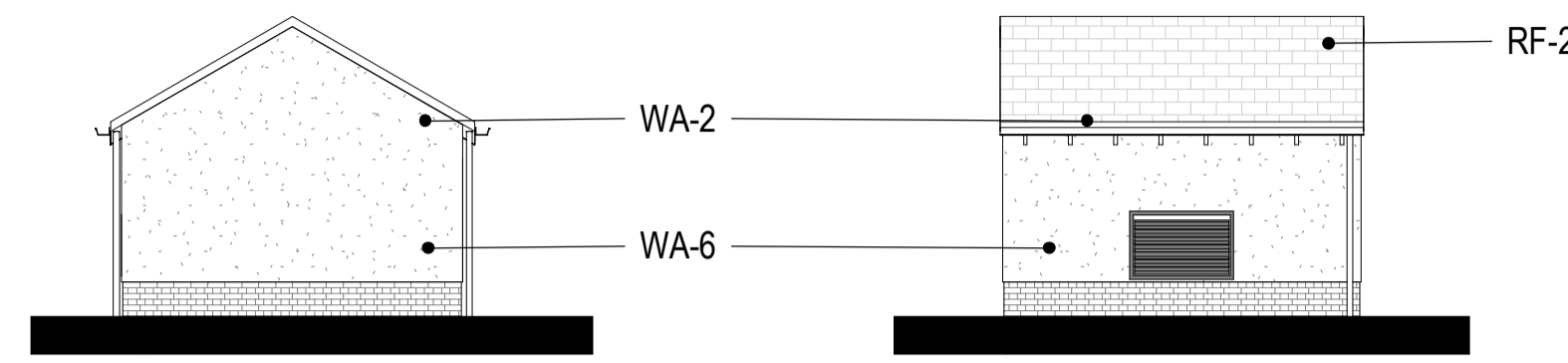


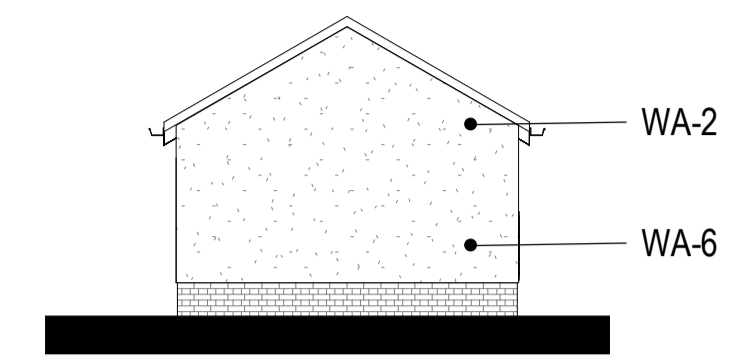
SS-2 External Substation 2 (SS-2) - Plan
1:100



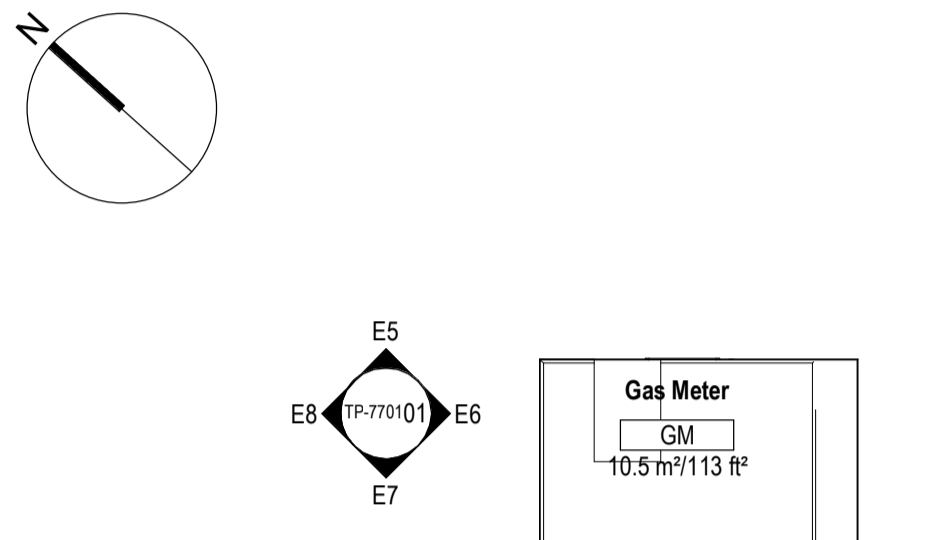
E1 Substation 2 - Elevation 1
1:100



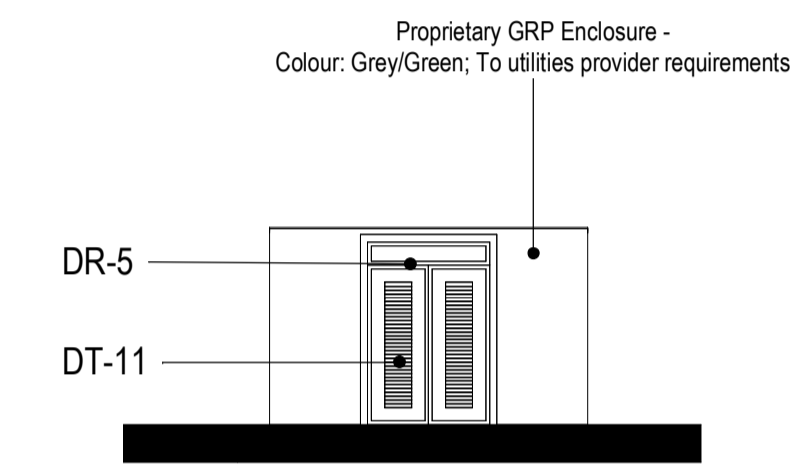
E2 Substation 2 - Elevation 2
1:100



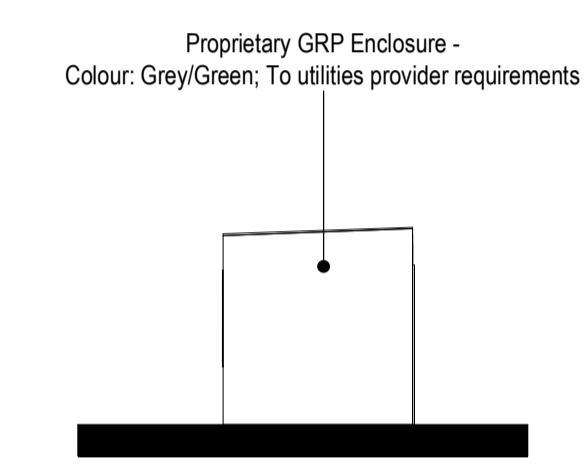
E3 Substation 2 - Elevation 3
1:100



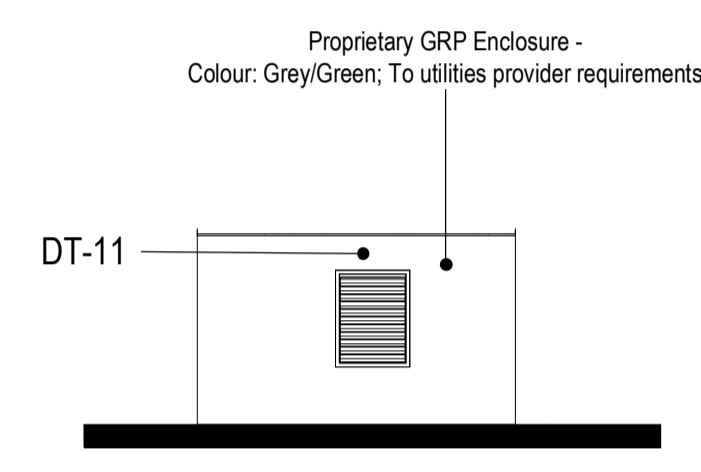
GM Gas Mains Enclosure (GM) - Plan
1:100



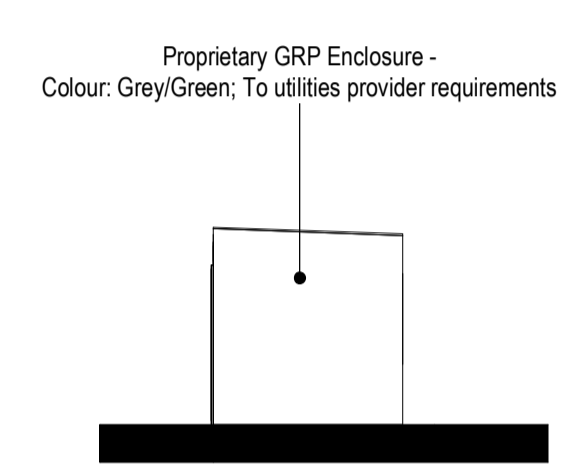
E5 Gas Mains Enclosure - Elevation 5
1:100



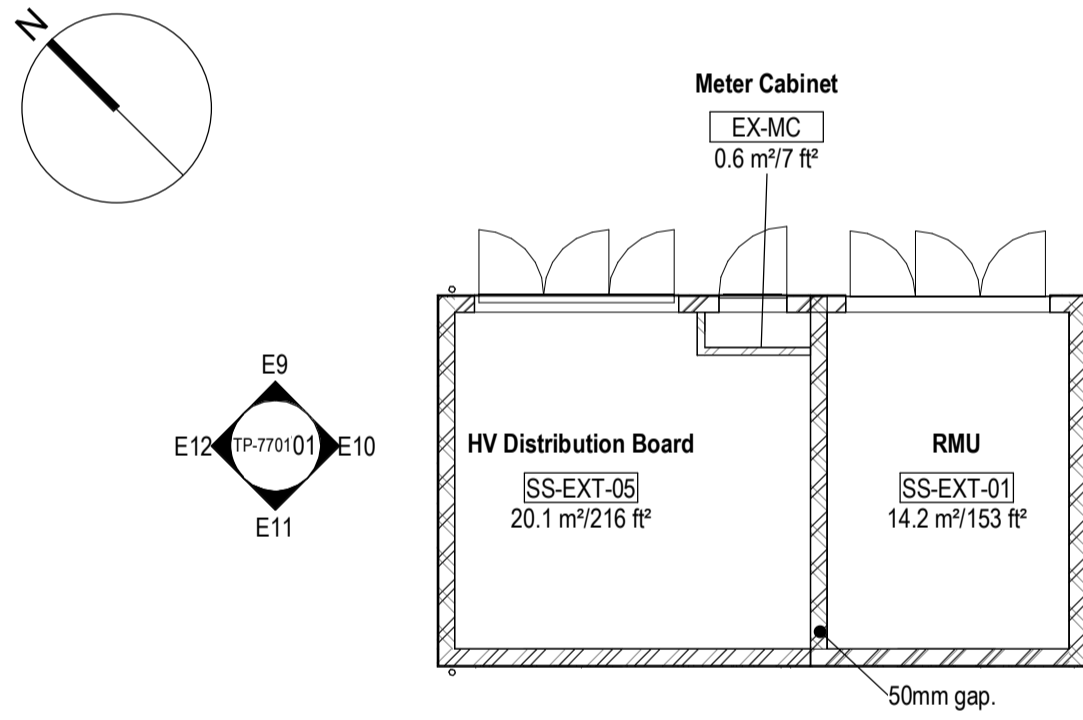
E6 Gas Mains Enclosure - Elevation 6
1:100



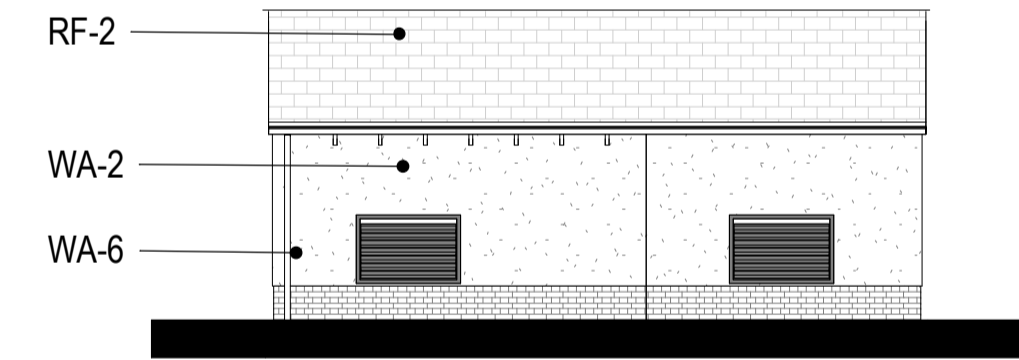
E7 Gas Mains Enclosure - Elevation 7
1:100



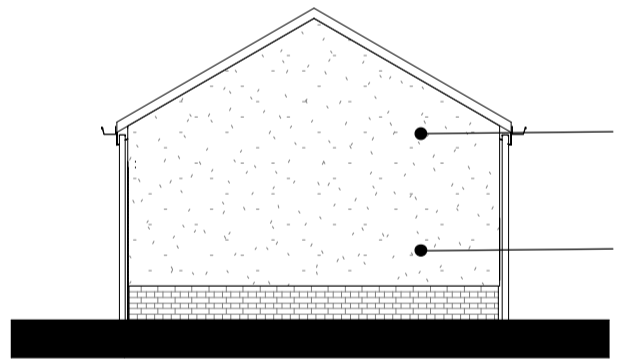
E8 Gas Mains Enclosure - Elevation 8
1:100



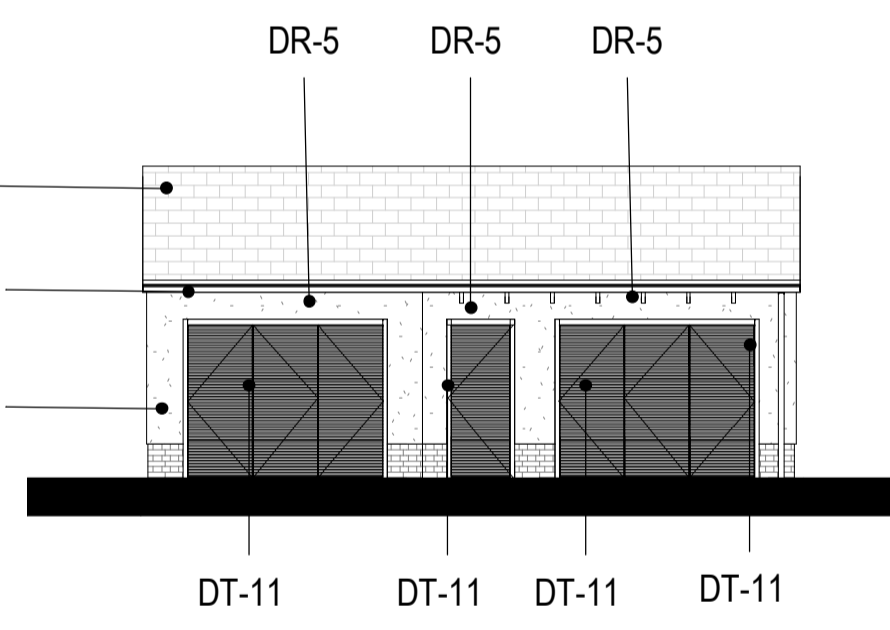
SS-1 External Substation 1 (SS-1) - Plan
1:100



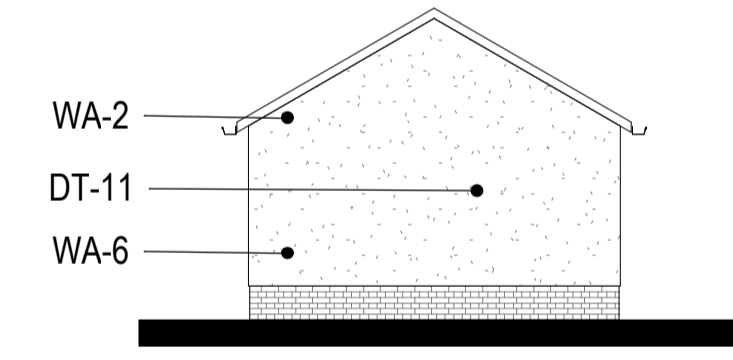
E9 Substation 1 - Elevation 9
1:100



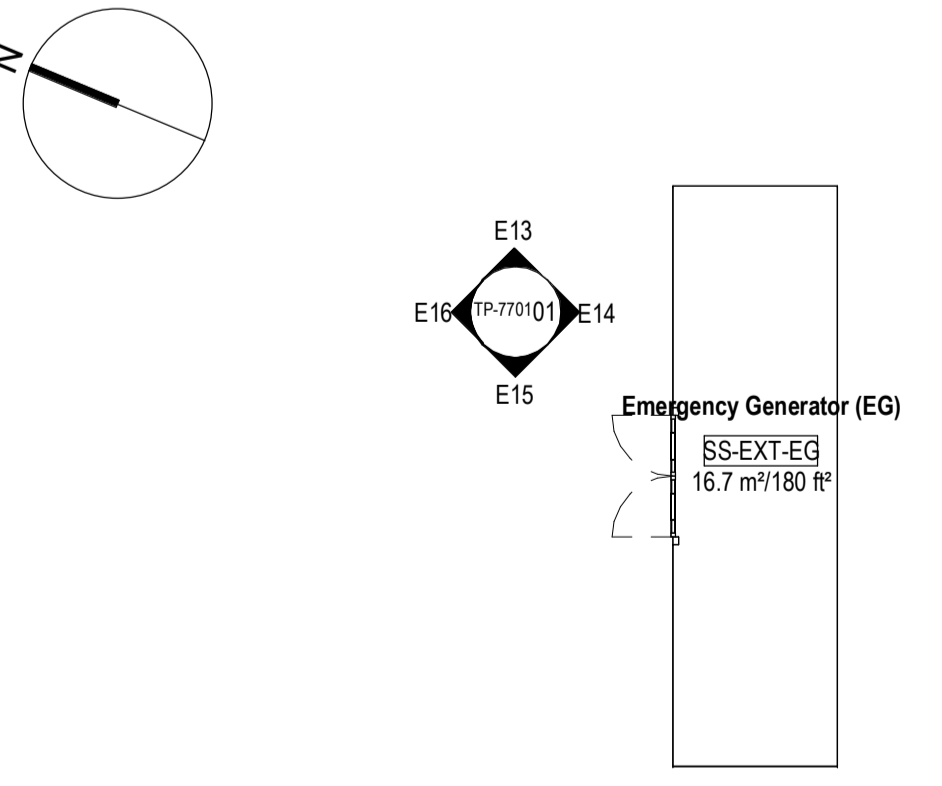
E10 Substation 1 - Elevation 10
1:100



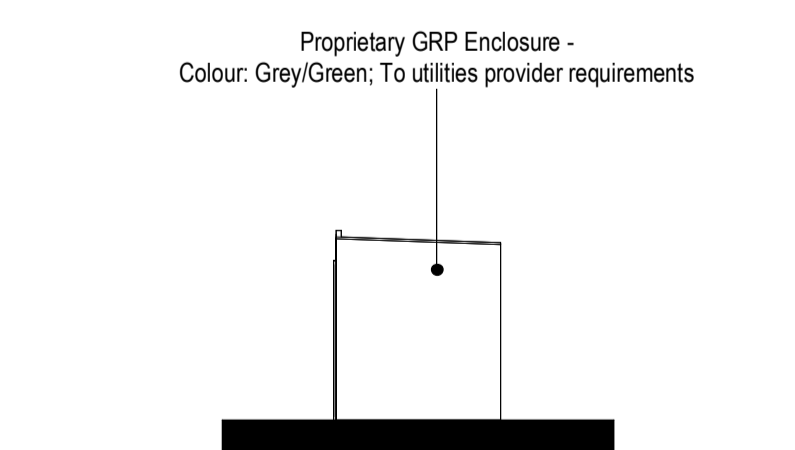
E11 Substation 1 - Elevation 11
1:100



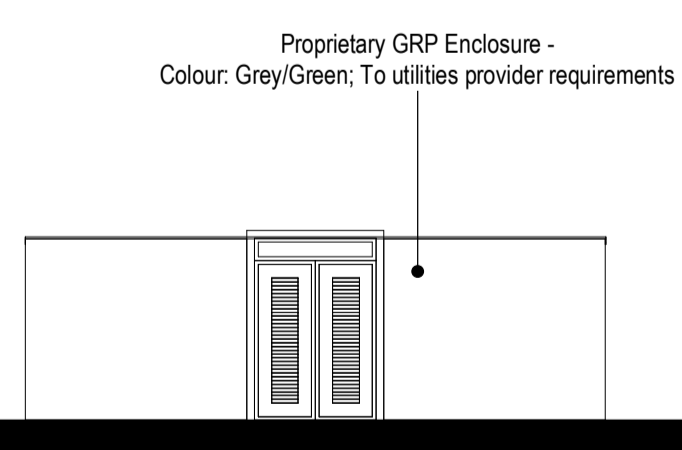
E12 Substation 1 - Elevation 12
1:100



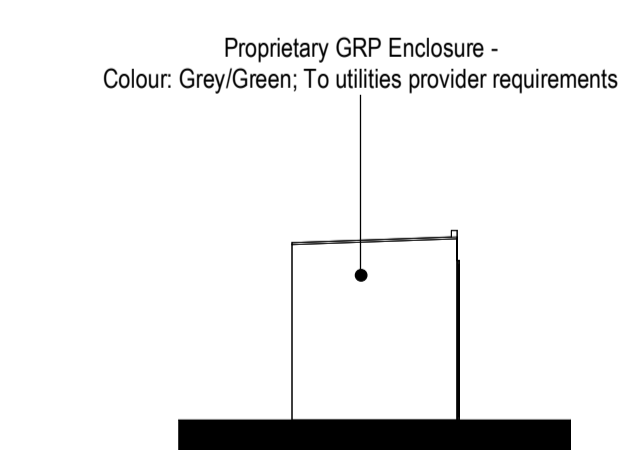
EG Emergency Generator (EG) - Plan
1:100



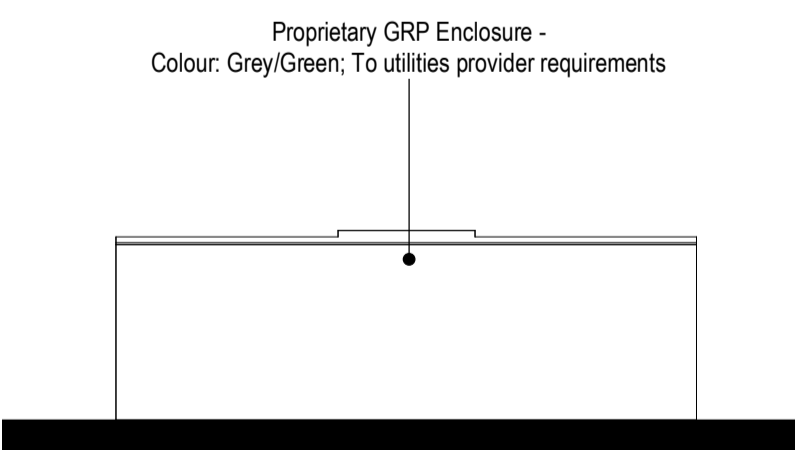
E13 Emergency Generator - Elevation 13
1:100



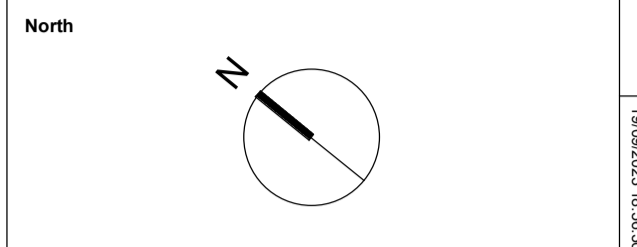
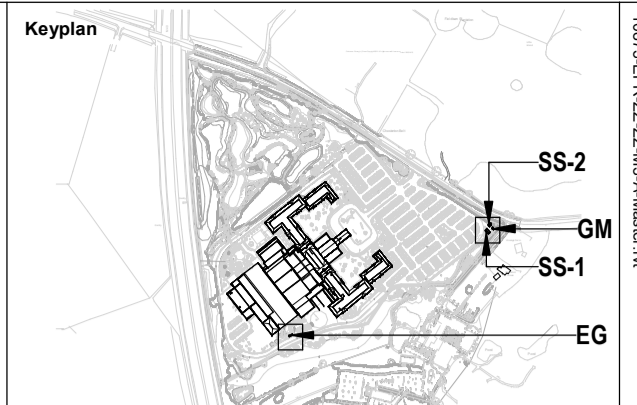
E14 Emergency Generator - Elevation 14
1:100



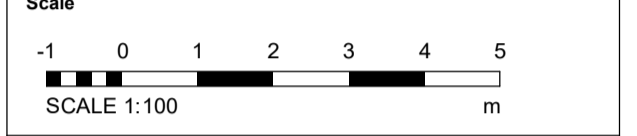
E15 Emergency Generator - Elevation 15
1:100



E16 Emergency Generator - Elevation 16
1:100



Notes:
Do not scale off this document/drawing for any purposes other than those required in connection with the application for planning consent for the project.
This document/drawing/model is prepared for the sole use of EPR Architects' employer and the benefit of the employer's permitted licensees. No liability to any other persons is accepted by EPR Architects.
EPR Architects accepts no liability for any use of this document/drawing/model by parties other than the party for whom it was prepared or for purposes other than those for which it was prepared.
Copyright in the design contained in this document/drawing/model remains vested in EPR Architects.
The area information contained in this document/drawing/model/schedule reflects the anticipated approximate areas of the project based on the current state of the design. The areas/dimensions have been calculated generally in accordance with the RICS Code of Measuring Practice, 6th Edition and have been calculated in metric units and expressed in both metric and imperial units. Where there is a discrepancy, the metric units take precedence.



Notes

- These areas have been prepared for the sole use and benefit of Great Wolf Resort, are approximate only and have been measured from the digital model and drawings.
- These areas relate to the anticipated areas of the building at the current state of the design. The areas of rooms have been calculated as NIA (RICS 6th Edition). Any decisions to be made on the basis of these predications, whether as to project viability, pre-letting, lease agreements or otherwise, should include due allowance for the increases and decreases inherent in the design development and construction processes.
- These areas have been calculated from the digital model and do not include a contingency to allow for anomalies in the surveyed information, construction tolerances, workmanship and/or design by others which may affect the stated areas.

- Key:**
- WA-1- Stone
 - WA-2- Light cream render
 - WA-3- Timber cladding
 - WA-4- Green coloured metal corrugated cladding
 - WA-5- Concrete panels
 - WA-6- Engineering buff brick
- RF-1- Dark red roof tiles
 - RF-2- Dark grey roof tiles
 - RF-3- Green corrugated metal cladding
- WI-1- Dark slate grey metal window frame
 - WI-2- Cream metal window frame
 - WI-3- Light grey metal window frame
 - WI-4- Glass
- DR-1- Light grey metal door frame
 - DR-2- Grey metal barn doors - fixed
 - DR-3- Dark slate grey door frame
 - DR-4- Cream metal door frame
 - DR-5- Louvred Doors
- DT-1- Stone facade detailing
 - DT-2- Metal coping
 - DT-3- Dark grey gutter
 - DT-4- Dark grey downpipe
 - DT-5- Timber
 - DT-6- Timber board for sign
 - DT-7- Concrete
 - DT-8- Metal decorative element
 - DT-9- Light grey metal window cill
 - DT-10- Dark slate grey metal window cill
 - DT-11- Metal louvers
 - DT-13- Multi-coloured water slides
 - DT-14- Roller shutter
- EQ-1- Flue
 - EQ-2- Air handling unit
 - EQ-3- PV panels

No.	Revision	Date	Initial	Chk'd
C02	Planning Amendment Issue	22.09.23	SP	AJ
C01	Planning Amendment Issue	08.02.23	VM	AJ
P03	Planning Issue	08.11.19	LGO	AJ
P02	Preliminary Planning Issue	30.10.19	LGO	AJ
P01	Preliminary Planning Issue	25.10.19	LGO	CT

EPR ARCHITECTS
+44 20 7312 7600
www.epr.co.uk

Proposed Great Wolf Lodge - Chesterton, Bicester, Oxfordshire EPR Project No 10875

Proposed Ancillary Buildings

Scale @A1	Purpose of Issue	Status code	Revision
As indicated	Published	A4	C02

Project Code	Originator	Zone	Level	Type	Rate	Class	Number
10875	EPR	00	GF	DR	A	TP	7701