

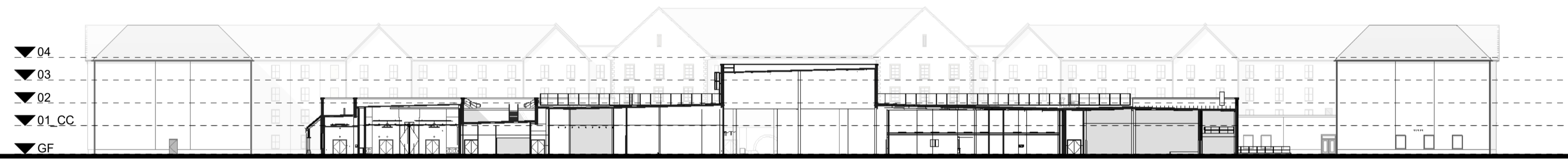
**Notes:**  
 Do not scale off this document/drawing/model for any purposes other than those required in connection with the application for planning consent for the project. This document/drawing/model is prepared for the sole use of EPR Architects' employer and the benefit of the employer's permitted licensees. No liability to any other persons is accepted by EPR Architects.  
 EPR Architects accepts no liability for any use of this document/drawing/model by parties other than the party for whom it was prepared or for purposes other than those for which it was prepared.  
 Copyright in the design contained in this document/drawing/model remains vested in EPR Architects.  
 The area information contained in this document/drawing/model/schedule reflects the anticipated approximate areas of the project based on the current state of the design. The areas/dimensions have been calculated generally in accordance with the RICS Code of Measuring Practice, 6th Edition and have been calculated in metric units and expressed in both metric and imperial units. Where there is a discrepancy, the metric units take precedence.



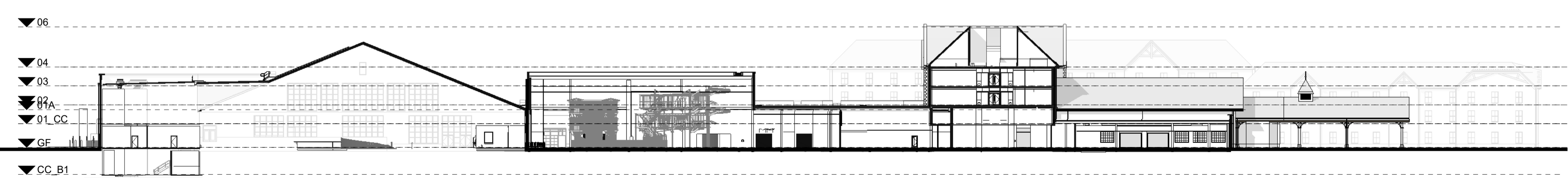
**Notes:**  
 1. Stonework, render, cladding & roof tile patterns indicative - shown for illustrative purpose.  
 2. This drawing has been prepared for use in connection with the application for planning consent for the project only.  
 3. This document/drawing/model contains design information provided by a third party which is included for reference purposes only. This design information has not been checked or verified by EPR Architects and EPR Architects accepts no liability for it.



**A SECTION AA**  
 1:500  
 GUESTROOM WING      FAMILY ENTERTAINMENT CENTRE      GUESTROOM WING



**B SECTION BB**  
 1:500  
 CONFERENCE CENTRE      FAMILY ENTERTAINMENT CENTRE      BACK OF HOUSE



**C SECTION CC**  
 1:500  
 WATERPARK & BUNKER      FAMILY ENTERTAINMENT CENTRE      LOBBY

C02	Planning Amendment Issue	22.09.23	SP	AJ
C01	Planning Amendment Issue	08.02.23	VM	AJ
P05	S2 - Planning Addendum Issue	10.12.21	NG	AJ
P04	S2 - Planning draft issued for Information	07.12.21	NG	AJ
P03	Planning Issue	08.11.19	LGO	AJ
P02	Preliminary Planning Issue	30.10.19	LGO	AJ
P01	Preliminary Planning Issue	25.10.19	LGO	CT

No.	Revision	Date	Initial	Chk'd
<b>EPR ARCHITECTS</b>				
+44 20 7312 7600 www.epr.co.uk				
Proposed Great Wolf Lodge - Chesterton, Bicester, Oxfordshire			EPR Project No 10875	
Proposed Sections				
Scale @A1 As indicated	Purpose of Issue Published	Status code Published	Revision <b>A4 - C02</b>	
Project Code	Originator	Zone	Level	Type
10875 - EPR - 00 - XX - GS - A - TP-0501				