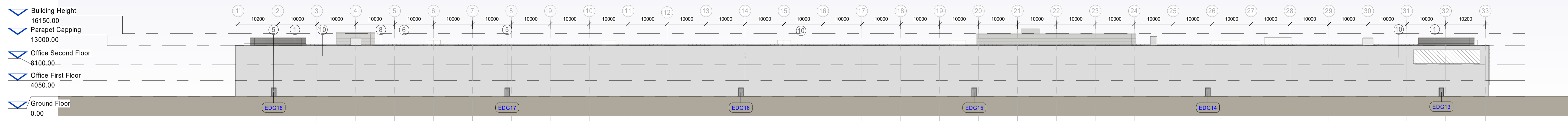
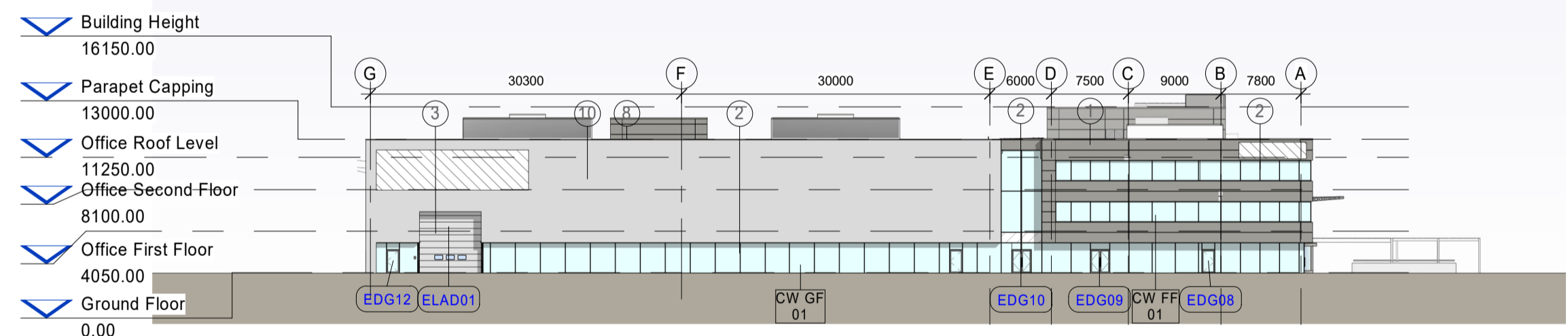


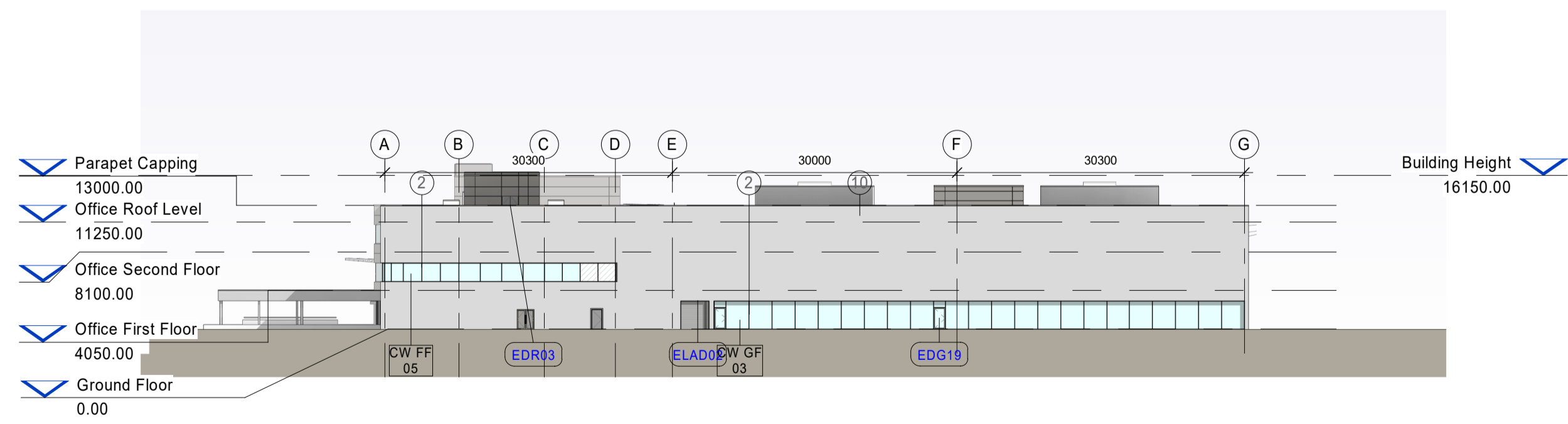
1 -North East Elevation - NMA  
1 : 500



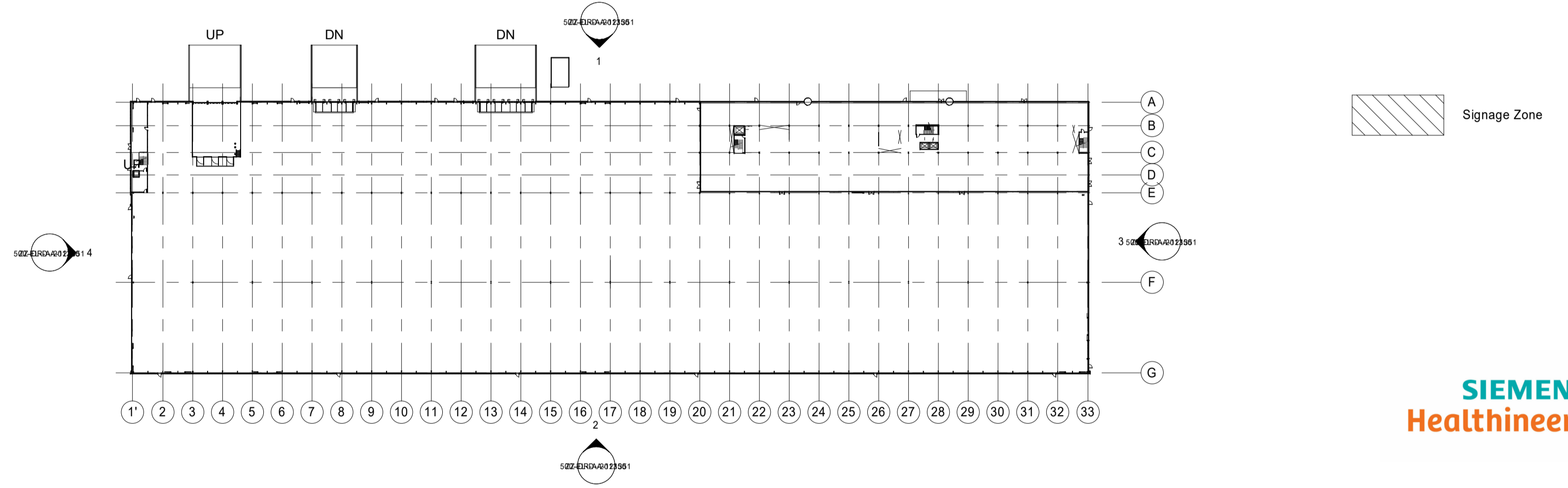
2 -South West Elevation - NMA  
1 : 500



3 -South East Elevation - NMA  
1 : 500



4 -North West Elevation - NMA  
1 : 500



5 Key Plan - Elevations - NMA  
1 : 1250

**MATERIALS**

- 1. Trimo Qbiss One Cladding (or similar) with non-combustible insulation laid in 1000mm band at 5m lengths  
Colour: Grey (RAL 9007)
- 2. Double glazed aluminium ppc  
Frame colour: Grey (RAL 9007)
- 3. Level Access Door  
Colour: Grey (RAL 9007)
- 4. Dock doors  
Colour: Grey (RAL 9007)
- 5. Fire escape doors double glazed aluminium ppc  
Frame colour: Grey (RAL 9007)
- 6. Keyclamp Railing 1100mm high off FFL  
Colour: Aluminium
- 7. Feature band Trimo Qbiss One Cladding (or similar) with non-combustible insulation laid in 1m band at 5m lengths  
Colour: Grey (RAL 9007)
- 8. Parapet capping  
Colour: Grey (RAL 9007)
- 9. Revolving doors  
colour: Grey (RAL 9007)
- 10. CA trapezoidal profile built up cladding laid horizontally  
Colour: Grey (RAL 9007)
- 11. Concrete Prowall
- 12. Single glazed aluminium ppc  
Frame colour: Grey (RAL 9007)



Waterfront House  
2a Smith Way  
Grove Park  
Enderby  
Leicester LE19 1SX  
t: +44 (0)116 247 0557  
[www.stephengeorge.co.uk](http://www.stephengeorge.co.uk)  
Symmetry Park,  
Oxford

Drawing Name:	Elevations					
Drawing Stage:	PLANNING					
Status:	S3					
SGP File Ref:	000002					
SGP Project No:	13-222					
Date:	10/08/23					
Drawn:	JH					
Team:	MMS					
Scale:	1:500 @ A1					
Rev:	P02					
Drawing Number:	13-222-SGP-500-EL-D-A-121351					
Project Code	Originator	FB	SB	Form	Role	Number

