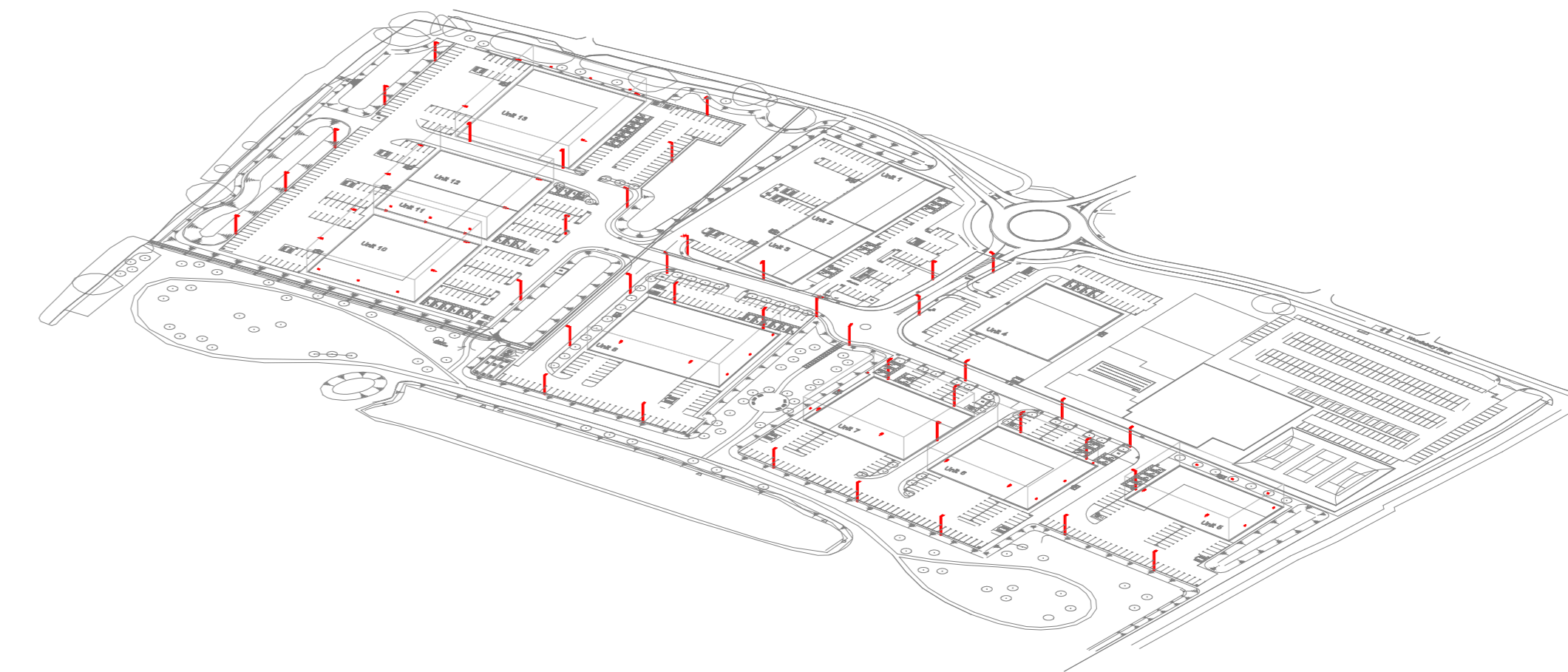
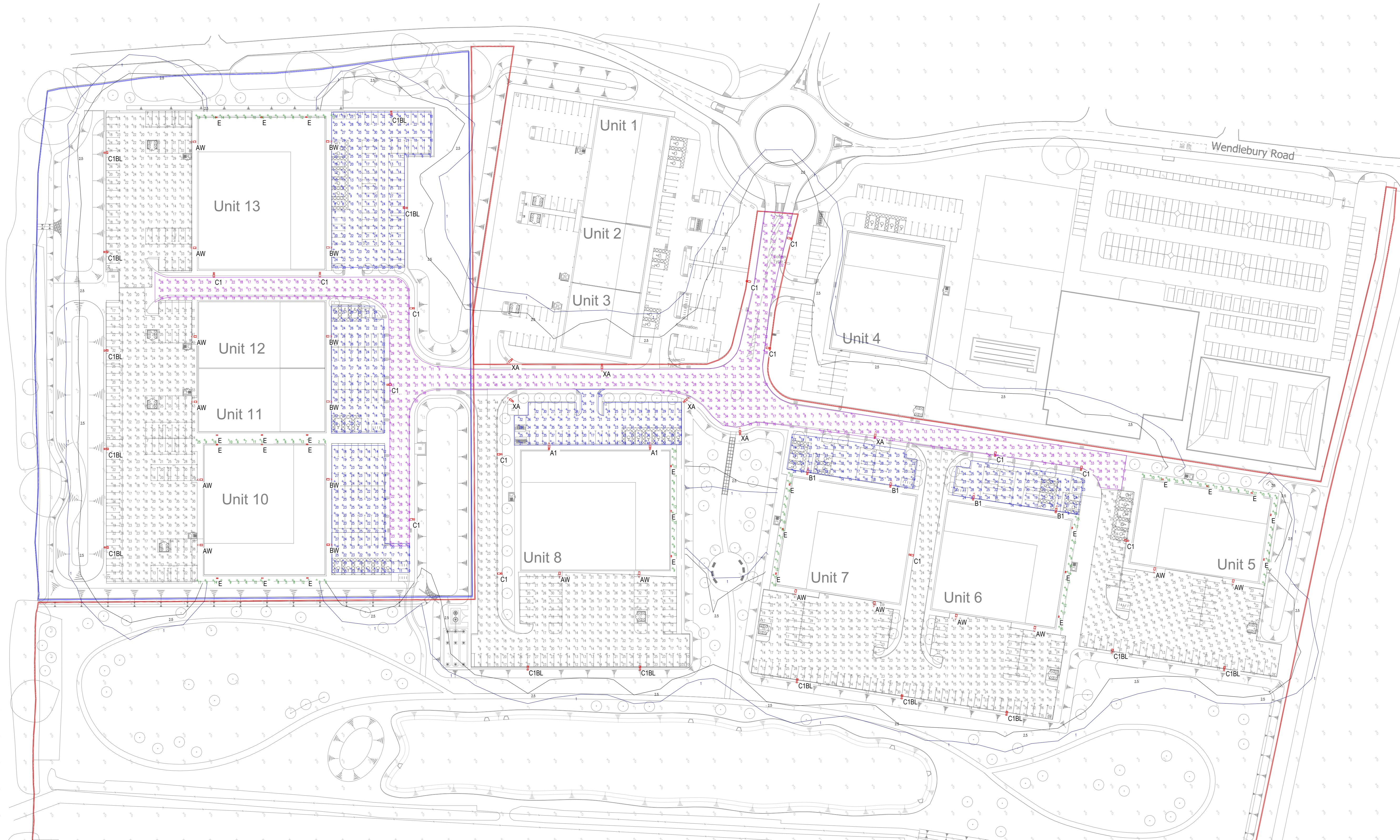


Symbol	Label	Quantity	Casting Number	Description	Lumens Per Lamp	Wattage
	A1	2	DSX1.2.LA224.FW on 8m Column	D-Series 1 Luminaire	24252	208
	AW	14	DSX1.2.LA224.FW on Wall Bracket at 8m AFFL	D-Series 1 Luminaire	24252	208
	B1	4	DSX1.2.LA164.FW on 8m Column	D-Series 1 Luminaire	17044	131
	BW	6	DSX1.2.LA164.FW on Wall Bracket at 8m AFFL	D-Series 1 Luminaire	17044	131
	C1	14	DSX1.2.LA164.AY on 8m Column	D-Series 1 Luminaire	16556	131
	C1BL	14	DSX1.2.LA164.AY/BS on 8m Column	D-Series 1 Luminaire with Back Light Shield	13416	131
	E	26	DWL 1.LA214.HN.V9027 at 2.7m AFFL	Denver ID Wall	897	6.5
	XA	6	EXISTING DSX1.2.LA164.FW on 8m Column	D-Series 1 Luminaire	17044	131

Description	Symbol	Avg	Min	Max/Avg
Spill		1 lux	0 lux	0.00
Unit 5 Parking		22 lux	9 lux	0.41
Unit 5 Pathway		10 lux	2 lux	0.20
Unit 6		14 lux	7 lux	0.30
Unit 6 Car Park		23 lux	14 lux	0.61
Unit 67 Pathway		23 lux	8 lux	0.36
Unit 6 Car Park		22 lux	14 lux	0.64
Unit 6 Pathway		23 lux	10 lux	0.42
Unit 7 Pathway		11 lux	5 lux	0.45
Unit 8 Parking		21 lux	9 lux	0.43
Unit 8 Pathway		23 lux	11 lux	0.48
Unit 8 Parking		28 lux	14 lux	0.50
Unit 8 Pathway		13 lux	5 lux	0.42
Unit 10 Parking		20 lux	10 lux	0.50
Unit 10 Pathway		10 lux	5 lux	0.50
Unit 1011 Pathway		12 lux	6 lux	0.50
Unit 10110 Parking		23 lux	11 lux	0.44
Unit 1102 Parking		23 lux	12 lux	0.52
Unit 13 Parking		21 lux	10 lux	0.48
Unit 13 Pathway		20 lux	5 lux	0.25
Unit 13 Pathway		11 lux	5 lux	0.45
Access Road		25 lux	7 lux	0.28



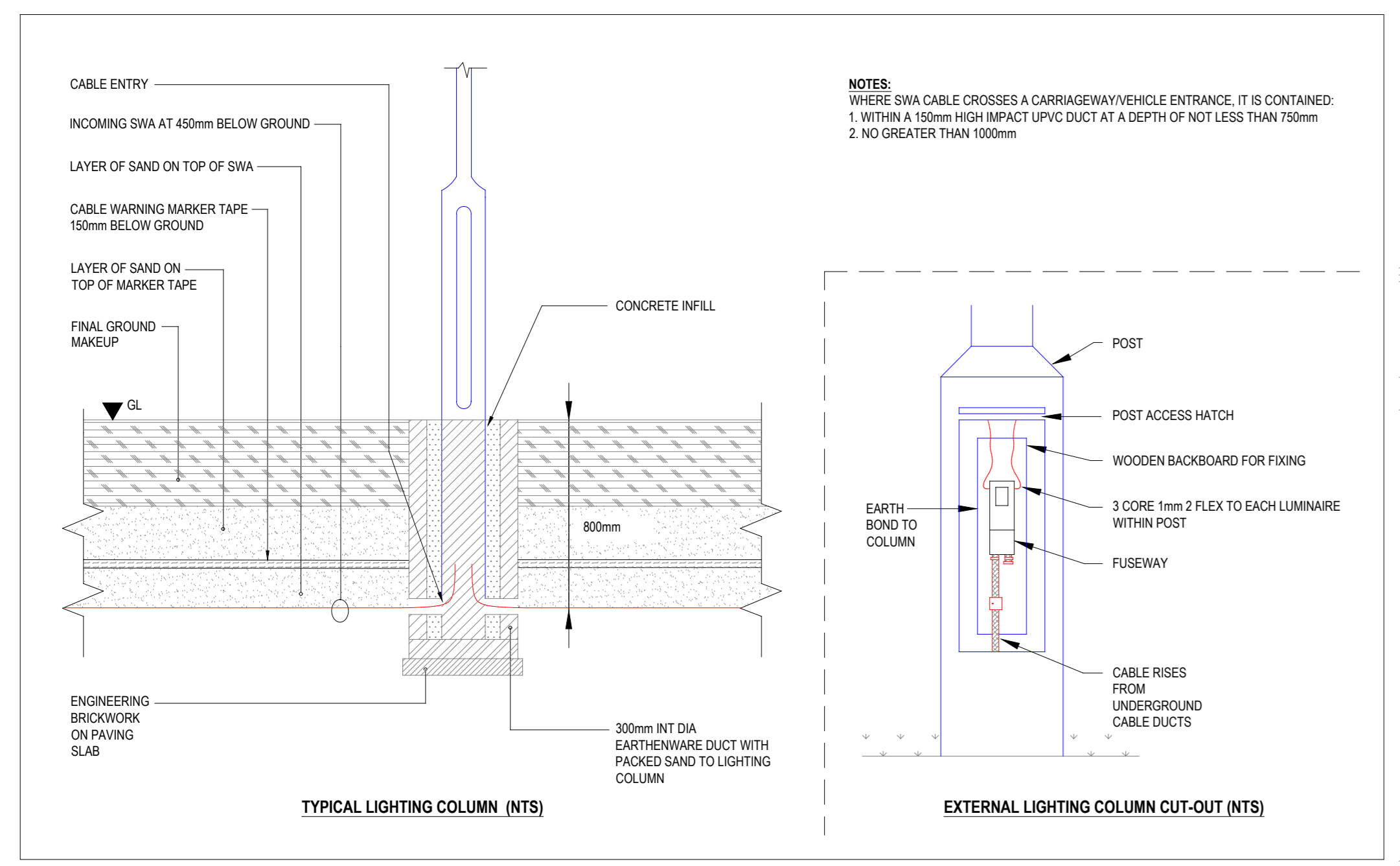
SOUTH EAST VIEW



© Engineering Services Consultancy Limited  
This drawing is copyright and must not be reproduced in part or whole without prior written consent.  
Contractors must verify all dimensions on site before commencing works.  
All works shall be coordinated with all other trades.

NO.	DESCRIPTION OF HAZARD	CONTROL MEASURES	ACTION BY
1	UNDEGROUND SERVICES AND LOCATIONS	IDENTIFICATION OF EXISTING UNDERGROUND SERVICES DRAWING AND CAT JOINING OF SERVICES	CONTRACTOR
		CAREFUL EXCAVATION USING SLOT TRENCHES AND CAT JOINING OF SERVICES	

- NOTES**
- THIS DRAWING SHALL BE READ IN CONJUNCTION WITH ALL OTHER ENGINEERING SERVICES CONSULTANCY LIMITED DRAWINGS.
  - THE EXTERNAL LIGHTING SHALL BE DESIGNED TO ENSURE THAT REQUIRED LIGHTING LEVELS ARE ACHIEVED WHILST MINIMISING GLARE AND LIGHT SPILLAGE TO THE SURROUNDING AREAS AND TO ENSURE THERE IS NO DIRECT CONTRIBUTION TO UPWARD LIGHT POLLUTION.
  - THE EXTERNAL LIGHTING SCHEME SHALL BE PROVIDED IN ACCORDANCE WITH THE LOCAL PLANNING AUTHORITIES REQUIREMENTS/RESTRICTIONS.
  - WHERE COLUMNS ARE POSITIONED NEAR TO NEIGHBORING PROPERTIES, OR LOCATED ON THE PERIMETER OF THE SITE, THEY SHALL BE COMPLETE WITH SUITABLE BACK-SHIELDS TO PREVENT LIGHT SPILL.
  - ALL COLUMNS SHALL HAVE A FLEXIBLE DUCT PASSING INTO THE BASE, THROUGH THE CONCRETE, TO ENSURE THAT FUTURE REWIRING OF THE CIRCUITS IS POSSIBLE.
  - WHERE LUMINAIRES ARE FIXED DIRECTLY TO THE EXTERNAL BUILDING FABRIC, THE LUMINAIRES SHALL BE THE SAME RAL COLOUR AS THE CLADDING PANELS. ALL LUMINAIRE FIXING BOLTS ETC. SHALL BE THE SAME COLOUR AS THE LUMINAIRE.
  - GENERALLY, THE COLUMNS SHALL BE GALVANISED STEEL CONSTRUCTION. THE ELECTRICAL CONTRACTOR SHALL LIASE WITH THE ARCHITECT TO ASCERTAIN THE RAL COLOUR OF THE COLUMNS. THE COLUMN HEADS SHALL MATCH THE RAL COLOUR OF THE COLUMN.
  - WHERE SERVICES NEED TO BE INSTALLED WITHIN DUCTS / TRENCHES, THE ELECTRICAL CONTRACTOR SHALL SUPPLY THE MAIN CONTRACTOR WITH DETAILS OF REQUIRED DUCT ROUTES AND DRAW PIT LOCATIONS.
  - DURING INSTALLATION OF THE EXTERNAL LIGHTING A DRAW WIRE SHALL BE PULLED THROUGH WITH THE CABLEING TO PROVIDE A MEANS OF INSTALLING FUTURE SERVICES.



P1 15.09.23 Issued for planning CP  
Rev. Date Details Initials  
Engineering Services Consultancy Ltd  
19 Ludgate Hill  
Birmingham  
B3 1DW  
T: 0121 214 8998  
F: 0121 214 9999  
W: www.escuk.com  
Client

Project  
**ALBION LAND**  
Catalyst Phase 2B

Drawing Title  
**External Lighting Layout**

Purpose  
**PLANNING**

Drawn DM Engineer CP Approved CP  
Project No. 1974 Date Sep2023 Scale @ A2 1:750  
Drawing No. 1974-ESC-00-ZZ-DR-E-2100 Revision P1

THIS DRAWING IS FOR INFORMATION ONLY TO DEMONSTRATE DESIGN INTENT AND REPRESENTS THE AGREED SERVICING STRATEGY AND MINIMUM STANDARDS TO BE ACHIEVED. WHERE ADDITIONAL DETAILS HAVE BEEN SHOWN, THIS HAS BEEN PROVIDED IN ORDER TO CONVEY GREATER UNDERSTANDING OF THE CONCEPTUAL REQUIREMENTS AND SHALL NOT BE TAKEN AS DETAILED DESIGN.

IT HAS NOT BEEN PRODUCED TO ACCURATE DESIGN CALCULATIONS AND SHALL NOT BE USED FOR INSTALLATION PURPOSES.

THE CONTRACTOR WILL BE RESPONSIBLE FOR THE DESIGN OF THE ENGINEERING SERVICES IN ACCORDANCE WITH THE DESIGN AND BUILD CONTRACT. PLANT SIZES ARE INDICATIVE AND THE CONTRACTOR SHALL BE FULLY RESPONSIBLE FOR THE DETAILED DESIGN OF ALL PLANT AND EQUIPMENT.

THIS DRAWING SHALL BE READ IN CONJUNCTION WITH ALL CONTRACT DOCUMENTS, PROJECT SPECIFICATIONS AND DRAWINGS.

10m SCALE 1:750