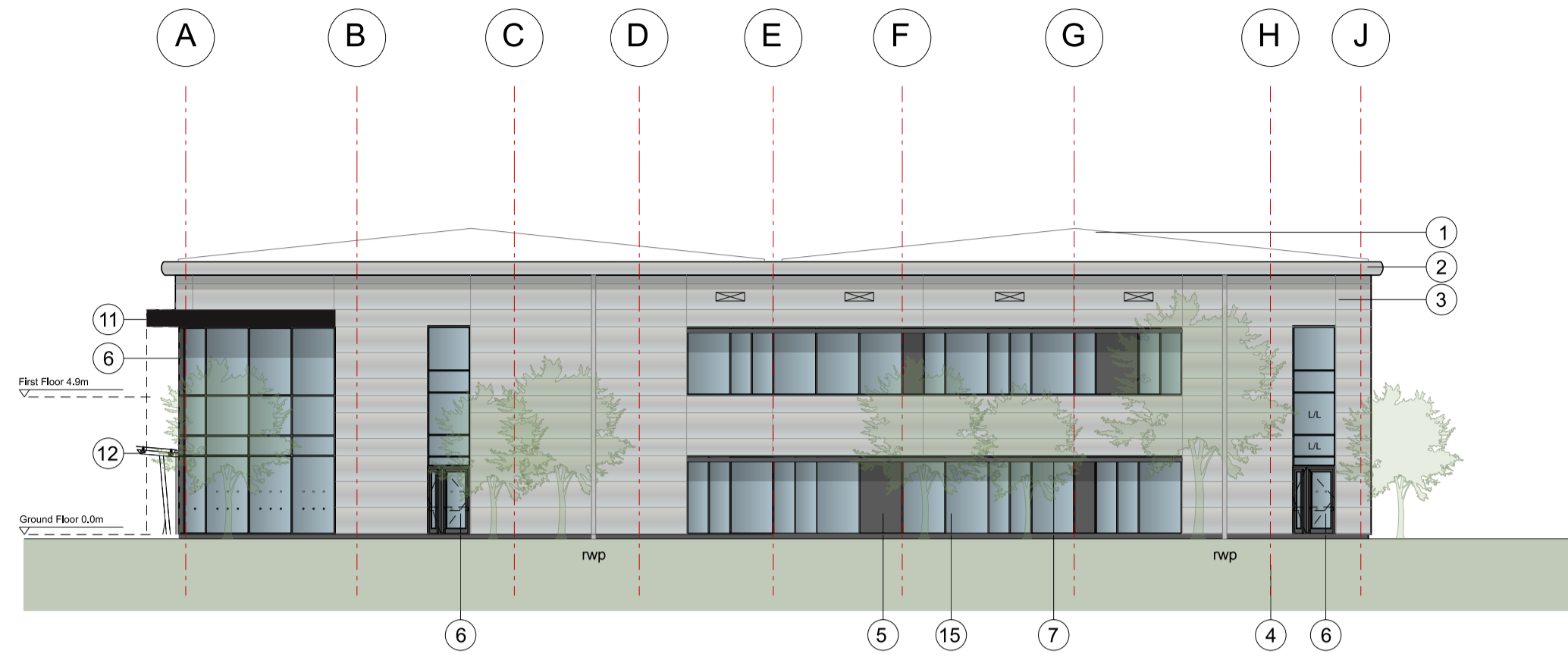
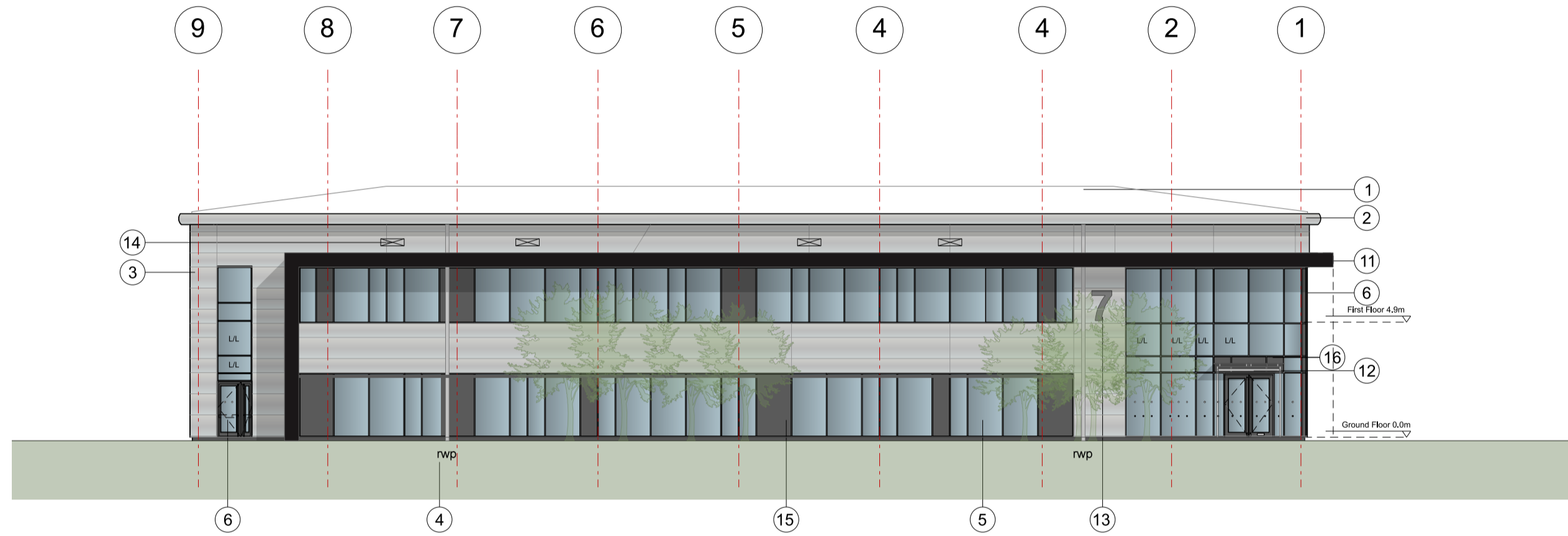


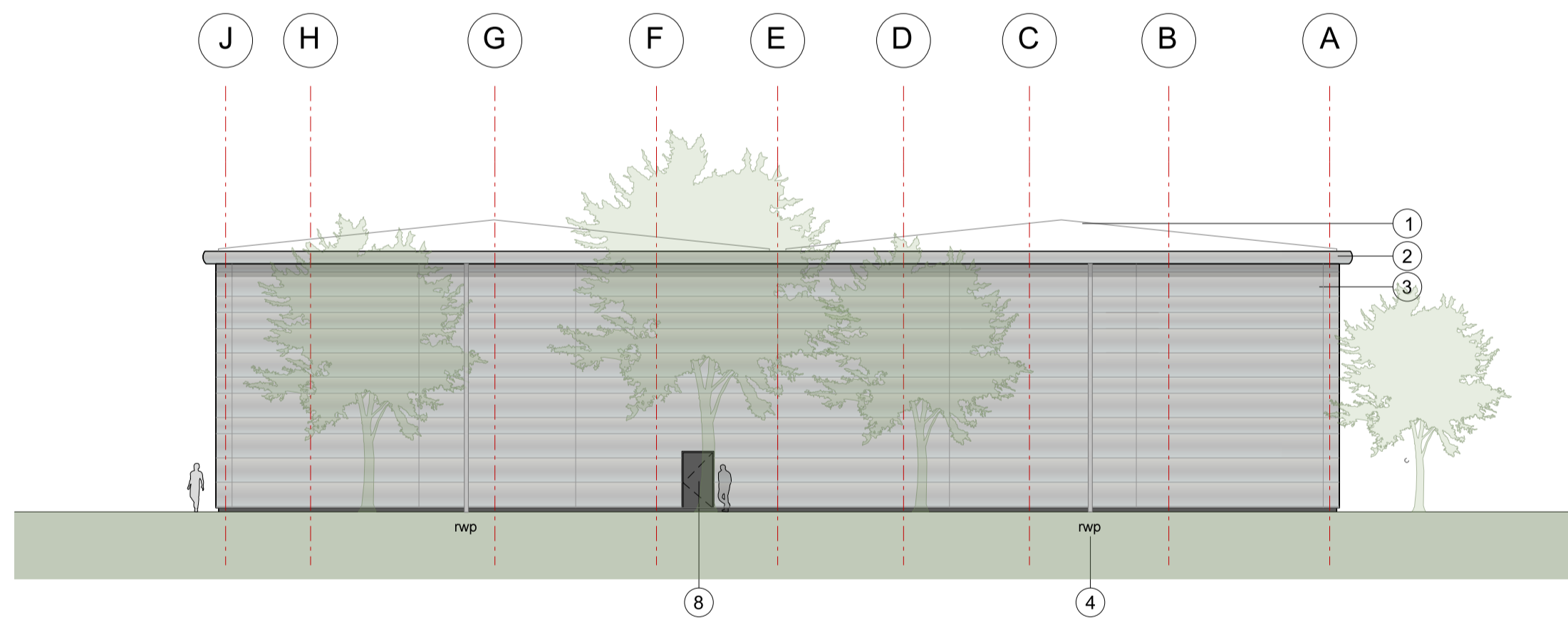
1  
012 Unit 7  
South West Elevation



2  
012 Unit 7  
North West Elevation



3  
012 Unit 7  
North East Elevation



4  
012 Unit 7  
South East Elevation



KEY	
1	Built-up metal roof system Colour: HPS200 Ultra Goosewing Grey RAL 7038
2	Eaves and verge flashings. Colour: Sirius
3	Horizontal Microrib composite panel system Colorcoat Prisma - Sirius RAL 9006
4	Rainwater pipes. Colour: Sirius RAL 9006
5	PPC Aluminium double glazed windows. Colour: Anthracite RAL 7016
6	PPC Aluminium double glazed curtain walling and door frames. Colour: Anthracite RAL 7016
7	Brise Soleil, colour to match window frame
8	Steel fire escape doors. Colour: Anthracite RAL 7016
9	Loading doors. Colour: Anthracite RAL 7016
10	Vertical Trapezoidal built-up cladding system - Corus Colorcoat Prisma - Zeus
11	Feature canopy, colour: Black
12	Freestanding glass canopy, colour: Anthracite
13	Unit number
14	Louvers - colour to match cladding (to M&E consultant specification)
15	Decorative coloured glass feature insulated cassettes
16	Aluminium panel, colour: Anthracite
L/L	Look-a-like panels - obscured glass

Rev	Description	Chk	Date
A	Window cassette arrangement updated to suit internal structural layout.	CB	14/09/2023

27 Greville Street  
London EC1N 8SU  
tel +44(0)20 7400 2120  
enquiries@cornisharchitects.com  
www.cornisharchitects.com



Project Title:  
**CATALYST BICESTER RM4**

Drawing Title:  
**UNIT 7 ELEVATIONS**

Drawing Status:  
**TOWN PLANNING**

Scale:  
0 2 metres 16

Drawn By: S K Scale: 1:200 @ A1 Date: 22/04/2022 Chk'd By: C S

ALBION LAND

Drawing No. 22011 - TP - 012 Rev. A