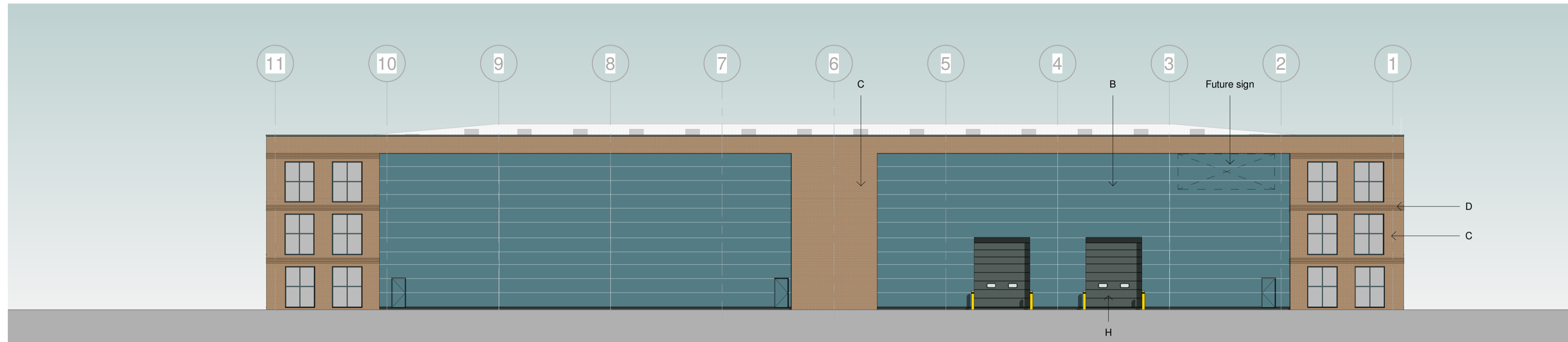
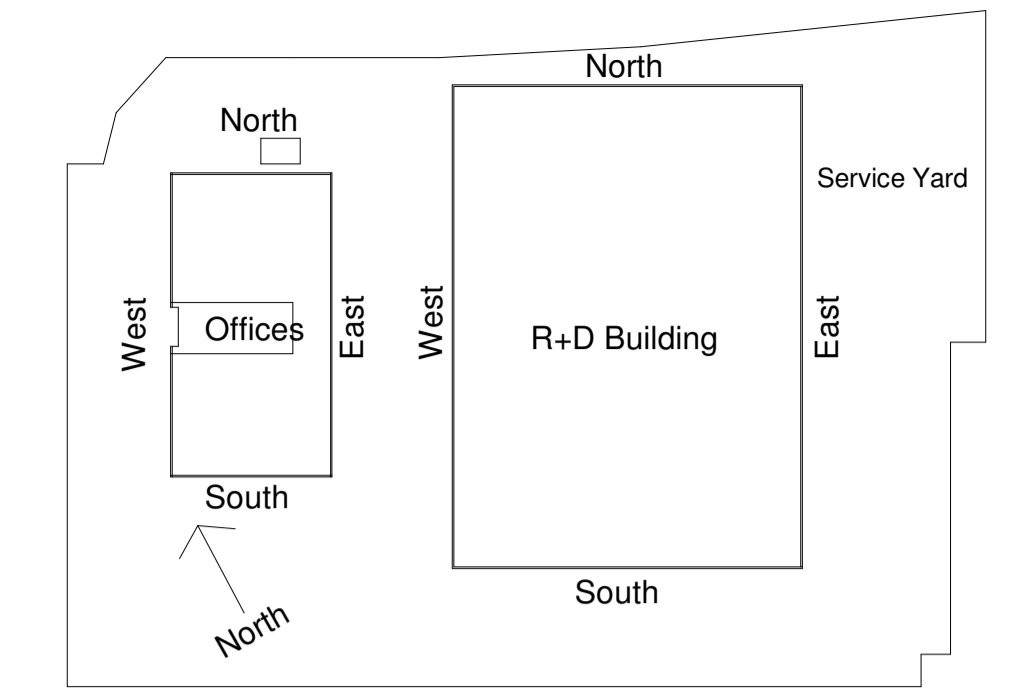
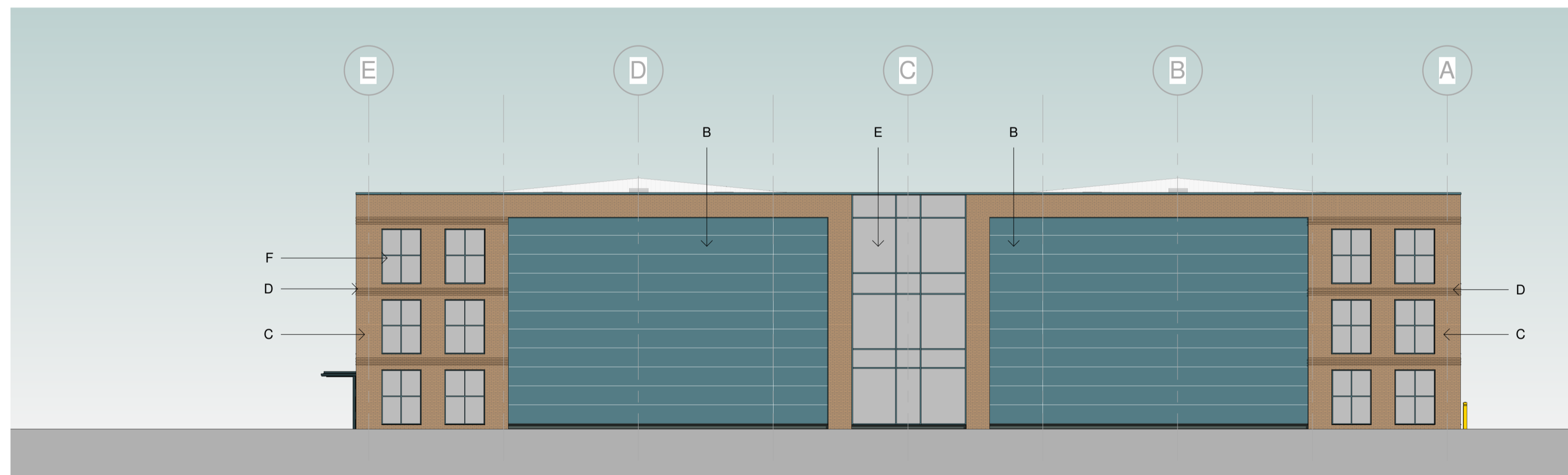


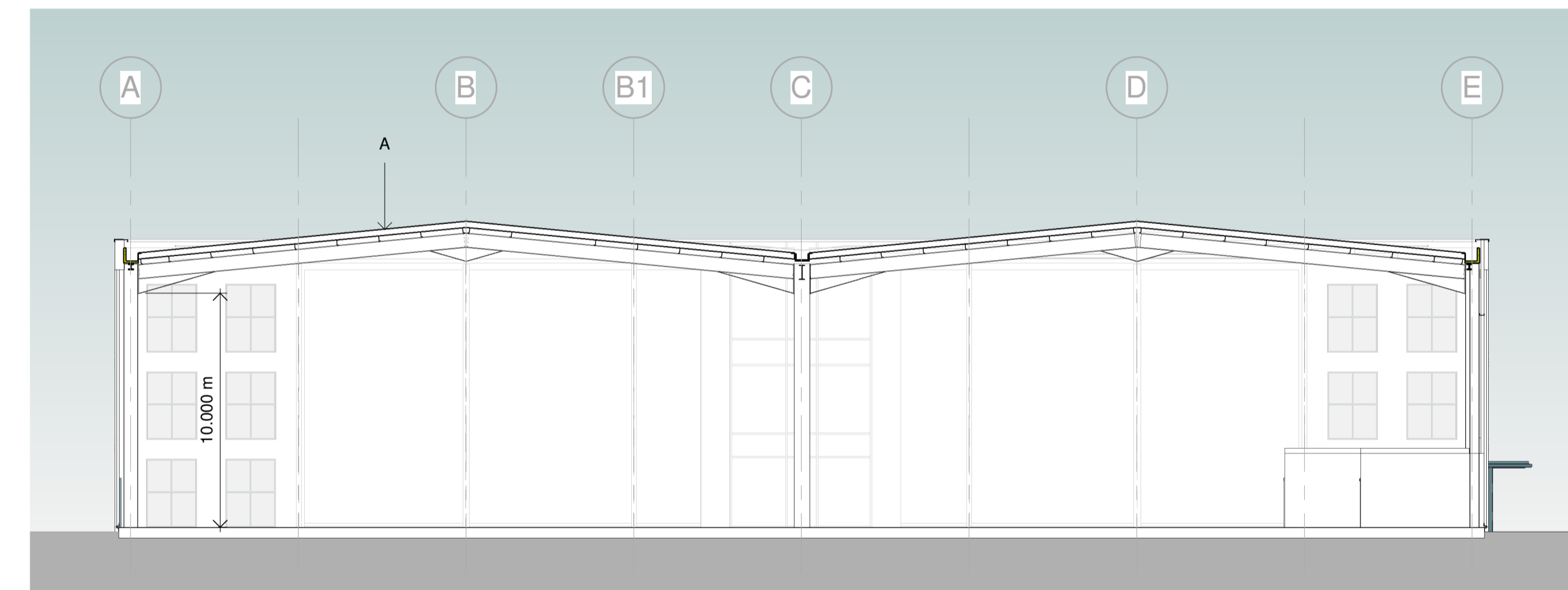
Elevation - West
1 : 200



Elevation - East
1 : 200



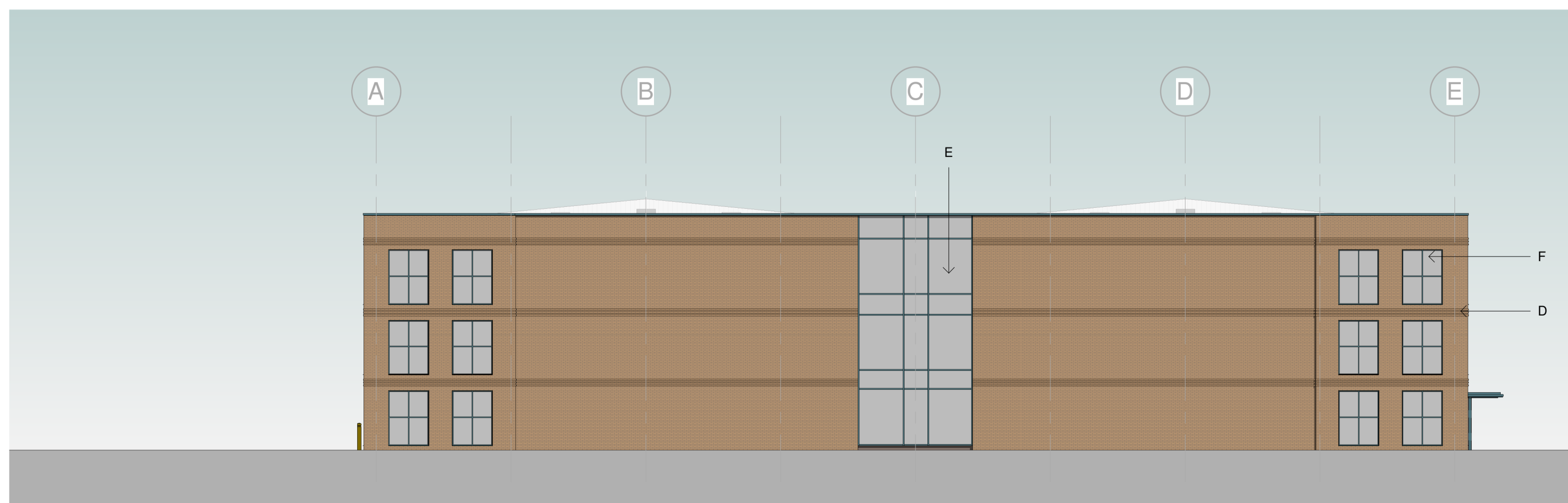
Elevation - South
1 : 200



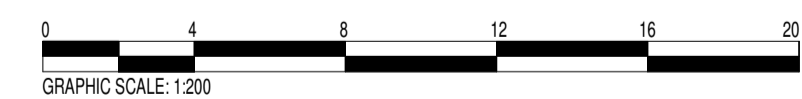
Section 1
1 : 200

MATERIALS:

- A. Roof Cladding - Insulated cladding with trapezoidal outer profile: Colour Goosewing Grey - 10% Rooflights
- B. Horizontal Cladding - Insulated Panel: Finish MicroRib Colour RAL 220 50 15
- C. Main brickwork: colour Buff
- D. Projecting stretcher brick courses: colour Buff
- E. PPC Aluminium curtain wall colour RAL 220 50 15. All glazing opaque except where noted with an asterisk *
- F. PPC Aluminium windows colour RAL 220 50 15. All glazing opaque.
- G. Canopy - Colour RAL 220 50 15
- H. Vehicle Doors - colour RAL 180 40 05



Elevation - North
1 : 200



PROJECT Bicester Arc - YASA - R&D	
TITLE ELEVATIONS & SECTION	

CLIENT Peveril Securities			
Drawn by SM	Checked by DW	Approved by SJ	DATE 15.01.2024
SCALE (@ A1) 1 : 200		PROJECT NUMBER 16SK109	
DRAWING NUMBER B102			REV G