

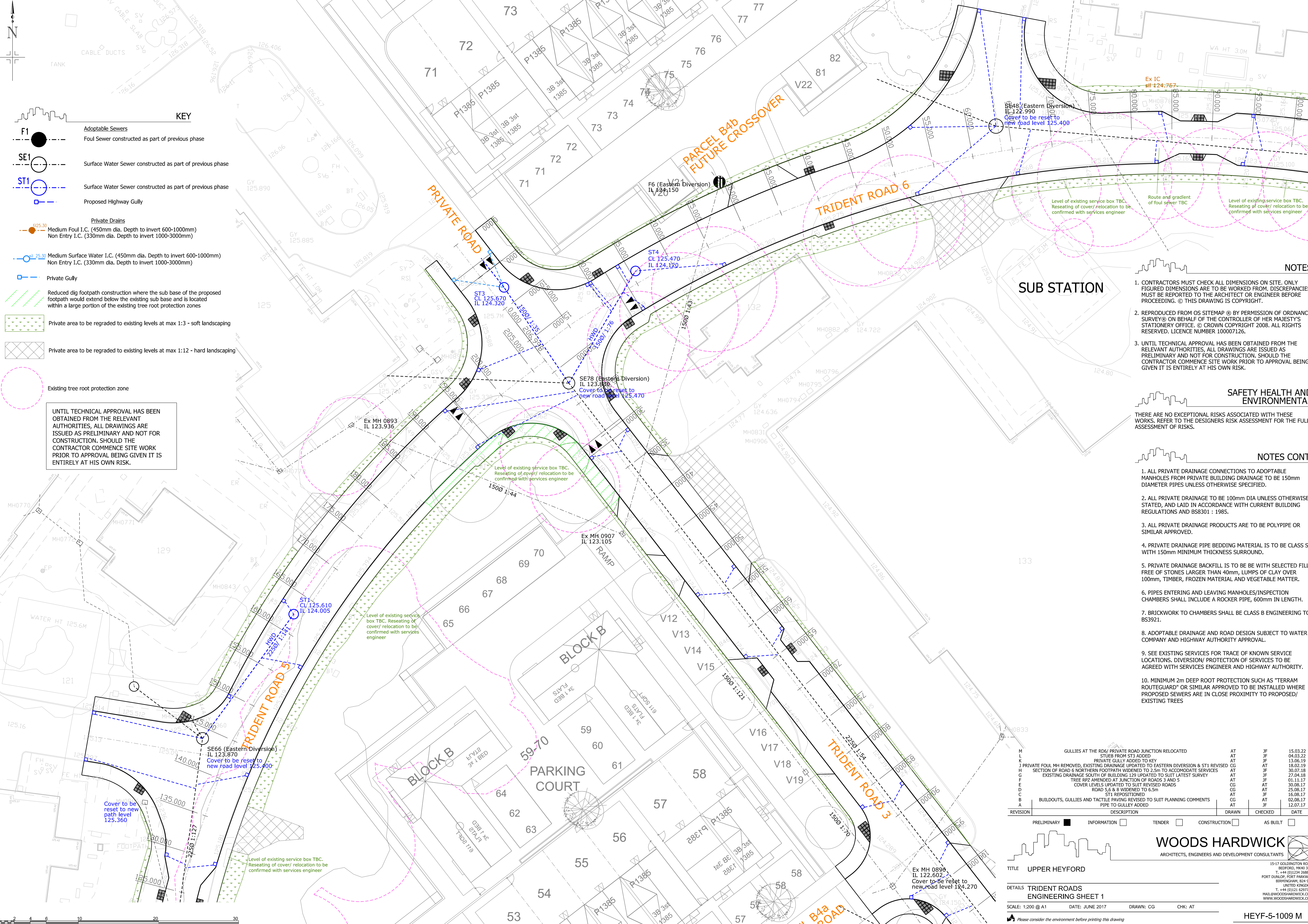
- KEY**
- F1** Adoptable Sewers
 - SE1** Foul Sewer constructed as part of previous phase
 - ST1** Surface Water Sewer constructed as part of previous phase
 - Proposed Highway Gully

- Private Drains**
- Medium Foul I.C. (450mm dia. Depth to invert 600-1000mm)
 - Non Entry I.C. (330mm dia. Depth to invert 1000-3000mm)
 - Medium Surface Water I.C. (450mm dia. Depth to invert 600-1000mm)
 - Non Entry I.C. (330mm dia. Depth to invert 1000-3000mm)
 - Private Gully

- Reduced dig footprint construction where the sub base of the proposed footprint would extend below the existing sub base and is located within a large portion of the existing tree root protection zones
- Private area to be regraded to existing levels at max 1:3 - soft landscaping
- Private area to be regraded to existing levels at max 1:12 - hard landscaping

- Existing tree root protection zone

UNTIL TECHNICAL APPROVAL HAS BEEN OBTAINED FROM THE RELEVANT AUTHORITIES, ALL DRAWINGS ARE ISSUED AS PRELIMINARY AND NOT FOR CONSTRUCTION. SHOULD THE CONTRACTOR COMMENCE SITE WORK PRIOR TO APPROVAL BEING GIVEN IT IS ENTIRELY AT HIS OWN RISK.



NOTES

1. CONTRACTORS MUST CHECK ALL DIMENSIONS ON SITE. ONLY FIGURED DIMENSIONS ARE TO BE WORKED FROM. DISCREPANCIES MUST BE REPORTED TO THE ARCHITECT OR ENGINEER BEFORE PROCEEDING. © THIS DRAWING IS COPYRIGHT.
2. REPRODUCED FROM OS SITEMAP © BY PERMISSION OF ORDNANCE SURVEY © ON BEHALF OF THE CONTROLLER OF HER MAJESTY'S STATIONERY OFFICE. © CROWN COPYRIGHT 2008. ALL RIGHTS RESERVED. LICENCE NUMBER 100007126.
3. UNTIL TECHNICAL APPROVAL HAS BEEN OBTAINED FROM THE RELEVANT AUTHORITIES, ALL DRAWINGS ARE ISSUED AS PRELIMINARY AND NOT FOR CONSTRUCTION. SHOULD THE CONTRACTOR COMMENCE SITE WORK PRIOR TO APPROVAL BEING GIVEN IT IS ENTIRELY AT HIS OWN RISK.

SAFETY HEALTH AND ENVIRONMENTAL

THERE ARE NO EXCEPTIONAL RISKS ASSOCIATED WITH THESE WORKS. REFER TO THE DESIGNERS RISK ASSESSMENT FOR THE FULL ASSESSMENT OF RISKS.

NOTES CONT.

1. ALL PRIVATE DRAINAGE CONNECTIONS TO ADOPTABLE MANHOLES FROM PRIVATE BUILDING DRAINAGE TO BE 150mm DIAMETER PIPES UNLESS OTHERWISE SPECIFIED.
2. ALL PRIVATE DRAINAGE TO BE 100mm DIA UNLESS OTHERWISE STATED, AND LAID IN ACCORDANCE WITH CURRENT BUILDING REGULATIONS AND BS8301 : 1985.
3. ALL PRIVATE DRAINAGE PRODUCTS ARE TO BE POLYPIPE OR SIMILAR APPROVED.
4. PRIVATE DRAINAGE PIPE BEDDING MATERIAL IS TO BE CLASS 5 WITH 150mm MINIMUM THICKNESS SURROUND.
5. PRIVATE DRAINAGE BACKFILL IS TO BE WITH SELECTED FILL FREE OF STONES LARGER THAN 40mm, LUMPS OF CLAY OVER 100mm, TIMBER, FROZEN MATERIAL AND VEGETABLE MATTER.
6. PIPES ENTERING AND LEAVING MANHOLES/INSPECTION CHAMBERS SHALL INCLUDE A ROCKER PIPE, 600mm IN LENGTH.
7. BRICKWORK TO CHAMBERS SHALL BE CLASS B ENGINEERING TO BS3921.
8. ADOPTABLE DRAINAGE AND ROAD DESIGN SUBJECT TO WATER COMPANY AND HIGHWAY AUTHORITY APPROVAL.
9. SEE EXISTING SERVICES FOR TRACE OF KNOWN SERVICE LOCATIONS. DIVERSION/ PROTECTION OF SERVICES TO BE AGREED WITH SERVICES ENGINEER AND HIGHWAY AUTHORITY.
10. MINIMUM 2m DEEP ROOT PROTECTION SUCH AS "TERRAM ROUTEGUARD" OR SIMILAR APPROVED TO BE INSTALLED WHERE PROPOSED SEWERS ARE IN CLOSE PROXIMITY TO PROPOSED/ EXISTING TREES

REVISION	DESCRIPTION	DRAWN	CHECKED	DATE
M	GULLIES AT THE RD6/ PRIVATE ROAD JUNCTION RELOCATED	AT	JF	15.03.22
L	STUBS FROM ST3 ADDED	AT	JF	04.03.22
K	PRIVATE GULLY ADDED TO KEY	AT	JF	13.06.19
J	PRIVATE FOUL MH REMOVED. EXISTING DRAINAGE UPDATED TO EASTERN DIVERSION & ST1 REVISED	AT	AT	18.02.19
H	SECTION OF ROAD 6 NORTHERN FOOTPATH WIDENED TO 2.5m TO ACCOMMODATE SERVICES	AT	JF	30.07.18
G	EXISTING DRAINAGE SOUTH OF BUILDING 129 UPDATED TO SUIT LATEST SURVEY	AT	JF	27.04.18
F	TREE RPS AMENDED AT JUNCTION OF ROADS 3 AND 5	AT	JF	01.11.17
E	COVER LEVELS UPDATED TO SUIT REVISED ROADS	CG	AT	30.08.17
D	ROAD 5, 6 & 8 WIDENED TO 6.5m	CG	AT	25.08.17
C	ST1 REPOSITIONED	AT	JF	16.08.17
B	BUILDOUTS, GULLIES AND TACTILE PAVING REVISED TO SUIT PLANNING COMMENTS	CG	AT	02.08.17
A	PIPE TO GULLY ADDED	AT	JF	12.07.17

WOODS HARDWICK
ARCHITECTS, ENGINEERS AND DEVELOPMENT CONSULTANTS

15-17 GOLDINGTON ROAD
BEDFORD, MK40 3NH
T: +44 (0)1234 268662
F: +44 (0)1234 268662
FORT DUNLOP, FORT PARKWAY
BIRMINGHAM, B24 9PE
UNITED KINGDOM
T: +44 (0)121 6297794
MAIL@WOODSHARDWICK.COM
WWW.WOODSHARDWICK.COM

TITLE: UPPER HEYFORD

DETAILS: TRIDENT ROADS
ENGINEERING SHEET 1

SCALE: 1:200 @ A1 DATE: JUNE 2017 DRAWN: CG CHK: AT

HEYF-5-1009 M

Please consider the environment before printing this drawing
Filepath: F:\Engineer