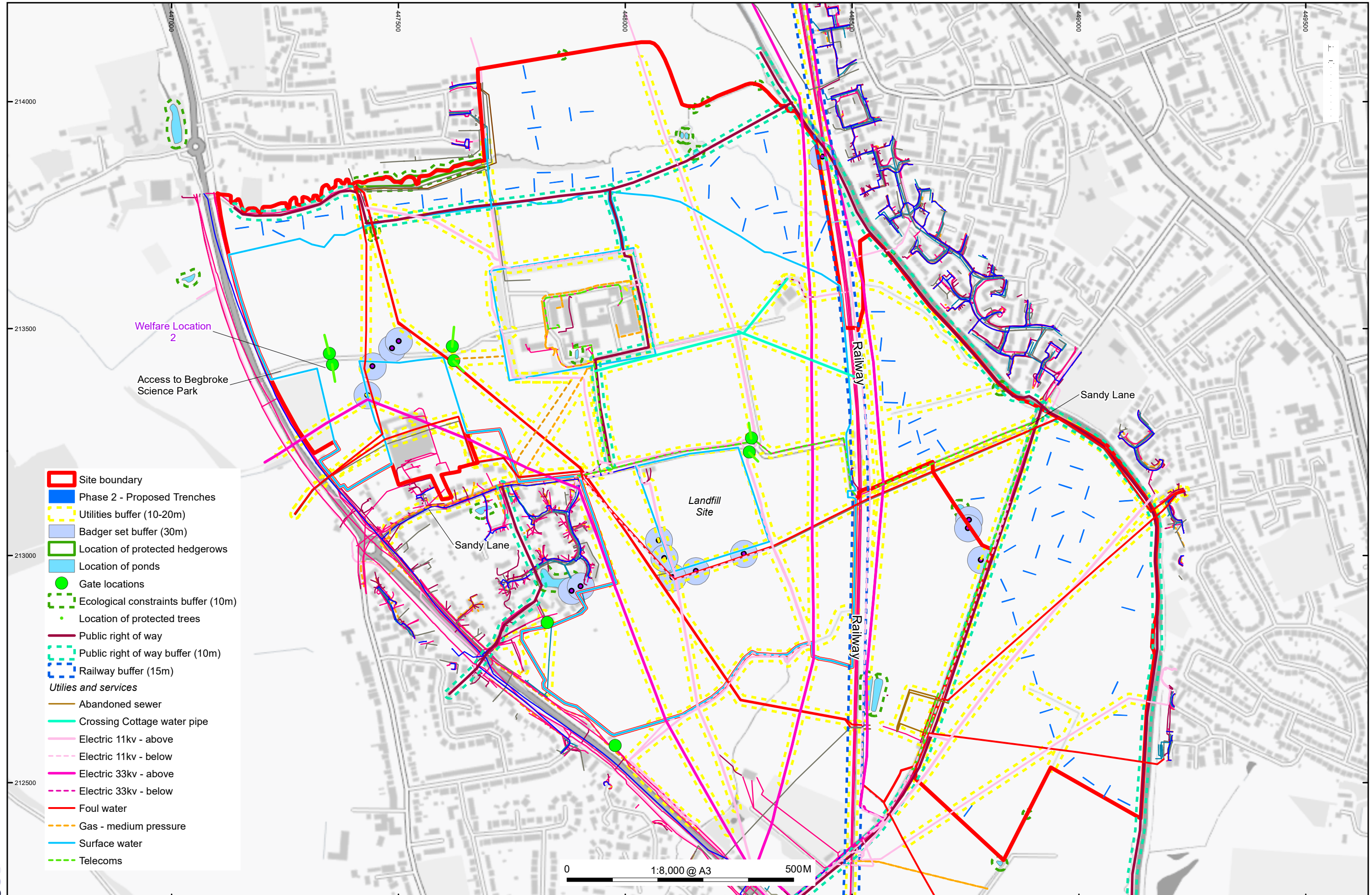


X:\b1\BEGBRKGE_Begbroke_Oxfordshire_University_Developments\Geomatics\02_GIS\Projects\Figures\2023-03-23_WSI_Phase2\BEGBRKGE_2023-03-23_WSI_Figure_8.mxd\caroline.souday\08/06/2023



- ▭ Site boundary
- ▭ Phase 2 - Proposed Trenches
- - - Utilities buffer (10-20m)
- ▭ Badger set buffer (30m)
- ▭ Location of protected hedgerows
- ▭ Location of ponds
- Gate locations
- - - Ecological constraints buffer (10m)
- Location of protected trees
- ▭ Public right of way
- - - Public right of way buffer (10m)
- - - Railway buffer (15m)
- Utilities and services*
- ▭ Abandoned sewer
- ▭ Crossing Cottage water pipe
- ▭ Electric 11kv - above
- - - Electric 11kv - below
- ▭ Electric 33kv - above
- - - Electric 33kv - below
- ▭ Foul water
- ▭ Gas - medium pressure
- ▭ Surface water
- - - Telecoms

0 1:8,000 @ A3 500M

Contains OS data © Crown Copyright and database right 2020

Figure 8: Detail plan of floodplain trench layout with no geophysical survey plot



**Head Office/Registered Office/
OA South**

Janus House
Osney Mead
Oxford OX2 0ES

t: +44 (0) 1865 263 800
f: +44 (0) 1865 793 496
e: info@oxfordarchaeology.com
w: <http://oxfordarchaeology.com>

OA North

Mill 3
Moor Lane
Lancaster LA1 1QD

t: +44 (0) 1524 541 000
f: +44 (0) 1524 848 606
e: [oanorth@oxfordarchaeology.com](mailto: oanorth@oxfordarchaeology.com)
w: <http://oxfordarchaeology.com>

OA East

15 Trafalgar Way
Bar Hill
Cambridgeshire
CB23 8SQ

t: +44 (0) 1223 850500
e: [oaeast@oxfordarchaeology.com](mailto: oaeast@oxfordarchaeology.com)
w: <http://oxfordarchaeology.com>



Chief Executive Officer
Ken Welsh, BSc, MCIFA
Oxford Archaeology Ltd is a
Private Limited Company, N^o: 1618597
and a Registered Charity, N^o: 285627