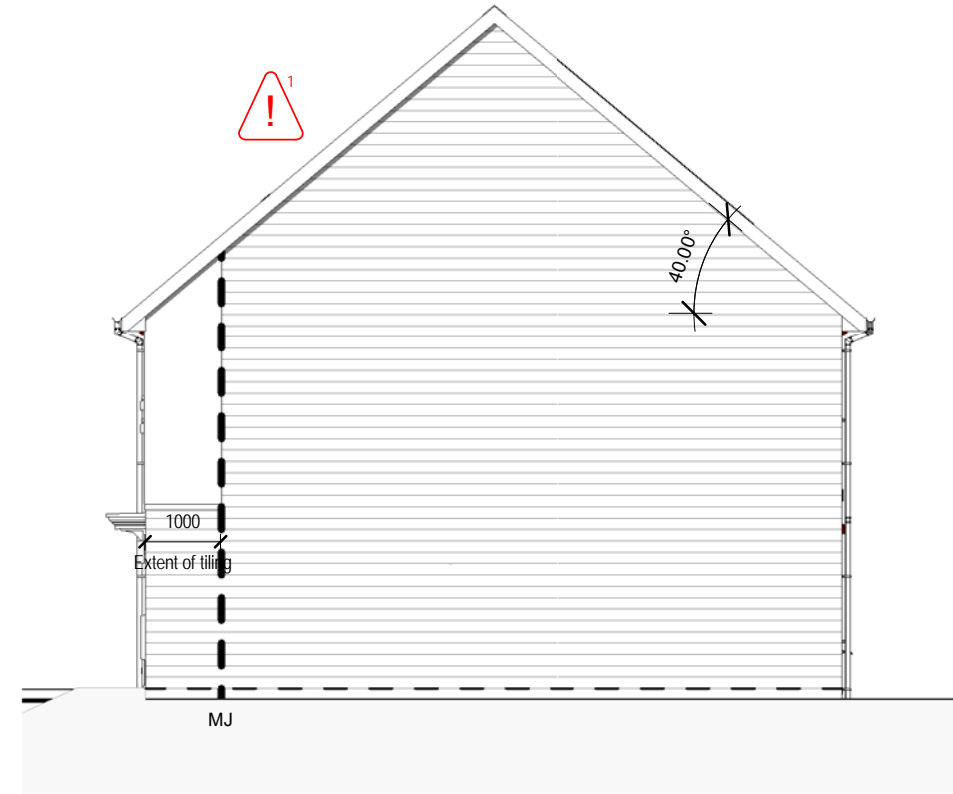
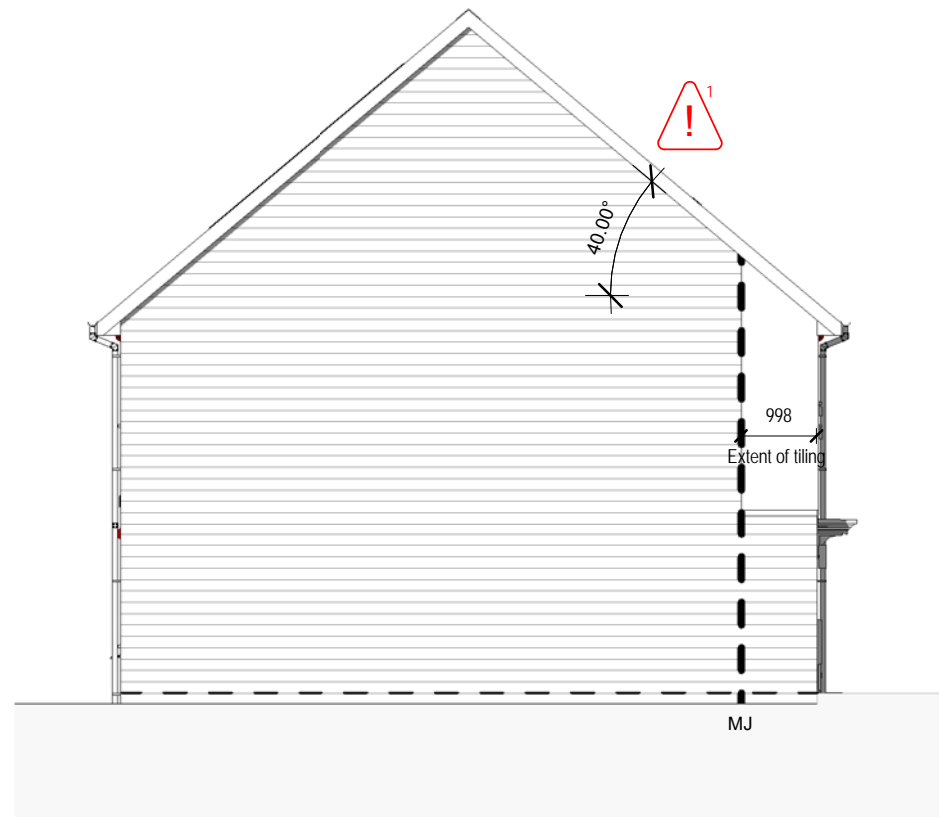


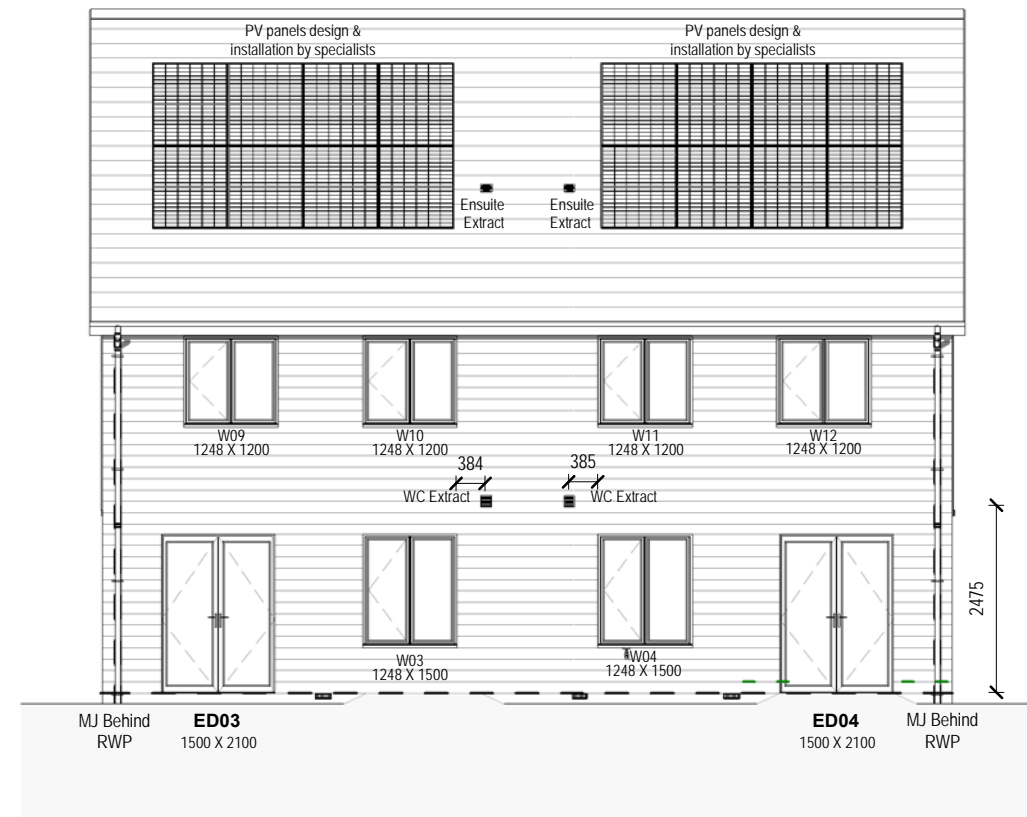
Front Elevation
1: 100



Right Elevation
1: 100



Left Elevation
1: 100



Rear Elevation
1: 100

This Working Drawing is to be Read in Conjunction with the Crest Standard Construction Notes and the Standard Workmanship & Materials Specification



CN Construction Notes



CN Standard Details



Structural Engineers Design

Background Ventilation

Design permeability >5 m² / (h.m²) at 50Pa in accordance to Table 5.2a-B
Total Background ventilation required = 75,000mm²

General Notes:

Refer to Terrace Sets and External Materials Schedule for External Finishes

For Coursing Rod & Setting out of standard openings refer to CNSD-2018-001

Setting out dimensions to service terminals are to centre of extracts

- DPC
- Secondary DPC where FGL is less than 150mm lower than FFL
- Movement Joint
- Ancon AMR/S/D3.0/W60 or similar approved ladder bed joint reinforcement to be provided above and below all window openings: should extend for a minimum of 600mm beyond the reveal of the opening.

RISK
Gable Spandrel Panels
-Fall from height
-Crushing

Spandrel panels should be lifted and handled in accordance with the manufacturers guidance. Spandrel panels require lateral restraint at rafter level and along the base of the panel. In addition, tall panels may require further restraint. Both temporary and final installation / fixings to be in accordance with the manufacturers guidance.

Movement joints, bed joint reinforcement & PV panels added in.	13/05/22	HL	RC	T2
Tender issue	26/11/21	HL	RC	T1
REVISIONS	DATE	DRN	CKD	REV

Drawing Status: **TENDER**

Crest Nicholson Ltd.
Crest House
Pycroft Road
Chertsey
Surrey
KT16 9GN

Tel: 01931 580 555
Fax: 08703 363 990
www.crestnicholson.com

Project Name	Bicester Replan		
Title	Elevation	Unit Size	- Sqft
House Type	Plots 2-3		
Scale	As indicated @ A3	Date	12/11/21
Drawn	SAS	Checked	RC

Drawing No. **54790/HGP/P02-03/A/1020** Revision **T2**