



This Working Drawing is to be Read in Conjunction with the Crest Standard Construction Notes and the Standard Workmanship & Materials Specification



CN Construction Notes



CN Standard Details



Structural Engineers Design

Background Ventilation

Design permeability >5 m² / (h.m²) at 50Pa in accordance to Table 5.2a-B
Total Background ventilation required = 75,000mm²

General Notes:

Refer to Terrace Sets and External Materials Schedule for External Finishes

For Coring Rod & Setting out of standard openings refer to CNSD-2018-001

Setting out dimensions to service terminals are to centre of extracts

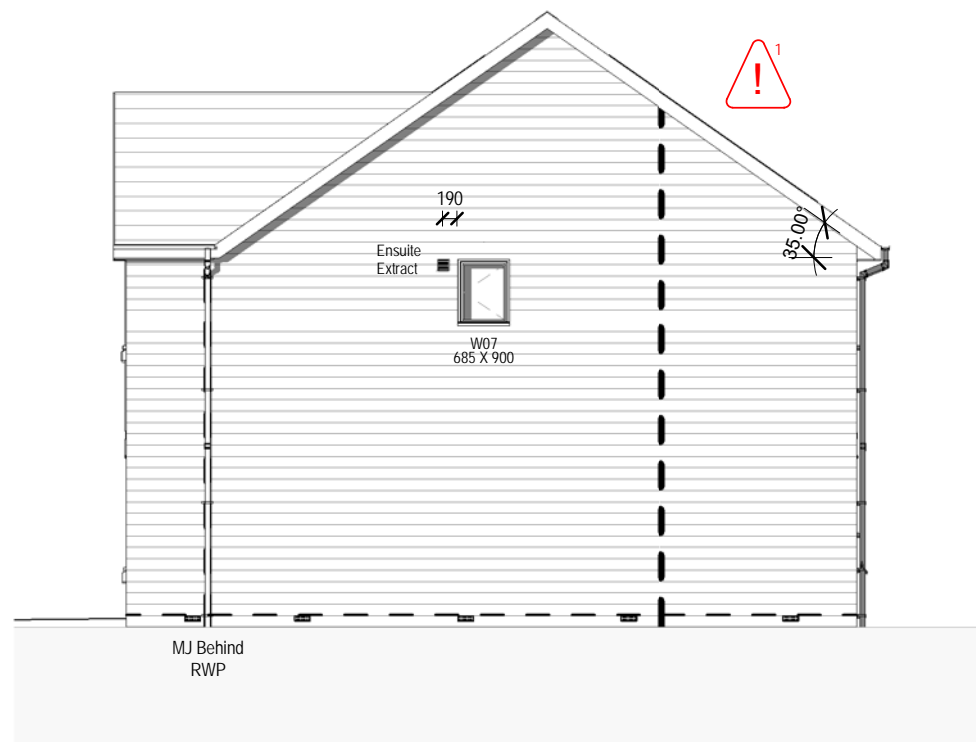
- DPC
- Secondary DPC where FGL is less than 150mm lower than FFL
- Movement Joint

RISK
Gable Spandrel Panels
-Fall from height
-Crushing

Spandrel panels should be lifted and handled in accordance with the manufacturers guidance. Spandrel panels require lateral restraint at rafter level and along the base of the panel. In addition, tall panels may require further restraint. Both temporary and final installation / fixings to be in accordance with the manufacturers guidance.



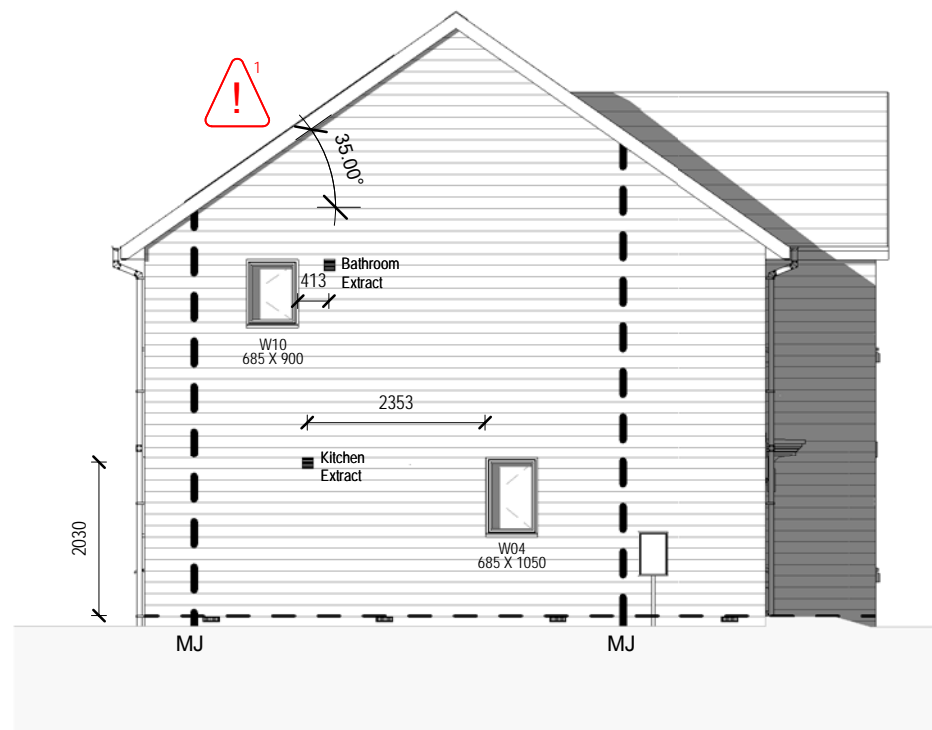
Front Elevation Stone
1: 100



Right Elevation Stone
1: 100



Rear Elevation Stone
1: 100



Left Elevation Stone
1: 100

Movement joints, bed joint reinforcement & PV panels added in.	16/05/22	HL	RC	T2
Tender issue	26/11/21	HL	RC	T1
REVISIONS	DATE	DRN	CKD	REV

Drawing Status: **TENDER**

Crest Nicholson Ltd.
Crest House
Pycroft Road
Chertsey
Surrey
KT16 9GN

Tel: 01931 580 555
Fax: 08703 363 990
www.crestnicholson.com

Project Name: Bicester Replan		Unit Size: 1375 Sqft
Title: Elevation - Type 3		
House Type: Dartford (4B8P 1375)		
Scale: As indicated @ A3	Date: 11/16/21	
Drawn: Author	Checked: Checker	
Drawing No.: 54790-HGP-DAR-A-1021	Revision: T2	

TYPE 3
PLOT NUMBERS:
AS:
OPP: 1, 32