



This Working Drawing is to be Read in Conjunction with the Crest Standard Construction Notes and the Standard Workmanship & Materials Specification



CN Construction Notes



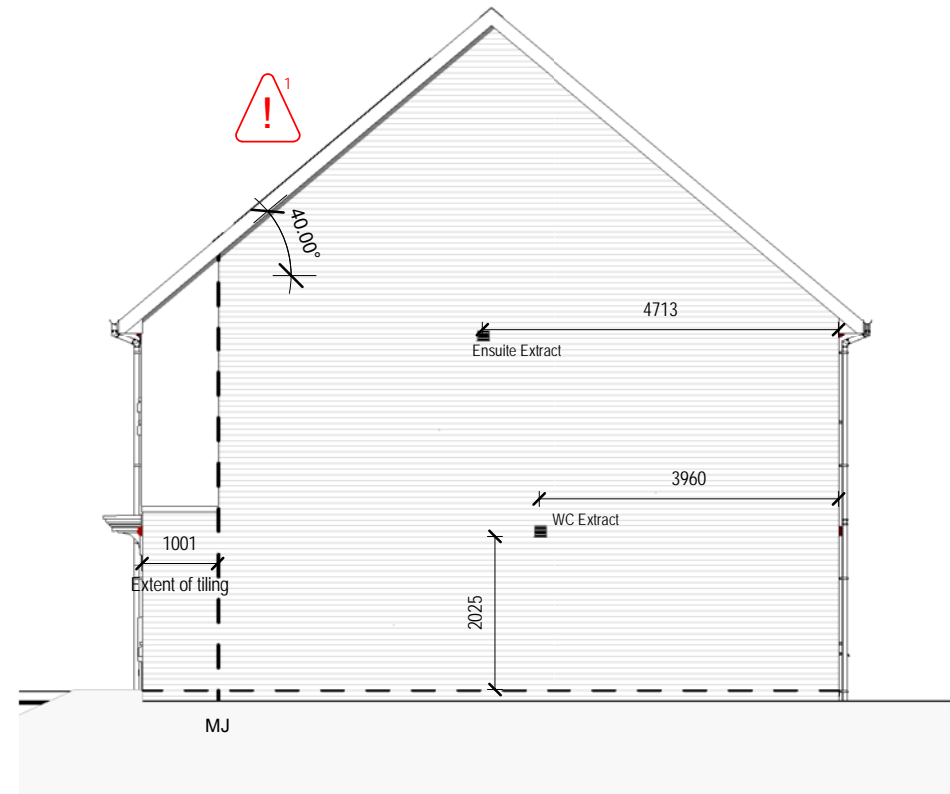
CN Standard Details



Structural Engineers Design



Front Elevation  
1: 100



Right Elevation  
1: 100

Background Ventilation

Design permeability >5 m<sup>2</sup> / (h.m<sup>2</sup>) at 50Pa in accordance to Table 5.2a-B  
Total Background ventilation required = 75,000mm<sup>2</sup>

General Notes:

Refer to Terrace Sets and External Materials Schedule for External Finishes

For Coring Rod & Setting out of standard openings refer to CNSD-2018-001

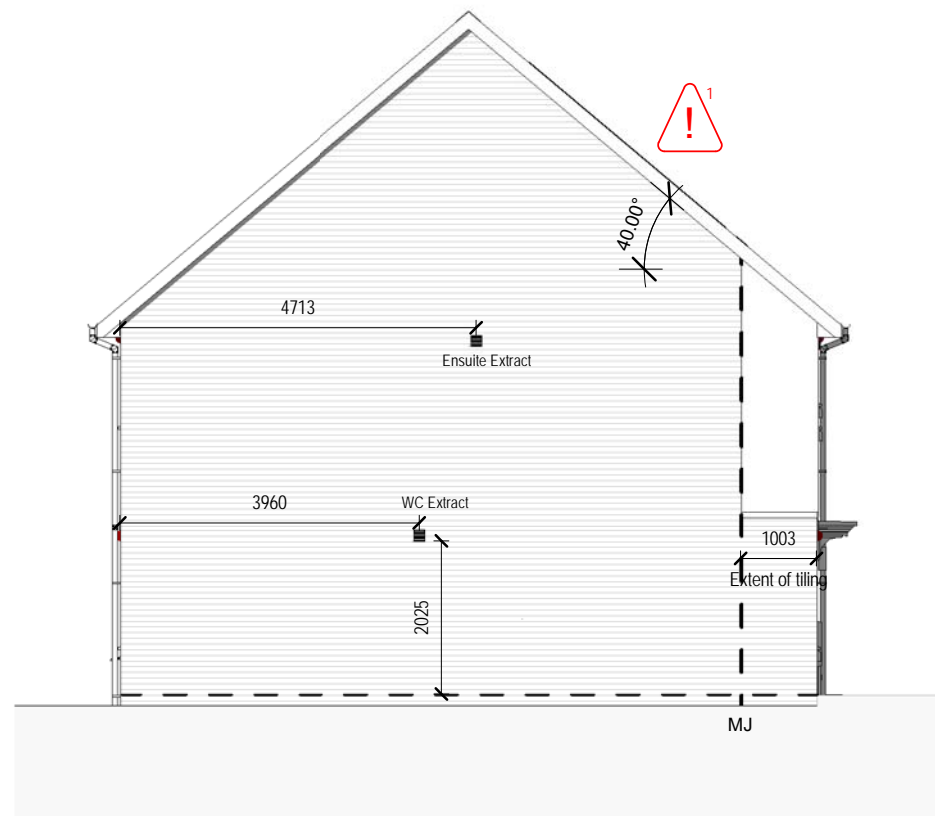
Setting out dimensions to service terminals are to centre of extracts

- DPC
- Secondary DPC where FGL is less than 150mm lower than FFL
- Movement Joint

Ancon AMR/S/D3.0/W60 or similar approved ladder bed joint reinforcement to be provided above and below all window openings: should extend for a minimum of 600mm beyond the reveal of the opening.

**RISK**  
Gable Spandrel Panels  
-Fall from height  
-Crushing

Spandrel panels should be lifted and handled in accordance with the manufacturers guidance. Spandrel panels require lateral restraint at rafter level and along the base of the panel. In addition, tall panels may require further restraint. Both temporary and final installation / fixings to be in accordance with the manufacturers guidance.



Left Elevation  
1: 100



Rear Elevation  
1: 100

Movement joints, bed joint reinforcement & PV panels added in.	13/05/22	HL	RC	T2
Tender issue	26/11/21	HL	RC	T1
REVISIONS	DATE	DRN	CKD	REV

Drawing Status: **TENDER**

**Crest Nicholson Ltd.**  
Crest House  
Pycroft Road  
Chertsey  
Surrey  
KT16 9GN  
Tel: 01931 580 555  
Fax: 08703 363 990  
www.crestnicholson.com

Project Name	Bicester Replan		
Title	Elevation	Unit Size	- Sqft
House Type	Plots 23-24, 25-26		
Scale	As indicated @ A3	Date	12/11/21
Drawn	SAS	Checked	RC

Drawing No. **54790/HGP/P23-26/A/1020** Revision **T2**

**PLOT NUMBERS**  
AS: 23, 25  
OPP: 24, 26