

1.1 Planting shall be set out exactly as shown on the drawings and measured from existing ground level. The drawings shall be set out using grid coordinates on the ground using two parallel lines and a line between, or with grid lines, to ensure that the planting is set out to the correct location. The contractor shall ensure that the planting is set out to the correct location and that the planting is set out to the correct location.

1.2 Setting out

1.3 All planting shall be set out exactly as shown on the drawings and measured from existing ground level. The drawings shall be set out using grid coordinates on the ground using two parallel lines and a line between, or with grid lines, to ensure that the planting is set out to the correct location. The contractor shall ensure that the planting is set out to the correct location and that the planting is set out to the correct location.

1.4 All planting shall be set out exactly as shown on the drawings and measured from existing ground level. The drawings shall be set out using grid coordinates on the ground using two parallel lines and a line between, or with grid lines, to ensure that the planting is set out to the correct location. The contractor shall ensure that the planting is set out to the correct location and that the planting is set out to the correct location.

1.5 All planting shall be set out exactly as shown on the drawings and measured from existing ground level. The drawings shall be set out using grid coordinates on the ground using two parallel lines and a line between, or with grid lines, to ensure that the planting is set out to the correct location. The contractor shall ensure that the planting is set out to the correct location and that the planting is set out to the correct location.

1.6 All planting shall be set out exactly as shown on the drawings and measured from existing ground level. The drawings shall be set out using grid coordinates on the ground using two parallel lines and a line between, or with grid lines, to ensure that the planting is set out to the correct location. The contractor shall ensure that the planting is set out to the correct location and that the planting is set out to the correct location.

1.7 All planting shall be set out exactly as shown on the drawings and measured from existing ground level. The drawings shall be set out using grid coordinates on the ground using two parallel lines and a line between, or with grid lines, to ensure that the planting is set out to the correct location. The contractor shall ensure that the planting is set out to the correct location and that the planting is set out to the correct location.

1.8 All planting shall be set out exactly as shown on the drawings and measured from existing ground level. The drawings shall be set out using grid coordinates on the ground using two parallel lines and a line between, or with grid lines, to ensure that the planting is set out to the correct location. The contractor shall ensure that the planting is set out to the correct location and that the planting is set out to the correct location.

1.9 All planting shall be set out exactly as shown on the drawings and measured from existing ground level. The drawings shall be set out using grid coordinates on the ground using two parallel lines and a line between, or with grid lines, to ensure that the planting is set out to the correct location. The contractor shall ensure that the planting is set out to the correct location and that the planting is set out to the correct location.

1.10 All planting shall be set out exactly as shown on the drawings and measured from existing ground level. The drawings shall be set out using grid coordinates on the ground using two parallel lines and a line between, or with grid lines, to ensure that the planting is set out to the correct location. The contractor shall ensure that the planting is set out to the correct location and that the planting is set out to the correct location.

1.11 All planting shall be set out exactly as shown on the drawings and measured from existing ground level. The drawings shall be set out using grid coordinates on the ground using two parallel lines and a line between, or with grid lines, to ensure that the planting is set out to the correct location. The contractor shall ensure that the planting is set out to the correct location and that the planting is set out to the correct location.

1.12 All planting shall be set out exactly as shown on the drawings and measured from existing ground level. The drawings shall be set out using grid coordinates on the ground using two parallel lines and a line between, or with grid lines, to ensure that the planting is set out to the correct location. The contractor shall ensure that the planting is set out to the correct location and that the planting is set out to the correct location.

1.13 All planting shall be set out exactly as shown on the drawings and measured from existing ground level. The drawings shall be set out using grid coordinates on the ground using two parallel lines and a line between, or with grid lines, to ensure that the planting is set out to the correct location. The contractor shall ensure that the planting is set out to the correct location and that the planting is set out to the correct location.

1.14 All planting shall be set out exactly as shown on the drawings and measured from existing ground level. The drawings shall be set out using grid coordinates on the ground using two parallel lines and a line between, or with grid lines, to ensure that the planting is set out to the correct location. The contractor shall ensure that the planting is set out to the correct location and that the planting is set out to the correct location.

1.15 All planting shall be set out exactly as shown on the drawings and measured from existing ground level. The drawings shall be set out using grid coordinates on the ground using two parallel lines and a line between, or with grid lines, to ensure that the planting is set out to the correct location. The contractor shall ensure that the planting is set out to the correct location and that the planting is set out to the correct location.

1.16 All planting shall be set out exactly as shown on the drawings and measured from existing ground level. The drawings shall be set out using grid coordinates on the ground using two parallel lines and a line between, or with grid lines, to ensure that the planting is set out to the correct location. The contractor shall ensure that the planting is set out to the correct location and that the planting is set out to the correct location.

1.17 All planting shall be set out exactly as shown on the drawings and measured from existing ground level. The drawings shall be set out using grid coordinates on the ground using two parallel lines and a line between, or with grid lines, to ensure that the planting is set out to the correct location. The contractor shall ensure that the planting is set out to the correct location and that the planting is set out to the correct location.

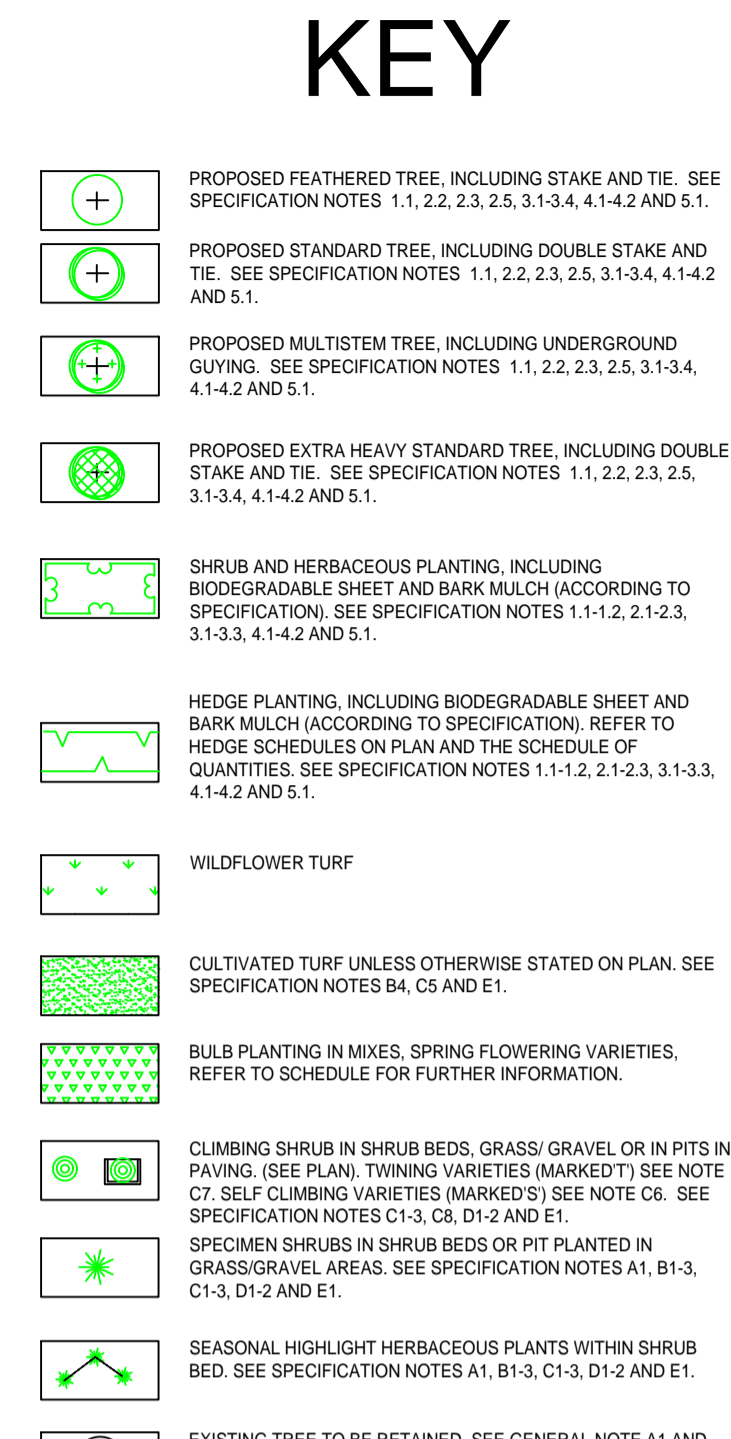
1.18 All planting shall be set out exactly as shown on the drawings and measured from existing ground level. The drawings shall be set out using grid coordinates on the ground using two parallel lines and a line between, or with grid lines, to ensure that the planting is set out to the correct location. The contractor shall ensure that the planting is set out to the correct location and that the planting is set out to the correct location.

1.19 All planting shall be set out exactly as shown on the drawings and measured from existing ground level. The drawings shall be set out using grid coordinates on the ground using two parallel lines and a line between, or with grid lines, to ensure that the planting is set out to the correct location. The contractor shall ensure that the planting is set out to the correct location and that the planting is set out to the correct location.

1.20 All planting shall be set out exactly as shown on the drawings and measured from existing ground level. The drawings shall be set out using grid coordinates on the ground using two parallel lines and a line between, or with grid lines, to ensure that the planting is set out to the correct location. The contractor shall ensure that the planting is set out to the correct location and that the planting is set out to the correct location.



QTY	CODE	PLANT NAME	STOCK	SPACING	S/C	D/F	H/D	W/D
1	1No.	CAR BET	100	3000x3000	C	15	15	15
2	2No.	CAR BET	200	3000x3000	C	15	15	15
3	3No.	CAR BET	300	3000x3000	C	15	15	15
4	4No.	CAR BET	400	3000x3000	C	15	15	15
5	5No.	CAR BET	500	3000x3000	C	15	15	15
6	6No.	CAR BET	600	3000x3000	C	15	15	15
7	7No.	CAR BET	700	3000x3000	C	15	15	15
8	8No.	CAR BET	800	3000x3000	C	15	15	15
9	9No.	CAR BET	900	3000x3000	C	15	15	15
10	10No.	CAR BET	1000	3000x3000	C	15	15	15



KEY

PROPOSED FEATHERED TREE, INCLUDING STAKE AND TIE. SEE SPECIFICATION NOTES 1.1, 2.2, 2.3, 2.5, 3.1, 3.4, 4.1, 4.2 AND 5.1.

PROPOSED STANDARD TREE, INCLUDING DOUBLE STAKE AND TIE. SEE SPECIFICATION NOTES 1.1, 2.2, 2.3, 2.5, 3.1, 3.4, 4.1, 4.2 AND 5.1.

PROPOSED MULTISTEM TREE, INCLUDING UNDERGROUND GUYING. SEE SPECIFICATION NOTES 1.1, 2.2, 2.3, 2.5, 3.1, 3.4, 4.1, 4.2 AND 5.1.

PROPOSED EXTRA HEAVY STANDARD TREE, INCLUDING DOUBLE STAKE AND TIE. SEE SPECIFICATION NOTES 1.1, 2.2, 2.3, 2.5, 3.1, 3.4, 4.1, 4.2 AND 5.1.

HEDGE PLANTING, INCLUDING BIODEGRADABLE SHEET AND BARK MULCH (ACCORDING TO SPECIFICATION). REFER TO HEDGE SCHEDULES ON PLAN AND THE SCHEDULE OF QUANTITIES. SEE SPECIFICATION NOTES 1.1-1.2, 2.1, 2.3, 3.1, 3.3, 4.1, 4.2 AND 5.1.

WILDFLOWER TURF

CULTIVATED TURF UNLESS OTHERWISE STATED ON PLAN. SEE SPECIFICATION NOTES 8A, CS AND E1.

BULB PLANTING IN MIXES. SPRING FLOWERING VARIETIES. REFER TO SCHEDULE FOR FURTHER INFORMATION.

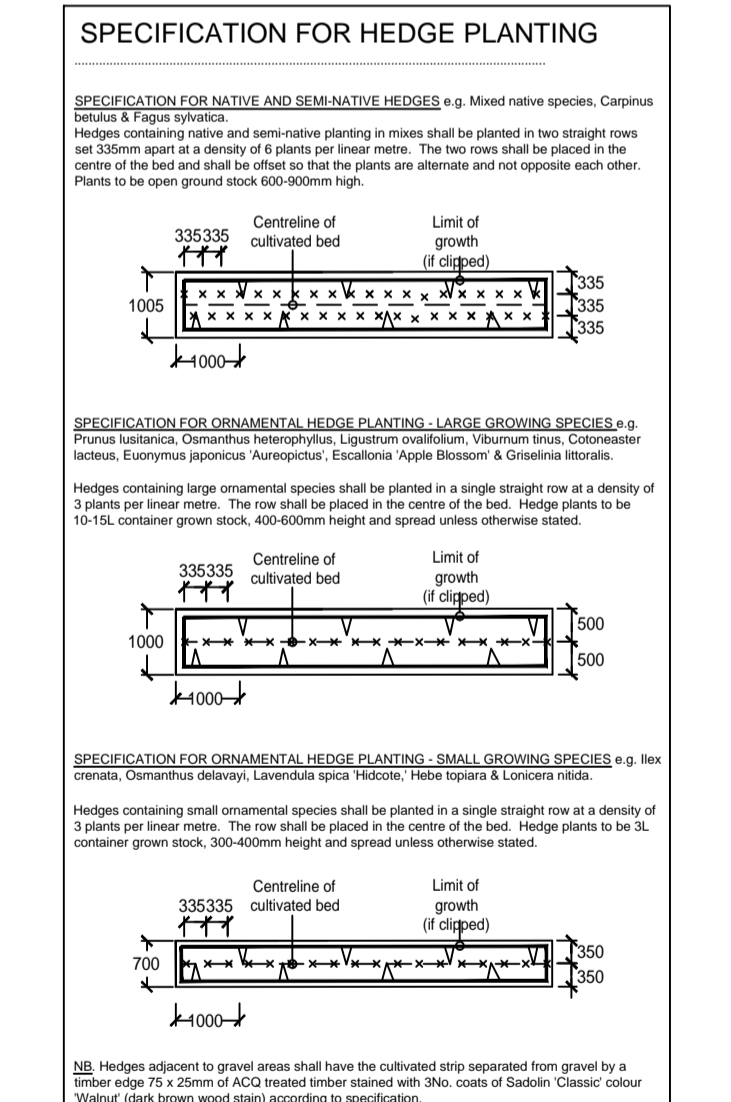
CLIMBING SHRUB IN SHRUB BEDS, GRASS/ GRAVEL OR IN PITTS IN PAVING. (SEE PLAN, TWINING VARIETIES (MARKED) SEE NOTE C7. SELF CLIMBING VARIETIES (MARKED) SEE NOTE C8. SEE SPECIFICATION NOTES C1-1, C8, D1-2 AND E1.

SPECIMEN SHRUB IN SHRUB BEDS OR PIT PLANTED IN GRASS/GRAVEL AREAS. SEE SPECIFICATION NOTES A1, B1-3, C1-3, D1-2 AND E1.

SEASONAL HIGHLIGHT HERBACEOUS PLANTS WITHIN SHRUB BED. SEE SPECIFICATION NOTES A1, B1-3, C1-3, D1-2 AND E1.

EXISTING TREE TO BE RETAINED. SEE GENERAL NOTE A1 AND E1. IF PREPARED, SEE ALSO JAMES BLAKE ASSOCIATES PLAN AND SCHEDULE FOR ANY SURGERY WORKS.

EXISTING VEGETATION GRASS OR HEDGE TO BE RETAINED. SEE GENERAL NOTE A1 AND E1. IF PREPARED, SEE ALSO JAMES BLAKE ASSOCIATES PLAN AND SCHEDULE FOR ANY SURGERY WORKS.



LANDSCAPE PROGRAMMING

DUE TO NATIONAL PLANT SHORTAGE, PLANTS MAY TAKE UP TO 4 WEEKS TO BE DELIVERED. EARLY LEAD-IN FOR SOFT LANDSCAPE IS ESSENTIAL.

REV	DATE	BY	DETAILS	DWG TITLE
01				DETAILED SOFT LANDSCAPE PROPOSALS

CLIENT: CHURCHILL RETIREMENT LIVING (MUNDOO) DWG TITLE: DETAILED SOFT LANDSCAPE PROPOSALS

SITE: BOSTON ROAD BABINBY

PURPOSE OF ISSUE: PLANNING CONDITIONS AND TENDER

DRN BY: CHECKED: AUTH'D: SCALE: DATE: DWG NO: REV.

EZ: JBA: JBA: 1:200:1A1: 12/09/21: MAY 2022: JBA: 01298-01: REV.

JAMES BLAKE ASSOCIATES

Head Office: 34-52 Ockley Way, Bury St Edmunds, Suffolk, IP33 3PA. Tel: (01284) 335797. Email: james.blake@jamesblake.co.uk

LANDSCAPE ARCHITECTURE ARBORICULTURE ECOLOGY