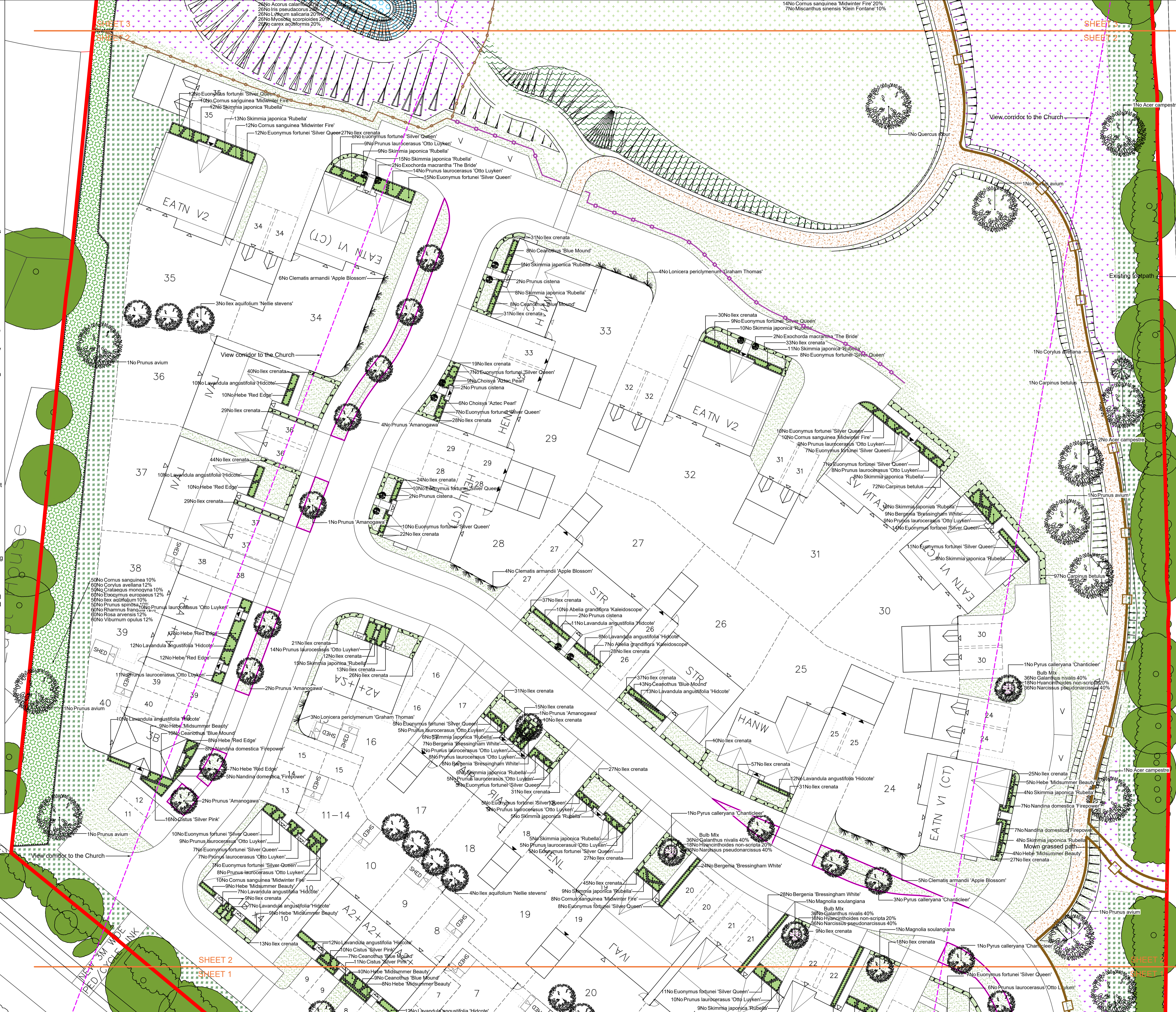


Legend

- Existing trees to be retained and protected during construction. Refer to Tree Protection Plan HAY23648-03 for further details
- Proposed tree planting within soft landscape. See tree pit detail on sheet 1
- Proposed specimen shrub planting
- Proposed climbing plants to be trained up adjacent wall/ fence with galvanised wires and hook set 250mm apart with support canes removed prior to planting
- Proposed hedge planting to be planted in a single row at 400mm centres
- Proposed *Carpinus* (hombam) hedge planting to be planted in a double staggered row 300mm apart and at 400mm centres in each row. To be maintained at 1m height
- Proposed mixed native hedge planting to be planted in a double staggered row 300mm apart and at 500mm centres in each row. To be maintained at 1.8m height
- Proposed shrub planting to receive 75mm bark mulch after planting operations
- Proposed aquatic mix to be planted in groups of 7-10no. of each species and as above
- Proposed sensory shrub mix to be planted in groups of 5-7no. of each species and as above
- Proposed native woodland and understory to be planted in groups of 5-7no. of each species and as above
- Proposed native thicket mix to be planted in groups of 5-7no. of each species and as above
- Proposed decorative mix bulb planting, to be planted in Autumn at three times the depth of the bulb
- Proposed grass areas to receive good quality amenity grass turves laid in line with good horticultural practices
- Proposed grassland areas, to be seeded with EG22 Strong Lawn Grass Mixture, supplied by Emorsgate or similar & sown at 25g/msq
- Proposed areas to be seeded with EM2 Standard General Purpose Meadow Mixture as supplied by Emorsgate or similar and sown at 4g/msq. To be fenced off with 1m high stock proof timber post and rail fence
- Proposed areas to be seeded with EM8 Meadow Mixture for Wetlands as supplied by Emorsgate or similar and sown at 4g/msq
- Proposed areas to be seeded with EG10 Tussock Grass Mixture for Wetlands as supplied by Emorsgate or similar and sown at 5g/msq
- Proposed areas to be seeded with EH1 Hedgerow Mixture as supplied by Emorsgate or similar and sown at 4g/msq
- Proposed grass mat safety surfacing as supplied by Matta products or similar. To be laid to critical fall heights
- Proposed footpaths to be laid with self binding breodon gravel. To be edged with AluExcel aluminum edging, as supplied by Excel Edge or similar and laid in line with engineers details
- Proposed footpath to be laid with resin bound gravel as supplied by SureSet or similar. Laid to engineers detail
- Proposed knee rail to be 450mm high as supplied by Jacksons Fencing or similar. To include maintenance gates
- Proposed knee rail to be 300mm high as supplied by Jacksons Fencing or similar. To include maintenance gates
- Proposed 1.2m high bow top railings as supplied by Jacksons Fencing or similar. To include contrasting gates
- Proposed root barrier to be ReRoot 2000 as supplied by GreenBlue Urban or similar
- Proposed Willenhall Seat, product ref: BX14 4015 (to be hardwood) and Westleigh Litter Bin, product ref: BX50S 2800 (with Seagull Flap) as supplied by Broxap or similar
- Location of interpretation board to explain landscape scheme and access to the site
- Cut lines



SPECIFICATION
All works generally, to comply with the written Soft Landscape Specification.

In case of quantity discrepancies, the quantities on the plan(s) take precedent over the quantities shown in the planting schedule.

NOTES:
DO NOT SCALE FROM DRAWING
NOT FOR CONSTRUCTION, FOR PLANNING PURPOSES ONLY

See sheet 3 of 3 for tree pit detail of trees within verges



Rev	Date	Details	Drawn
H	02.06.23	Client comments - interpret board	AC
F	01.06.23	Coordinate boundary enclosures	JS
G	28.03.23	Client comments - turf strip added	HCS
E	06.02.23	Ecologist comments to achieve BNG	SR
D	06.12.22	Minor layout revision	SR
C	29.11.22	Amendments to tree species	SR
B	23.11.22	Layout revision and LPA comments	SR
A	26.08.22	Layout revision and LPA comments	SR



ACD ENVIRONMENTAL
HEAD OFFICE
Rodbourne Rail Business Centre, Grange Lane,
Malmesbury, SN16 0ES
Tel: 01666 825646
4 & 5 The Old Mill, Fry's Yard, Bridge Street,
Godalming, GU7 1HP
Tel: 01483 425714
Suite 6, Crescent House, Yonge Close,
Eastleigh, SO50 9SX
Tel: 02382 026300
email: mail@acdenv.co.uk
www.acdenvironmental.co.uk



scheme: Land off Berry Hill Road, Aderbury, Banbury
client: Hayfield Homes
drawing: Landscape Proposals
date: March 2022
scale: 1:200@A1
drawing no: HAY23648-11H Sheet 2 of 3
drawn: SR checked: JC

Copyright of ACD Environmental Ltd. All rights reserved in Chapter IV of the Copyright, Designs and Patents Act 1988 have been generally asserted. 2011. Copyright of this plan remains with ACD until all fees have been paid in full.