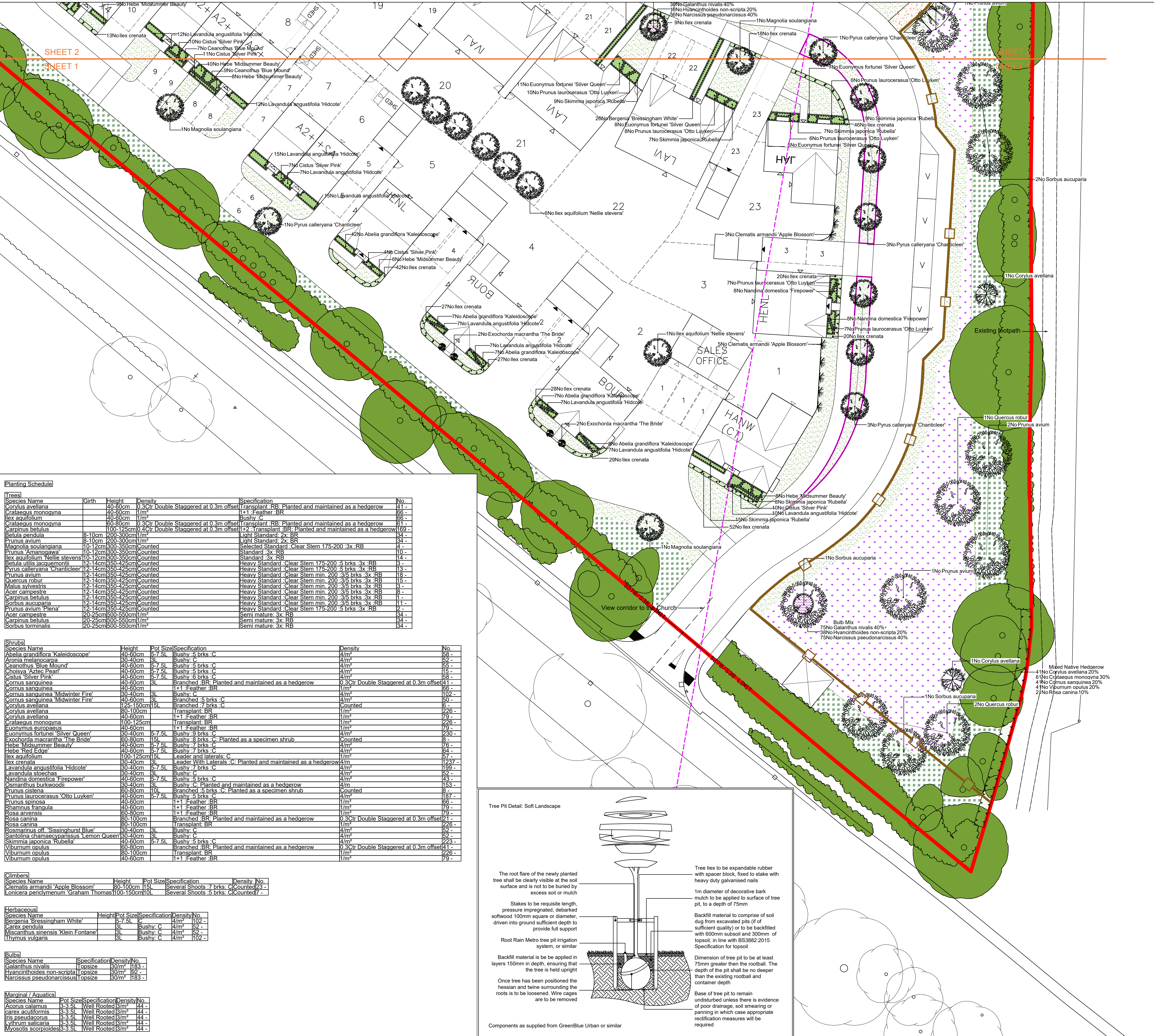


Legend

- Existing trees to be retained and protected during construction. Refer to Tree Protection Plan HAY23648-03 for further details
- Proposed tree planting within soft landscape. See tree pit detail on sheet 1
- Proposed specimen shrub planting
- Proposed climbing plants to be trained up adjacent wall fence with galvanised wires and hook set 250mm apart with support canes removed prior to planting
- Proposed hedge planting to be planted in a single row at 400mm centres
- Proposed *Carpinus* (hornbeam) hedge planting to be planted in a double staggered row 300mm apart and at 400mm centres in each row. To be maintained at 1m height
- Proposed mixed native hedge planting to be planted in a double staggered row 300mm apart and at 500mm centres in each row. To be maintained at 1.8m height
- Proposed shrub planting to receive 75mm bark mulch after planting operations
- Proposed aquatic mix to be planted in groups of 7-10no. of each species and as above
- Proposed sensory shrub mix to be planted in groups of 5-7no. of each species and as above
- Proposed native woodland and understorey to be planted in groups of 5-7no. of each species and as above
- Proposed native thicket mix to be planted in groups of 5-7no. of each species and as above
- Proposed decorative mix bulb planting, to be planted in Autumn at three times the depth of the bulb
- Proposed grass areas to receive good quality amenity grass turves laid in line with good horticultural practices
- Proposed grassland areas, to be seeded with EG22 Strong Lawn Grass Mixture, supplied by Emorsgate or similar & sown at 25g/msq
- Proposed areas to be seeded with EM2 Standard General Purpose Meadow Mixture as supplied by Emorsgate or similar and sown at 4g/msq. To be fenced off with 1m high stock proof timber post and rail fence
- Proposed areas to be seeded with EM8 Meadow Mixture for Wetlands as supplied by Emorsgate or similar and sown at 4g/msq
- Proposed areas to be seeded with EG10 Tussock Grass Mixture for Wetlands as supplied by Emorsgate or similar and sown at 5g/msq
- Proposed areas to be seeded with EH1 Hedgerow Mixture as supplied by Emorsgate or similar and sown at 4g/msq
- Proposed grass mat safety surfacing as supplied by Matta products or similar. To be laid to critical fall heights
- Proposed footpaths to be laid with self binding breedon gravel. To be edged with AluExcel aluminum edging, as supplied by Excel Edge or similar and laid in line with engineers details
- Proposed footpath to be laid with resin bound gravel as supplied by SureSet or similar. Laid to engineers detail
- Proposed knee rail to be 450mm high as supplied by Jacksons Fencing or similar. To include maintenance gates
- Proposed knee rail to be 300mm high as supplied by Jacksons Fencing or similar. To include maintenance gates
- Proposed 1.2m high bow top railings as supplied by Jacksons Fencing or similar. To include contrasting gates
- Proposed root barrier to be ReRoot 2000 as supplied by GreenBlue Urban or similar
- Proposed Willenhall Seat, product ref: BX14 4015 (to be hardwood) and Westleigh Litter Bin, product ref: BX50S 2800 (with Seagull Flap) as supplied by Broxap or similar
- Location of interpretation board to explain landscape scheme and access to the site
- Cut lines



Planting Schedule

Species Name	Girth	Height	Density	Specification	No.
<i>Corvus avellana</i>	40-60cm	0.3Cr	Double Staggered at 0.3m offset	Transplant RB Planted and maintained as a hedgerow	41
<i>Crataegus monoqvna</i>	40-60cm	11m		1+1 Feather BR	66
<i>lex aquifolium</i>	40-60cm	11m		Bushy C	66
<i>Crataegus monoqvna</i>	80-80cm	0.3Cr	Double Staggered at 0.3m offset	Transplant RB Planted and maintained as a hedgerow	61
<i>Carpinus betulus</i>	100-125cm	0.3Cr	Double Staggered at 0.3m offset	1+2 Transplant BR Planted and maintained as a hedgerow	169
<i>Betula pendula</i>	8-10cm	200-300cm	1/m	Light Standard 2x BR	34
<i>Prunus avium</i>	8-10cm	200-300cm	1/m	Light Standard 2x BR	34
<i>Magnolia soulangiana</i>	10-12cm	300-350cm	Counted	Selected Standard Clear Stem 175-200 3x RB	4
<i>Prunus Amanogava</i>	10-12cm	300-350cm	Counted	Standard 3x RB	10
<i>lex aquifolium Nellie stevens</i>	10-12cm	350-425cm	Counted	Standard 3x RB	14
<i>Betula utilis jacquemontii</i>	12-14cm	350-425cm	Counted	Heavy Standard Clear Stem 175-200 5 brks 3x RB	3
<i>Pyrus calleryana Chanticleer</i>	12-14cm	350-425cm	Counted	Heavy Standard Clear Stem 175-200 5 brks 3x RB	13
<i>Prunus avium</i>	12-14cm	350-425cm	Counted	Heavy Standard Clear Stem min 200 3/5 brks 3x RB	18
<i>Quercus robur</i>	12-14cm	350-425cm	Counted	Heavy Standard Clear Stem min 200 3/5 brks 3x RB	15
<i>Malus sylvestris</i>	12-14cm	350-425cm	Counted	Heavy Standard Clear Stem min 200 3/5 brks 3x RB	3
<i>Acer campestre</i>	12-14cm	350-425cm	Counted	Heavy Standard Clear Stem min 200 3/5 brks 3x RB	8
<i>Carpinus betulus</i>	12-14cm	350-425cm	Counted	Heavy Standard Clear Stem min 200 3/5 brks 3x RB	1
<i>Sorbus aucuparia</i>	12-14cm	350-425cm	Counted	Heavy Standard Clear Stem min 200 3/5 brks 3x RB	11
<i>Prunus avium Plena</i>	12-14cm	350-425cm	Counted	Heavy Standard Clear Stem 175-200 5 brks 3x RB	2
<i>Acer campestre</i>	20-25cm	500-550cm	1/m	Semi mature 3x RB	34
<i>Carpinus betulus</i>	20-25cm	500-550cm	1/m	Semi mature 3x RB	34
<i>Sorbus torminalis</i>	20-25cm	500-550cm	1/m	Semi mature 3x RB	34

Species Name	Height	Pot Size	Specification	Density	No.
<i>Abelia grandiflora Kaleidoscope</i>	40-60cm	6-7.5l	Bushy 5 brks C	4/m ²	58
<i>Conia melanocarpa</i>	30-40cm	3l	Bushy 5 brks C	4/m ²	52
<i>Ceanothus Blue Mound</i>	40-60cm	6-7.5l	Bushy 5 brks C	4/m ²	52
<i>Choisya Aztec Pearl</i>	40-60cm	6-7.5l	Bushy 5 brks C	4/m ²	15
<i>Cistus Silver Pink</i>	40-60cm	6-7.5l	Bushy 5 brks C	4/m ²	58
<i>Cornus sanguinea</i>	40-60cm	3l	Branched BR Planted and maintained as a hedgerow	0.3Cr Double Staggered at 0.3m offset	41
<i>Cornus sanguinea</i>	40-60cm	11m	1+1 Feather BR	1/m ²	66
<i>Cornus sanguinea Midwinter Fire</i>	30-40cm	3l	Bushy C	4/m ²	102
<i>Cornus sanguinea Midwinter Fire</i>	40-60cm	3l	Branched 5 brks C	4/m ²	40
<i>Corvus avellana</i>	125-150cm	15l	Branched 7 brks C	Counted	6
<i>Corvus avellana</i>	80-100cm	11m	Transplant BR	1/m ²	226
<i>Corvus avellana</i>	40-60cm	11m	1+1 Feather BR	1/m ²	66
<i>Crataegus monoqvna</i>	100-125cm	11m	Transplant BR	1/m ²	226
<i>Euonymus europaeus</i>	40-60cm	11m	1+1 Feather BR	1/m ²	76
<i>Euonymus fortunei Silver Queen</i>	40-60cm	6-7.5l	Bushy 5 brks C	4/m ²	64
<i>Euonymus fortunei Silver Queen</i>	60-80cm	15l	Bushy 8 brks C Planted as a specimen shrub	Counted	8
<i>Exochorda macrantha The Bride</i>	40-60cm	6-7.5l	Bushy 7 brks C	4/m ²	76
<i>Hebe Midsummer Beauty</i>	40-60cm	6-7.5l	Bushy 7 brks C	4/m ²	64
<i>Hebe Red Edge</i>	40-60cm	6-7.5l	Bushy 7 brks C	4/m ²	64
<i>lex aquifolium</i>	100-125cm	15l	Leader and laterals C	1/m ²	57
<i>lex crenata</i>	30-40cm	3l	Leader With Laterals C Planted and maintained as a hedgerow	4/m	1937
<i>Lavandula angustifolia Hidcote</i>	40-60cm	6-7.5l	Bushy 7 brks C	4/m ²	199
<i>Lavandula stoechas</i>	30-40cm	3l	Bushy C	4/m ²	52
<i>Nandina domestica Firepower</i>	40-60cm	6-7.5l	Bushy 5 brks C	4/m ²	43
<i>Ceanothus burkwoodii</i>	30-40cm	3l	Bushy C Planted and maintained as a hedgerow	4/m	153
<i>Prunus cistena</i>	60-80cm	10l	Branched 5 brks C Planted as a specimen shrub	Counted	8
<i>Prunus laurocerasus Otto Luyken</i>	40-60cm	6-7.5l	Bushy 5 brks C	4/m ²	187
<i>Prunus spiosa</i>	40-60cm	11m	1+1 Feather BR	1/m ²	66
<i>Rhamnus frangula</i>	40-60cm	11m	1+1 Feather BR	1/m ²	79
<i>Rosa arvensis</i>	60-80cm	11m	1+1 Feather BR	1/m ²	79
<i>Rosa canina</i>	80-100cm	11m	1+1 Feather BR Planted and maintained as a hedgerow	0.3Cr Double Staggered at 0.3m offset	41
<i>Rosa canina</i>	80-100cm	11m	Transplant BR	1/m ²	226
<i>Rosmarinus off Sissinghurst Blue</i>	30-40cm	3l	Bushy C	4/m ²	52
<i>Santolina chamaecyparissus Lemon Queen</i>	30-40cm	3l	Bushy C	4/m ²	52
<i>Skimmia japonica Rubella</i>	40-60cm	6-7.5l	Bushy 5 brks C	4/m ²	52
<i>Viburnum opulus</i>	60-80cm	11m	Branched BR Planted and maintained as a hedgerow	0.3Cr Double Staggered at 0.3m offset	41
<i>Viburnum opulus</i>	80-100cm	11m	Transplant BR	1/m ²	226
<i>Viburnum opulus</i>	40-60cm	11m	1+1 Feather BR	1/m ²	79

Climbers

Species Name	Height	Pot Size	Specification	Density	No.
<i>Clematis armandi Apple Blossom</i>	80-100cm	15l	Several Shoots 7 brks C	Counted	23
<i>Lonicera periclymenum Graham Thomas</i>	100-150cm	10l	Several Shoots 5 brks C	Counted	7

Herbaceous

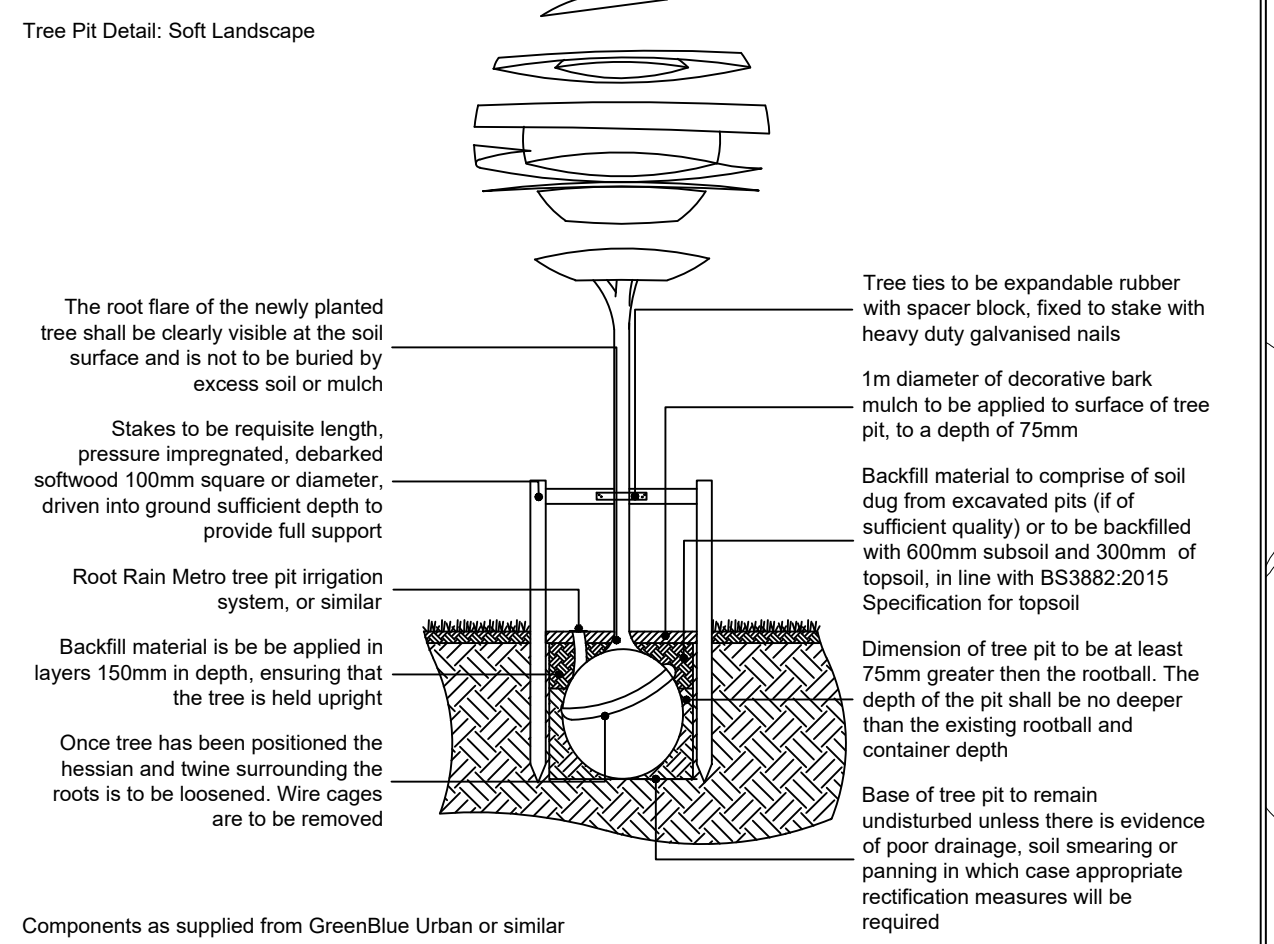
Species Name	Height	Pot Size	Specification	Density	No.
<i>Bergenia Bressingham White</i>	5-7.5l	3l	Bushy C	4/m ²	102
<i>Carex pendula</i>	3-5l	3l	Bushy C	4/m ²	82
<i>Miscanthus sinensis Klein Fontane</i>	3l	3l	Bushy C	4/m ²	82
<i>Thymus vulgaris</i>	3l	3l	Bushy C	4/m ²	102

Bulbs

Species Name	Specification	Density	No.
<i>Gallanthus nivalis</i>	10size	30/m ²	183
<i>Hyanthoides non-scripta</i>	10size	30/m ²	82
<i>Narcissus pseudonarcissus</i>	10size	30/m ²	183

Marginal / Aquatics

Species Name	Pot Size	Specification	Density	No.
<i>Acorus calamus</i>	3-3.5l	Well Rooted 3/m ²	44	
<i>Carex acutiformis</i>	3-3.5l	Well Rooted 3/m ²	44	
<i>iris pseudacorus</i>	3-3.5l	Well Rooted 3/m ²	44	
<i>Lythrum salicaria</i>	3-3.5l	Well Rooted 3/m ²	44	
<i>Myosotis scorpioides</i>	3-3.5l	Well Rooted 3/m ²	44	



SPECIFICATION
All works generally, to comply with the written Soft Landscape Specification.

In case of quantity discrepancies, the quantities on the plan(s) take precedent over the quantities shown in the planting schedule.

NOTES:
DO NOT SCALE FROM DRAWING
NOT FOR CONSTRUCTION, FOR PLANNING PURPOSES ONLY

See sheet 3 of 3 for tree pit detail of trees within verges

Rev	Date	Details	Drawn
H	02.06.23	Client comments - interpret board	AC
G	01.06.23	Coordinate boundary enclosures	JS
F	28.03.23	Client comments - turf strip added	HCS
E	06.02.23	Ecologist comments to achieve BNG	SR
D	06.12.22	Minor layout revision	SR
C	29.11.22	Amendments to tree species	SR
B	23.11.22	Layout revision and LPA comments	SR
A	26.08.22	Layout revision and LPA comments	SR

ACD ENVIRONMENTAL

HEAD OFFICE
Rodbourne Rail Business Centre, Orange Lane,
Malmesbury, SN16 0ES
Tel: 01666 825646

4 & 5 The Old Mill, Fry's Yard, Bridge Street,
Godalming, GU7 1HP
Tel: 01483 425714

Suite 6, Crescent House, Yonge Close,
Eastleigh, SO50 9SX
Tel: 02382 026300

email: mail@acdenv.co.uk
www.acdenvironmental.co.uk

HAYFIELD

scheme: Land off Berry Hill Road,
Alderbury, Banbury
client: Hayfield Homes
drawing: Landscape Proposals
date: March 2022
scale: 1:250@A1
drawing no: HAY23648-11H Sheet 1 of 3
drawn: SR checked: JC

Copyright of ACD Environmental Ltd. All rights described in Chapter IV of the Copyright, Designs and Patents Act 1988 have been generally asserted. 2011. Copyright of this plan remains with ACD until all fees have been paid in full.