

**SPECIFICATION**  
All works generally, to comply with the written Soft Landscape Specification.

**NOTES:**  
DO NOT SCALE FROM DRAWING  
NOT FOR CONSTRUCTION, FOR PLANNING PURPOSES ONLY

**Legend**

- Existing trees to be retained and protected during construction
- Proposed tree planting within soft landscape. See detail 1 on sheet
- Proposed specimen tree planting to receive short angular staking on half standards with expandable tree ties. Irrigation tubing to root system of specimens as required
- Proposed hedge planting to be planted in a single row at 300mm centres to be maintained at 0.8m
- Proposed mixed native hedge planting to be planted in a double staggered row 300mm apart and at 300mm centres in each row. To be maintained at 1.8m height adjacent to site boundaries
- Proposed shrub planting to receive 75mm bark mulch after planting operations
- Proposed native buffer mix planting to be planted in groups of 3no. of each species and as above
- Proposed grass areas, to be turf with good quality grass turf laid in line with good horticultural practices
- Proposed additional fencing to be installed to rear gardens
- Proposed root barrier to be ReRoot600 as supplied by GreenBlue Urban or similar



B	25.01.23	Client comments	JNT
A	13.10.21	LPA comments	JNT
Rev	Date	Details	Drawn



**HEAD OFFICE**  
Rodbourne Rail Business Centre, Grange Lane,  
Malmesbury, SN16 0ES  
Tel: 01666 825646

4 & 5 The Old Mill, Fry's Yard, Bridge Street,  
Godalming, GU7 1HP  
Tel: 01483 425714

Suite 6, Crescent House, Yonge Close,  
Eastleigh, SO50 9SX  
Tel: 02382 026300

email: mail@acdenv.co.uk  
www.acdenvironmental.co.uk



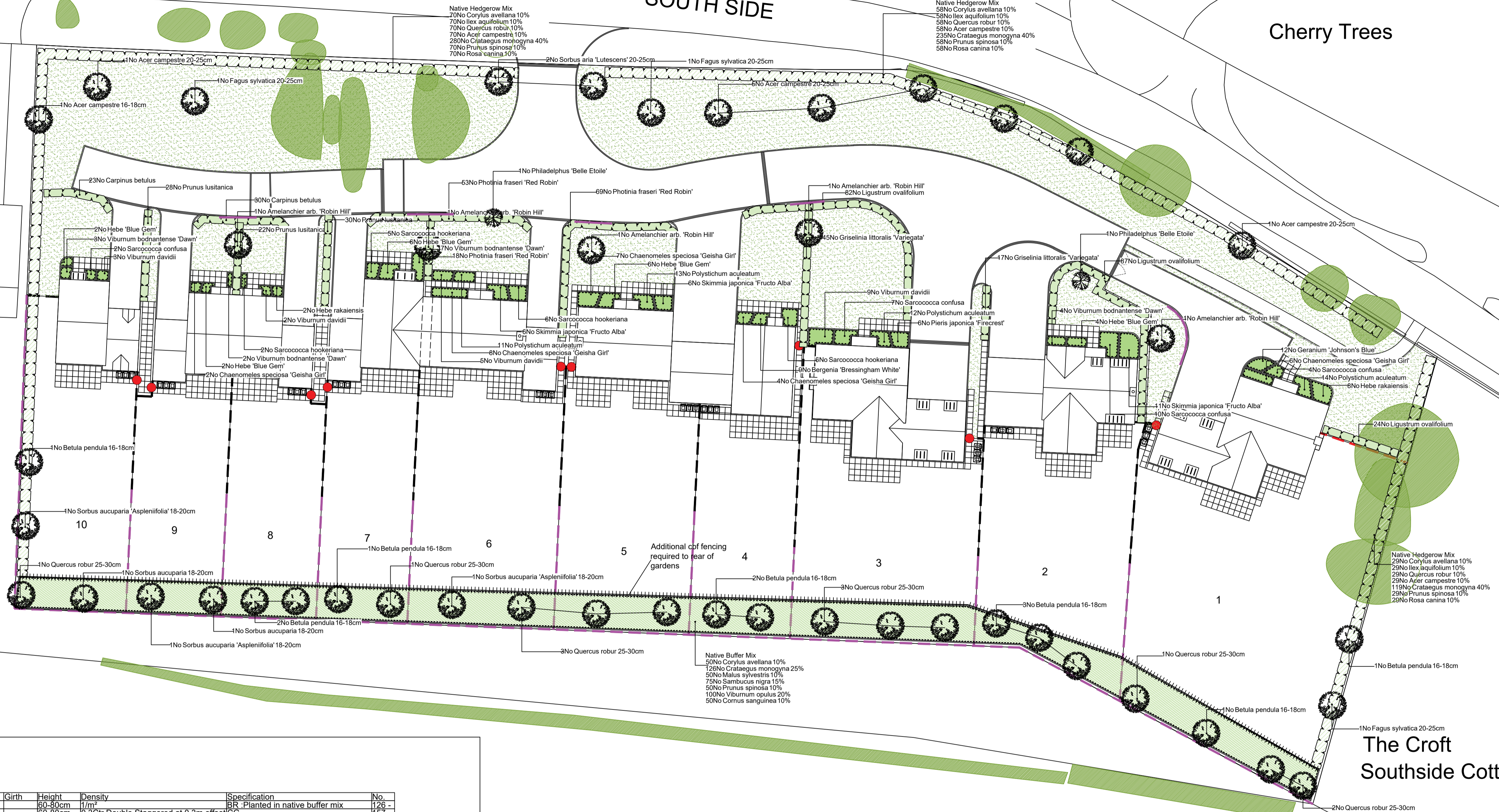
scheme: Land south of Southside, Steeple Aston, Oxon  
client: Rectory Homes  
drawing: Soft Landscape  
date: Apr. 2021  
scale: 1:250@A1  
drawing no: REC23270-11B  
drawn: JNT checked: JS

Copyright of ACD Environmental Ltd. All rights described in Chapter IV of the Copyright, Designs and Patents Act 1988 have been generally asserted. 2011. Copyright of this plan remains with ACD until all fees have been paid in full.

**SOUTH SIDE**

**Cherry Trees**

**The Croft Southside Cottage**



**Planting Schedule**

Trees	Species Name	Girth	Height	Density	Specification	No.
	Crataegus monogyna	60-80cm	0.3m	1/m <sup>2</sup>	BR Planted in native buffer mix	126
	Ilex aquifolium	80-80cm	0.3m	Double Staggered at 0.3m offset	CS	157
	Acer campestre	60-80cm	0.3m	Double Staggered at 0.3m offset	Transplant Bushy BR	157
	Crataegus monogyna	60-80cm	0.3m	Double Staggered at 0.3m offset	Transplant Bushy BR	634
	Malus sylvestris	80-100cm	1/m <sup>2</sup>		BR Planted in native buffer mix	50
	Quercus robur	80-100cm	0.3m	Double Staggered at 0.3m offset	BR	157
	Betula pendula	16-18cm	425-600cm	Counted	Semi-Mature Clear Stem min. 200 RB11	1
	Quercus robur	25-30cm	425-600cm	Counted	Semi-Mature Clear Stem min. 200 RB11	1
	Sorbus aucuparia 'Asplenifolia'	18-20cm	425-600cm	Counted	Semi-Mature Clear Stem min. 200 RB3	1
	Sorbus aucuparia	18-20cm	425-600cm	Counted	Semi-Mature Clear Stem min. 200 RB2	1
	Acer campestre	16-18cm	425-600cm	Counted	Semi-Mature Clear Stem min. 200 RB1	1
	Fagus sylvatica	20-25cm	425-600cm	Counted	Semi-Mature Clear Stem min. 200 RB3	1
	Acer campestre	20-25cm	425-600cm	Counted	Semi-Mature Clear Stem min. 200 RB7	1
	Sorbus aria 'Lutescens'	20-25cm	425-600cm	Counted	Semi-Mature Clear Stem min. 200 RB2	1

**Shrubs**

Species Name	Height	Pot Size	Specification	Density	No.
Amelanchier arb. 'Robin Hill'	175-200cm	40L	Standard 2/3 brks C	Counted	5
Carpinus betulus	80-100	5L	Bushy C	3/m	53
Chaenomeles speciosa 'Geisha Girl'	60-80cm	10L	Bushy C	2/m <sup>2</sup>	27
Cornus sanguinea	60-80cm	10L	Branched BR Planted in native buffer mix	1/m <sup>2</sup>	50
Corylus avellana	60-80cm	10L	Branched BR Planted in native buffer mix	1/m <sup>2</sup>	50
Corylus avellana	60-80cm	10L	Branched BR	0.3m Ctr Double Staggered at 0.3m offset	157
Griselinia littoralis 'Variegata'	80-100	5L	Bushy C	3/m	82
Hebe 'Blue Gem'	40-60cm	10L	Bushy C	2/m <sup>2</sup>	20
Hebe rakaiensis	40-60cm	10L	Bushy C	2/m <sup>2</sup>	10
Ligustrum ovalifolium	80-100	5L	Bushy C	3/m	193
Philadelphus 'Belle Etoile'	175-200cm	40L	Standard 2/3 brks C	Counted	2
Photinia fraseri 'Red Robin'	80-100	5L	Bushy C	3/m	140
Pieris japonica 'Firecrest'	80-80cm	10L	Bushy C	2/m <sup>2</sup>	6
Prunus lusitanica	80-100	5L	Bushy C	3/m	80
Prunus spinosa	60-80cm	10L	Branched BR Planted in native buffer mix	1/m <sup>2</sup>	50
Prunus spinosa	60-80cm	10L	Bushy	0.3m Ctr Double Staggered at 0.3m offset	157
Rosa canina	60-80cm	10L	Bushy	0.3m Ctr Double Staggered at 0.3m offset	157
Sambucus nigra	60-80cm	10L	Branched BR Planted in native buffer mix	1/m <sup>2</sup>	75
Sarcococca confusa	40-60cm	10L	Bushy C	2/m <sup>2</sup>	23
Sarcococca hookeriana	60-80cm	10L	Bushy C	2/m <sup>2</sup>	23
Skimmia japonica 'Fructo Alba'	60-80cm	10L	Bushy C	2/m <sup>2</sup>	23
Viburnum bodnantense 'Dawn'	60-80cm	10L	Bushy C	2/m <sup>2</sup>	16
Viburnum davidii	60-80cm	10L	Bushy C	2/m <sup>2</sup>	19
Viburnum opulus	60-80cm	10L	Branched BR Planted in native buffer mix	1/m <sup>2</sup>	100

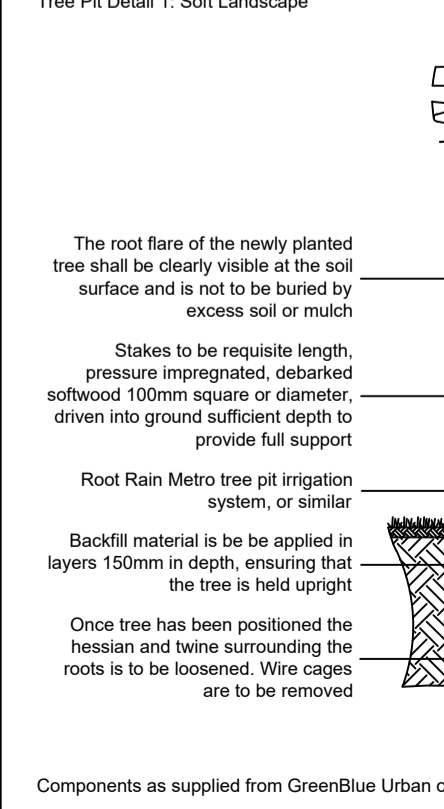
**Herbaceous**

Species Name	Height	Pot Size	Specification	Density	No.
Bergenia 'Bressingham White'	5L	Full Pot	4/m <sup>2</sup>	1	9
Geranium 'Johnson's Blue'	5L	Full Pot	4/m <sup>2</sup>	1	12

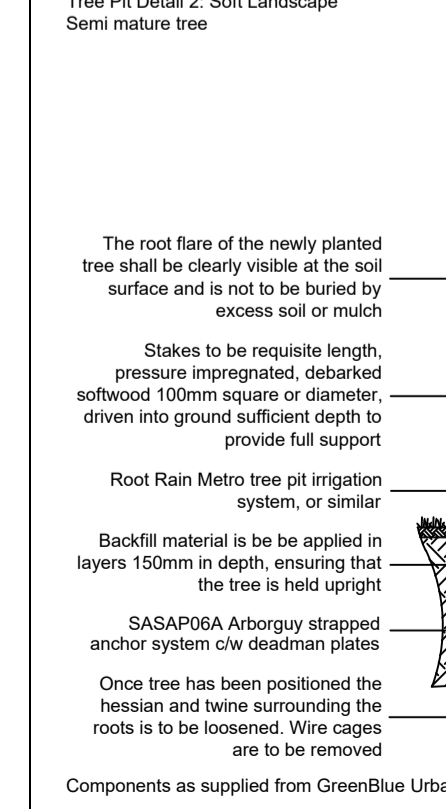
**Ferns**

Species Name	Height	Pot Size	Specification	Density	No.
Polystichum aculeatum	5-7.5L	Full Pot	4/m <sup>2</sup>	1	150

Tree Pit Detail 1: Soft Landscape



Tree Pit Detail 2: Soft Landscape



Tree Pit Detail 3: large shrub specimens in soft landscape

