

**A/C Schedule**

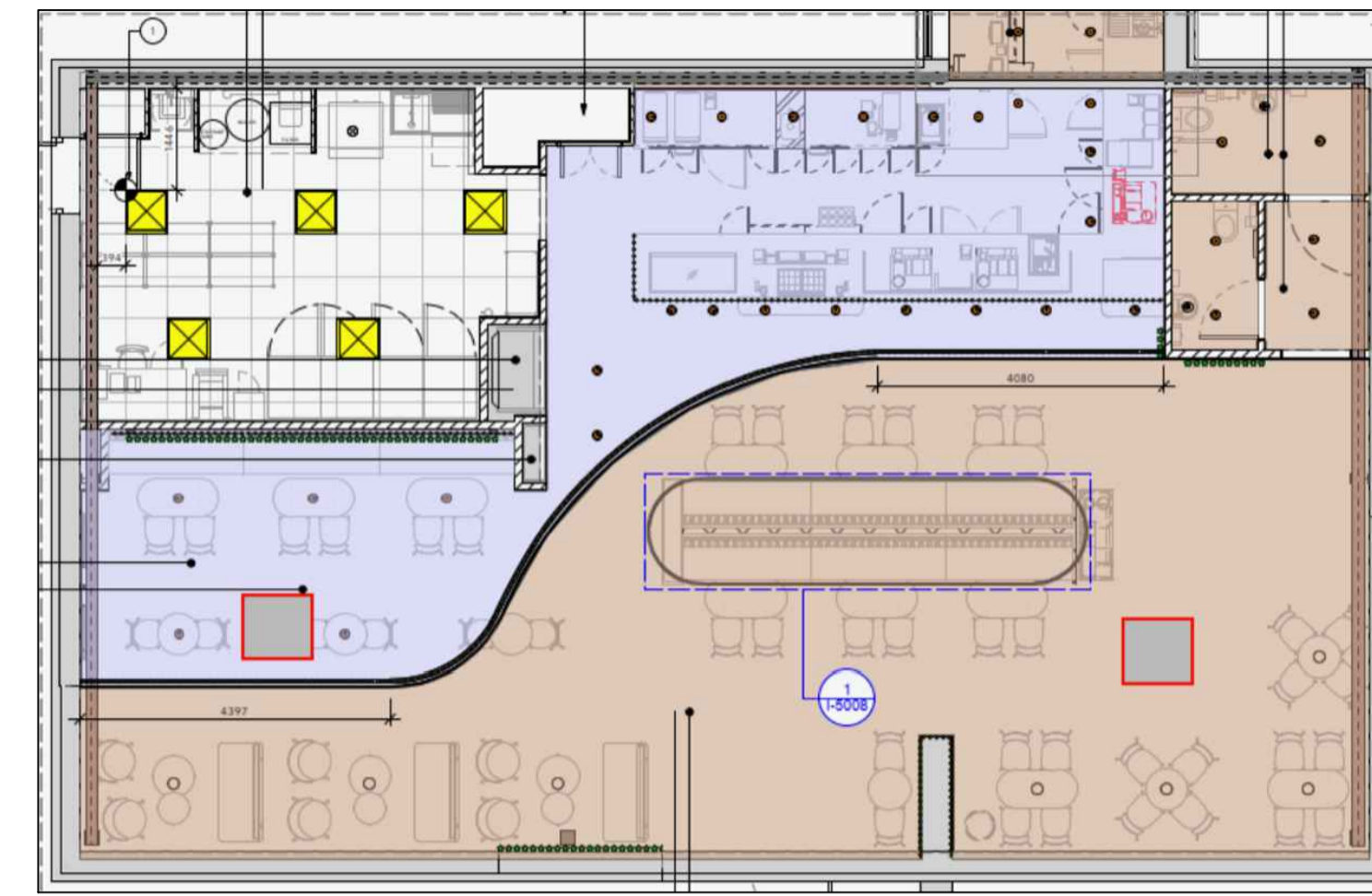
| Ref | Make   | Model      | Location              | Type             | Electrical Requirement |
|-----|--------|------------|-----------------------|------------------|------------------------|
| FC1 | Daikin | FCAG125A   | Customer seating area | Ceiling Cassette | Interconnecting        |
| FC2 | Daikin | FCAG125A   | Customer seating area | Ceiling Cassette | Interconnecting        |
| CU1 | Daikin | AZAS125MV1 | External unit         | Condenser        | 1ph 32A                |
| CU2 | Daikin | AZAS125MV1 | External unit         | Condenser        | 1ph 32A                |

**Fan Schedule**

| Ref | Make          | Model                     | Function              | Location              | Controller | Electrical Req |
|-----|---------------|---------------------------|-----------------------|-----------------------|------------|----------------|
| EF1 | Soler & Palau | 315Dia mixed flow in-line | Back of House Extract | Void above staff room | SP5010     | TBC            |
| EF2 | Soler & Palau | 150Dia mixed flow in-line | W.C Extract           | Void above Dis W.C    | N/A        | TBC            |
| EF3 | Soler & Palau | 150Dia mixed flow in-line | W.C Extract           | Void above Dis W.C    | N/A        | TBC            |

**Extract Grille Schedule**

| Ref | Type                     | Size  |
|-----|--------------------------|-------|
| E1  | Advanced Air GC Eggcrate | 595SQ |
| E2  | Advanced Air GC Eggcrate | 595SQ |
| E3  | Advanced Air GC Eggcrate | 595SQ |
| E4  | Air Valve                | 100Ø  |
| E5  | Louvre                   | 400SQ |
| E6  | Louvre                   | 250SQ |
| E7  | Air Valve                | 100Ø  |
| E8  | Air Valve                | 100Ø  |



RCP (NTS)

ALL RIGHTS RESERVED. THE COPYRIGHT OF THIS DRAWING IS WITH ECO CLIMATE CONTROL LTD. NO PART OF THIS DRAWING MAY BE REPRODUCED, STORED WITHIN A RETRIEVAL SYSTEM, OR TRANSMITTED TO OTHER PARTIES, WITHOUT PRIOR WRITTEN PERMISSION FROM ECO CLIMATE CONTROL LTD. THIS DRAWING IS OFFERED ONLY FOR THE PURPOSE OF THE SERVICES INTENDED.  
ALL LEVELS AND DIMENSIONS ARE TO BE VERIFIED ON SITE BEFORE COMMENCEMENT OF WORKS. PLEASE NOTIFY THE ORIGINATOR OF THIS DRAWING SHOULD DIFFERENCES BE NOTED. ALL DIMENSIONS ARE IN MILLIMETERS (MM) UNLESS STATED OTHERWISE. DO NOT SCALE FROM THIS DRAWING.  
NO THIRD PARTY RIGHTS ARE INTENDED BY THIS DRAWING.

**NOTES:**



THE FOLLOWING DRAWINGS ARE USED AS BASE REFERENCES:

| Issue: | Date:    | Revision details:  | Drawn: | Chkd: |
|--------|----------|--------------------|--------|-------|
| P2     | 05.05.23 | Proposed HVCA Plan | MRE    | MPR   |
| P1     | 22.02.23 | Proposed HVCA Plan | MRE    | MPR   |

| Scale     | Design | PM | MR | Date   |
|-----------|--------|----|----|--------|
| 1:50 @ A1 |        |    |    | Feb 23 |



**Project**  
STARBUCKS DRIVE THROUGH BANBURY

**Title**  
PROPOSED MECHANICAL LAYOUT PLAN

**Drawing No.** XXX/X/XXX **Rev.** P2

20 Little Oxley, West Malling  
Kent, ME19 5QU  
Tel/Fax: 01732-321633  
[www.ecoclimatecontroltd.co.uk](http://www.ecoclimatecontroltd.co.uk)

