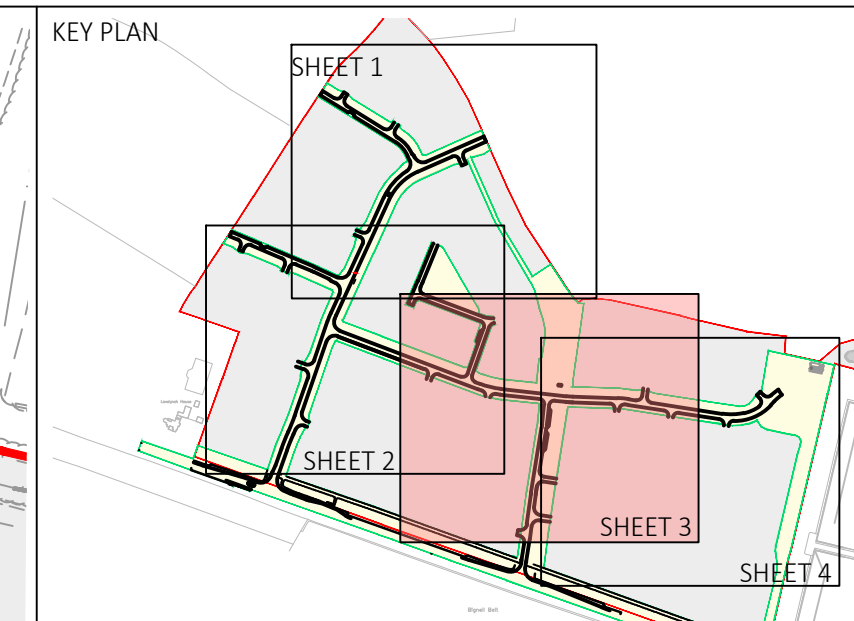
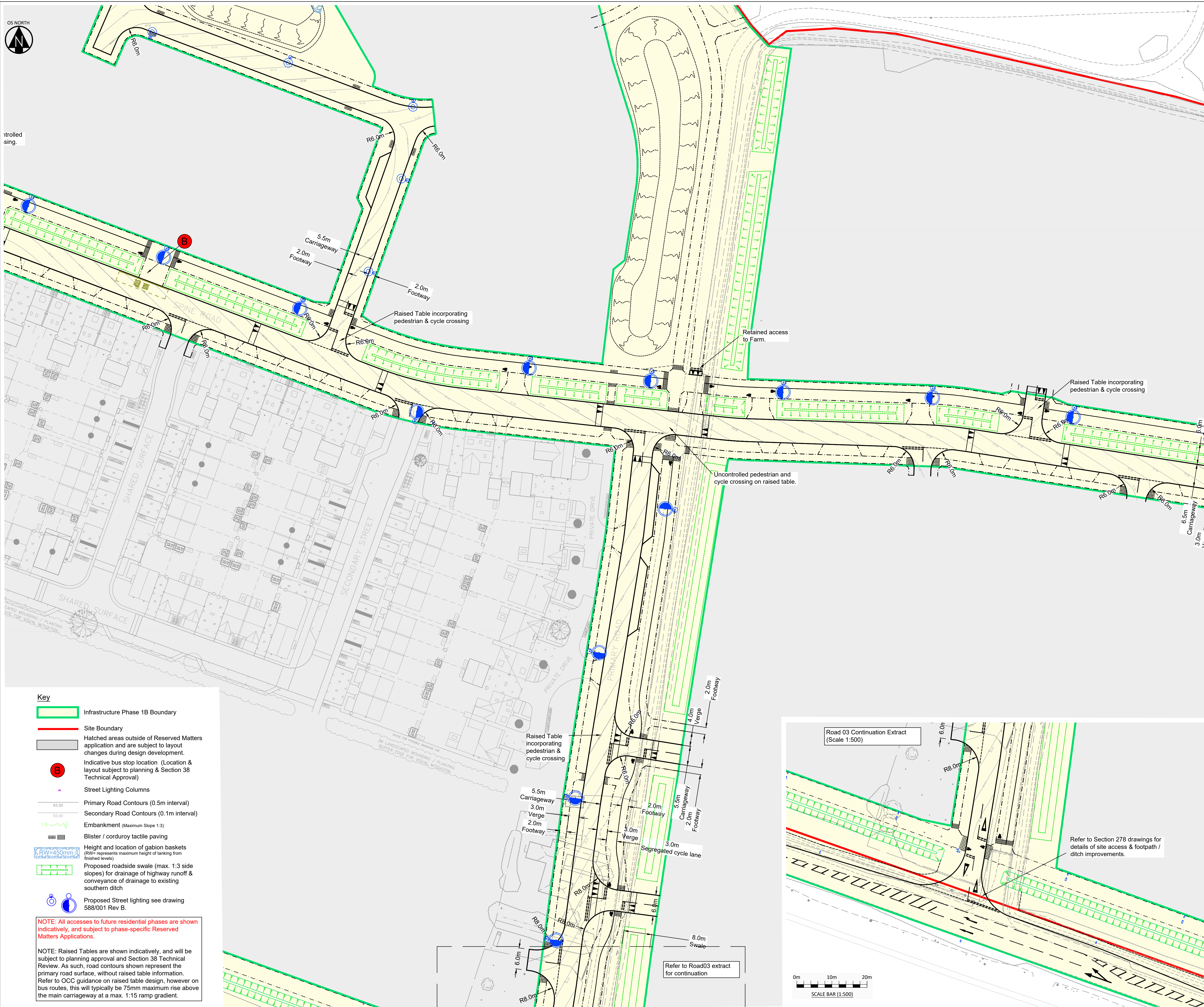


Controlled crossing



- NOTES:**
- All levels relate to the survey which is to Ordnance datum. Dimensions not to be scaled.
 - Street lighting, illuminated traffic signs, bollards and associated works shall comply with Oxfordshire Council 'Specification for Street Lighting'.
 - Use of this drawing does not absolve the client from his responsibilities under the Health and Safety, The Construction Design and Management Regulations 2015. The Principal Designer is required to contact Hydrock Consultants prior to permitting this drawing to be used in connection with any construction works.
 - This drawing is based on the latest Architects design layout received.

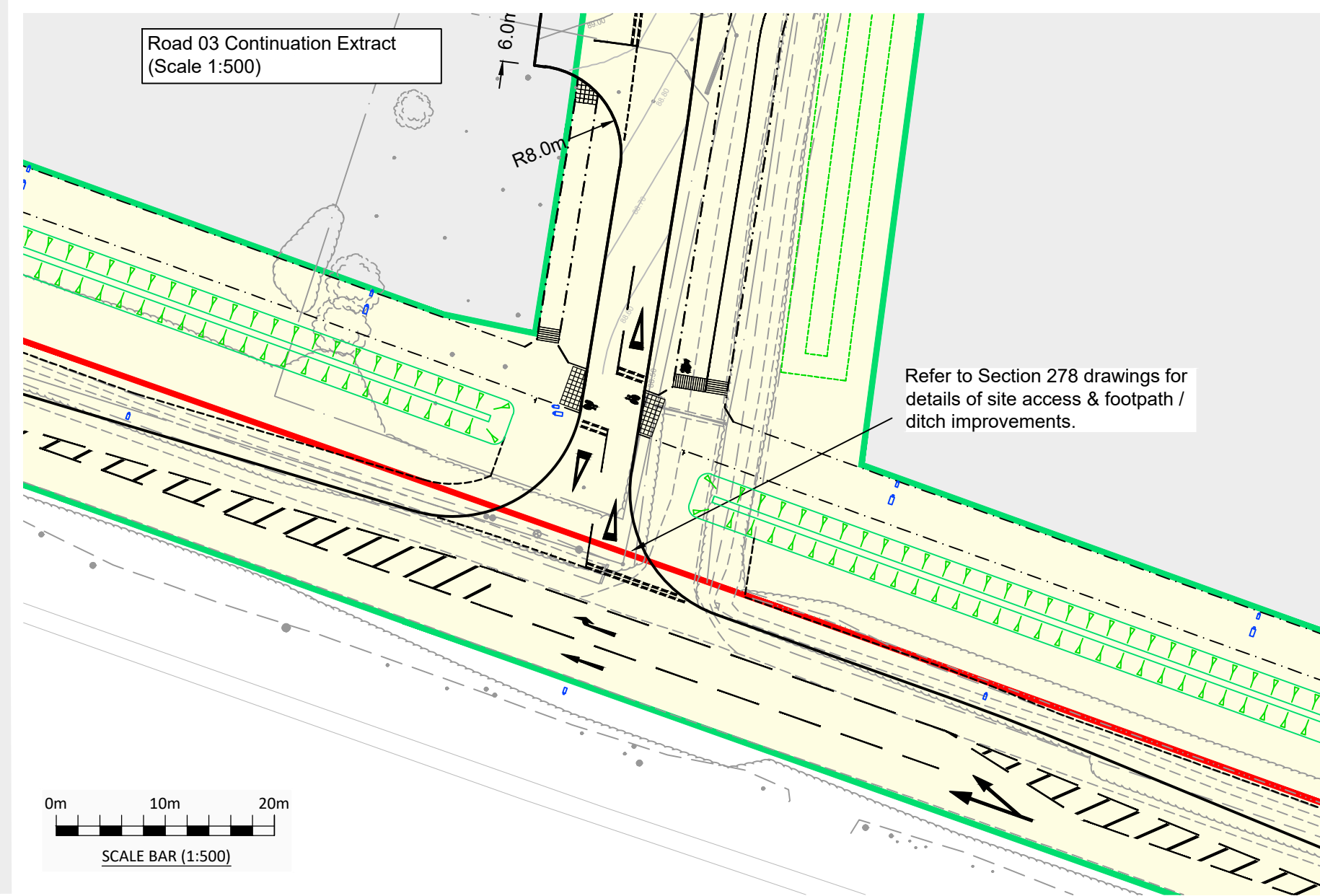
REVISIONS

Rev	Date	Description	By	Ckd	App
P10	07/06/24	Phase 1B boundary amended. Shared pedestrian / cycle crossing added to layout.	RAP	AB	RJP
P09	17/05/24	Phase 1B boundary Amended.	RP	RJP	RJP
P08	17/05/24	Updated to suit include cycleway/footway setbacks, revised facilities, amended bus stops	BT	RJP	OD
P07	15/03/24	Amended to suit updated phase 2A layout.	BT	JAC	-
P06	27/02/24	Junction accesses to mixed use parcels added.	JC	JC	JAC
P05	09/02/24	Amended to suit updated layout & Cala comments	BT	RA	-
P04	19/01/24	Amended to suit updated layout	BT	JAC	RA
P03	04/12/23	Amended to suit updated Spine Road arrangement	BT	GH	-
P02	31/05/23	Issued for Planning.	JL	BT	BT
P01	06/04/23	First Issue.	BT	RA	RA

- Key**
- Infrastructure Phase 1B Boundary
 - Site Boundary
 - Hatched areas outside of Reserved Matters application and are subject to layout changes during design development.
 - Indicative bus stop location (Location & layout subject to planning & Section 38 Technical Approval)
 - Street Lighting Columns
 - Primary Road Contours (0.5m interval)
 - Secondary Road Contours (0.1m interval)
 - Embankment (Maximum Slope 1:3)
 - Blister / corduroy tactile paving
 - Height and location of gabion baskets (RWL represents maximum height of tanking from finished levels)
 - Proposed roadside swale (max. 1:3 side slopes) for drainage of highway runoff & conveyance of drainage to existing southern ditch
 - Proposed Street lighting see drawing 588/001 Rev B.

NOTE: All accesses to future residential phases are shown indicatively, and subject to phase-specific Reserved Matters Applications.

NOTE: Raised Tables are shown indicatively, and will be subject to planning approval and Section 38 Technical Review. As such, road contours shown represent the primary road surface, without raised table information. Refer to OGC guidance on raised table design, however on bus routes, this will typically be 75mm maximum rise above the main carriageway at a max. 1:15 ramp gradient.



Hydrock

OVER COURT BARNS
OVER LAKE
ALMONDSBURY
BRISTOL
BS32 4DF
T: +44 (0) 1454 619533
e: bristol@hydrock.com

CLIENT
CALA HOMES COTSWOLDS LTD

PROJECT
HIMLEY VILLAGE, BICESTER

TITLE
PHASE 1B
ENGINEERING LAYOUT
SHEET 3 OF 4

HYDROCK PROJECT NO. C-27141-C	SCALE @ A1 1 : 500	STATUS S2
STATUS DESCRIPTION PLANNING	DRAWING NO. (PROJECT CODE-ORIGINATOR-ZONE-LEVEL-TYPE-ROLE-NUMBER) 27141-HYD-1B-XX-DR-C-2202	REVISION P10