

Water Eaton

PR6a : Land East of Oxford Road

Photomontages

Bellway


STRATEGIC
LAND



CHRIST CHURCH
UNIVERSITY OF OXFORD

WE / LAN2 / P02



To be viewed at comfortable arm's length



Massing Models are shown as proposed parameters +2m height due to potential groundworks

To be viewed at comfortable arm's length



Massing Models are shown as proposed parameters +2m height due to potential groundworks

To be viewed at comfortable arm's length



Parameter Visualisations are shown as proposed parameters +2m height due to potential groundworks. Heights and corresponding colours shown to be read in conjunction with the Building Height Parameter Plan (reference: 477898-33T)

To be viewed at comfortable arm's length



Parameter Visualisations are shown as proposed parameters +2m height due to potential groundworks. Heights and corresponding colours shown to be read in conjunction with the Building Height Parameter Plan (reference: 477898-33T)

To be viewed at comfortable arm's length



To be viewed at comfortable arm's length



Massing Models are shown as proposed parameters +2m height due to potential groundworks

To be viewed at comfortable arm's length



Massing Models are shown as proposed parameters +2m height due to potential groundworks

To be viewed at comfortable arm's length



Parameter Visualisations are shown as proposed parameters +2m height due to potential groundworks. Heights and corresponding colours shown to be read in conjunction with the Building Height Parameter Plan (reference: 477898-33T)

To be viewed at comfortable arm's length



Parameter Visualisations are shown as proposed parameters +2m height due to potential groundworks. Heights and corresponding colours shown to be read in conjunction with the Building Height Parameter Plan (reference: 477898-33T)

To be viewed at comfortable arm's length



To be viewed at comfortable arm's length



Massing Models are shown as proposed parameters +2m height due to potential groundworks

To be viewed at comfortable arm's length



Massing Models are shown as proposed parameters +2m height due to potential groundworks

To be viewed at comfortable arm's length



Parameter Visualisations are shown as proposed parameters +2m height due to potential groundworks. Heights and corresponding colours shown to be read in conjunction with the Building Height Parameter Plan (reference: 477898-33T)

To be viewed at comfortable arm's length



Parameter Visualisations are shown as proposed parameters +2m height due to potential groundworks. Heights and corresponding colours shown to be read in conjunction with the Building Height Parameter Plan (reference: 477898-33T)

To be viewed at comfortable arm's length



To be viewed at comfortable arm's length



Massing Models are shown as proposed parameters +2m height due to potential groundworks

To be viewed at comfortable arm's length



Massing Models are shown as proposed parameters +2m height due to potential groundworks

To be viewed at comfortable arm's length



Parameter Visualisations are shown as proposed parameters +2m height due to potential groundworks. Heights and corresponding colours shown to be read in conjunction with the Building Height Parameter Plan (reference: 477898-33T)

To be viewed at comfortable arm's length



Parameter Visualisations are shown as proposed parameters +2m height due to potential groundworks. Heights and corresponding colours shown to be read in conjunction with the Building Height Parameter Plan (reference: 477898-33T)

To be viewed at comfortable arm's length



To be viewed at comfortable arm's length



Massing Models are shown as proposed parameters +2m height due to potential groundworks

To be viewed at comfortable arm's length



Massing Models are shown as proposed parameters +2m height due to potential groundworks

To be viewed at comfortable arm's length



Parameter Visualisations are shown as proposed parameters +2m height due to potential groundworks. Heights and corresponding colours shown to be read in conjunction with the Building Height Parameter Plan (reference: 477898-33T)

To be viewed at comfortable arm's length



Parameter Visualisations are shown as proposed parameters +2m height due to potential groundworks. Heights and corresponding colours shown to be read in conjunction with the Building Height Parameter Plan (reference: 477898-33T)

To be viewed at comfortable arm's length

Plans

Plan EDP 1: Site Boundaries and Location
(edp5650_d015c 16 January 2023 GYo/LTi)

Plan EDP 2: Topography
(edp5650_d013c 16 January 2023 JFr/BCo)

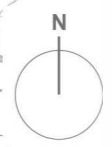
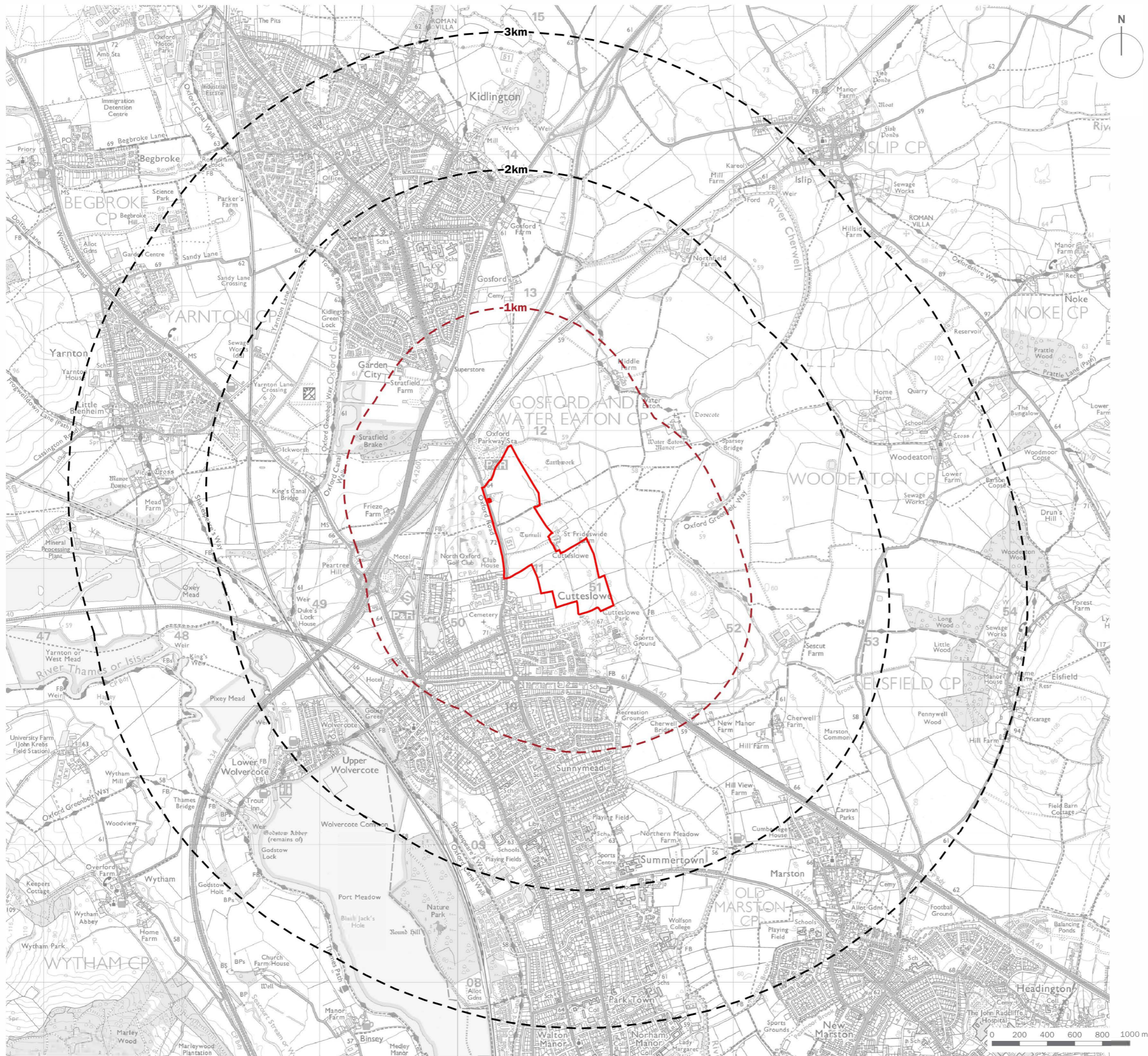
Plan EDP 3: Site Character and Context
(edp5650_d016b 16 January 2023 GYo/LTi)

Plan EDP 4: Environmental Planning Context
(edp5650_d010e 22 November 2023 JFr/BCo)

Plan EDP 5: Published Landscape Character
(edp5650_d009d 16 January 2023 JFr/BCo)

Plan EDP 6: Site Visibility Plan
(edp5650_d008f 17 January 2023 JFr/BCo)

Plan EDP 7: Illustrative Landscape Strategy Plan
(edp5650_d029j 23 January 2024 LTi/Est)



- Site Boundary
- Range Rings (at 1km intervals)
- 1km Detailed Study Area

client
Bellway Homes Limited and Christ Church, Oxford

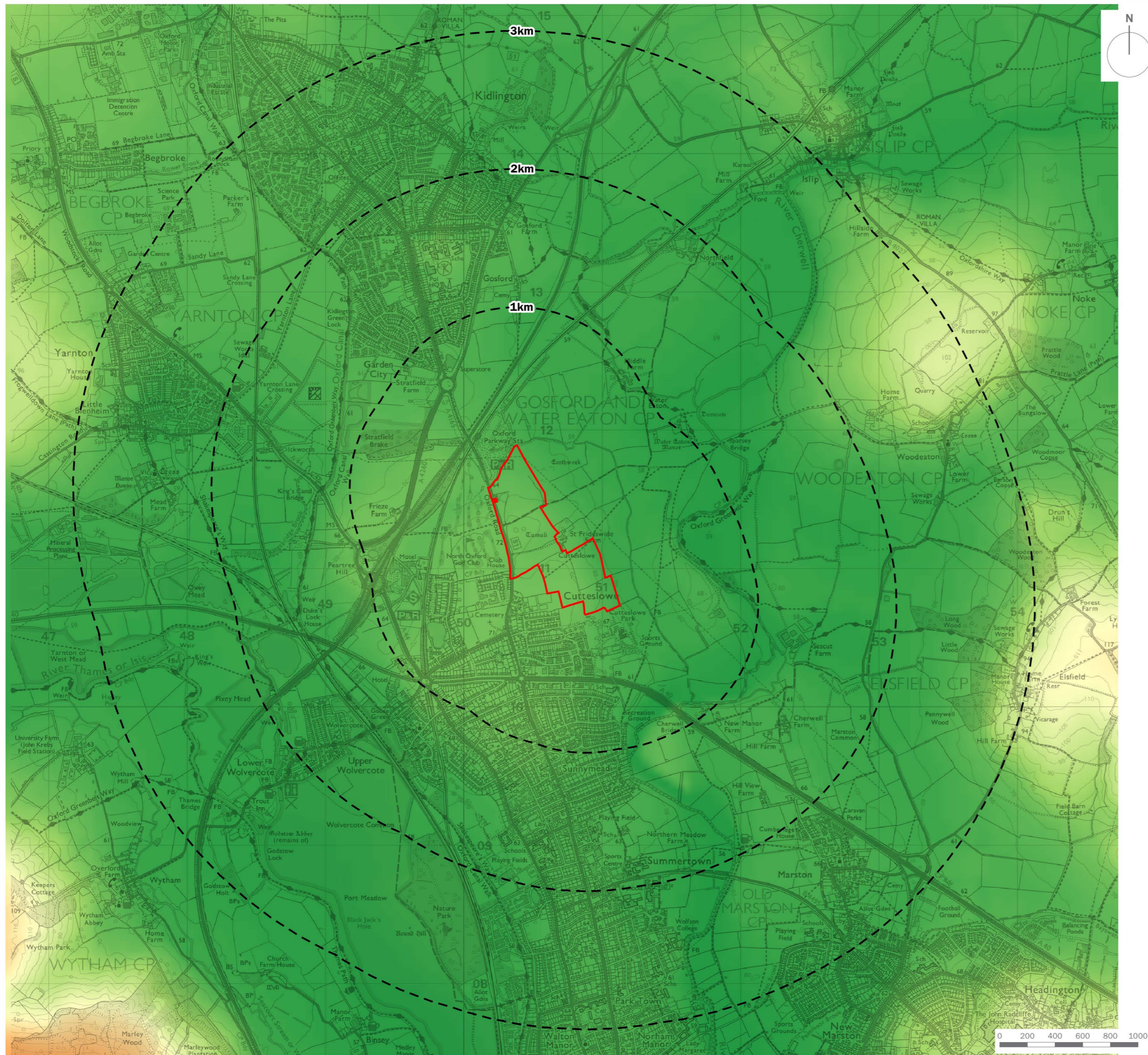
project title
Water Eaton


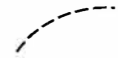
drawing title
Site Boundaries and Location

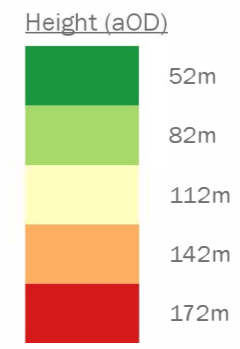
date **16 JANUARY 2023** drawn by **Gyo**
drawing number **edp5650_d015c** checked **LTI**
scale **1:27,500 @ A3** QA **RBa**



Registered office: 01285 740427 - www.edp-uk.co.uk - info@edp-uk.co.uk



-  Site Boundary
-  Range Rings (at 1km intervals)



client
Bellway Homes Limited and Christ Church, Oxford

project title
Water Eaton

drawing title
Topography

date **16 JANUARY 2023** drawn by **JFr**
drawing number **edp5650_d013c** checked **BCo**
scale **1:27,500 @ A3** QA **RBa**



Registered office: 01285 740427 - www.edp-uk.co.uk - info@edp-uk.co.uk