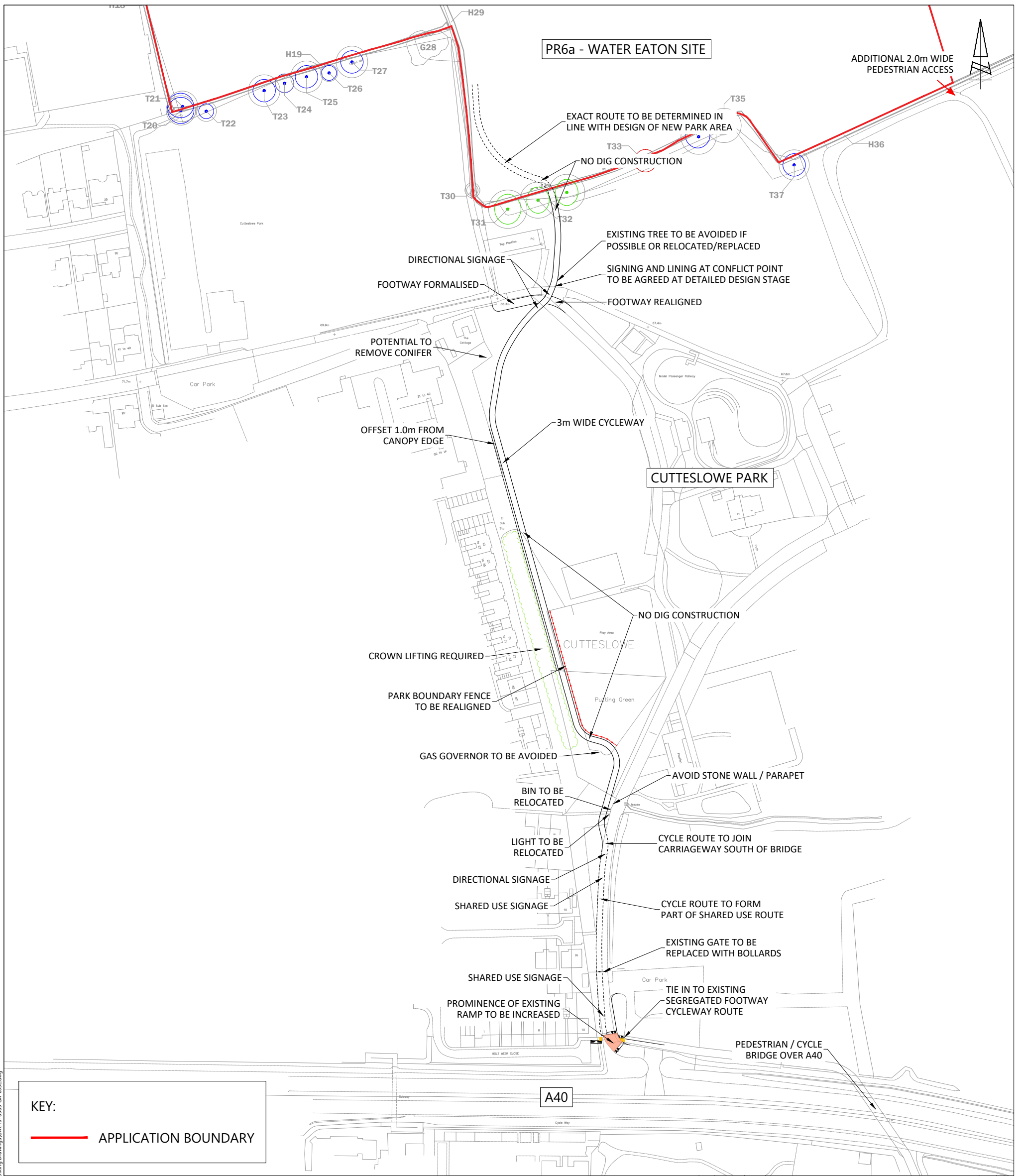
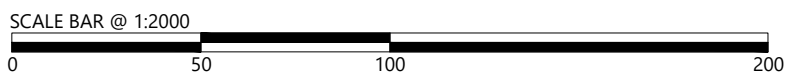


APPENDIX F. Cutteslowe Park Cycle Link



KEY:
 APPLICATION BOUNDARY



REPRODUCED FROM THE ORDNANCE SURVEY MAP WITH THE PERMISSION OF THE CONTROLLER OF HER MAJESTY'S STATIONERY OFFICE. LICENCE No. 100044286. © CROWN COPYRIGHT RESERVED.

DRAWING ISSUED FOR FEASIBILITY CONSIDERATION AND PLANNING PURPOSES ONLY. DRAWING NOT TO BE USED FOR CONSTRUCTION. I-TRANSPORT LLP ACCEPT NO RESPONSIBILITY FOR ERRORS MADE BY OTHERS IN SCALING FROM THIS DRAWING. MEASUREMENTS SHOULD BE TAKEN FROM FIGURED DIMENSIONS ONLY. CDM REQUIREMENTS CONSIDERED AT FEASIBILITY STAGE ONLY. FURTHER CONSIDERATION REQUIRED BY DETAILED DESIGN TEAM.

CLIENT:
BELLWAY HOMES

REV	DATE	BY	DESCRIPTION	CHK	APD
E	15.03.23	JD	MINOR AMENDMENT TO CYCLE ROUTE ALIGNMENT	JDW	JDW
D	30.01.23	SH	CLIENT UPDATED	JDW	JDW
C	25.07.22	MM	FURTHER AMENDMENTS TO CYCLE ROUTE ALIGNMENT	JDW	JDW
B	13.05.22	MM	MINOR AMENDMENT TO CYCLE ROUTE ALIGNMENT	JDW	JDW
A	19.04.22	JMc	MINOR AMENDMENT TO CYCLE ROUTE ALIGNMENT	JDW	JDW

STATUS: FOR INFORMATION		
DRAWN: PH	CHECKED: JDW	APPROVED: JDW
PROJECT No: ITB16565	SCALE @ A3: 1:2000	DATE: 20.01.22
DRAWING No: ITB16565-GA-003		REV: E



The Square, Basing View,
 Basingstoke, Hampshire, RG21 4EB
 www.i-transport.co.uk

Tel: 01256 637940

TITLE:
CUTTESLOWE PARK POTENTIAL CYCLE ROUTE

PROJECT:
WATER EATON (PR6A)

T:\Project\16000_Series\16565\ITB - North Oxford - Policy PR6a - Land Use of Oxford Road\Tech\Acad\Transport Drawings\Working\Drawings\GA\ITB16565-GA-003E.dwg

APPENDIX G. Bus Service Information



Correct at time of print; June 2023



For more detailed journey planning and real-time updates
download the Stagecoach Bus App.



Bus Service Summary

Bus Stop	Service No.	Route	Service Frequency		
			Monday-Friday	Saturday	Sunday
Oxford Parkway	2	Kidlington – Oxford City Centre	Service every 20 minutes (first service at 04:54, last service at 20:25)	Service every 20 minutes (first service at 05:26, last service at 20:21)	Service every 20-30 minutes (first service 06:41, last service at 20:22)
	2A	Kidlington – Oxford City Centre	Service every 20-30 minutes (first service at 05:09, last service at 20:10)	Service every 20-30 minutes (first service at 05:56, last service at 20:21)	Service every 30 minutes (first service at 06:41, last service at 18:41)
	7 Gold	Oxford - Woodstock	Service every 30 minutes (first service at 05:48, last service at 00:33)	Service every 30 minutes (first service at 07:19, last service at 00:33)	Service every 30 minutes (first service at 08:19, last service at 00:33)
	700	Churchill Hospital - Kidlington	Service every 30 minutes (first service at 06:51, last service at 20:36)	-	-
	N2	Kidlington – Oxford City Centre	Two services at 01:42 and 02:12 (excludes Friday)	Services at 01:42, 02:12, 02:42 and 03:42 (includes Friday)	-
	NS5 Gold	Oxford - Bicester	Friday service at 01:30, 02:00, 03:00 and 03:30.	Services at 01:30, 02:00, 03:00 and 03:30.	-
	S4 Gold	Oxford - Banbury	Hourly services (first service at 07:28, last service at 23:15)	Hourly service (first service at 08:38, last service at 23:15)	Service every 90 minutes (first service at 10:16, last service at 19:16)
	S5 Gold	Oxford - Bicester	Service every 20-30 minutes (first service at 06:32, last service at 00:30)	Service every 20-30 minutes (first service at 07:12, last service at 01:00)	Service every 30 minutes (first service at 09:28, last service at 00:06)
Jordan Hill	2	Kidlington – Oxford City Centre	Service every 20-30 minutes (first service at 04:54, last service at 01:14)	Service every 20-30 minutes (first service at 05:28, last service at 01:14)	Service every 20-30 minutes (first service at 06:43, last service at 00:24)

Bus Stop	Service No.	Route	Service Frequency		
			Monday-Friday	Saturday	Sunday
	2A	Kidlington – Oxford City Centre	Service every 20-30 minutes (first service at 05:12, last service at 22:09)	Service every 20 - 30 minutes (first service at 05:58, last service at 22:09)	Service every 30 minutes (first service at 07:13, last service at 18:44)
	N2	Kidlington – Oxford City Centre	Two services at 01:44 and 02:14 (excludes Friday)	Services at 01:44, 02:14, 02:44 and 03:44 (includes Friday)	-
	7 Gold	Oxford - Woodstock	Service every 30 minutes (first service at 05:46, last service at 23:31)	Service every 30 minutes (first service at 07:17, last service at 00:31)	Service every 30 minutes (first service at 08:17, last service at 00:01)
	700	Churchill Hospital - Kidlington	Service every 30 minutes (first service at 06:47, last service at 20:52)	-	-
	NS5 Gold	Oxford - Bicester	Friday service at 01:28, 01:58, 02:58 and 03:28.	Services at 01:28, 01:58, 02:58 and 03:28.	-
	S4 Gold	Oxford - Banbury	Hourly services (first service at 07:26, last service at 23:13)	Hourly service (first service at 08:36, last service at 23:13)	Service every 90 minutes (first service at 10:14, last service at 19:14)
	S5 Gold	Oxford - Bicester	Service every 20-30 minutes (first service at 06:30, last service at 00:28)	Service every 20-30 minutes (first service at 07:10, last service at 00:58)	Service every 30 minutes (first service at 09:26, last service at 00:04)

Source: Bustimes.org

1.1.1 **Table 3.2** summarises the key destinations that are accessible via bus.

Table 3.2: Key Destinations accessible via bus

Destination	Accessible via Bus		Facilities at Destination	Journey Time
	Direct	Change		
Yarnton	✘	✓	Oxford Industrial Park, Begbroke Science Park, William Fletcher Primary School	37 minutes

Destination	Accessible via Bus		Facilities at Destination	Journey Time
	Direct	Change		
Headington	✓	✓	John Radcliffe Hospital, Baynards Hill Primary School, Barton Leisure Centre, Headington Shops	38 minutes
North Oxford / Summertown	✓	✗	Wychwood School, Dragon School, The Cherwell School, Ferry Leisure Centre, Summertown Health Centre	21 minutes
Oxford City Centre	✓	✓	Oxford City Centre Shops, University of Oxford, Oxford Railway Station, Westgate Shopping Centre, Oxford Ice Rink	31 minutes
Bicester	✓	✗	Bicester Town Centre, Bicester Leisure Centre, Launton Business Centre, Telford Industrial Estate, The Bicester School	31 minutes
Kidlington	✓	✗	Glenmore Business Park, Oxford Motor Park, Oxford International Airport, Kidlington Village Shops, Kidlington & Cosford Leisure Centre, St Thomas More Catholic Primary School	13 minutes
Osney	✓	✓	Little Mead Business Park, Osney Mead Industrial Estate, Osney Marina, Waitrose & Partners, Meadowside Retail Park	35 minutes
Botley	✗	✓	Botley School, Botley Medical Centre, Seacourt Tower Retail Park, Curtis Industrial Estate	40 minutes
Witney	✗	✓	Witney Town Centre, Cineworld Cinema, Marriotts Walk Shopping Centre, Woolgate Shopping Centre	50 minutes

Source: Traveline

Note: Destinations that include more than one change or exceed 50 minutes travel time have not been included.

- 1.1.2 In summary, Oxford Road forms a high frequency bus corridor with bus services throughout the day linking the site with a number of key destinations including Oxford city centre, Churchill Hospital, John Radcliffe Hospital and Kidlington.