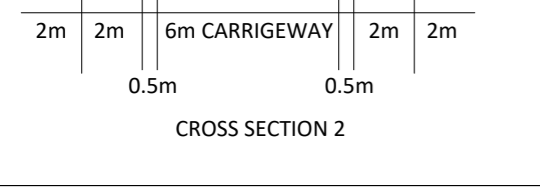
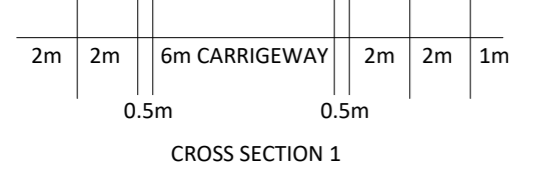
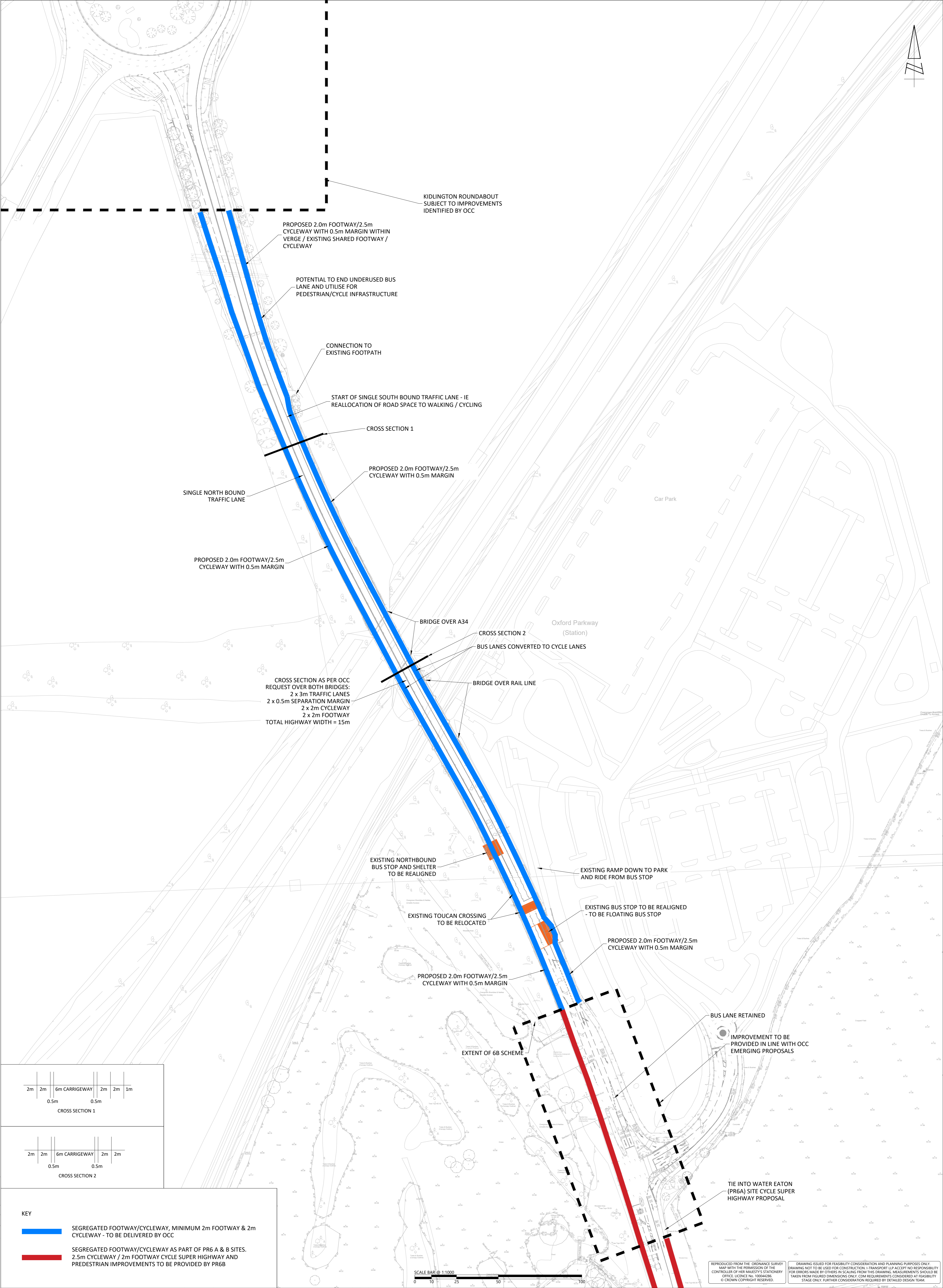


**APPENDIX L.** Potential Improvements to Oxford Road / Banbury Road between the Site and Kidlington Roundabout and the Site and Cutteslowe Roundabout



**KEY**

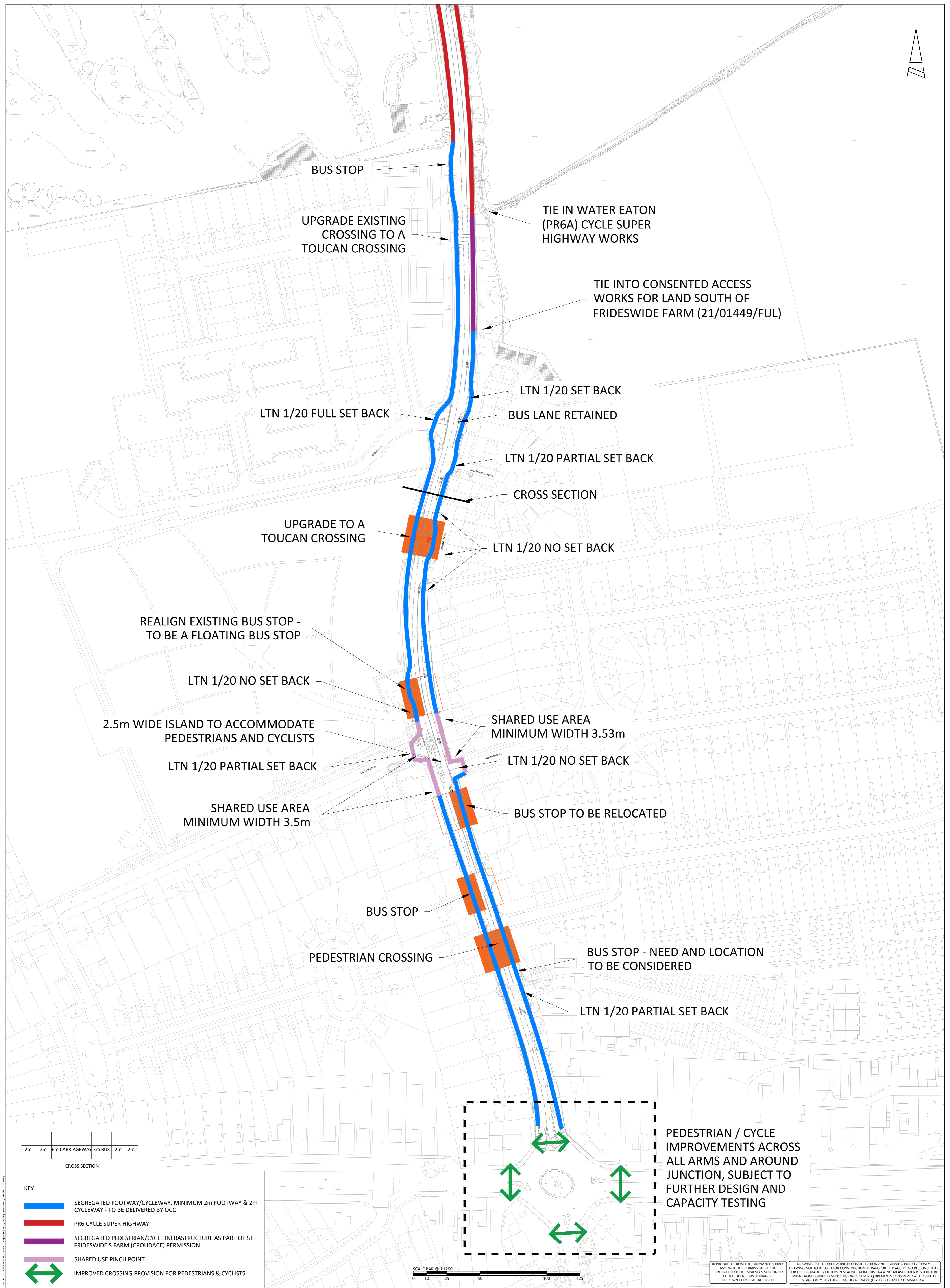
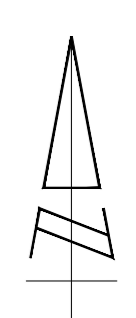
- SEGREGATED FOOTWAY/CYCLEWAY, MINIMUM 2m FOOTWAY & 2m CYCLEWAY - TO BE DELIVERED BY OCC
- SEGREGATED FOOTWAY/CYCLEWAY AS PART OF PR6 A & B SITES. 2.5m CYCLEWAY / 2m FOOTWAY CYCLE SUPER HIGHWAY AND PEDESTRIAN IMPROVEMENTS TO BE PROVIDED BY PR6B

SCALE BAR @ 1:1000

REPRODUCED FROM THE ORDINANCE SURVEY MAP WITH THE PERMISSION OF THE CONTROLLER OF HER MAJESTY'S STATIONERY OFFICE. LICENCE NO. 10004236. © CROWN COPYRIGHT RESERVED.

DRAWING ISSUED FOR FEASIBILITY CONSIDERATION AND PLANNING PURPOSES ONLY. DRAWING NOT TO BE USED FOR CONSTRUCTION. I-TRANSPORT LLP ACCEPTS NO RESPONSIBILITY FOR ERRORS MADE BY OTHERS IN SCALING FROM THIS DRAWING. MEASUREMENTS SHOULD BE TAKEN FROM FIGURED DIMENSIONS ONLY. CDM REQUIREMENTS CONSIDERED AT FEASIBILITY STAGE ONLY. FURTHER CONSIDERATION REQUIRED BY DETAILED DESIGN TEAM.

<p>The Square, Basing View, Basingstoke, Hampshire, RG21 4EB Tel: 01256 637940 www.i-transport.co.uk</p>		<p>FOR INFORMATION</p>		<p>TITLE: CONCEPT SKETCH DRAWING POTENTIAL IMPROVEMENTS TO PEDESTRIAN AND CYCLE LINKS ALONG OXFORD ROAD FROM PARKWAY PARK &amp; RIDE JUNCTION TO THE KIDLINGTON ROUNDABOUT</p>		<p>DRAWN: JMC CHECKED: JDW APPROVED: JDW</p>	
<p>REV: DATE BY DESCRIPTION CHG: APC PROJECT</p>		<p>WATER EATON (PR6A)</p>		<p>CUSTOMER: BELLWAY HOMES</p>		<p>PROJECT NO: ITB16565 SCALE @ A1: 1:1000 DATE: 16.06.23</p>	
<p>STATUS: FOR INFORMATION</p>		<p>WATER EATON (PR6A)</p>		<p>BELLWAY HOMES</p>		<p>DRAWING NO: ITB16565 - SK - 073</p>	



BUS STOP

UPGRADE EXISTING CROSSING TO A TOUCAN CROSSING

TIE IN WATER EATON (PR6A) CYCLE SUPER HIGHWAY WORKS

TIE INTO CONSENTED ACCESS WORKS FOR LAND SOUTH OF FRIDESWIDE FARM (21/01449/FUL)

LTN 1/20 FULL SET BACK

LTN 1/20 SET BACK

BUS LANE RETAINED

LTN 1/20 PARTIAL SET BACK

CROSS SECTION

UPGRADE TO A TOUCAN CROSSING

LTN 1/20 NO SET BACK

REALIGN EXISTING BUS STOP - TO BE A FLOATING BUS STOP

LTN 1/20 NO SET BACK

2.5m WIDE ISLAND TO ACCOMMODATE PEDESTRIANS AND CYCLISTS

SHARED USE AREA MINIMUM WIDTH 3.53m

LTN 1/20 PARTIAL SET BACK

LTN 1/20 NO SET BACK

SHARED USE AREA MINIMUM WIDTH 3.5m

BUS STOP TO BE RELOCATED

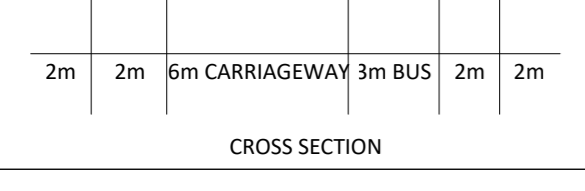
BUS STOP

PEDESTRIAN CROSSING

BUS STOP - NEED AND LOCATION TO BE CONSIDERED

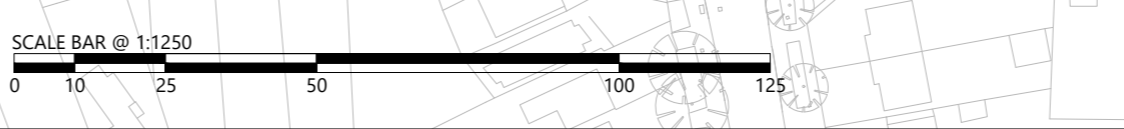
LTN 1/20 PARTIAL SET BACK

PEDESTRIAN / CYCLE IMPROVEMENTS ACROSS ALL ARMS AND AROUND JUNCTION, SUBJECT TO FURTHER DESIGN AND CAPACITY TESTING



**KEY**

- █ SEGREGATED FOOTWAY/CYCLEWAY, MINIMUM 2m FOOTWAY & 2m CYCLEWAY - TO BE DELIVERED BY OCC
- █ PR6 CYCLE SUPER HIGHWAY
- █ SEGREGATED PEDESTRIAN/CYCLE INFRASTRUCTURE AS PART OF ST FRIDESWIDE'S FARM (CROUDACE) PERMISSION
- █ SHARED USE PINCH POINT
- ↔ IMPROVED CROSSING PROVISION FOR PEDESTRIANS & CYCLISTS



REPRODUCED FROM THE ORDNANCE SURVEY MAP WITH THE PERMISSION OF THE CONTROLLER OF HER MAJESTY'S STATIONERY OFFICE. LICENSE NO. 100044236. © CROWN COPYRIGHT RESERVED.

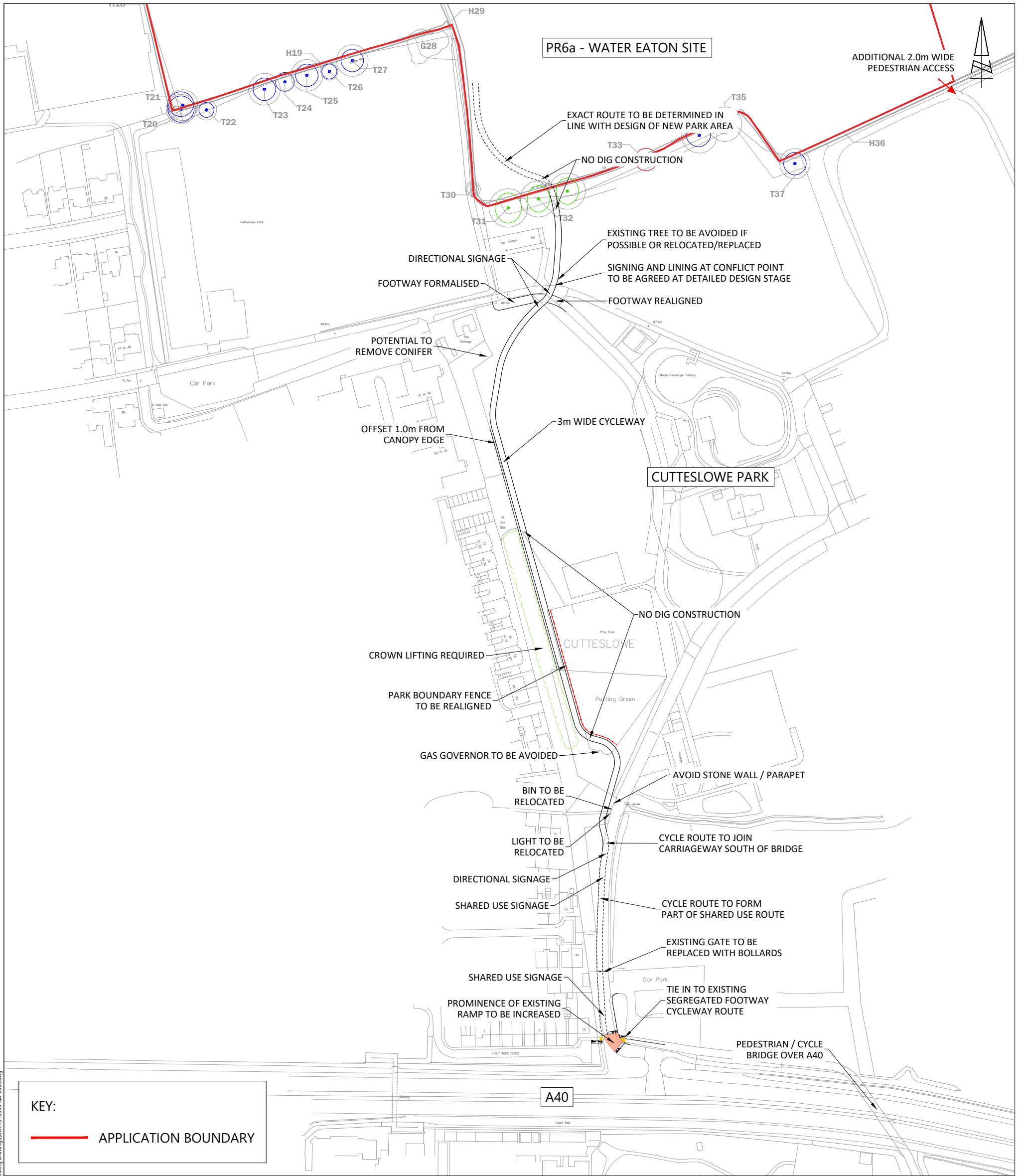
DRAWING ISSUED FOR FEASIBILITY CONSIDERATION AND PLANNING PURPOSES ONLY. DRAWING NOT TO BE USED FOR CONSTRUCTION. I-TRANSPORT LLP ACCEPTS NO RESPONSIBILITY FOR ERRORS MADE BY OTHERS IN SCALING FROM THIS DRAWING. MEASUREMENTS SHOULD BE TAKEN FROM FIGURED DIMENSIONS ONLY. CDM REQUIREMENTS CONSIDERED AT FEASIBILITY STAGE ONLY. FURTHER CONSIDERATION REQUIRED BY DETAILED DESIGN TEAM.



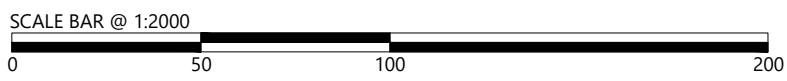
REV	DATE	BY	DESCRIPTION	CHK	APP	PROJECT	TITLE	CURT
			FOR INFORMATION			WATER EATON (PR6A)	POTENTIAL PEDESTRIAN AND CYCLIST IMPROVEMENTS SOUTH OF SITE ACCESS TO CUTTESLOWE ROUNDABOUT	BELLWAY HOMES

DRAWN:	JMC	CHECKED:	JDW	APPROVED:	JDW
PROJECT No:	ITB16565	SCALE @ A1:	1:1250	DATE:	16.02.23
DRAWING No:					
			ITB16565 - SK - 074		

## **APPENDIX M.** Potential Cutteslowe Park Cycle Link



**KEY:**  
— APPLICATION BOUNDARY



REPRODUCED FROM THE ORDNANCE SURVEY MAP WITH THE PERMISSION OF THE CONTROLLER OF HER MAJESTY'S STATIONERY OFFICE. LICENCE No. 100044286. © CROWN COPYRIGHT RESERVED.

DRAWING ISSUED FOR FEASIBILITY CONSIDERATION AND PLANNING PURPOSES ONLY. DRAWING NOT TO BE USED FOR CONSTRUCTION. I-TRANSPORT LLP ACCEPT NO RESPONSIBILITY FOR ERRORS MADE BY OTHERS IN SCALING FROM THIS DRAWING. MEASUREMENTS SHOULD BE TAKEN FROM FIGURED DIMENSIONS ONLY. CDM REQUIREMENTS CONSIDERED AT FEASIBILITY STAGE ONLY. FURTHER CONSIDERATION REQUIRED BY DETAILED DESIGN TEAM.

CLIENT: **BELLWAY HOMES**

REV	DATE	BY	DESCRIPTION	CHK	APD
D	15.03.23	JD	MINOR AMENDMENT TO CYCLE ROUTE ALIGNMENT	JDW	JDW
D	30.01.23	SH	CLIENT UPDATED	JDW	JDW
C	25.07.22	MM	FURTHER AMENDMENTS TO CYCLE ROUTE ALIGNMENT	JDW	JDW
B	13.05.22	MM	MINOR AMENDMENT TO CYCLE ROUTE ALIGNMENT	JDW	JDW
A	19.04.22	JMc	MINOR AMENDMENT TO CYCLE ROUTE ALIGNMENT	JDW	JDW

STATUS: **FOR INFORMATION**

DRAWN: PH	CHECKED: JDW	APPROVED: JDW
PROJECT No: ITB16565	SCALE @ A3: 1:2000	DATE: 20.01.22
DRAWING No: ITB16565-GA-003		REV: D



The Square, Basing View,  
 Basingstoke, Hampshire, RG21 4EB  
 www.i-transport.co.uk

Tel: 01256 637940

TITLE: **CUTTESLOWE PARK POTENTIAL CYCLE ROUTE**

PROJECT: **WATER EATON (PR6A)**

TVProject\16000\_Series\16565\ITB - North Oxford - Policy PR6a - Land Use of Oxford Road\Tech\Acad\Transport Drawings\Working\Drawings\GA\ITB16565-GA-003E.dwg

## **APPENDIX N.** Trip Generation Calculations

## Technical Note

Project No: ITB16565  
Project Title: Land East of Oxford Road – PR6a  
Title: Trip Generation Assumptions  
Ref: JDW/RS/ITB16565-022  
Date: 17 February 2022

### SECTION 1 Introduction

1.1 This technical note sets out the trip rate assumptions which have been made for the PR6 site. The assumptions which have been changed in comparison to the PR8 trip generation are presented below, however the principles of the trip generation should still be read in conjunction with the note prepared by IMA Transport Planning.

### SECTION 2 Trip Generation Assumptions

#### 2.1 Dwelling Numbers

2.1.1 For the purpose of deriving the trip rate, the PR6 sites has been treated as one site, as they will have very similar characteristics and local facilities, such as the local centre, and primary school will predominantly serve both sites. The following dwelling numbers have been considered for the PR6 sites. These are as follows:

- PR6a – Land East of Oxford Road – up to 800 dwellings
- PR6b – Land West of Oxford Road – 670 dwellings
- PR6 total – **1,470 dwellings**

#### 2.2 Person Trip Rates and Purpose

2.2.1 The person trip rates have remained the same, however the dwelling numbers have been updated to 1,470 in accordance with the potential development quantum.

2.2.2 Assumptions around the internalisation of secondary school trips have been removed as there is no planned secondary school education on site.

2.2.3 Assumptions around the internalisation of employment trips have been removed as there is no significant employment accommodated on site.

## 2.3 Employment / Work Assumptions

- 2.3.1 The proposed development does not include any employment within the proposed site. Therefore, any internal employment assumptions within the spreadsheet have been removed resulting in no internal employment trips.
- 2.3.2 The 2011 census journey to work information has been amended. Rather than using Cherwell 017, Oxford 001 has been used as this is the most representative area to the site.
- 2.3.3 The mode share assumptions to each MSOA employment destination has been chosen based on the location and accessibility to that destination. Each mode share has been chosen using a blended assumption taking consideration of the results from the Census 2011 journey to work data, and the ability to access the destination by sustainable modes both now and in the future. This therefore takes account of changing travel behaviour and the aspiration to promote trips by non car modes.

## 2.4 Education Assumptions

- 2.4.1 The secondary school demand has been removed due to their being no secondary school being provided on site. There will be a two-form entry primary school, accommodating circa 420 pupils.
- 2.4.2 The likely number of pupils has been calculated on the number of pupils for one to four bed properties. These numbers have been calculated using information from 'OCC Survey of New Housing' 2008 and PopCal.
- 2.4.3 For primary school trips, it is assumed that 10% of pupils from the site will travel to alternative primary schools off-site. The 10% of school spaces which would then be available, would be used by pupils which live off-site within local residential areas and would travel into PR6a.
- 2.4.4 Primary and secondary schools which residents of PR6A and B are likely to travel to have been derived on the basis of the proximity of the alternative provision to the site.
- 2.4.5 The mode of pupil trips to off site schools has been arrived at by giving consideration to the 2100 school census data, the age of students, available routes and the distance from the site.
- 2.4.6 The origin and mode of pupil trips from outside of the PR sites has been derived based on the population area, 2011 school census data, the age of students, available routes and the distance from the site.



## 2.5 **Leisure and Shopping Assumptions**

2.5.1 The distribution for the leisure trips have been updated based on the proximity to the closest leisure / shopping facilities, i.e there will be less propensity for residents to use services in Kidlington and any trips made to Kidlington and north of the site are more likely to be by cycle or public transport.

2.5.2 The mode share assumptions have been chosen on the basis of the route and likely journey time.

## 2.6 **School Staff Trips**

2.6.1 The number of school staff trips have been calculated for a two-form entry primary school, using the same assumptions in terms of the number of staff and their likely arrival and departure times.





EDUCATION ORIGIN & MODE SHARE

	Census Oxford 001 Destination Distribution	PR6 Assumed Destination Distribution - Primary School	PR6 Assumed Destination Distribution - Secondary School	PR6 Assumed Destination Distribution - Higher Education	PR6 Assumed Origin Distribution		Walk	Cycle	Pub Trans	Car Driver	Passenger	Total	Summary
Internal Site Trips					0.0%		70%	30%	0%	0%	0%	100%	
<b>Total Oxford</b>	11.1%	50.0%	0.0%	0.0%	50.0%								
Oxford 001 Wolvercote & Cutteslowe	1.0%	25.0%			25.0%	Assessment							
						Census Oxford 001 Mode Share	32%	24.7%	6.5%	33.8%	2.6%	100.0%	
						PR6 Assumed Mode Share	65.0%	10.0%	2.0%	20.0%	3.0%	100.0%	
Oxford 002 Sunnymead and Summertown	1.0%	25.0%			25.0%	Assessment							
						Census Oxford 001 Mode Share	24.4%	27.7%	10.9%	35.3%	1.7%	100.0%	
						PR6 Assumed Mode Share	65.0%	10.0%	2.0%	20.0%	3.0%	100.0%	
Oxford 003 North Oxford	0.2%				0.0%								
Oxford 004 Marston and New Marston	0.5%				0.0%	Assessment							
						Census Oxford 001 Mode Share							
						PR6 Assumed Mode Share							
Oxford 005 Barton	0.5%				0.0%	Assessment							
						Census Oxford 001 Mode Share							
						PR6 Assumed Mode Share							
Oxford 006 Headington	0.6%				0.0%	Assessment							
						Census Oxford 001 Mode Share							
						PR6 Assumed Mode Share							
Oxford 007 Risinghurst and Sandhills	0.8%				0.0%	Assessment							
						Census Oxford 001 Mode Share							
						PR6 Assumed Mode Share							
Oxford 008 City Centre	0.2%				0.0%	Assessment							
						Census Oxford 001 Mode Share							
						PR6 Assumed Mode Share							
Oxford 009 Osney, Jericho and Binsey	0.2%				0.0%	Assessment							
						Census Oxford 001 Mode Share							
						PR6 Assumed Mode Share							
Oxford 010 Between A4142 and A429	0.3%				0.0%	Assessment							
						Census Oxford 001 Mode Share							
						PR6 Assumed Mode Share							
Oxford 011 East Oxford between A4158 Iffley Road and A420	0.7%				0.0%	Assessment							
						Census Oxford 001 Mode Share							
						PR6 Assumed Mode Share							
Oxford 012 A4144 Abingdon Road	0.3%				0.0%	Assessment							
						Census Oxford 001 Mode Share							
						PR6 Assumed Mode Share							
Oxford 013 Between Cowley Road and The Slade	0.8%				0.0%	Assessment							
						Census Oxford 001 Mode Share							
						PR6 Assumed Mode Share							
Oxford 014 Around Iffley Road from Thames to Cowley Road	0.2%				0.0%	Assessment							
						Census Oxford 001 Mode Share							
						PR6 Assumed Mode Share							
Oxford 015 Cowley and Iffley	0.8%				0.0%	Assessment							
						Census Oxford 001 Mode Share							
						PR6 Assumed Mode Share							
Oxford 016 Littlemore and Rose Hill	1.2%				0.0%	Assessment							
						Census Oxford 001 Mode Share							
						PR6 Assumed Mode Share							
Oxford 017 Blackbird Leys	0.9%				0.0%	Assessment							
						Census Oxford 001 Mode Share							
						PR6 Assumed Mode Share							
Oxford 018 Greater Leys	0.7%				0.0%	Assessment							
						Census Oxford 001 Mode Share							
						PR6 Assumed Mode Share							
<b>Total Cherwell</b>	54.1%	50.0%	0.0%	0.0%	50.0%								
Cherwell 017 Kidlington North	18.4%				0.0%	Assessment							
						Census Oxford 001 Mode Share							
						PR6 Assumed Mode Share							
Cherwell 018 Kidlington South	10.4%	50.0%			50.0%	Assessment	0.0%	0.0%	40.0%	50.0%	10.0%	100.0%	
						Census Oxford 001 Mode Share	15.0%	15.0%	30.0%	30.0%	10.0%	100.0%	
						PR6 Assumed Mode Share							
Cherwell 019 (PR8) Begbroke and Yarnton	7.4%	0.0%			0.0%	Assessment							
						Census Oxford 001 Mode Share							
						PR6 Assumed Mode Share							
Rest of Cherwell	18.0%				0.0%	Assessment							
						Census Oxford 001 Mode Share							
						PR6 Assumed Mode Share							
South Oxfordshire	3.6%				0.0%	Assessment							
						Census Oxford 001 Mode Share							
						PR6 Assumed Mode Share							
Vale of White Horse	6.5%				0.0%	Assessment							
						Census Oxford 001 Mode Share							
						PR6 Assumed Mode Share							
West Oxfordshire	16.2%				0.0%	Assessment							
						Census Oxford 001 Mode Share							
						PR6 Assumed Mode Share							
Out of Oxfordshire	8.4%				0.0%	Assessment							
						Census Oxford 001 Mode Share							
						PR6 Assumed Mode Share							
<b>Total</b>	100.0%	100.0%	0.0%	0.0%	100.0%								

Employment Trip Distribution by Mode Share

	Walk	Cycle	Pub Trans	Car Driver	Passenger	Total
Internal Site Trips	0.0%	0.0%	0.0%	0.0%	0.0%	0.0%
<b>Oxford (Total)</b>	32.5%	5.0%	1.0%	10.0%	1.5%	50.0%
001	16.3%	2.5%	0.5%	5.0%	0.8%	25.0%
002	16.3%	2.5%	0.5%	5.0%	0.8%	25.0%
003	0.0%	0.0%	0.0%	0.0%	0.0%	0.0%
004	0.0%	0.0%	0.0%	0.0%	0.0%	0.0%
005	0.0%	0.0%	0.0%	0.0%	0.0%	0.0%
006	0.0%	0.0%	0.0%	0.0%	0.0%	0.0%
007	0.0%	0.0%	0.0%	0.0%	0.0%	0.0%
008	0.0%	0.0%	0.0%	0.0%	0.0%	0.0%
009	0.0%	0.0%	0.0%	0.0%	0.0%	0.0%
010	0.0%	0.0%	0.0%	0.0%	0.0%	0.0%
011	0.0%	0.0%	0.0%	0.0%	0.0%	0.0%
012	0.0%	0.0%	0.0%	0.0%	0.0%	0.0%
013	0.0%	0.0%	0.0%	0.0%	0.0%	0.0%
014	0.0%	0.0%	0.0%	0.0%	0.0%	0.0%
015	0.0%	0.0%	0.0%	0.0%	0.0%	0.0%
016	0.0%	0.0%	0.0%	0.0%	0.0%	0.0%
017	0.0%	0.0%	0.0%	0.0%	0.0%	0.0%
018	0.0%	0.0%	0.0%	0.0%	0.0%	0.0%
<b>Cherwell (Total)</b>	7.5%	7.5%	15.0%	15.0%	5.0%	50.0%
017	0.0%	0.0%	0.0%	0.0%	0.0%	0.0%
018	7.5%	7.5%	15.0%	15.0%	5.0%	50.0%
019	0.0%	0.0%	0.0%	0.0%	0.0%	0.0%
Rest of Cherwell	0.0%	0.0%	0.0%	0.0%	0.0%	0.0%
South Oxfordshire	0.0%	0.0%	0.0%	0.0%	0.0%	0.0%
Vale of White Horse	0.0%	0.0%	0.0%	0.0%	0.0%	0.0%
West Oxfordshire	0.0%	0.0%	0.0%	0.0%	0.0%	0.0%
Out of Oxfordshire	0.0%	0.0%	0.0%	0.0%	0.0%	0.0%
<b>Total</b>	40.0%	12.5%	16.0%	25.0%	6.5%	100.0%

**LEISURE DESTINATION & MODE SHARE**

Leisure Destination	Census Oxford 001 Destination Distribution (JTW)	PR6 Assumed Destination Distribution	Walk	Cycle	Pub Trans	Car Driver	Passenger	Total	Summary
Internal Site Trips	Local Centre	5%	70.0%	30.0%	0.0%	0.0%	0.0%	100.0%	
<b>Total Oxford</b>		<b>64.6%</b>	<b>72.0%</b>						
Oxford 001 Wolvercote & Cutteslowe	Cutteslowe and Sunnymead Park	3.3%	3.0%	Assessment					
				Census Oxford 001 Mode Share	32%	24.7%	6.5%	33.8%	2.6%
Oxford 002 Sunnymead and Summertown	Ferry Leisure Centre	5.0%	3.0%	Assessment					
				Census Oxford 001 Mode Share	24.4%	27.7%	10.9%	35.3%	1.7%
Oxford 003 North Oxford	Port Meadow	4.3%	1.0%	Assessment					
				Census Oxford 001 Mode Share	10.8%	30.4%	22.5%	34.3%	2.0%
Oxford 004 Marston and New Marston	Marston Road Sports Ground	0.4%	1.0%	Assessment					
				Census Oxford 001 Mode Share	0.0%	10.0%	10.0%	80.0%	0.0%
Oxford 005 Barton		0.4%	1.0%	Assessment					
				Census Oxford 001 Mode Share	0.0%	10.0%	0.0%	90.0%	0.0%
Oxford 006 Headington	Milham Ford Nature Park	5.4%	1.0%	Assessment					
				Census Oxford 001 Mode Share	6.3%	21.3%	16.5%	52.8%	3.1%
Oxford 007 Risingshurst and Sandhills	CS Lewis Nature Reserve	0.7%	1.0%	Assessment					
				Census Oxford 001 Mode Share	0.0%	12.5%	6.3%	68.8%	12.5%
Oxford 008 City Centre	Tourist Sites in Central Oxford e.g. University, Cathedral etc	25.6%	50.0%	Assessment					
				Census Oxford 001 Mode Share	5.1%	40.1%	38.0%	14.9%	1.8%
Oxford 009 Osney, Jericho and Binsey	Oxford Golf Centre	5.2%	2.0%	Assessment					
				Census Oxford 001 Mode Share	8.3%	36.4%	30.6%	22.3%	2.5%
Oxford 010 Between A4142 and A429	Magdalen Woods	3.7%	1.0%	Assessment					
				Census Oxford 001 Mode Share	1.16%	26.74%	17.4%	48.8%	5.8%
Oxford 011 East Oxford between A4158 Iffley Road and A420	Iffley Road Sports Centre	2.3%	1.0%	Assessment					
				Census Oxford 001 Mode Share	5.45%	25.45%	21.8%	43.6%	3.6%
Oxford 012 A4144 Abingdon Road	South Oxford Adventure Playground	0.2%	1.0%	Assessment					
				Census Oxford 001 Mode Share	0.00%	60.00%	0.0%	40.0%	0.0%
Oxford 013 Between Cowley Road and The Stade	Oxford Golf Club	3.3%	1.0%	Assessment					
				Census Oxford 001 Mode Share	0.00%	15.58%	11.7%	66.2%	6.5%
Oxford 014 Around Iffley Road from Thames to Cowley Road	Aston's Eyot Nature Reserve	0.3%	1.0%	Assessment					
				Census Oxford 001 Mode Share	0.00%	0.00%	0.0%	80.0%	20.0%
Oxford 015 Cowley and Iffley	Florence Park	2.4%	1.0%	Assessment					
				Census Oxford 001 Mode Share	3.64%	12.73%	16.4%	61.8%	5.5%
Oxford 016 Littlemore and Rose Hill	Oxford United FC - Kassam Stadium	1.2%	1.0%	Assessment					
				Census Oxford 001 Mode Share	0.00%	15.38%	11.5%	73.1%	0.0%
Oxford 017 Blackbird Leys	Leys Pools and Leisure Centre	0.5%	1.0%	Assessment					
				Census Oxford 001 Mode Share	0.00%	0.00%	8.3%	83.3%	8.3%
Oxford 018 Greater Leys	Gillians Park	0.4%	1.0%	Assessment					
				Census Oxford 001 Mode Share	10.00%	10.00%	20.0%	60.0%	0.0%
<b>Total Cherwell</b>		<b>7.3%</b>	<b>12.0%</b>						
Cherwell 017 Kidlington North	Kidlington Football Club	0.5%	2.0%	Assessment					
				Census Oxford 001 Mode Share	0.0%	23.1%	38.5%	30.8%	7.7%
Cherwell 018 Kidlington South	Gosford All Blacks RFC	0.4%	3.0%	Assessment					
				Census Oxford 001 Mode Share	0.0%	0.0%	40.0%	50.0%	10.0%
Cherwell 019 (PR6) Begbroke and Yarnton		3.2%	2.0%	Assessment					
				Census Oxford 001 Mode Share	0.0%	14.5%	26.3%	52.6%	6.6%
Rest of Cherwell		3.2%	5.0%	Assessment					
				Census Oxford 001 Mode Share	1.3%	5.3%	12.0%	77.3%	4.0%
South Oxfordshire		3.7%	2.0%	Assessment					
				Census Oxford 001 Mode Share	6.9%	2.3%	8.0%	74.7%	8.0%
Vale of White Horse		5.4%	2.0%	Assessment					
				Census Oxford 001 Mode Share	0.8%	4.8%	13.6%	78.4%	2.4%
West Oxfordshire		3.8%	2.0%	Assessment					
				Census Oxford 001 Mode Share	0.0%	3.4%	4.5%	92.0%	0.0%
Out of Oxfordshire		15.2%	5.0%	Assessment					
				Census Oxford 001 Mode Share	3.3%	2.2%	33.5%	59.8%	1.1%
<b>Total</b>		<b>100.0%</b>	<b>100.0%</b>						

**Leisure Trip Distribution by Mode Share**

	Walk	Cycle	Pub Trans	Car Driver	Passenger	Total
Internal Site Trips	3.5%	1.5%	0.0%	0.0%	0.0%	5.0%
<b>Oxford (Total)</b>	<b>2.1%</b>	<b>14.1%</b>	<b>38.9%</b>	<b>13.2%</b>	<b>3.8%</b>	<b>72.0%</b>
001	1.4%	0.9%	0.3%	0.2%	0.2%	3.0%
002	0.8%	0.9%	0.9%	0.3%	0.2%	3.0%
003	0.0%	0.2%	0.5%	0.3%	0.1%	1.0%
004	0.0%	0.2%	0.1%	0.7%	0.1%	1.0%
005	0.0%	0.2%	0.0%	0.8%	0.1%	1.0%
006	0.0%	0.2%	0.3%	0.5%	0.1%	1.0%
007	0.0%	0.1%	0.1%	0.8%	0.1%	1.0%
008	0.0%	10.0%	35.0%	2.5%	2.5%	50.0%
009	0.0%	0.4%	0.7%	0.8%	0.1%	2.0%
010	0.0%	0.2%	0.3%	0.5%	0.1%	1.0%
011	0.0%	0.2%	0.2%	0.6%	0.1%	1.0%
012	0.0%	0.2%	0.1%	0.7%	0.1%	1.0%
013	0.0%	0.1%	0.1%	0.8%	0.1%	1.0%
014	0.0%	0.2%	0.1%	0.7%	0.1%	1.0%
015	0.0%	0.1%	0.1%	0.8%	0.1%	1.0%
016	0.0%	0.1%	0.1%	0.8%	0.1%	1.0%
017	0.0%	0.1%	0.1%	0.8%	0.1%	1.0%
018	0.0%	0.1%	0.1%	0.8%	0.1%	1.0%
<b>Cherwell (Total)</b>	<b>0.7%</b>	<b>2.3%</b>	<b>3.4%</b>	<b>0.6%</b>	<b>0.6%</b>	<b>12.0%</b>
017	0.0%	0.5%	0.8%	0.6%	0.1%	2.0%
018	0.5%	0.8%	0.8%	0.9%	0.2%	3.0%
019	0.0%	0.5%	0.6%	0.8%	0.1%	2.0%
Rest of Cherwell	0.3%	0.5%	1.3%	2.8%	0.3%	5.0%
South Oxfordshire	0.0%	0.0%	0.2%	1.7%	2.0%	2.0%
Vale of White Horse	0.0%	0.1%	0.2%	1.6%	0.1%	2.0%
West Oxfordshire	0.1%	0.2%	0.3%	1.3%	0.1%	2.0%
Out of Oxfordshire	0.0%	0.1%	1.0%	3.6%	0.4%	5.0%
<b>Total Off-Site Trips</b>	<b>2.9%</b>	<b>16.7%</b>	<b>43.9%</b>	<b>26.4%</b>	<b>5.0%</b>	<b>95.0%</b>



SCHOOL STAFF DESTINATION & MODE SHARE

	Census Oxford 001 Destination Distribution	PR6 Assumed Destination Distribution		Walk	Cycle	Pub Trans	Car Driver	Passenger	Total	Summary
Internal Site Trips										
<b>Total Oxford</b>	<b>33.1%</b>	<b>30.0%</b>								
			Assessment							
Oxford 001 Wolvercote & Cutteslowe	6.6%	6.9%	Census Oxford 001 Mode Share	32%	24.7%	6.5%	33.8%	2.6%	100.0%	
			PR6 Assumed Mode Share	51.2%	24.7%	6.5%	15.0%	2.6%	100.0%	
			Assessment							
Oxford 002 Sunnymead and Summertown	2.0%	1.8%	Census Oxford 001 Mode Share	24.4%	27.7%	10.9%	35.3%	1.7%	100.0%	
			PR6 Assumed Mode Share	30.0%	35.0%	11.0%	22.0%	2.0%	100.0%	
			Assessment							
Oxford 003 North Oxford	1.0%	0.8%	Census Oxford 001 Mode Share	10.8%	30.4%	22.5%	34.3%	2.0%	100.0%	
			PR6 Assumed Mode Share	10.8%	30.4%	22.5%	34.3%	2.0%	100.0%	
			Assessment							
Oxford 004 Marston and New Marston	1.5%	1.4%	Census Oxford 001 Mode Share	0.0%	10.0%	10.0%	80.0%	0.0%	100.0%	
			PR6 Assumed Mode Share	0.0%	10.0%	10.0%	80.0%	0.0%	100.0%	
			Assessment							
Oxford 005 Barton	1.2%	1.2%	Census Oxford 001 Mode Share	0.0%	10.0%	0.0%	90.0%	0.0%	100.0%	
			PR6 Assumed Mode Share	0.0%	10.0%	0.0%	90.0%	0.0%	100.0%	
			Assessment							
Oxford 006 Headington	2.0%	1.8%	Census Oxford 001 Mode Share	6.3%	21.3%	16.5%	52.8%	3.1%	100.0%	
			PR6 Assumed Mode Share	6.3%	21.3%	16.5%	52.8%	3.1%	100.0%	
			Assessment							
Oxford 007 Risinghurst and Sandhills	1.3%	1.2%	Census Oxford 001 Mode Share	0.0%	12.5%	6.3%	68.8%	12.5%	100.0%	
			PR6 Assumed Mode Share	0.0%	12.5%	6.3%	68.8%	12.5%	100.0%	
			Assessment							
Oxford 008 City Centre	0.7%	0.7%	Census Oxford 001 Mode Share	5.1%	40.1%	38.0%	14.9%	1.8%	100.0%	
			PR6 Assumed Mode Share	5.1%	40.1%	38.0%	14.9%	1.8%	100.0%	
			Assessment							
Oxford 009 Osney, Jericho and Binsey	1.1%	0.9%	Census Oxford 001 Mode Share	8.3%	36.4%	30.6%	22.3%	2.5%	100.0%	
			PR6 Assumed Mode Share	8.3%	36.4%	30.6%	22.3%	2.5%	100.0%	
			Assessment							
Oxford 010 Between A4142 and A429	0.7%	0.6%	Census Oxford 001 Mode Share	1.16%	26.74%	17.4%	48.8%	5.8%	100.0%	
			PR6 Assumed Mode Share	1.2%	26.7%	17.4%	48.8%	5.8%	100.0%	
			Assessment							
Oxford 011 East Oxford between A4158 Iffley Road and A420	2.6%	2.1%	Census Oxford 001 Mode Share	5.45%	25.45%	21.8%	43.6%	3.6%	100.0%	
			PR6 Assumed Mode Share	5.5%	25.5%	21.8%	43.6%	3.6%	100.0%	
			Assessment							
Oxford 012 A4144 Abingdon Road	0.7%	0.6%	Census Oxford 001 Mode Share	0.00%	60.00%	0.0%	40.0%	0.0%	100.0%	
			PR6 Assumed Mode Share	0.0%	60.0%	0.0%	40.0%	0.0%	100.0%	
			Assessment							
Oxford 013 Between Cowley Road and The Slade	3.0%	2.5%	Census Oxford 001 Mode Share	0.00%	15.58%	11.7%	66.2%	6.5%	100.0%	
			PR6 Assumed Mode Share	0.0%	15.6%	11.7%	66.2%	6.5%	100.0%	
			Assessment							
Oxford 014 Around Iffley Road from Thames to Cowley Road	1.3%	1.1%	Census Oxford 001 Mode Share	0.00%	0.00%	0.0%	80.0%	20.0%	100.0%	
			PR6 Assumed Mode Share	0.0%	0.0%	0.0%	80.0%	20.0%	100.0%	
			Assessment							
Oxford 015 Cowley and Iffley	3.1%	2.7%	Census Oxford 001 Mode Share	3.64%	12.73%	16.4%	61.8%	5.5%	100.0%	
			PR6 Assumed Mode Share	3.6%	12.7%	16.4%	61.8%	5.5%	100.0%	
			Assessment							
Oxford 016 Littlemore and Rose Hill	2.3%	2.0%	Census Oxford 001 Mode Share	0.00%	15.38%	11.5%	73.1%	0.0%	100.0%	
			PR6 Assumed Mode Share	0.0%	15.4%	11.5%	73.1%	0.0%	100.0%	
			Assessment							
Oxford 017 Blackbird Leys	1.1%	1.0%	Census Oxford 001 Mode Share	0.00%	0.00%	8.3%	83.3%	8.3%	100.0%	
			PR6 Assumed Mode Share	0.0%	0.0%	8.3%	83.3%	8.3%	100.0%	
			Assessment							
Oxford 018 Greater Leys	0.9%	0.8%	Census Oxford 001 Mode Share	10.00%	10.00%	20.0%	60.0%	0.0%	100.0%	
			PR6 Assumed Mode Share	10.0%	10.0%	20.0%	60.0%	0.0%	100.0%	
			Assessment							
<b>Total Cherwell</b>	<b>22.1%</b>	<b>26.4%</b>								
			Assessment							
Cherwell 017 Kidlington North	3.6%	2.9%	Census Oxford 001 Mode Share	0.0%	23.1%	38.5%	30.8%	7.7%	100.0%	
			PR6 Assumed Mode Share	0.0%	23.1%	38.5%	30.8%	7.7%	100.0%	
			Assessment							
Cherwell 018 Kidlington South	3.1%	2.6%	Census Oxford 001 Mode Share	0.0%	0.0%	40.0%	50.0%	10.0%	100.0%	
			PR6 Assumed Mode Share	15.0%	15.0%	30.0%	30.0%	10.0%	100.0%	
			Assessment							
Cherwell 019 (PR8) Begbroke and Yarnton	3.7%	7.8%	Census Oxford 001 Mode Share	0.0%	14.5%	26.3%	52.6%	6.6%	100.0%	
			PR6 Assumed Mode Share	13.0%	20.0%	30.0%	30.0%	7.0%	100.0%	
			Assessment							
Rest of Cherwell	11.6%	13.2%	Census Oxford 001 Mode Share	1.3%	5.3%	12.0%	77.3%	4.0%	100.0%	
			PR6 Assumed Mode Share	1.3%	5.3%	12.0%	77.3%	4.0%	100.0%	
			Assessment							
South Oxfordshire	5.1%	5.7%	Census Oxford 001 Mode Share	6.9%	2.3%	8.0%	74.7%	8.0%	100.0%	
			PR6 Assumed Mode Share	6.9%	2.3%	8.0%	74.7%	8.0%	100.0%	
			Assessment							
Vale of White Horse	10.5%	11.5%	Census Oxford 001 Mode Share	0.8%	4.8%	13.6%	78.4%	2.4%	100.0%	
			PR6 Assumed Mode Share	0.8%	4.8%	13.6%	78.4%	2.4%	100.0%	
			Assessment							
West Oxfordshire	13.4%	13.9%	Census Oxford 001 Mode Share	0.0%	3.4%	4.5%	92.0%	0.0%	100.0%	
			PR6 Assumed Mode Share	0.0%	3.4%	4.5%	92.0%	0.0%	100.0%	
			Assessment							
Out of Oxfordshire	15.9%	12.5%	Census Oxford 001 Mode Share	3.3%	2.2%	33.5%	59.8%	1.1%	100.0%	
			PR6 Assumed Mode Share	3.3%	2.2%	33.5%	59.8%	1.1%	100.0%	
			Assessment							
<b>Total</b>	<b>100.0%</b>	<b>100.0%</b>								

School Staff Trip Distribution by Mode Share

	Walk	Cycle	Pub Trans	Car Driver	Passenger	Total
Internal Site Trips						
<b>Oxford (Total)</b>	<b>4.7%</b>	<b>6.1%</b>	<b>3.7%</b>	<b>14.4%</b>	<b>1.2%</b>	<b>30.0%</b>
001	3.5%	1.7%	0.4%	1.0%	0.2%	6.9%
002	0.5%	0.6%	0.2%	0.4%	0.0%	1.8%
003	0.1%	0.2%	0.2%	0.3%	0.0%	0.8%
004	0.0%	0.1%	0.1%	1.1%	0.0%	1.4%
005	0.0%	0.1%	0.0%	1.1%	0.0%	1.2%
006	0.1%	0.4%	0.3%	1.0%	0.1%	1.8%
007	0.0%	0.2%	0.1%	0.9%	0.2%	1.2%
008	0.0%	0.3%	0.3%	0.1%	0.0%	0.7%
009	0.1%	0.3%	0.3%	0.2%	0.0%	0.9%
010	0.0%	0.1%	0.1%	0.3%	0.0%	0.6%
011	0.1%	0.5%	0.5%	0.9%	0.1%	2.1%
012	0.0%	0.3%	0.0%	0.2%	0.0%	0.6%
013	0.0%	0.4%	0.3%	1.6%	0.2%	2.5%
014	0.0%	0.0%	0.0%	0.8%	0.2%	1.1%
015	0.1%	0.3%	0.4%	1.7%	0.1%	2.7%
016	0.0%	0.3%	0.2%	1.5%	0.0%	2.0%
017	0.0%	0.0%	0.1%	0.8%	0.1%	1.0%
018	0.1%	0.1%	0.2%	0.5%	0.0%	0.8%
<b>Cherwell</b>	<b>1.6%</b>	<b>3.3%</b>	<b>5.8%</b>	<b>14.2%</b>	<b>1.5%</b>	<b>26.4%</b>
017	0.0%	0.7%	1.1%	0.9%	0.2%	2.9%
018	0.4%	0.4%	0.8%	0.8%	0.3%	2.6%
019	1.0%	1.6%	2.3%	2.3%	0.5%	7.8%
Rest of Cherwell	0.2%	0.7%	1.6%	10.2%	0.5%	13.2%
<b>South Oxfordshire</b>	<b>0.4%</b>	<b>0.1%</b>	<b>0.5%</b>	<b>4.2%</b>	<b>0.5%</b>	<b>5.7%</b>
Vale of White Horse	0.1%	0.6%	1.6%	9.0%	0.3%	11.5%
<b>West Oxfordshire</b>	<b>0.0%</b>	<b>0.5%</b>	<b>0.6%</b>	<b>12.8%</b>	<b>0.0%</b>	<b>13.9%</b>
Out of Oxfordshire	0.4%	0.3%	4.2%	7.5%	0.1%	12.5%
<b>Total</b>	<b>7.2%</b>	<b>10.9%</b>	<b>16.3%</b>	<b>62.1%</b>	<b>3.6%</b>	<b>100.0%</b>

