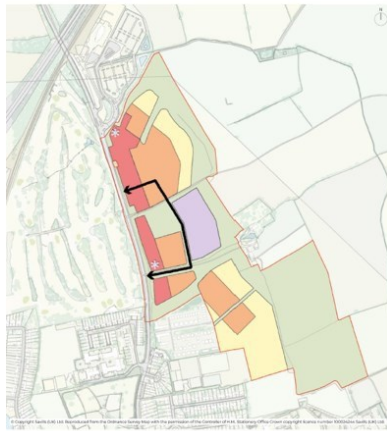
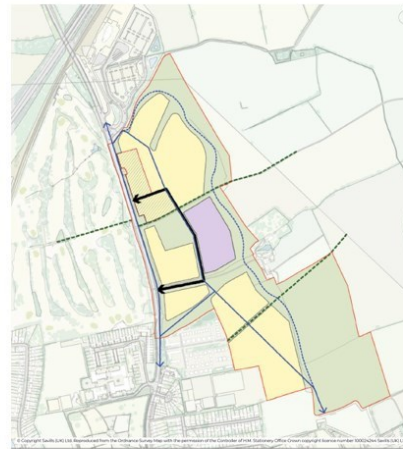


The scheme parameters



- Site Boundary
- Up to 2-2.5 storeys; 9m max ridge height from the finished ground level
- Key buildings at gateway/landmark features up to 10m max from the finished ground level
- Primary school; 18 metres max ridge height from finished ground level
- Up to 3 storeys; 12m max ridge height from the finished ground level
- Open space and planting (may be low-level buildings up to 2m from ground level related to maintenance / infrastructure)
- Up to 4 storeys; 14m max ridge height from the finished ground level

Building height parameter plan



- Site Boundary
- Residential development
- Open space and planting
- Primary school (Boundary subject to variation of + or - 20m)
- Local centre to be located in this area
- Access roads (subject to centre line deviation of +15 / -15 metres)
- Existing public right of way / bridleway
- Cycle links; Alignment subject to detail
- Pedestrian, wheelchair, and all-weather cycle route; Alignment subject to detail

Land use and access parameter plan

Masterplan updates

Character and Placemaking

Throughout our work we have been considering what it would be like to live at Water Eaton.

For the outline application we will be submitting indicative guidelines for character and appearance in the form of colour palettes and character areas based on the adopted Development Brief for the site.



Water Eaton



Green Infrastructure Strategy

Green infrastructure objectives

- A more biodiverse landscape
- A resilient landscape
- A landscape appropriate to historic and local character contexts
- A multi-functional landscape
- A landscape that encourages healthy lifestyles and wellbeing
- A landscape that stimulates the economy.



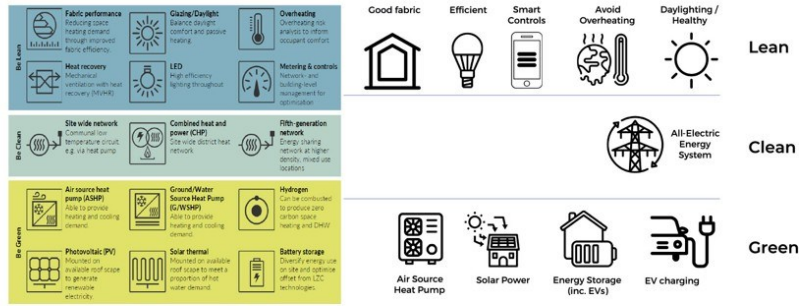
4

Sustainable development

Energy and climate change mitigation

The development of the strategy has followed the good practice of lean, clean, green. The homes will also add in a “smart” element:

Evolution of Lean, Clean and Green practices



Responsible ownership and stewardship

The Responsible Ownership Policy for Property (ROPP) guides decision making using seven principles:

- Connectivity
- Identity
- Community
- Ecology
- Energy
- Carbon
- Health and wellbeing



17

5

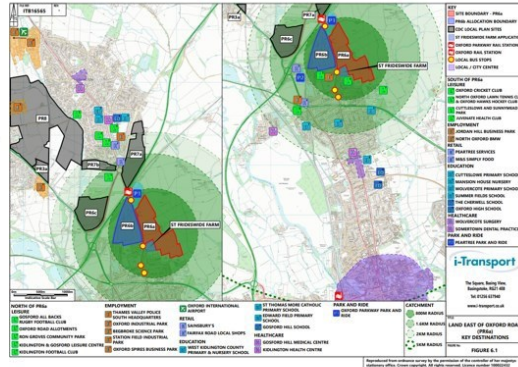
Transport

18

Transport and access strategy

Oxfordshire County Council's recently adopted Local Transport and Connectivity Plan (LTCP) outlines a vision to deliver a net-zero transport and travel system.

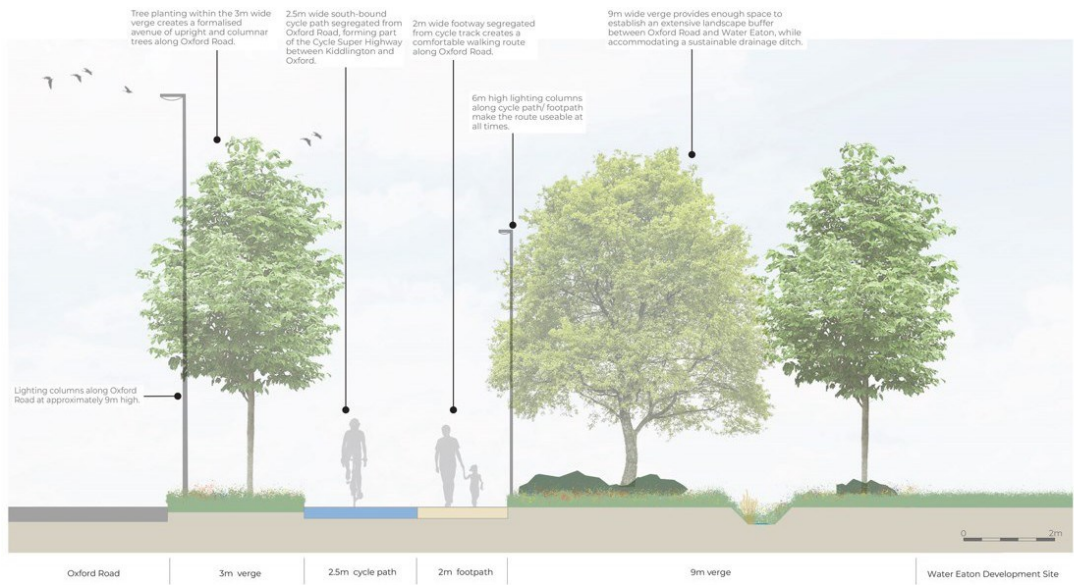
- By 2030 to replace or remove one out of every four current car trips in Oxfordshire and increase the number of cycle trips in Oxfordshire from 600,000 to one million cycle trips per week; and
- By 2040 to deliver a net-zero transport network and replace or remove an additional one out of three car trips in Oxfordshire



Transport- Access strategy

- Left in left out
- Toucan crossing
- Bus stops
- Cyclops Junction
- Agreed in principle with OCC and PR6b
- Part of OCC Cycle super-highway



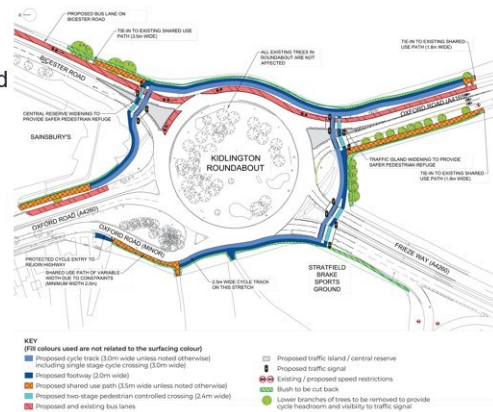


Transport- Access and Movement

Water Eaton

Sustainable transport strategy

- Cycle superhighway between Kidlington and Cutteslowe roundabout
- Parking – mix between Oxford and Oxfordshire standards
- Connectivity to PRow, internal pedestrian and cycle linkages and potential mobility hub
- Cumulative traffic modeling
- Travel plan
- Contribution towards a package of sustainable transport measures



6

Ecology and biodiversity

23

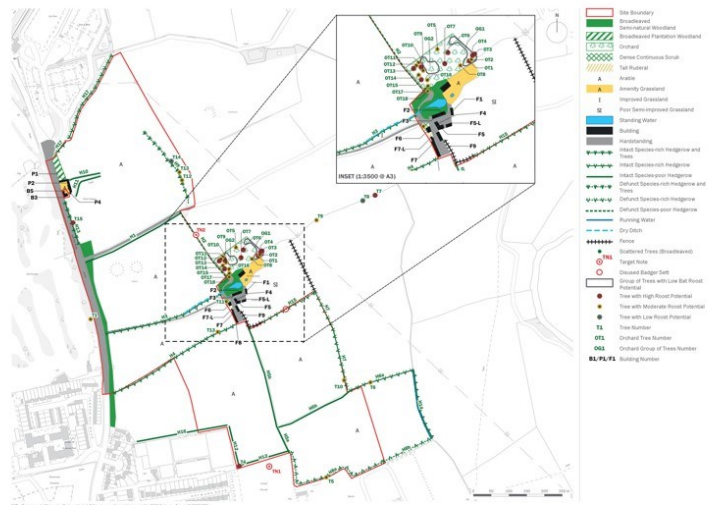
Ecology and biodiversity

Water Eaton

Ecology mitigation

We have carried out surveys across the site over a number of years to build a detailed knowledge of the ecological and biodiversity aspects.

This work has helped to develop ecology mitigation measures for the Water Eaton development.



24

Landscape and visual



Landscape and visual



Landscape and visual



Ecology and biodiversity

Water Eaton

Working with local heritage

The Water Eaton site is influenced by a number of heritage assets including St Frideswide's Farmhouse to the east, the Pipal Barns complex on Oxford Road and two Anglo-Saxon barrows within the site.



7

Ground conditions and utilities

Ground conditions and utilities



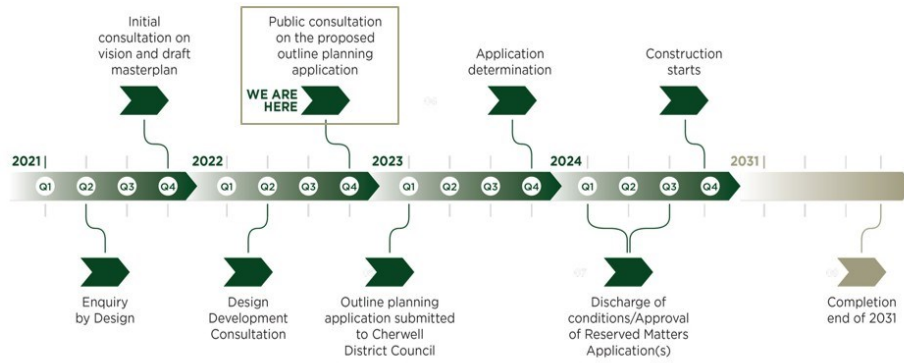
Plan showing risk of flooding from surface water



Next steps

Water Eaton

Project timeline



Q&A Session

Next steps

Water Eaton

Providing your views



Online: via our project website www.water-eaton.co.uk



Email: send an email to us at info@water-eaton.co.uk



In writing: send your written comments to us at:

**Freepost RRRG-AZTG-JLJX, Water Eaton Team (Camargue),
Eagle Tower, Montpellier Drive,
Cheltenham, GL50 1TA**

Consultation open until 20 January 2023

33

Water Eaton



Thank you for attending

Appendix 30 – Feedback Form, Winter 2022 / 23 Consultation 7 December to 20 January 2023

Public Consultation – 7 December to 20 January 2023

Feedback form

You have an important role to play in shaping our proposals for Water Eaton (PR6a).

We will consider all the feedback we receive during this consultation as we finalise our masterplan and proposals for the site. This will be the final stage of public consultation before a planning application is submitted in early 2023.

Please complete this feedback form and return to the address below by Friday 20 January 2023 (no stamp required).

Freeport RRRG-AZTG-JLJX, Camargue (PR6a)

Eagle Tower, Montpellier Drive

Cheltenham, GL50 1TA

Alternatively, you can provide your comments and views by:

- **Visiting** www.water-eaton.co.uk and filling in our online feedback form or feedback map.

- **Sending an email to:** info@water-eaton.co.uk

Your details

First Name:		Surname:	
Address:			
Telephone:			
Email:			
Organisation (if applicable):			

-
- 1. Do you have any general comments on our updated masterplan for Water Eaton?**

- 2. Please provide any comments you have on the environmental mitigation measures of the proposal.**

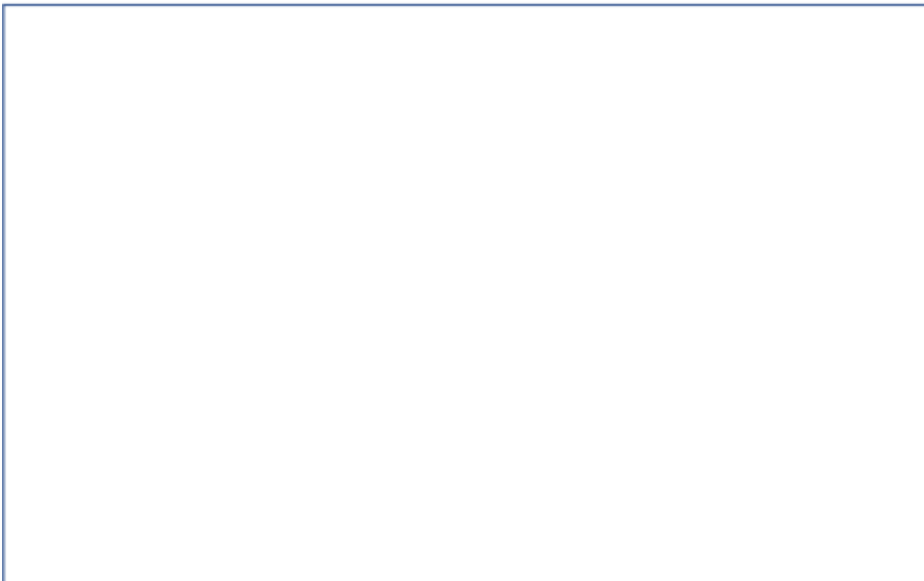
-
- 1. Do you have any general comments on our updated masterplan for Water Eaton?**

- 2. Please provide any comments you have on the environmental mitigation measures of the proposal.**

3. Please provide any comments you have on the character and landscape guidelines we are developing.



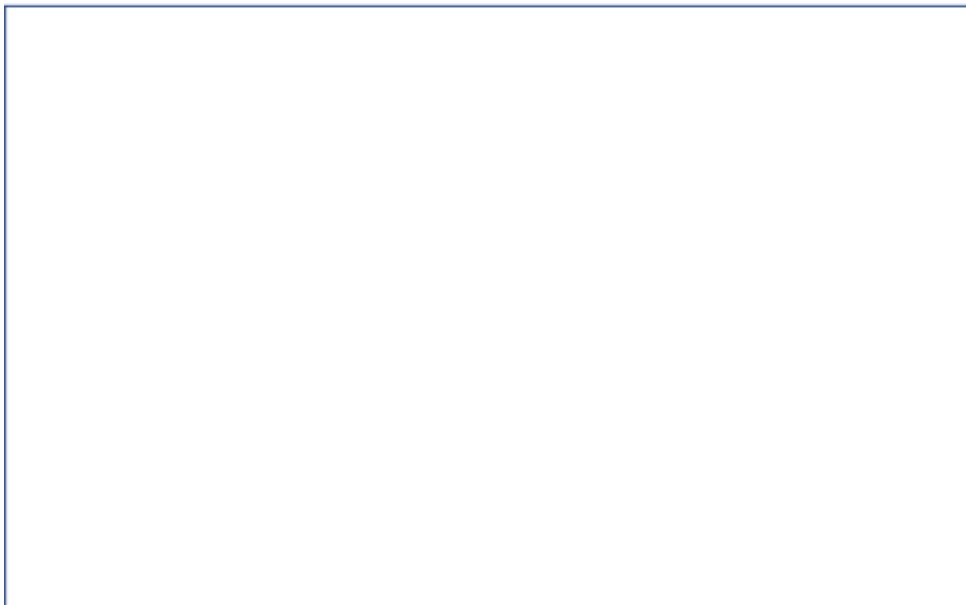
4. Please provide any comments you have on the proposed sustainability strategies.



5. Please provide any general comments you have on the transport plan.



6. Please provide any comments you have on the transport and access strategy.



7. Please provide any comments you have on sustainable transport improvements such as:

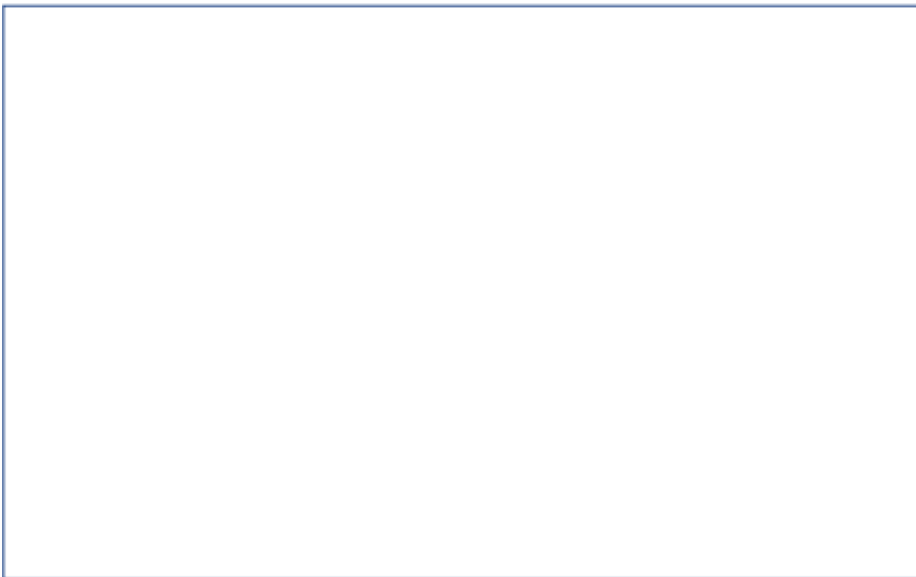
- The cycle superhighway
- Cutteslowe Park cycle route
- Mobility Hubs

8. Please provide any comments you have on proposals for surface water drainage and foul drainage at Water Eaton.

- 9. Please provide any comments you have on the plans for:**
- St Frideswide's Farmhouse
 - Pipal Barns
 - The Barrows



- 10. Please provide any comments you have on our landscape and visual plans.**



Additional comments

- 11. Please provide any further comments you may have on our proposals for Water Eaton that you feel we should be aware of.**



Thank you for your comments

Appendix 31 – Photographs from Events, Winter 2022 / 23 Consultation 7 December to 20 January 2023

