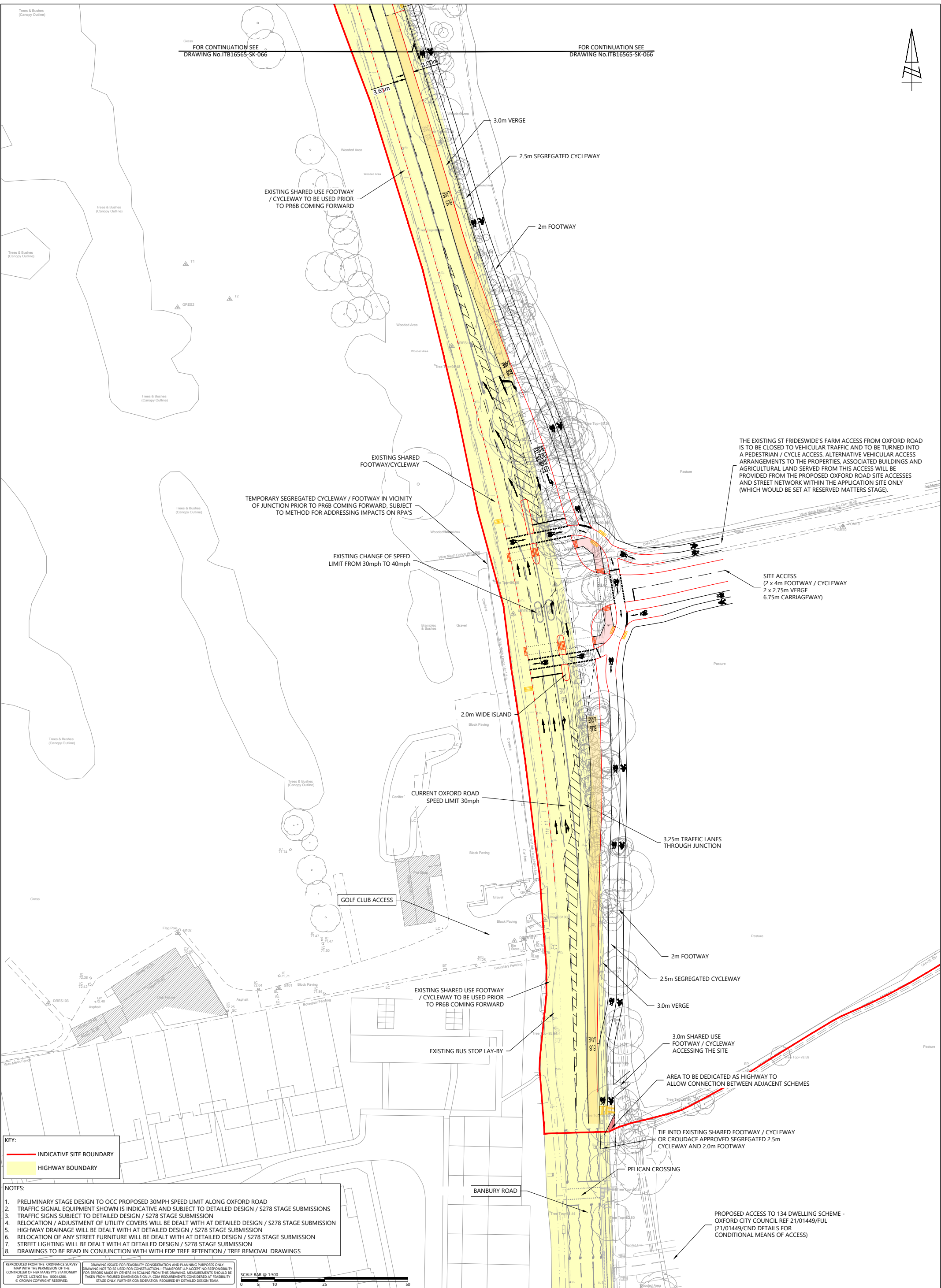
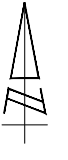


FOR CONTINUATION SEE
DRAWING No.ITB16565-SK-066

FOR CONTINUATION SEE
DRAWING No.ITB16565-SK-066



KEY:
— INDICATIVE SITE BOUNDARY
— HIGHWAY BOUNDARY

- NOTES:**
1. PRELIMINARY STAGE DESIGN TO OCC PROPOSED 30MPH SPEED LIMIT ALONG OXFORD ROAD
 2. TRAFFIC SIGNAL EQUIPMENT SHOWN IS INDICATIVE AND SUBJECT TO DETAILED DESIGN / S278 STAGE SUBMISSIONS
 3. TRAFFIC SIGNS SUBJECT TO DETAILED DESIGN / S278 STAGE SUBMISSION
 4. RELOCATION / ADJUSTMENT OF UTILITY COVERS WILL BE DEALT WITH AT DETAILED DESIGN / S278 STAGE SUBMISSION
 5. HIGHWAY DRAINAGE WILL BE DEALT WITH AT DETAILED DESIGN / S278 STAGE SUBMISSION
 6. RELOCATION OF ANY STREET FURNITURE WILL BE DEALT WITH AT DETAILED DESIGN / S278 STAGE SUBMISSION
 7. STREET LIGHTING WILL BE DEALT WITH AT DETAILED DESIGN / S278 STAGE SUBMISSION
 8. DRAWINGS TO BE READ IN CONJUNCTION WITH WITH EDP TREE RETENTION / TREE REMOVAL DRAWINGS

REPRODUCED FROM THE ORDNANCE SURVEY MAP WITH THE PERMISSION OF THE CONTROLLER OF HER MAJESTY'S STATIONERY OFFICE. LICENCE No. 100044386. © CROWN COPYRIGHT RESERVED.

DRAWING ISSUED FOR FEASIBILITY CONSIDERATION AND PLANNING PURPOSES ONLY. DRAWING NOT TO BE USED FOR CONSTRUCTION. I-TRANSPORT LLP ACCEPTS NO RESPONSIBILITY FOR ERRORS MADE BY OTHERS IN SCALING FROM THIS DRAWING. MEASUREMENTS SHOULD BE TAKEN FROM FIGURED DIMENSIONS ONLY. CDM REQUIREMENTS CONSIDERED AT FEASIBILITY STAGE ONLY. FURTHER CONSIDERATION REQUIRED BY DETAILED DESIGN TEAM.



i-transport
The Square, Basingstoke, Hampshire, RG21 4EB
Tel 01256 637940
www.i-transport.co.uk

REV	DATE	BY	DESCRIPTION	CHK	APP	PROJECT
1	14.10.21	PH	HEAVYWORK ALIGNMENT UPDATED	JDM	MC	FOR INFORMATION
2	17.05.22	SH	INTERNAL ADJUST	JDM	MC	
3	17.05.22	SH	HEAVYWORK ALIGNMENT UPDATED	JDM	MC	
4	07.08.23	SH	HEAVYWORK ALIGNMENT UPDATED	JDM	MC	
5	07.08.23	SH	NOTES UPDATED	JDM	MC	
6	07.08.23	SH	HEAVYWORK ALIGNMENT UPDATED	JDM	MC	
7	07.08.23	SH	NOTES UPDATED	JDM	MC	
8	07.08.23	SH	HEAVYWORK ALIGNMENT UPDATED	JDM	MC	

PROPOSED PR6A ACCESS STRATEGY AND CYCLE SUPER HIGHWAY - INCLUDING LEFT IN LEFT OUT PRIORITY AND PARTIAL CYCLOPS SIGNAL JUNCTION (SOUTHERN EXTENT)

WATER EATON (PR6A)

BELLWAY HOMES

DRAWN	CHECKED	APPROVED
PH	JDW	JDW
PROJECT No:	SCALE @ A1:	DATE:
ITB16565	1:500	13.01.23
DRAWING No:	ITB16565 - SK - 067	
		REV: H

THE EXISTING ST FRIDESWIDE'S FARM ACCESS FROM OXFORD ROAD IS TO BE CLOSED TO VEHICULAR TRAFFIC AND TO BE TURNED INTO A PEDESTRIAN / CYCLE ACCESS. ALTERNATIVE VEHICULAR ACCESS ARRANGEMENTS TO THE PROPERTIES, ASSOCIATED BUILDINGS AND AGRICULTURAL LAND SERVED FROM THIS ACCESS WILL BE PROVIDED FROM THE PROPOSED OXFORD ROAD SITE ACCESSES AND STREET NETWORK WITHIN THE APPLICATION SITE ONLY (WHICH WOULD BE SET AT RESERVED MATTERS STAGE).

SITE ACCESS
(2 x 4m FOOTWAY / CYCLEWAY
2 x 2.75m VERGE
6.75m CARRIAGEWAY)

2.5m SEGREGATED CYCLEWAY

3.0m VERGE

3.0m SHARED USE FOOTWAY / CYCLEWAY ACCESSING THE SITE

AREA TO BE DEDICATED AS HIGHWAY TO ALLOW CONNECTION BETWEEN ADJACENT SCHEMES

TIE INTO EXISTING SHARED FOOTWAY / CYCLEWAY OR CROUDACE APPROVED SEGREGATED 2.5m CYCLEWAY AND 2.0m FOOTWAY

PELICAN CROSSING

PROPOSED ACCESS TO 134 DWELLING SCHEME - OXFORD CITY COUNCIL REF 21/01449/FUL (21/01449/CND DETAILS FOR CONDITIONAL MEANS OF ACCESS)

2.0m WIDE ISLAND

CURRENT OXFORD ROAD SPEED LIMIT 30mph

GOLF CLUB ACCESS

EXISTING SHARED USE FOOTWAY / CYCLEWAY TO BE USED PRIOR TO PR6B COMING FORWARD

EXISTING BUS STOP LAY-BY

BANBURY ROAD

EXISTING CHANGE OF SPEED LIMIT FROM 30mph TO 40mph

EXISTING SHARED FOOTWAY/CYCLEWAY

TEMPORARY SEGREGATED CYCLEWAY / FOOTWAY IN VICINITY OF JUNCTION PRIOR TO PR6B COMING FORWARD, SUBJECT TO METHOD FOR ADDRESSING IMPACTS ON RPA'S

EXISTING SHARED USE FOOTWAY / CYCLEWAY TO BE USED PRIOR TO PR6B COMING FORWARD

2.5m SEGREGATED CYCLEWAY

3.0m VERGE

2m FOOTWAY

3.65m

8.00m