

NOTES

Reproduced from the Ordnance Survey map with the permission of the Controller of Her Majesty's Stationery Office, © Crown Copyright.

C A Cornish & Associates Ltd Licence no LIG0908.

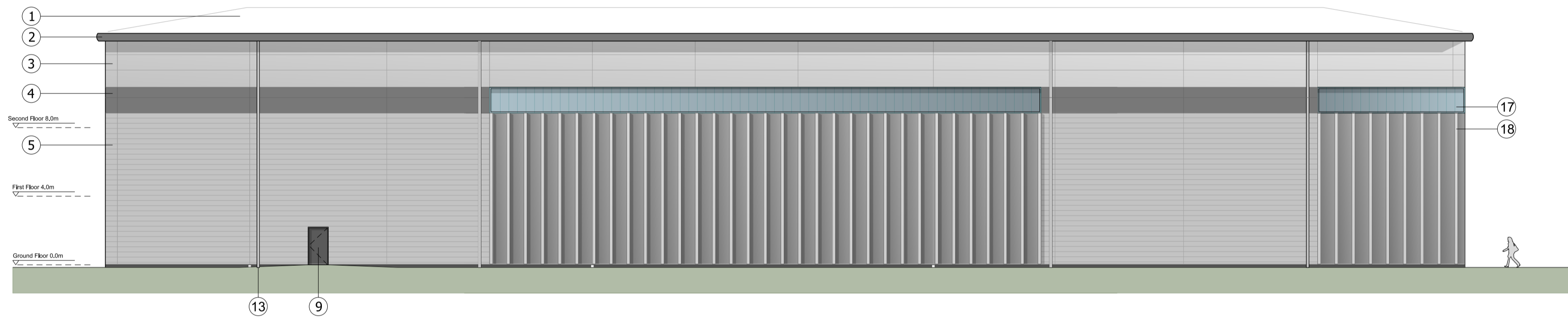
Subject to Statutory Approvals.

KEY

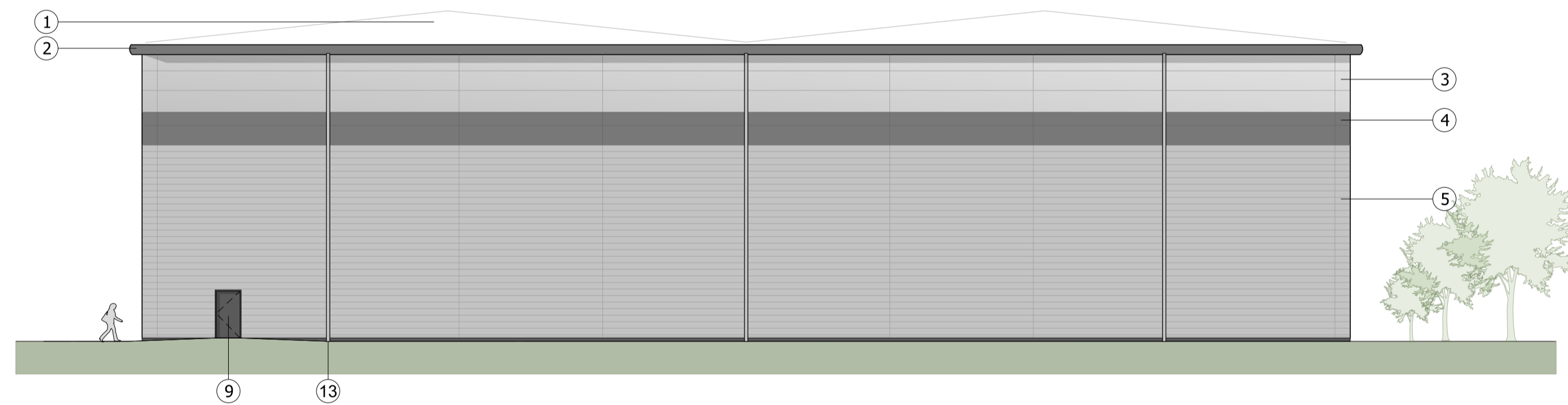
- ① Built-up roof system
Colour :Goosewing Grey
- ② Eaves and verge flashings. Colour: Zeus
- ③ Micro-lined rock fibre composite panel system
Colorcoat Prisma - Sirius
- ④ Feature-band Micro-lined rock fibre composite panel system. Colorcoat Prisma - Zeus
- ⑤ Horizontal Trapezoidal built-up cladding system - Corus Colorcoat Prisma - Sirius
- ⑥ PPC Aluminium double glazed curtain walling, colour: Anthracite RAL 7016
- ⑦ PPC Aluminium double glazed windows with Brise Soleil. Colour: Anthracite RAL 7016
- ⑧ Loading door, colour: Anthracite RAL 7016
- ⑨ Steel fire escape door, colour: Anthracite RAL 7016
- ⑩ Dock leveller door and shelter, colour RAL 7016
- ⑪ Glass canopy supported off RAL 7016 steelwork frame
- ⑫ Proposed signage zone
- ⑬ Rainwater pipe, colour: Silver - RAL 9006
- ⑭ Brise Soleil. Colour: Anthracite RAL 7016
- ⑮ Louvres - colour to match cladding (to M&E consultant specification)
- ⑯ Micro-lined rock fibre composite panel system. Colorcoat Prisma - Zeus
- ⑰ Translucent cladding panel
- ⑱ PPC Rainscreen feature cladding system (Colour Zeus) with projecting fins (Colour: Sirius)
- Look-a-like panels - obscured glass



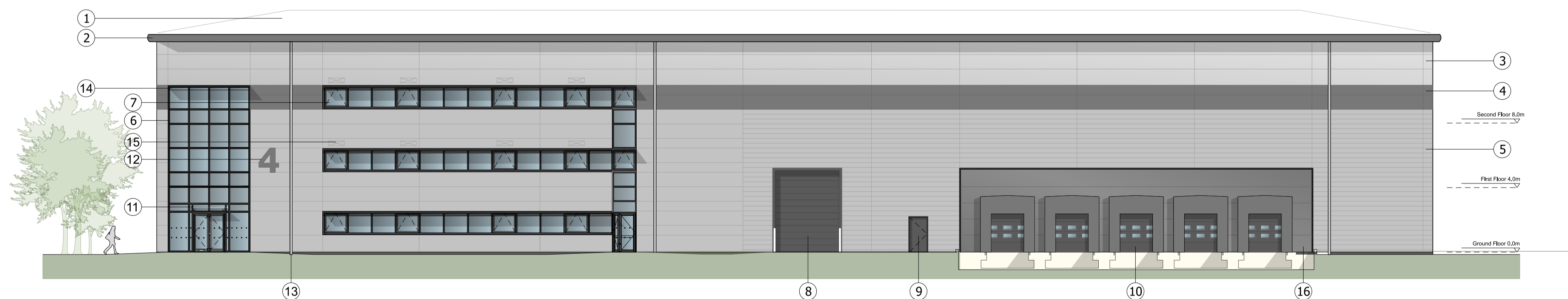
NORTH WEST ELEVATION



NORTH EAST ELEVATION



SOUTH EAST ELEVATION



SOUTH WEST ELEVATION

| | | | |
|-----|--|-----|------------|
| E | Level loading and dock doors revised. Personnel door added to south west elevation. | SM | 30/03/2023 |
| D | Additional rainscreen added to north west elevation | CS | 04/03/2022 |
| C | Cladding description updated | CS | 02/09/2021 |
| B | Corner rainscreen feature cladding and translucent cladding panel added. Key updated. Minor adjustments. | SK | 20/08/2021 |
| A | Cladding and curtain walling adjusted. Labels and key added. | SK | 29/07/2021 |
| Rev | Description | Chk | Date |

27 Greville Street
London EC1N 8SU

tel +44(0)20 7400 2120

enquiries@cornisharchitects.com
www.cornisharchitects.com

RIBA Chartered Practice

cornisharchitects

Project Title:
PHASE 3 AXIS J9 BICESTER

Drawing Title:
UNIT 4 ELEVATIONS

Drawing Status:
TOWN PLANNING

Scale:
0 2 metres 16

Drawn By: S K Scale: 1:200 @ A1 Date: 16/07/2021 Chk'd By: C S

ALBION LAND

Drawing No. 20019 - TP - 012 Rev. E

Copyright of Cornish Architects ©