

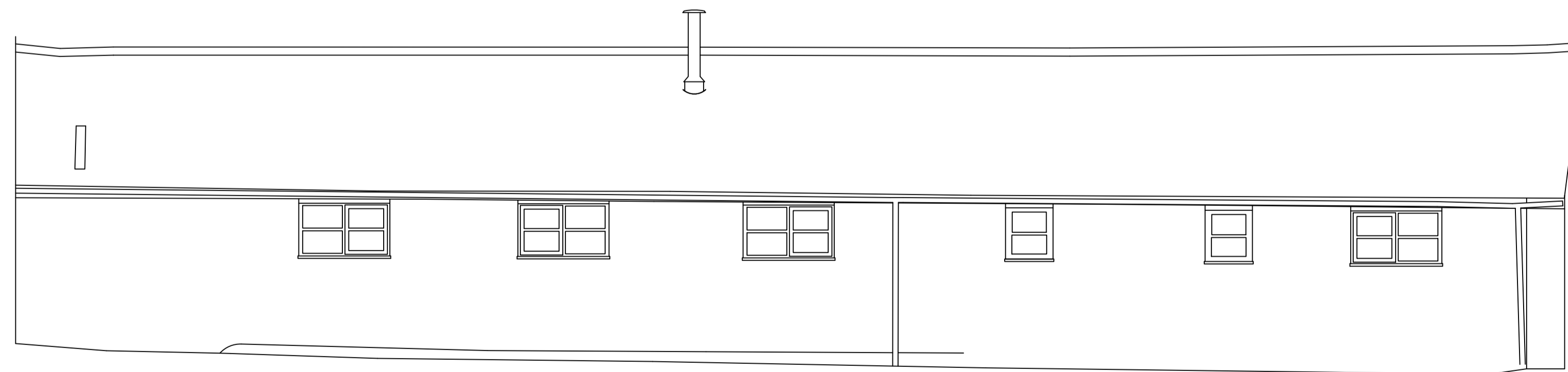
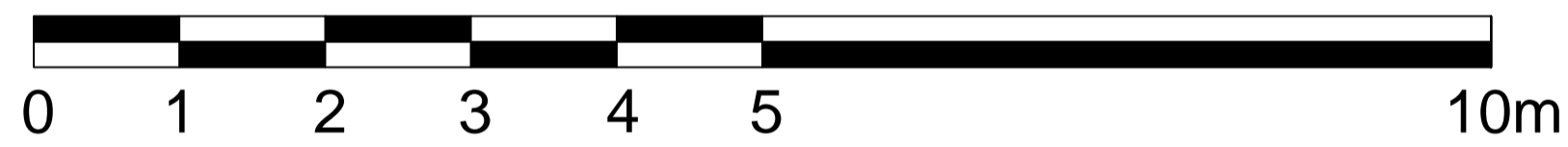
Single Storey Wing East Elevation



▼ O.S. Datum 165.00m

Single Storey Wing West Elevation

Scale Bar



▼ O.S. Datum 165.00m

ABBREVIATIONS:

- BL - Beam Underside Level
- CL - Ceiling Level
- FA - Floor to Arch Height (Highest Point)
- FAC - Floor to Air Conditioning Unit Height
- FB - Floor to Beam Height
- FC - Floor to Structural Ceiling Height
- FD - Floor to Duct Height
- FL - Floor Level
- FH - Floor to Head Height
- FS - Floor to Sill Height
- FSC - Floor to Suspended Ceiling Height
- RFL - Raised Floor Level
- SCL - Suspended Ceiling Level
- SH - Sill to Head Height

NOTES:

- 1) Levels related to OS Datum established by GPS

REVISIONS:

Rev	Date	Description	Dwn
0	16.12.20	Original Drawing	NCM

DB Surveys

16 Newlands, Letchworth Garden City
 SG6 2JE, Herts. Tel: 01908 584 806
 E: info@dbsurveys.co.uk W: www.dbsurveys.co.uk

New Barn Farm
Sibford Gower
Oxfordshire OX15 5RY
Main House Elevations

Dwg. No: 20-097-EL-Main Sheet. No: 02
 Scale: 1:50@A1 Date: 16.12.20