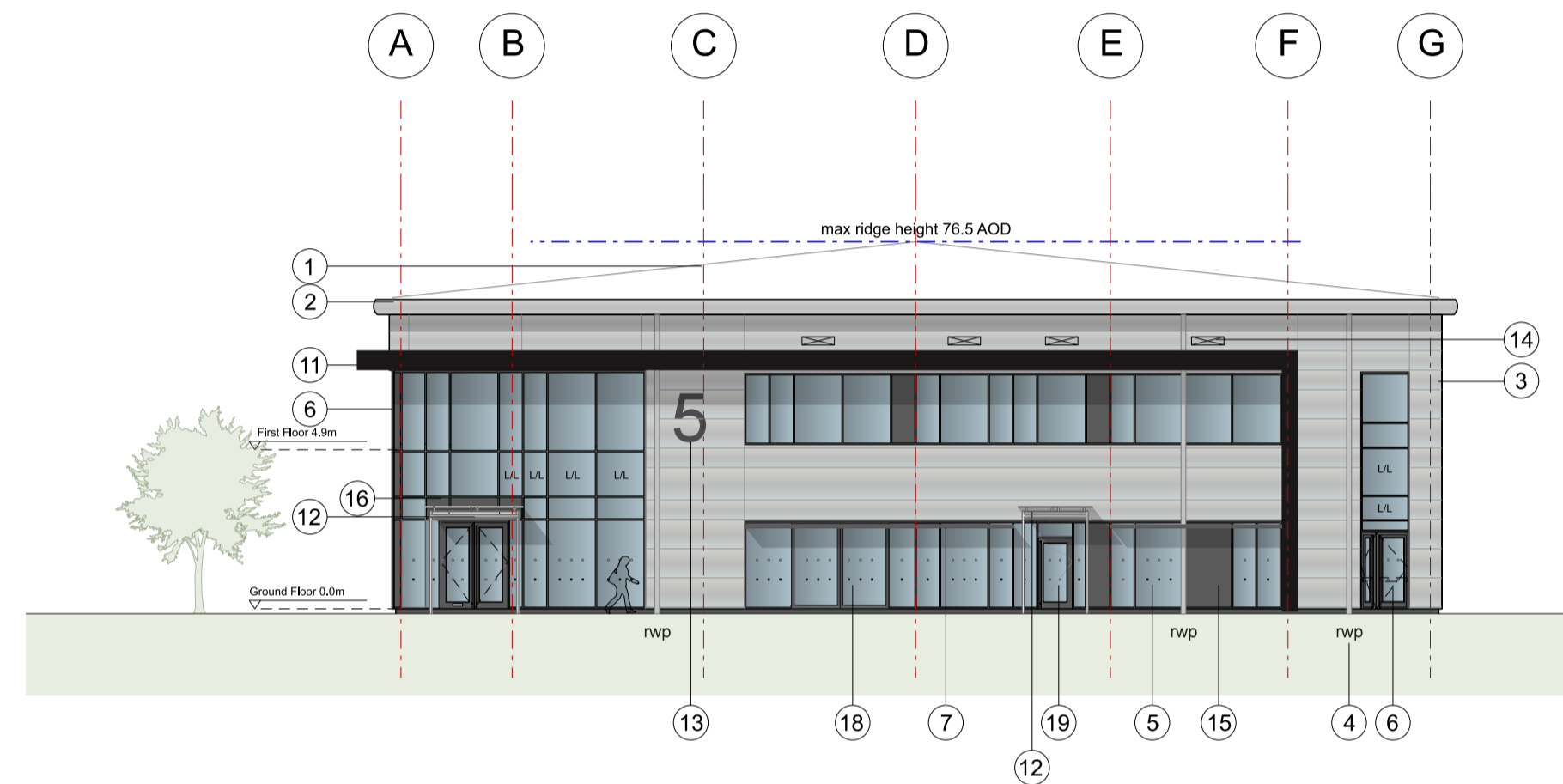
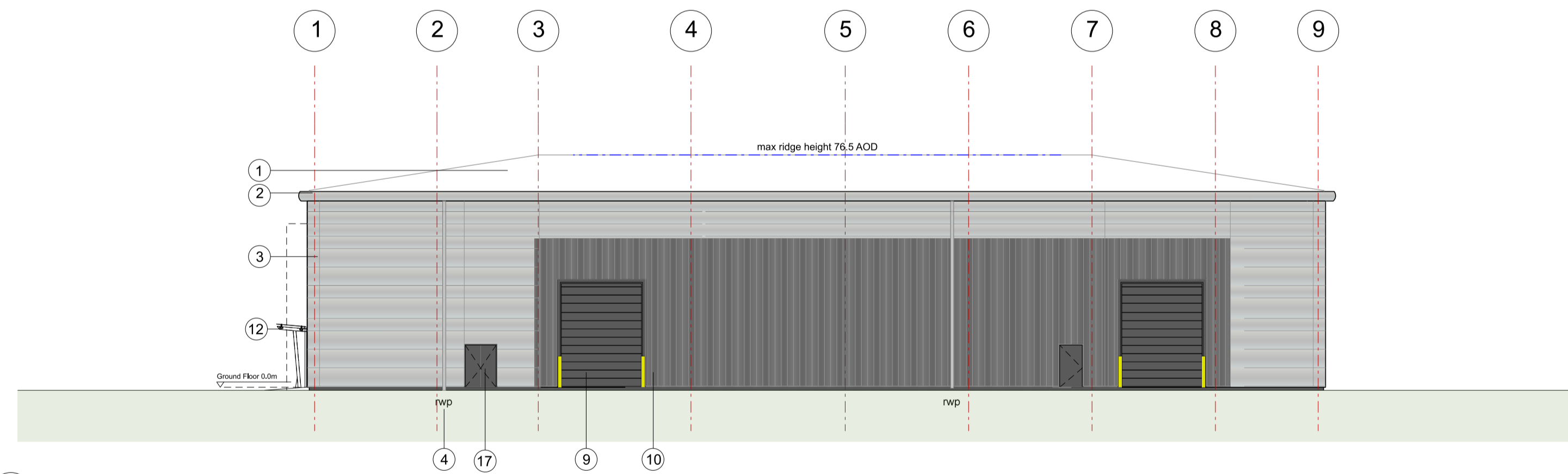


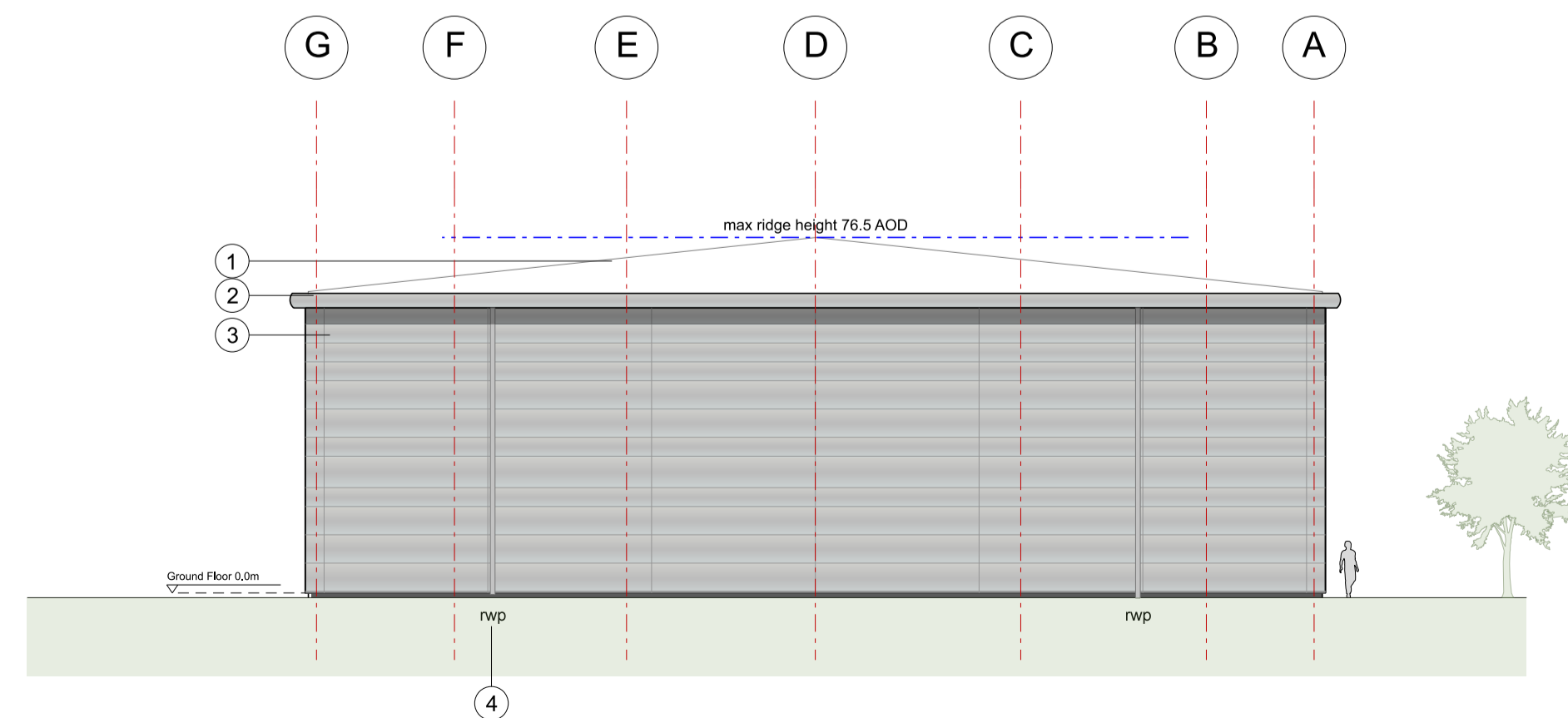
1
004 Unit 5
North West Elevation



2
004 Unit 5
South West Elevation



3
004 Unit 5
South East Elevation



4
004 Unit 5
North East Elevation

| KEY | |
|-----------------------------------------|------------------------------------------------------------------------------------------------|
| 1 | Built-up metal roof system Colour: HPS200 Ultra Goosewing Grey RAL 7038 |
| 2 | Eaves and verge flashings. Colour: Sirius |
| 3 | Horizontal Microrib composite panel system Colorcoat Prisma - Sirius RAL 9006 |
| 4 | Rainwater pipes. Colour: Sirius RAL 9006 |
| 5 | PPC Aluminium double glazed windows. Colour: Anthracite RAL 7016 |
| 6 | PPC Aluminium double glazed curtain walling and door frames. Colour: Anthracite RAL 7016 |
| 7 | Brise Soleil, colour to match window frame |
| 8 | Steel fire escape doors. Colour: Anthracite RAL 7016 |
| 9 | Loading doors. Colour: Anthracite RAL 7016 |
| 10 | Vertical Trapezoidal built-up cladding system - Corus Colorcoat Prisma - Zeus |
| 11 | Feature canopy, colour: Black |
| 12 | Freestanding glass canopy, colour: Anthracite |
| 13 | Unit number |
| 14 | Louvers - colour to match cladding (to M&E consultant specification) |
| 15 | Decorative coloured glass feature insulated cassettes |
| 16 | Aluminium panel, colour: Anthracite |
| 17 | Double steel door, colour: Anthracite |
| 18 | Glazed sliding double doors |
| 19 | Single glazed door |
| L/L Look-a-like panels - obscured glass | |

| Rev | Description | Chk | Date |
|-----|-----------------------------------------------------------------------------------------------------------------------------------------------------------------------------------------------------------------------------------------------------------|-----|------------|
| A | Glazed doors added to SW elevation incl canopy. Double steel doors added to SE elevation, Level loading door arrangement adjusted. Pattern of cassettes, glazing and look-a-likes updated. Curtain walling 1st floor opening window update to fixed pane. | CB | 13/04/2023 |

27 Greville Street
London EC1N 8SU
tel +44(0)20 7400 2120
enquiries@cornisharchitects.com
www.cornisharchitects.com



Project Title:
CATALYST BICESTER RM4

Drawing Title:
UNIT 5 ELEVATIONS

Drawing Status:
TOWN PLANNING

Scale:
0 2 metres 16

| | | | |
|-----------|------------|------------|-----------|
| Drawn By: | Scale: | Date: | Chk'd By: |
| S K | 1:200 @ A1 | 12/05/2022 | C S |

ALBION LAND

Drawing No. **22011 - TP - 004** Rev. **A**