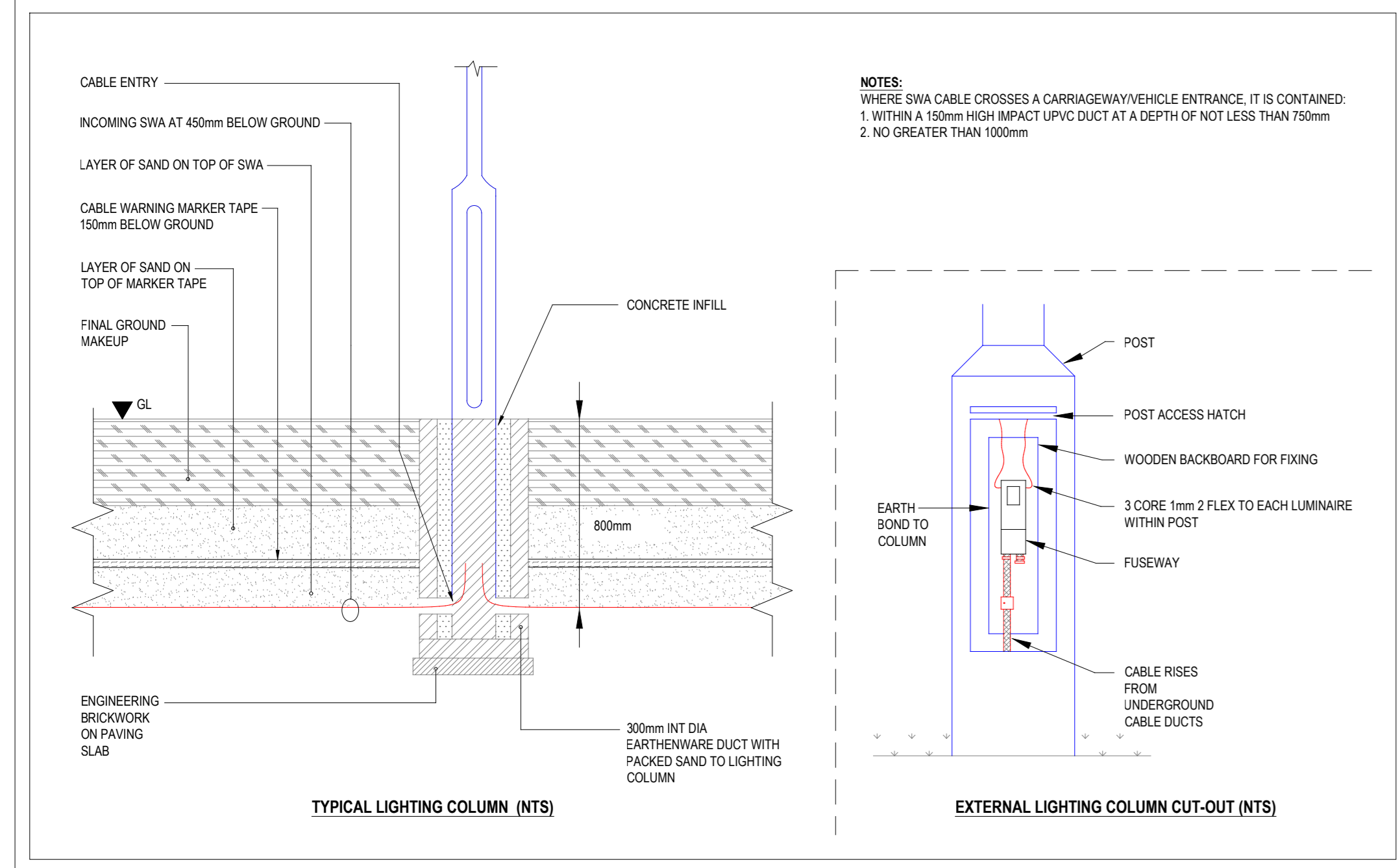


Symbol	Label	Quantity	Category Number	Description	Lumens Per Lamp	Wattage
A1	2	DSK1.2LA224 FW on 8m Column	D-Series 1 Luminaire	24252	208	
AW	14	DSK1.2LA224 FW on Wall Bracket at 8m AFFL	D-Series 1 Luminaire	24252	208	
B1	4	DSK1.2LA164 FW on 8m Column	D-Series 1 Luminaire	17044	131	
BW	6	DSK1.2LA164 FW on Wall Bracket at 8m AFFL	D-Series 1 Luminaire	17044	131	
C1	14	DSK1.2LA164 AY on 8m Column	D-Series 1 Luminaire	16556	131	
C1BL	14	DSK1.2LA164 AY BLS on 8m Column	D-Series 1 Luminaire with Back Light Shield	13416	131	
E	26	DWL 1 LAD14 HXW007 at 2.7m AFFL	Denver D Wall	897	6.5	
XA	6	EXISTING DSK1.2LA164 FW on 8m Column	D-Series 1 Luminaire	17044	131	

Description	Symbol	Aug	Min	Max
Access Road	+	25 km	7 km	0.28
Spill	+	1 km	0 km	0.90
Unit 5 Parking	+	20 km	9 km	0.41
Unit 5 Pathway	+	10 km	2 km	0.20
Unit 6	+	14 km	7 km	0.50
Unit 7 Car Park	+	22 km	14 km	0.64
Unit 7 Parking	+	23 km	10 km	0.43
Unit 7 Pathway	+	11 km	5 km	0.45
Unit 8 Parking	+	23 km	14 km	0.61
Unit 8 Pathway	+	23 km	11 km	0.48
Unit 9 Pathway	+	11 km	5 km	0.45
Unit 9 Parking	+	20 km	14 km	0.61
Unit 9 Pathway	+	20 km	10 km	0.48
Unit 9B Parking	+	21 km	10 km	0.48
Unit 10 Parking	+	20 km	10 km	0.50
Unit 10 Pathway	+	20 km	10 km	0.48
Unit 10B Parking	+	20 km	10 km	0.48
Unit 10B Pathway	+	20 km	10 km	0.48
Unit 10C11 Parking	+	20 km	10 km	0.48
Unit 10C11 Pathway	+	20 km	10 km	0.48
Unit 10C12 Parking	+	20 km	10 km	0.48
Unit 10C12 Pathway	+	20 km	10 km	0.48
Unit 10C13 Parking	+	20 km	10 km	0.48
Unit 10C13 Pathway	+	20 km	10 km	0.48
Unit 11 Parking	+	20 km	10 km	0.48
Unit 11 Pathway	+	11 km	5 km	0.45



© Engineering Services Consultancy Limited
This drawing is copyright and must not be reproduced in part or whole without permission in writing.
Contractors must verify all dimensions on site before commencing work.
All work shall be coordinated with all other trades.
RESIDENTIAL RISK REGISTER
ISO 9001
REGISTERED FIRM

NO.	DESCRIPTION OF HAZARD	CONTROL MEASURES	ACTION BY
1	UNDEVELOPED SERVICES AND SERVICES IDENTIFIED IN PREVIOUS LOCATIONS	IDENTIFICATION OF EXISTING UNDERGROUND SERVICES DRAWINGS AND CAT (JOINING OF SERVICES)	CONTRACTOR
		CAREFUL EXCAVATION USING SLOT TRENCHES AND CAT LOCATIONS OF SERVICES	

- NOTES**
- THIS DRAWING SHALL BE READ IN CONJUNCTION WITH ALL OTHER ENGINEERING SERVICES CONSULTANCY LIMITED DRAWINGS
 - THE EXTERNAL LIGHTING SHALL BE DESIGNED TO ENSURE THAT REQUIRED LIGHTING LEVELS ARE ACHIEVED WHILST MINIMISING GLARE AND LIGHT SPILLAGE TO THE SURROUNDING AREAS AND TO ENSURE THERE IS NO DIRECT CONTRIBUTION TO UPWARD LIGHT POLLUTION
 - THE EXTERNAL LIGHTING SCHEME SHALL BE PROVIDED IN ACCORDANCE WITH THE LOCAL PLANNING AUTHORITIES REQUIREMENTS/RESTRICTIONS.
 - WHERE COLUMNS ARE POSITIONED NEAR TO NEIGHBOURING PROPERTIES, OR LOCATED ON THE PERIMETER OF THE SITE, THEY SHALL BE COMPLETE WITH SUITABLE BACK-SHIELDS TO PREVENT LIGHT SPILL.
 - ALL COLUMNS SHALL HAVE A FLEXIBLE DUCT PASSING INTO THE BASE, THROUGH THE CONCRETE, TO ENSURE THAT FUTURE REWIRING OF THE CIRCUITS IS POSSIBLE.
 - WHERE LUMINAIRES ARE FIXED DIRECTLY TO THE EXTERNAL BUILDING FABRIC, THE LUMINAIRES SHALL BE THE SAME RAL COLOUR AS THE CLADDING PANELS. ALL LUMINAIRE FIXING BOLTS ETC. SHALL BE THE SAME COLOUR AS THE LUMINAIRE.
 - GENERALLY, THE COLUMNS SHALL BE GALVANISED STEEL CONSTRUCTION. THE ELECTRICAL CONTRACTOR SHALL Liaise WITH THE ARCHITECT TO ASCERTAIN THE RAL COLOUR OF THE COLUMNS. THE COLUMN HEADS SHALL MATCH THE RAL COLOUR OF THE COLUMN.
 - WHERE SERVICES NEED TO BE INSTALLED WITHIN DUCTS / TRENCHES, THE ELECTRICAL CONTRACTOR SHALL SUPPLY THE MAIN CONTRACTOR WITH DETAILS OF REQUIRED DUCT ROUTES AND DRAW FIT LOCATIONS.
 - DURING INSTALLATION OF THE EXTERNAL LIGHTING A DRAW WIRE SHALL BE PULLED THROUGH WITH THE CABLING TO PROVIDE A MEANS OF INSTALLING FUTURE SERVICES

P2 13.03.23 Issued for planning CP
P1 23.05.22 Issued for planning CP
Rev. Date Details Initials
Engineering Services Consultancy Ltd
Giffen House
19 Ludgate Hill
Birmingham
B3 1DW
T: 0121 214 8998
F: 0121 214 8999
W: www.escuk.com
Client

Project
Catalyst Phase 2.1

Drawing Title
External Lighting Layout

Purpose
PLANNING

Drawn **DM** Engineer **AW** Approved **CP**
Project No. **1760** Date **May 2022** Scale @ A0 **1:750**
Drawing No. **1760-ESC-00-ZZ-DR-E-2104** Revision **P2**

THIS DRAWING IS FOR INFORMATION ONLY TO DEMONSTRATE DESIGN INTENT AND REPRESENTS THE AGREED SERVING STRATEGY AND MINIMUM STANDARDS TO BE ACHIEVED. WHERE ADDITIONAL DETAILS HAVE BEEN SHOWN, THIS HAS BEEN PROVIDED IN ORDER TO CONVEY GREATER UNDERSTANDING OF THE CONCEPTUAL REQUIREMENTS AND SHALL NOT BE TAKEN AS DETAILED DESIGN.

IT HAS NOT BEEN PRODUCED TO ACCURATE DESIGN CALCULATIONS AND SHALL NOT BE USED FOR INSTALLATION PURPOSES.

THE CONTRACTOR WILL BE RESPONSIBLE FOR THE DESIGN OF THE ENGINEERING SERVICES IN ACCORDANCE WITH THE DESIGN AND BUILD CONTRACT. PLANT SIZING IS INDICATIVE AND THE CONTRACTOR SHALL BE FULLY RESPONSIBLE FOR THE DETAILED DESIGN OF ALL PLANT AND EQUIPMENT.

THIS DRAWING SHALL BE READ IN CONJUNCTION WITH ALL CONTRACT DOCUMENTS, PROJECT SPECIFICATIONS AND DRAWINGS